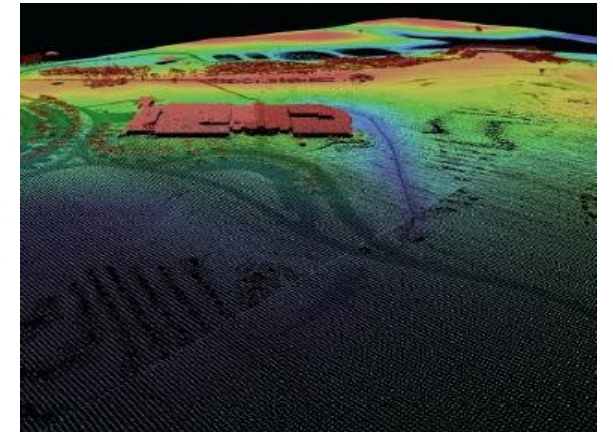
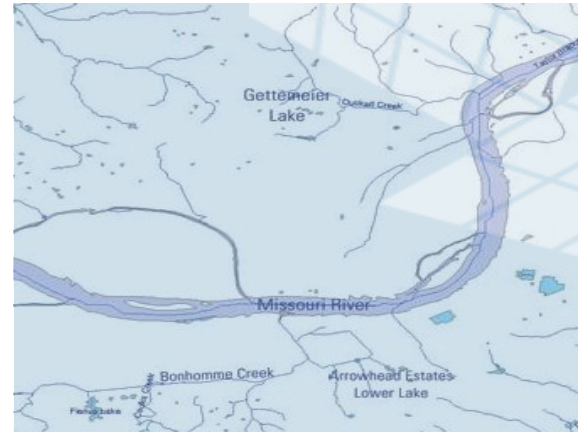
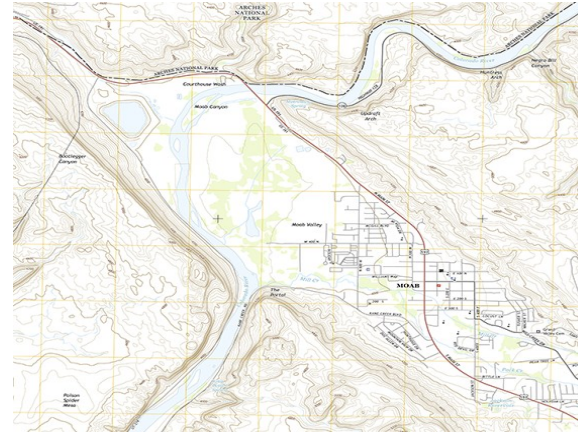


# The National Geospatial Technical Operations Center: Products, Services, and Operational Support



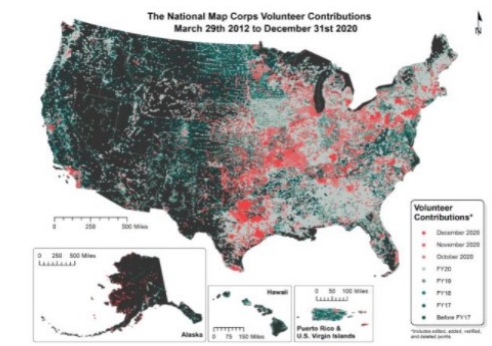
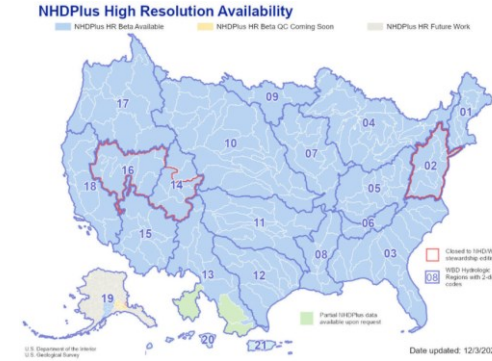
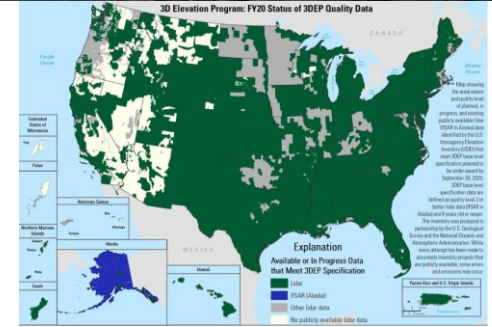
Alaska Geospatial Summit October 2023

Kim Mantey

Director, National Geospatial Technical Operations  
Center

# National Geospatial Technical Operations Center

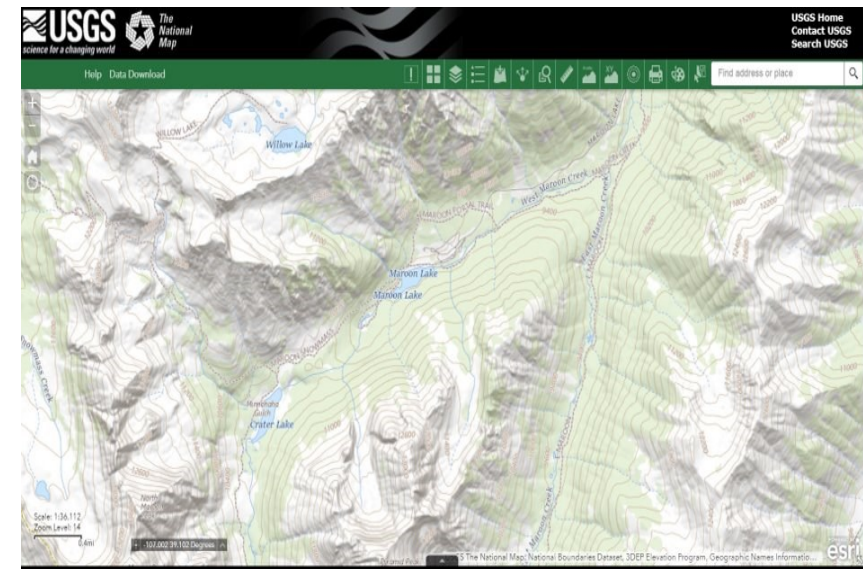
- Geospatial Center of Excellence supporting the National Geospatial Program, the civilian mapping agency.
- Extensive collaboration with over 260 partners including 18 Federal agencies and 249 state and local governments for acquisition, management and maintenance of geospatial data.
- An offsite suite of 10 prime contractors with numerous subcontractors under the Geospatial Product and Service Contract (GPSC) provide capacity of geospatial services in support of NGP's national acquisition programs.
- The Center manages over 3.5 Petabytes of geospatial data stored locally and on the cloud.
- Demand for products and services is high with over 462 million hits per month on data download, services, and applications.
- Run the "National Map Corp," a crowdsourcing effort. Over 5,500 volunteers have collected over 412,000 unique map features to contribute to NGP's data holdings.
- The National Map is the comprehensive data source for accessing viewing and downloading geospatial data assets and includes foundational, national data including Hydrography, Elevation, Transportation, Structures, Boundaries and Geographic Names themes.





## **Delivery of nationally consistent, authoritative geospatial data and derived products and services**

- Acquisition of geospatial data (via Federal/state and local partners, contractors, and Center staff)
- Maintenance and management of national level databases:
  - Geographic Names, Hydrography, Elevation, and Boundaries, Man-made Structures, and Transportation
- Data validation and data integration
- Technical support and training
- Standards development and maintenance
- Applied geospatial research
- Systems and software tool development
- Data delivery of products/services
- Research - **Center of Excellence for Geospatial Information Science (CEGIS)**



# Geospatial Products and Services Contract (4)

- \$850M Cap over 5-years, 10 prime contractors (and subcontractors)
- Services to be procured
  - Acquisition of remotely sensed data from multiple platforms
    - Lidar, radar, imagery, electromagnetic and geophysical data
  - High resolution topographic and geophysical data and map products
  - Feature extraction from remote sensing data (hydrography, buildings, etc.)
  - Emergency acquisition and geospatial product generation for disaster response
  - Survey and control services including cadastral surveying
  - Geographic Information Systems (GIS) analysis
  - Validation of provided geospatial data and products





# Over 300 Partners Including Federal, State, and Local

Bureau of Indian Affairs  
 Bureau of Land Management  
 DOD - AZ National Guard  
 Department of Energy  
 Federal Emergency Management Agency  
 Fish and Wildlife Service  
 National Geospatial-Intelligence Agency  
 National Oceanic and Atmospheric Administration  
 National Park Service  
 Natural Resources Conservation Service  
 Tennessee Valley Authority  
 U.S. Navy  
 US Army Corps of Engineers  
 US Bureau of Reclamation  
 USDA-ARS  
 US Forest Service  
 USGS  
 AK Dept. of Natural Res.  
 AK North Slope Borough  
 City of Gustavus  
 Fairbanks North Star Borough  
 Golden Valley Electric Authority  
 Matanuska  
 Metlakatla  
 Municipality of Anchorage  
 Organized Village of Kake  
 Sealaska  
 The Nature Conservancy  
 AL Department of Economic and Community Affairs  
 AL Department of Transportation  
 Chilton County, AL  
 Cullman County, AL  
 Franklin County, AL  
 Huntsville, City of  
 Russell County, AL  
 Town of Thorsby, AL  
 Tuscaloosa County, AL  
 Walker County, AL  
 AR Game and Fish Commission  
 Northwest AR Regional Planning Commission  
 Pulaski County Area GIS, AR  
 Coconino County, AZ  
 Pima Association of Governments, AZ  
 CA Department of Water Resources

CA Geological Survey  
 CA Natural Resource Agency  
 CalFire  
 City of San Diego OHS, CA  
 Los Angeles Regional Imagery Consortium, CA  
 San Diego County, CA  
 San Diego Association of Governments, CA  
 Southwest Wetlands Interpretive Association  
 City of Montrose, CO  
 CO Division of Rec and Mining  
 CO Governor's Office of Information Technology  
 CO Water Conservation Board  
 Denver International Airport  
 Garfield County, CO  
 Gunnison County, CO  
 Town of Castle Rock, CO  
 FL Division of Emergency Management  
 State of FL  
 Martin County Engineering Dept., FL  
 Northwest Florida Water Management District  
 Osceola County, FL Office of Emergency Management  
 Palm Beach County, FL  
 Seminole Tribe of Florida  
 St. Johns River Water Management District  
 Suwannee River Water Management District  
 City of Roswell, GA  
 GA Coastal Regional Commission  
 GA Environmental Protection Division  
 GA Mountains Regional Commission  
 IA Department of Agriculture and Land Stewardship  
 Nez Perce County, ID  
 Cook County, IL  
 IL Champaign County GIS Consortium  
 IL Department of Natural Resources  
 IL State Geological Survey  
 Kane County, IL  
 Lake County, IL  
 McHenry County, IL

Marion County GIS, IN  
 Hamilton County, IN  
 Wayne County, IN  
 KS Department of Agriculture  
 KS GIS Policy Board  
 KY Commonwealth Office of Technology  
 KY Division of Water  
 LA Coastal Protection and Restoration Authority  
 LA Department of Transportation and Development  
 Arlington, MA  
 State of MA  
 MassGIS  
 Baxter State Park, ME  
 Bureau of Parks and Lands, ME  
 Clayton Lake Woodland Holdings, LLC  
 Cooperative Forestry Research Unit, ME  
 Drinking Water Commission, ME  
 King Pine Win, ME  
 ME Bureau of Parks and Lands  
 ME Department of Transportation  
 ME Office of Information Technology  
 Seven Islands Land Company  
 Washington County, ME  
 Charlevoix County, MI  
 Gratiot County, MI Drain Commission  
 Little Traverse Bay Band Odawa Indians  
 The Southeast Michigan Council of Governments  
 State of MI  
 Boone County MO  
 Metropolitan St Louis Sewer District  
 MS Environmental Quality Department  
 NC Department of Transportation  
 NC Department of Public Safety  
 NC Floodplain Mapping Program  
 City of Blair, NE  
 City of Fremont, NE  
 City of Lincoln-Lancaster County, NE  
 City of Omaha, NE  
 Douglas County, NE  
 NE Office of the Chief Information Officer  
 Papio Missouri River Natural Resources District

Sarpy County, NE  
 NH Department of Environmental Services  
 NH Department of Transportation  
 NJ Department of Environmental Protection  
 DE Valley Regional Planning Commission  
 City of Henderson, NV  
 City of Las Vegas, NV  
 Clark County Regional Flood, NV  
 Clark County Water Reclamation District, NV  
 Clark County, NV  
 Lyon County, NV  
 Southern NV Water Authority  
 Storey County, NV  
 University of Nevada Reno  
 Washoe County, NV  
 City of Buffalo, NY  
 International Joint Commission (IJC)  
 NY State Information Technology Services  
 NY State Office of Information Technology Services  
 City of Columbus OH  
 Clinton County OH  
 Delaware County OH  
 Lucas County, OH  
 Muskingum Watershed Conservancy District  
 OH Department of Administrative Services  
 Sandusky County, OH  
 Wood County, OH  
 City of Hillsboro, OR  
 City of Portland, OR  
 Coquille Indian Tribe  
 Metro Regional Gov, OR  
 OR Department of Geology and Mineral Industries  
 OR Water Enhancement Board Grant  
 OR Department of Forestry  
 Umatilla Indian Reservation  
 City of Allentown, PA  
 PA Tumpike Commission  
 PA Department of Environmental Protection  
 PA Department of Transportation  
 PA Dept of Conservation and Natural Resources  
 PA Emergency Management Agency  
 Susquehanna River Basin Commission  
 Tri-County Regional Planning Commission, PA  
 Puerto Rico Planning Board

Alcon County, SC  
 Anderson County, SC  
 Beaufort County, SC  
 Charleston County, SC  
 City of Aiken, SC  
 City of Greenville, SC  
 City of North Augusta, SC  
 Dorchester County, SC  
 Jasper County, SC  
 Lexington County, SC  
 Newberry County, SC  
 Pickens County, SC  
 Richland County, SC  
 SCANA Public Utility, SC  
 South Carolina Lidar Consortium  
 911, TN  
 Appalachian Electric Co-op, TN  
 Arlington, TN  
 City of Bartlett, TN  
 City of Bristol, TN  
 City of Kingsport, TN  
 City of Germantown, TN  
 Hamilton County, TN  
 Johnson City Metro Transportation Planning Organization, TN  
 City of Lakeland, TN  
 Memphis Chamber of Commerce  
 Memphis Light, Gas and Water  
 City of Memphis, TN  
 Metropolitan Planning Department  
 Nashville Davidson County  
 City of Millington, TN  
 Morristown-Hamblen GIS Group  
 Rutherford County, TN  
 Shelby County, TN  
 Sullivan County, TN  
 TN Department of Finance and Administration  
 Town of Collierville, TN  
 Houston-Galveston Area Council  
 San Antonio River Authority  
 TX Commission on Environmental Quality  
 TX Water Development Board  
 Williamson County  
 UT Division of Emergency Management  
 UT Geological Survey  
 UT Forestry, Fire, and State Lands  
 Moab City, UT  
 Wasatch Ski Resorts  
 Tooele Army Depot  
 Bryce Canyon History  
 Riverdale City, UT  
 Park City, UT

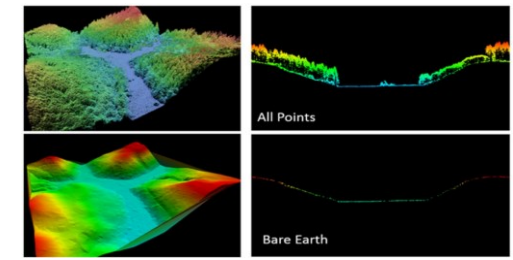
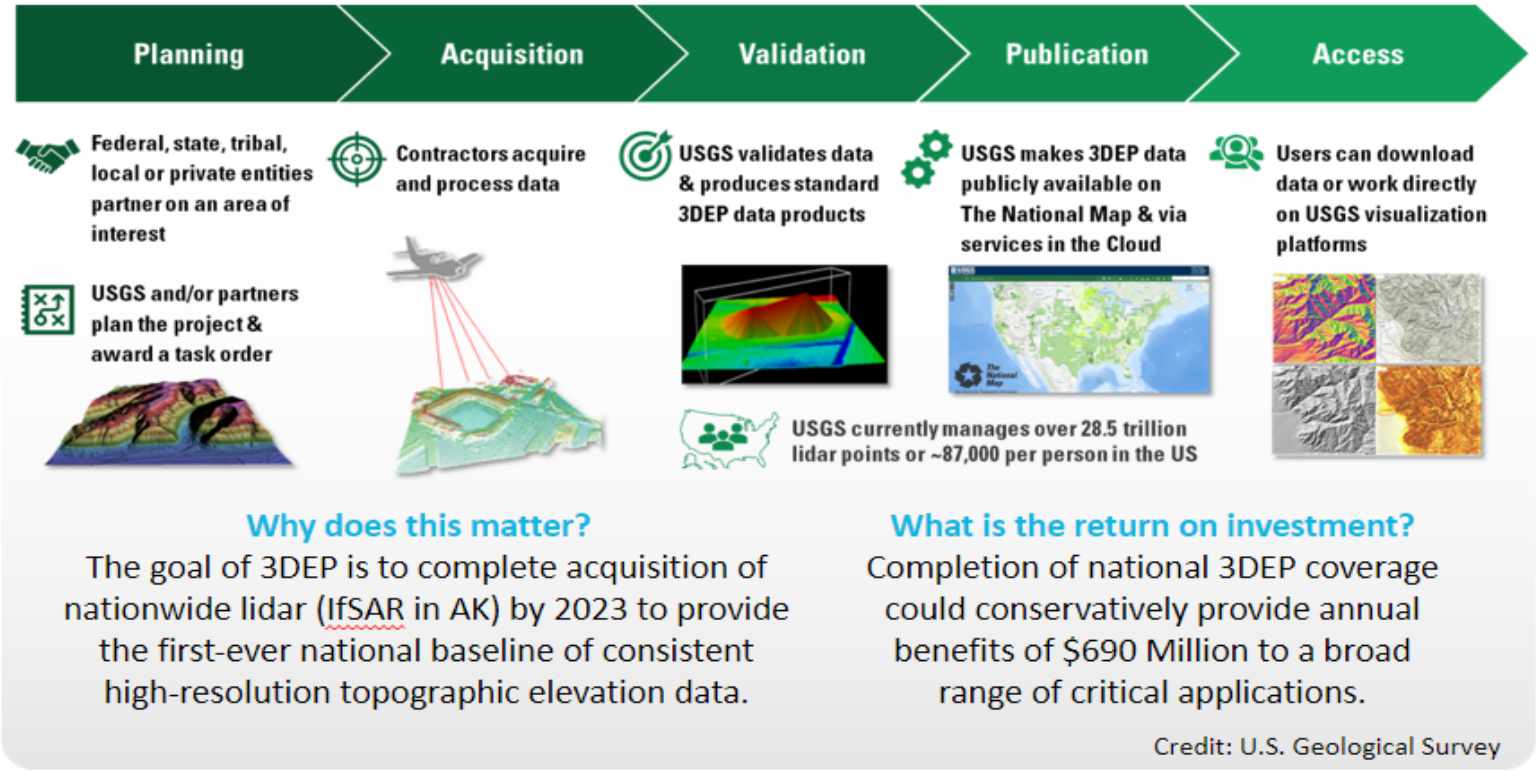
Mohave County, UT  
 Bear Lake Watch  
 City of Tremonton, UT  
 City of Logan, UT  
 City of Brigham, UT  
 Fairfax County, VA  
 Henrico County, VA  
 University of Virginia  
 VA Dept of Environmental Quality  
 VA Information Technologies Agency  
 City of Williamsburg, VA  
 VT Agency of Commerce and Community Development  
 Columbia County  
 WA Dept of Natural Resources  
 Adams County, WA  
 Bayfield County, WA  
 Calumet County, WI  
 Clark County, WI  
 Dane County, WI  
 Dodge County, WI  
 Fond du Lac County, WI  
 Forest County, WI  
 Green Lake County, WI  
 Jefferson County, WI  
 La Crosse County, WI  
 Lafayette County, WI  
 Langlade County, WI  
 Lincoln County, WI  
 Monroe County, WI  
 Oneida County WI Land Information  
 Pepin County, WI  
 Portage County, WI  
 Price County, WI  
 Sawyer County, WI  
 Southeastern Wisconsin Regional Planning Commission  
 Taylor County, WI  
 City of Washburn  
 Wasupaca County, WI  
 Winnebago County, WI  
 Wisconsin Coastal Management Program  
 Illinois Height Modernization Program  
 MI Dept of Environmental Quality  
 MI Department of Technology, Management and Budget  
 Natrona County, WY  
 Capitol Region Council of Governments  
 County of Hawaii  
 Waushara County, WI

# 3D Elevation Program (3DEP)

**3D Elevation Program**  
National Geospatial Program



## 3D Elevation Program (3DEP) Data Lifecycle



- Congressionally mandated to map and provide elevation data for the entire United States
- Over 300 Federal, State and local partners
- Oversee the entire lifecycle of data, from planning to publication
- Multiple active remote sensing technologies
- Has gone from a baseline of QL2 (2 points per square meter) to increased demand to QL1 (8 points per square meter)

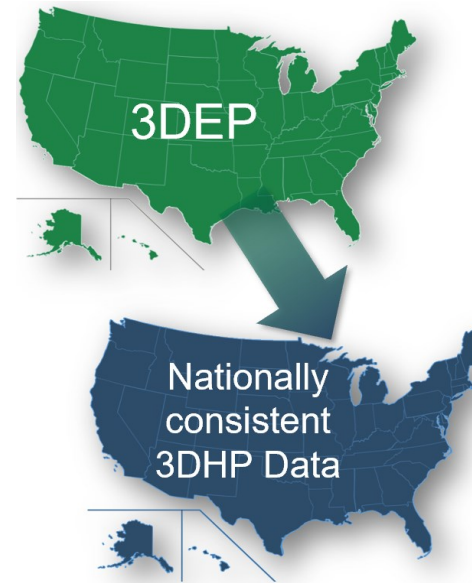




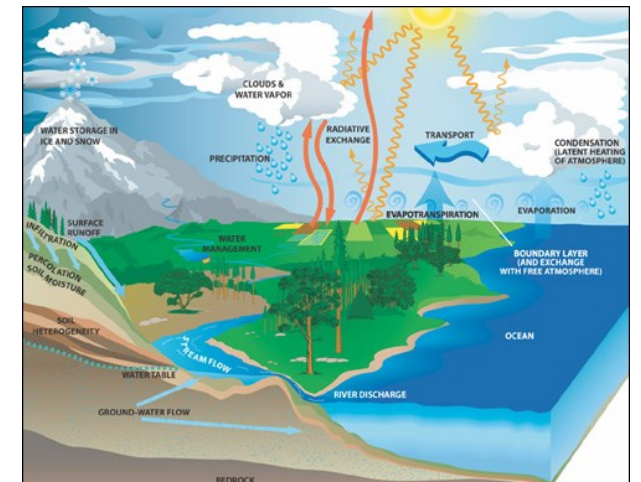
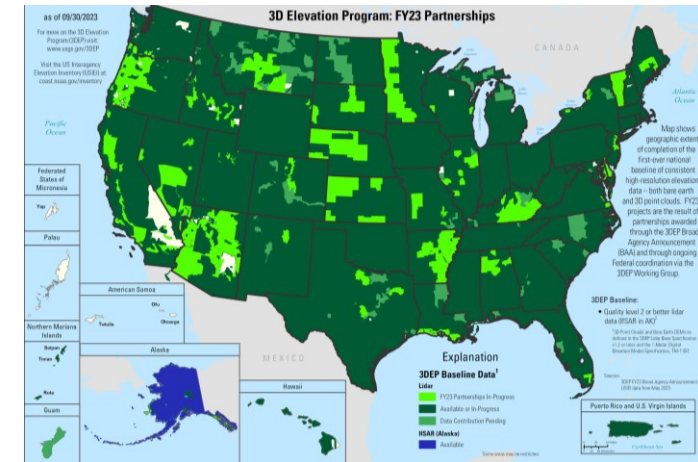
# 3D Hydrography Program

Align vertically, horizontally, and temporally with 3D Elevation Program (3DEP) data

- Replace existing older, inconsistent data with higher accuracy hydrography derived from 3D Elevation Program (3DEP) lidar
- Follow 3DEP Best Practices
  - Governance
  - Add 3DHP to the 3DEP Data Collaboration Announcement (DCA)
  - Contract 3DHP data through the USGS Geospatial Products and Services Contracts
  - Allow for co-operative data acquisition
  - Specifications and data validation
- Data and systems built for hydrologic applications
- Better accounting of the hydrologic cycle through connections to groundwater, U.S. Fish and Wildlife Service National Wetlands Inventory, and engineered hydrography
- Interoperability with other data such as surficial geology, soils, landcover, transportation networks, and other infrastructure

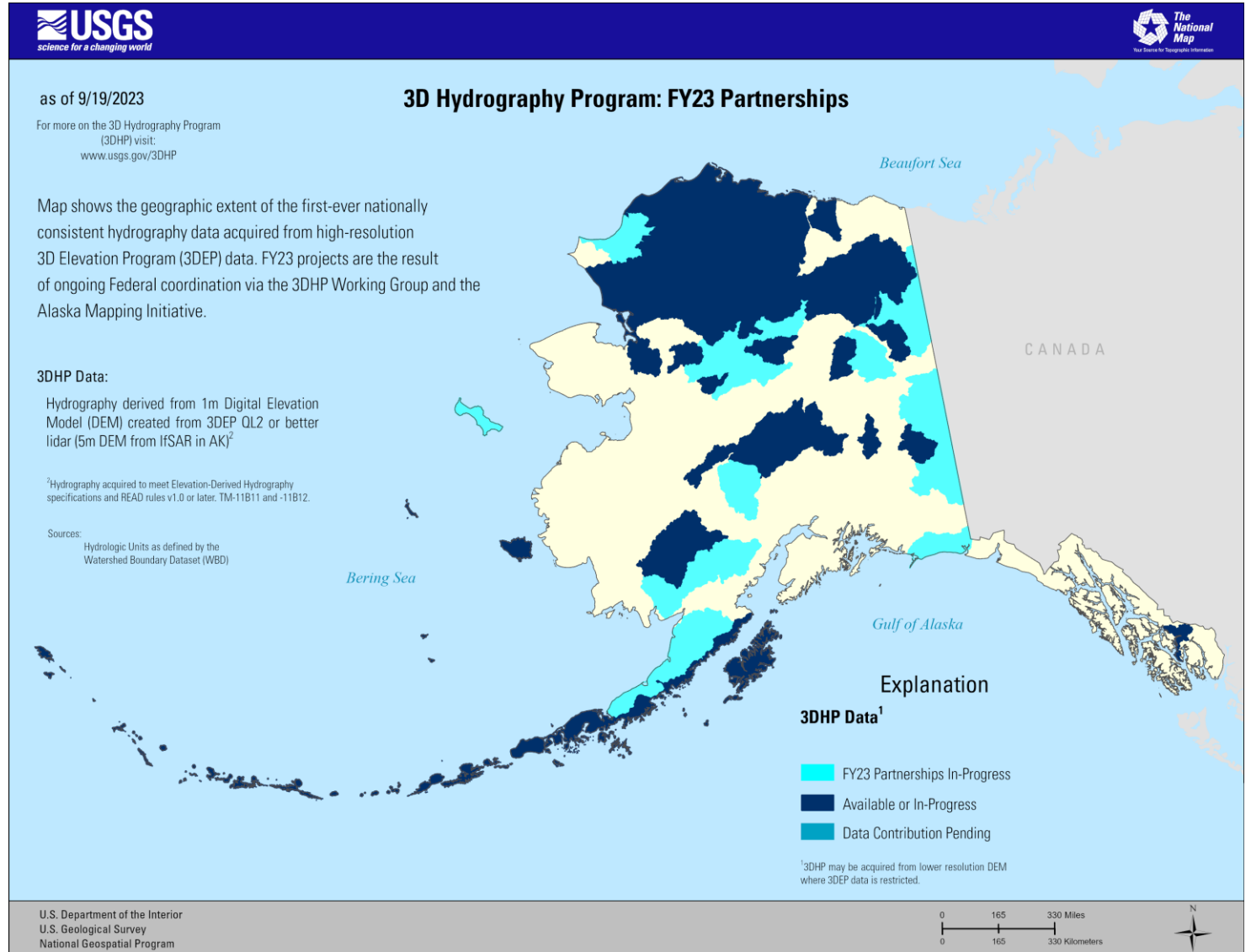


3DEP Status – on track to complete nationwide coverage by 2026



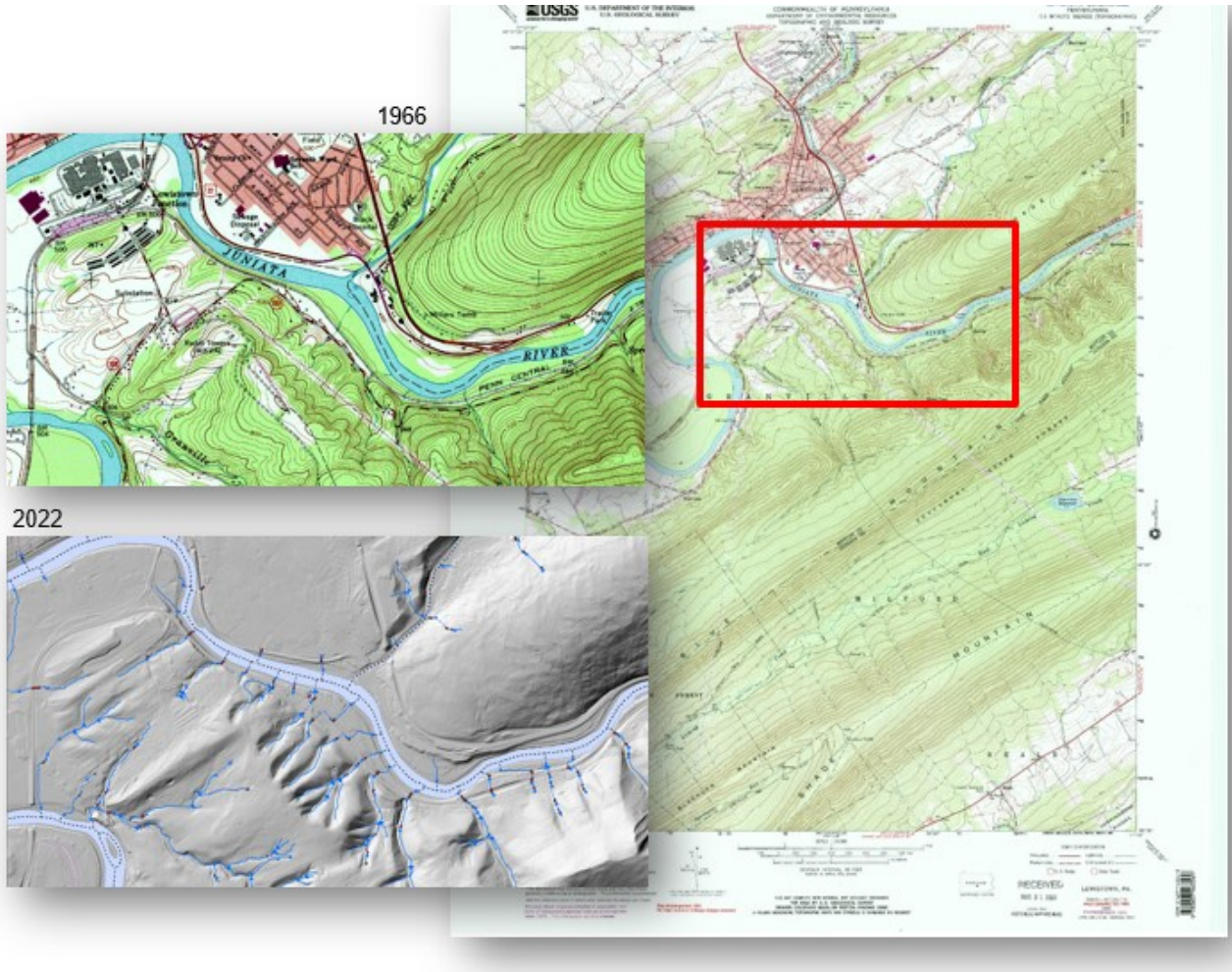
# 3D Hydrography Program Acquisition in FY 2023

- USGS Alaska Mapping funds support ongoing data acquisition - data in progress or planned for over 63 percent of the State
- ~230K sq miles available or in progress through FY22
- 88K sq miles added in FY23
- FY24 projected ~60K sq miles





# Cartographic Services: Current and Upcoming Products

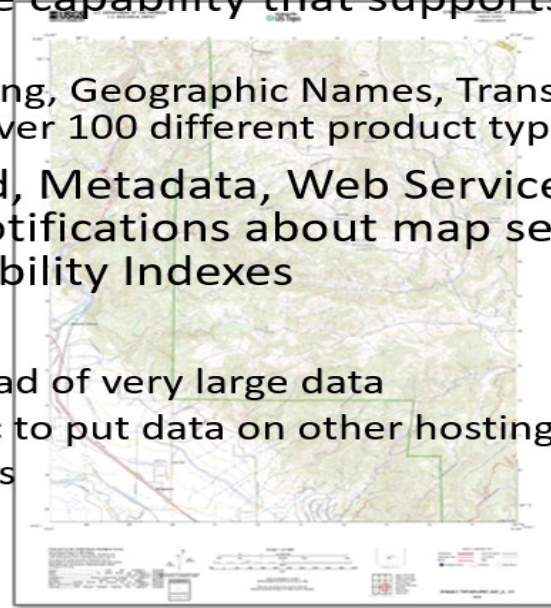
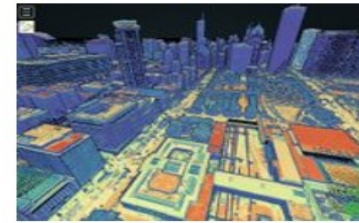


- Three year refresh cycle over entire country – over 18,000 new standard quadrangle maps each year!
  - Maps built from updated source data (elevation, hydrography, transportation, structures, boundaries)
- Upcoming fiscal year plans: Over 1,000 updated 7.5 minute quads in Alaska
- Congressional mapping custom congressional district maps
- New products – dynamic mapping



## The National Map Delivery

- TNM Delivery System is an enterprise capability that supports all NGP Products and Services.
  - 3DEP, Hydrography, Topographic Mapping, Geographic Names, Transportation, Boundaries, Structures, orthimagery, land cover - over 100 different product types
- Provides: Search, Viewing, Download, Metadata, Web Services, Basemaps Caches, Cloud optimized formats, Notifications about map services, On Demand Elevation Derivatives, Product Availability Indexes
- Future of Delivery:
  - Enhanced use in place to avoid download of very large data
  - Support for bulk delivery and auto-sync to put data on other hosting platforms
  - On Demand Dynamic Topographic Maps
  - Semantic based search at feature level





# National Geospatial Technical Operations Center

**THANK YOU!**

<https://www.usgs.gov/national-geospatial-technical-operations-center>

<https://www.usgs.gov/national-geospatial-technical-operations-center/geospatial-products-and-services-contracts>