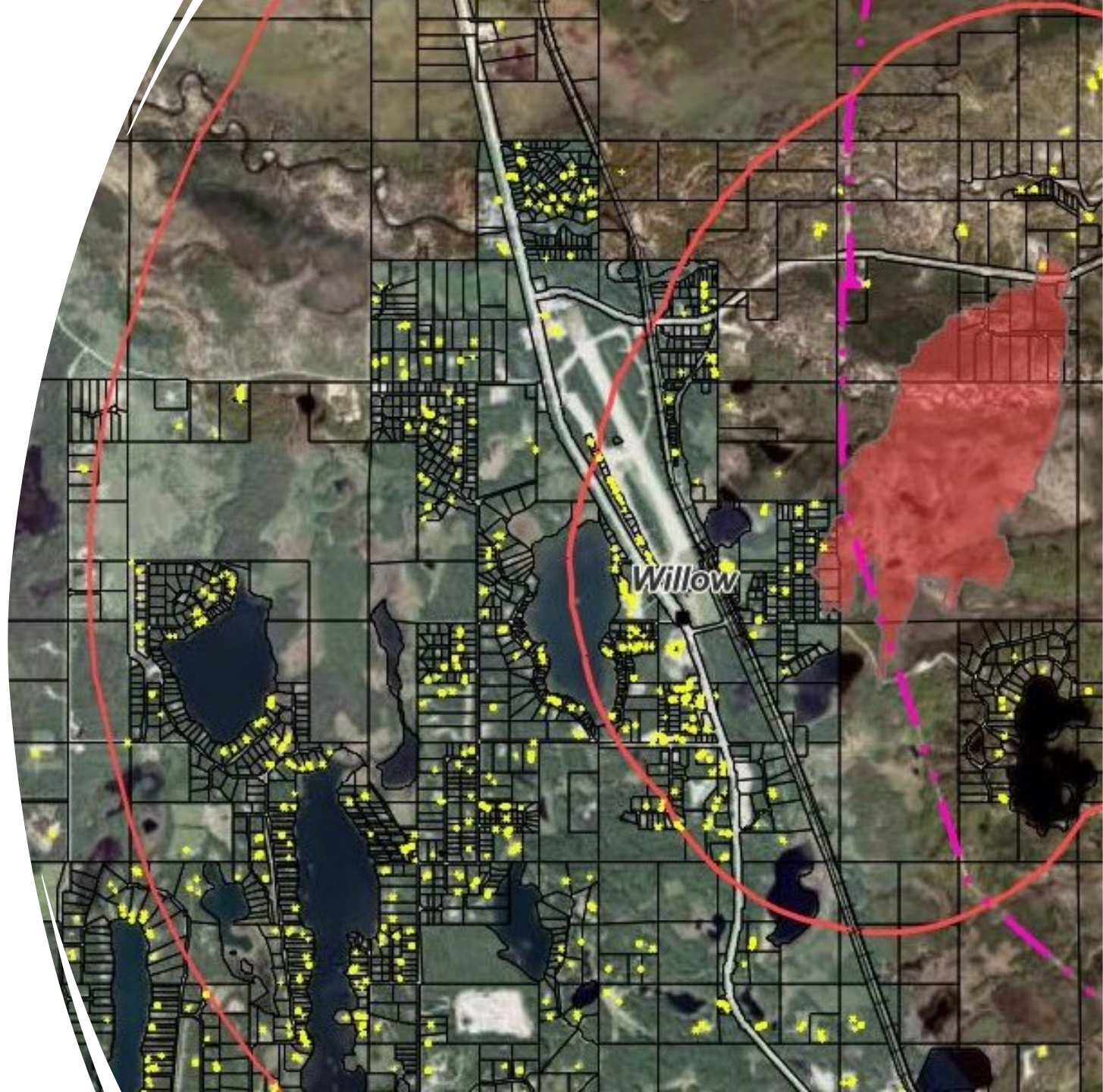


Quantifying Land & Infrastructure Values Impacted by or in Proximity to Wildfire



Overview

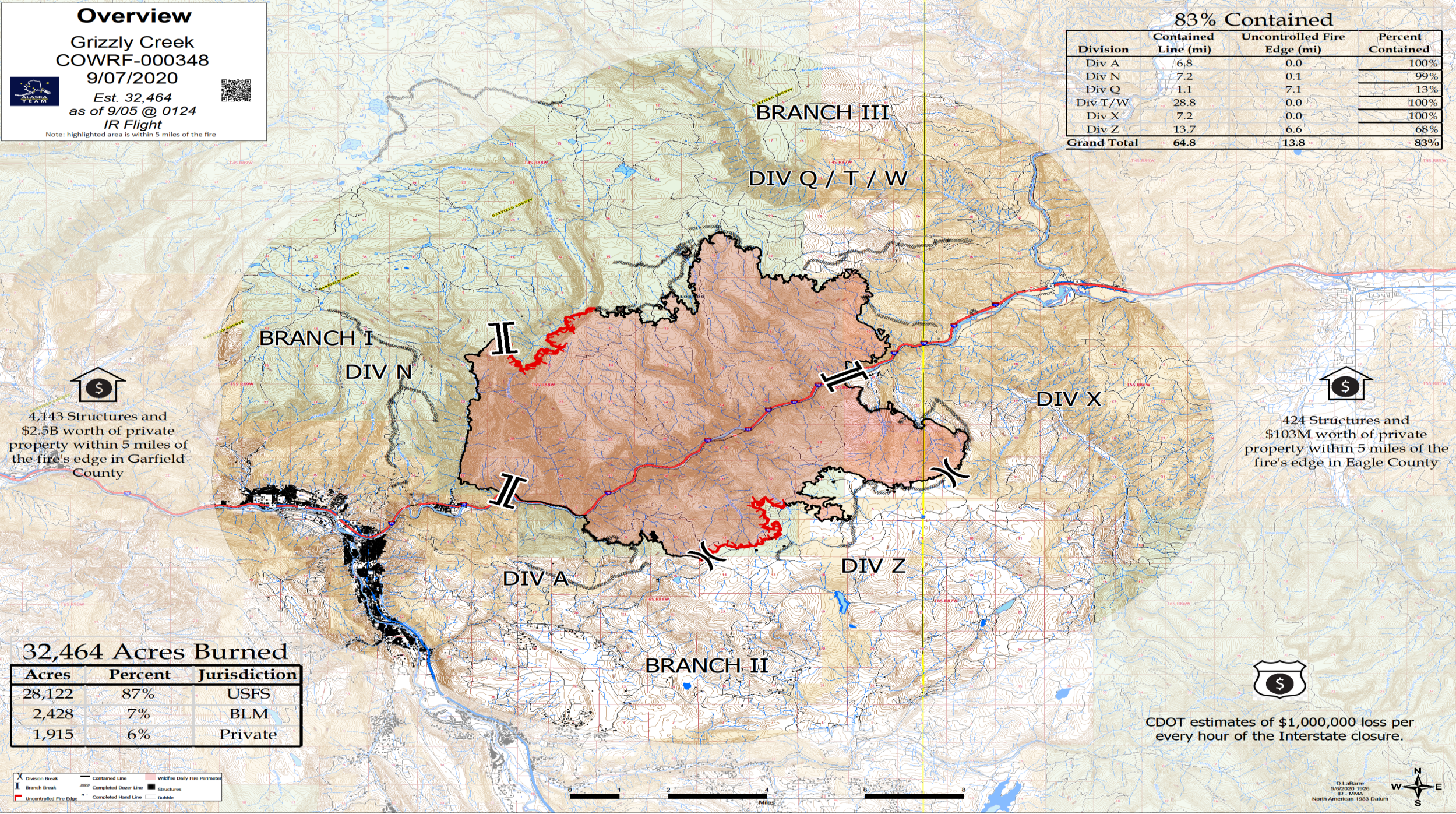
Grizzly Creek
COWRF-000348
9/07/2020

Est. 32,464
as of 9/05 @ 0124
IR Flight

Note: highlighted area is within 5 miles of the fire

83% Contained

Division	Contained Line (mi)	Uncontrolled Fire Edge (mi)	Percent Contained
Div A	6.8	0.0	100%
Div N	7.2	0.1	99%
Div Q	1.1	7.1	13%
Div T/W	28.8	0.0	100%
Div X	7.2	0.0	100%
Div Z	13.7	6.6	68%
Grand Total	64.8	13.8	83%



4,143 Structures and \$2.5B worth of private property within 5 miles of the fire's edge in Garfield County

424 Structures and \$103M worth of private property within 5 miles of the fire's edge in Eagle County

32,464 Acres Burned

Acres	Percent	Jurisdiction
28,122	87%	USFS
2,428	7%	BLM
1,915	6%	Private

CDOT estimates of \$1,000,000 loss per every hour of the Interstate closure.

X

Division Break

||

Branch Break

—

Uncontrolled Fire Edge

—

Contained Line

—

Completed Outer Line

—

Completed Hand Line

•

Structures

•

Bubble

—

Wildfire Daily Fire Perimeter





2023 MAJOR WILDFIRES: VALUES PROTECTED

- Wildfire
- Five Mile Buffer
- Communities

- Department of Defense
- Ecological Research
- Railroad Boundary
- Trans Alaska Pipeline
- Highway
- Local Road
- Electric Transmission Lines

Lost Horse Creek

Values Within Five Miles:

Caribou-Poker Creeks Research Watershed
Elliot Highway Corridor
Steese Highway Corridor
227 Known Structures
3 Native Allotments

McCoy Creek

Values Within Five Miles:

Trans Alaska Pipeline
Chugach Electric Powerlines
Richardson Highway Corridor
112 Known Structures

Pogo Mine Road

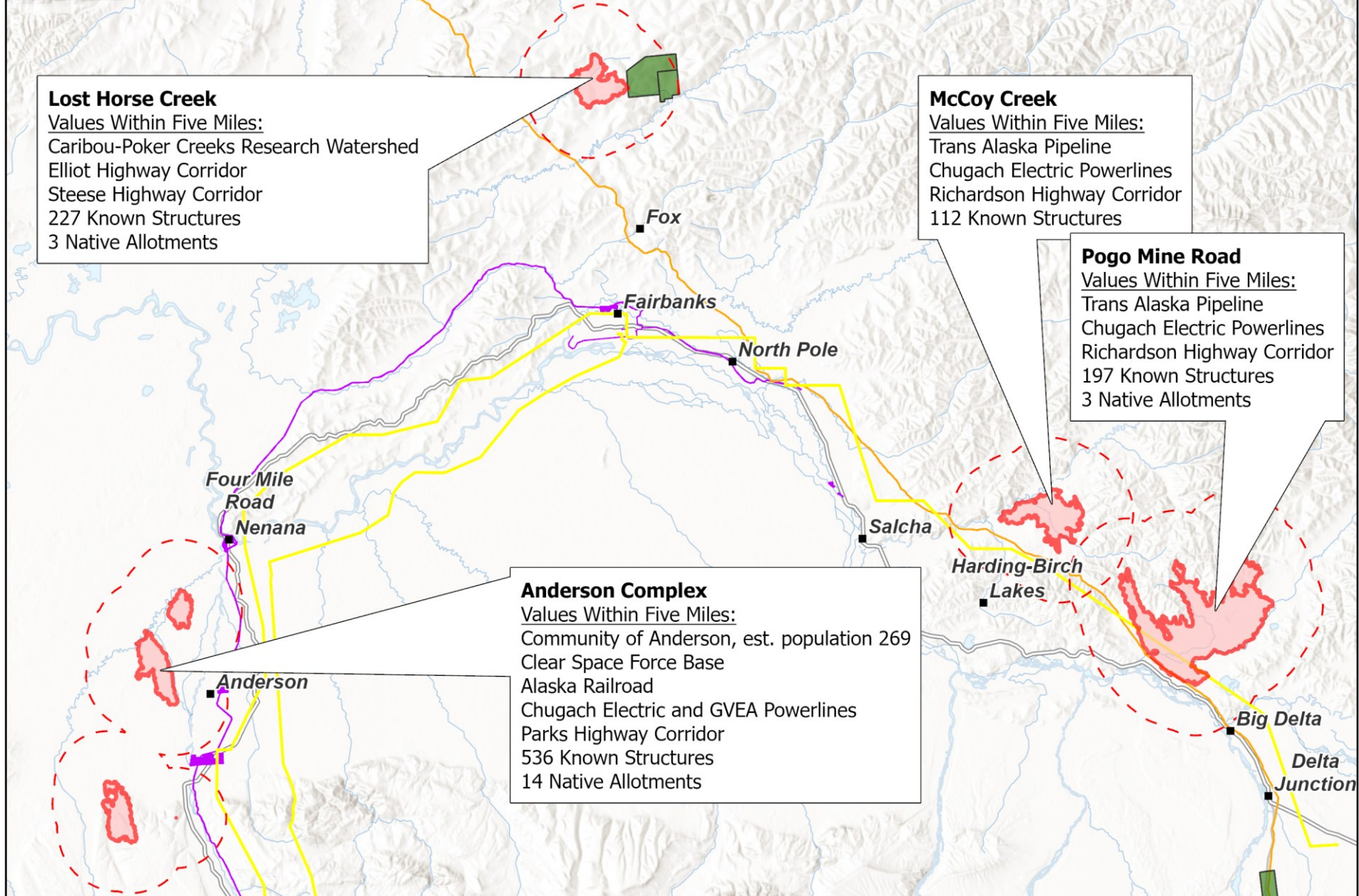
Values Within Five Miles:

Trans Alaska Pipeline
Chugach Electric Powerlines
Richardson Highway Corridor
197 Known Structures
3 Native Allotments

Anderson Complex

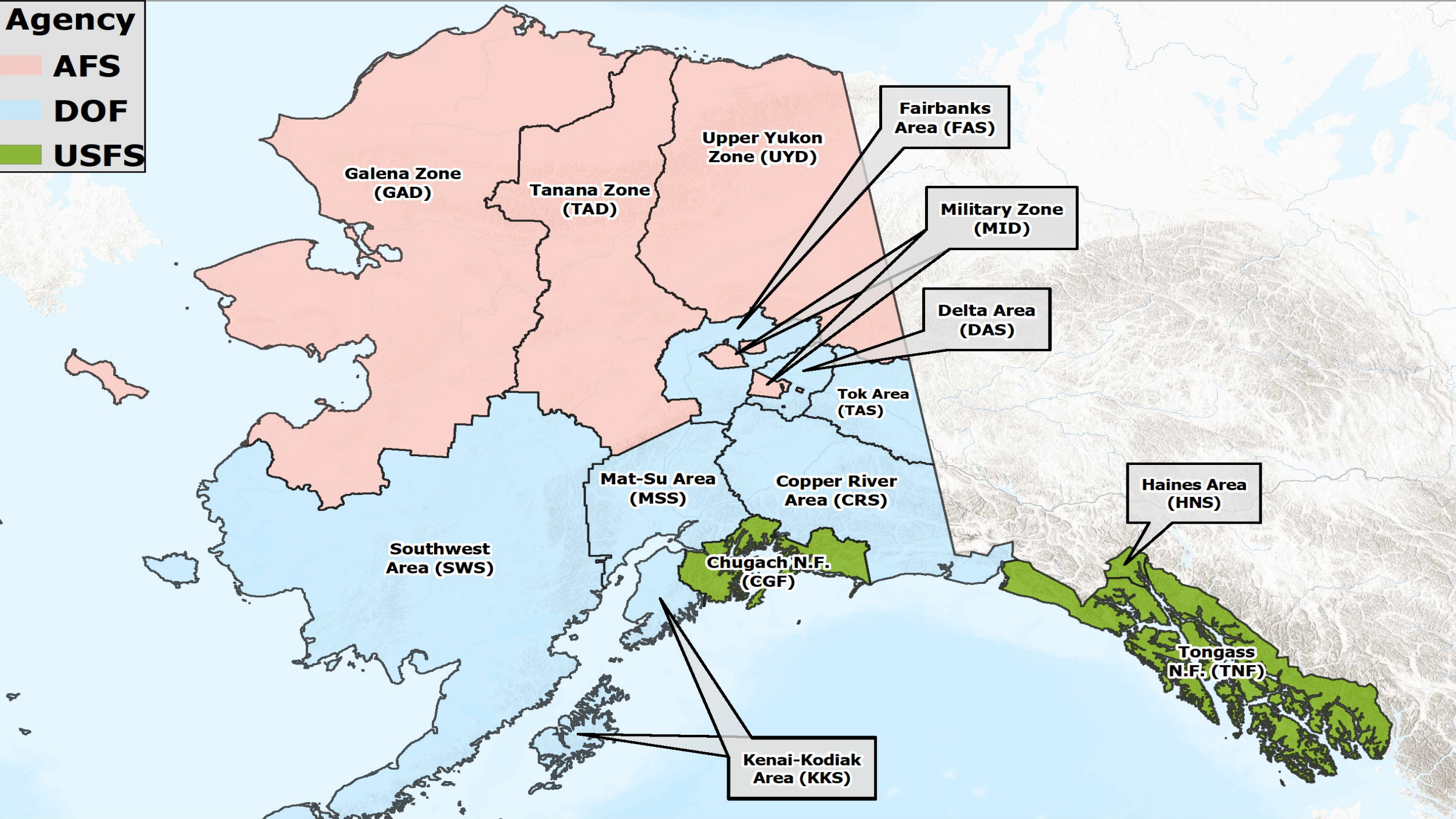
Values Within Five Miles:

Community of Anderson, est. population 269
Clear Space Force Base
Alaska Railroad
Chugach Electric and GVEA Powerlines
Parks Highway Corridor
536 Known Structures
14 Native Allotments



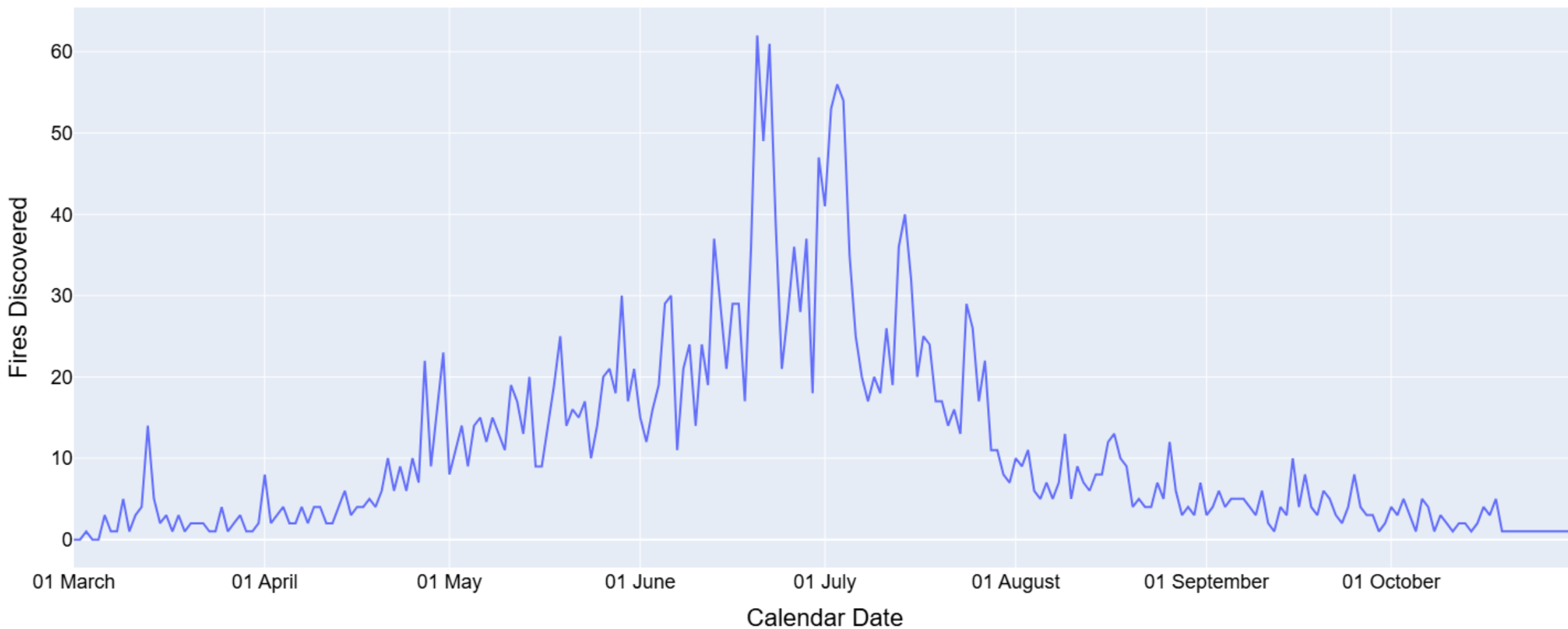
Agency

- AFS
- DOF
- USFS



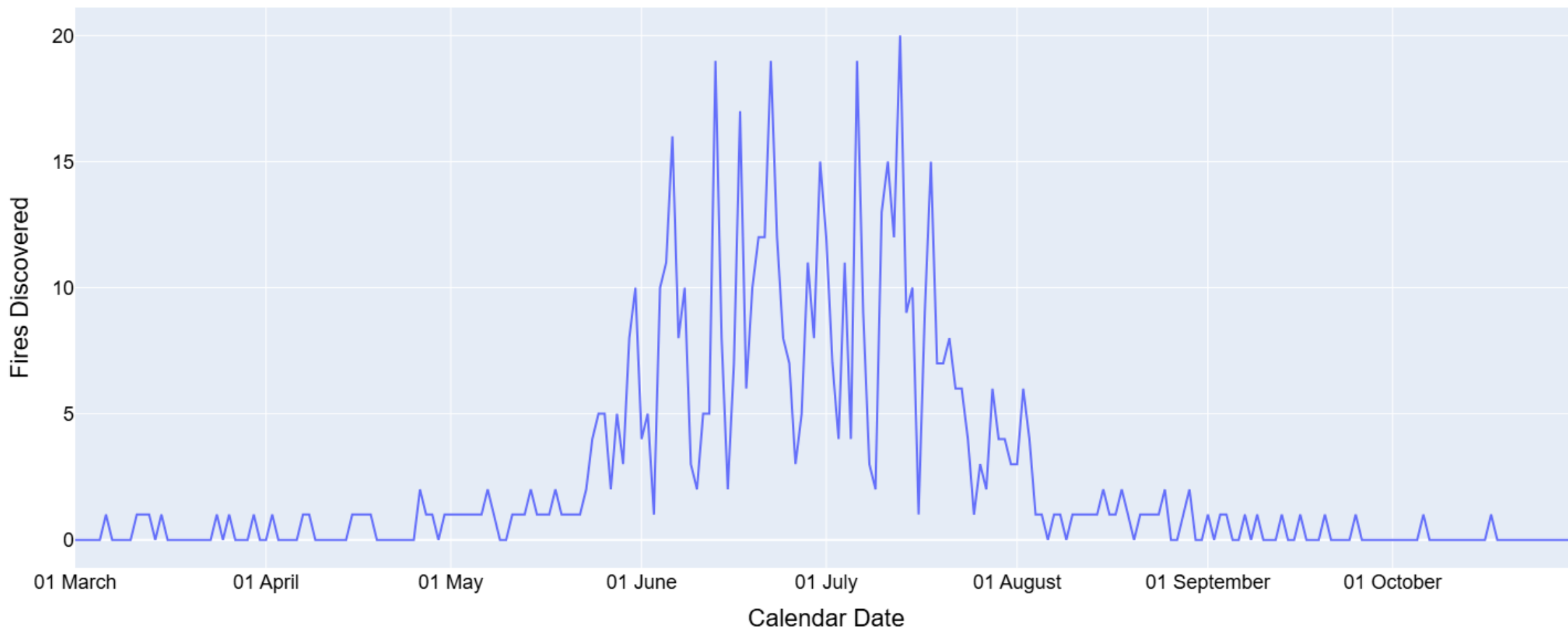
Maximum Number of Fires Discovered on a Given Calendar Date Since 1990

All AICC Regions



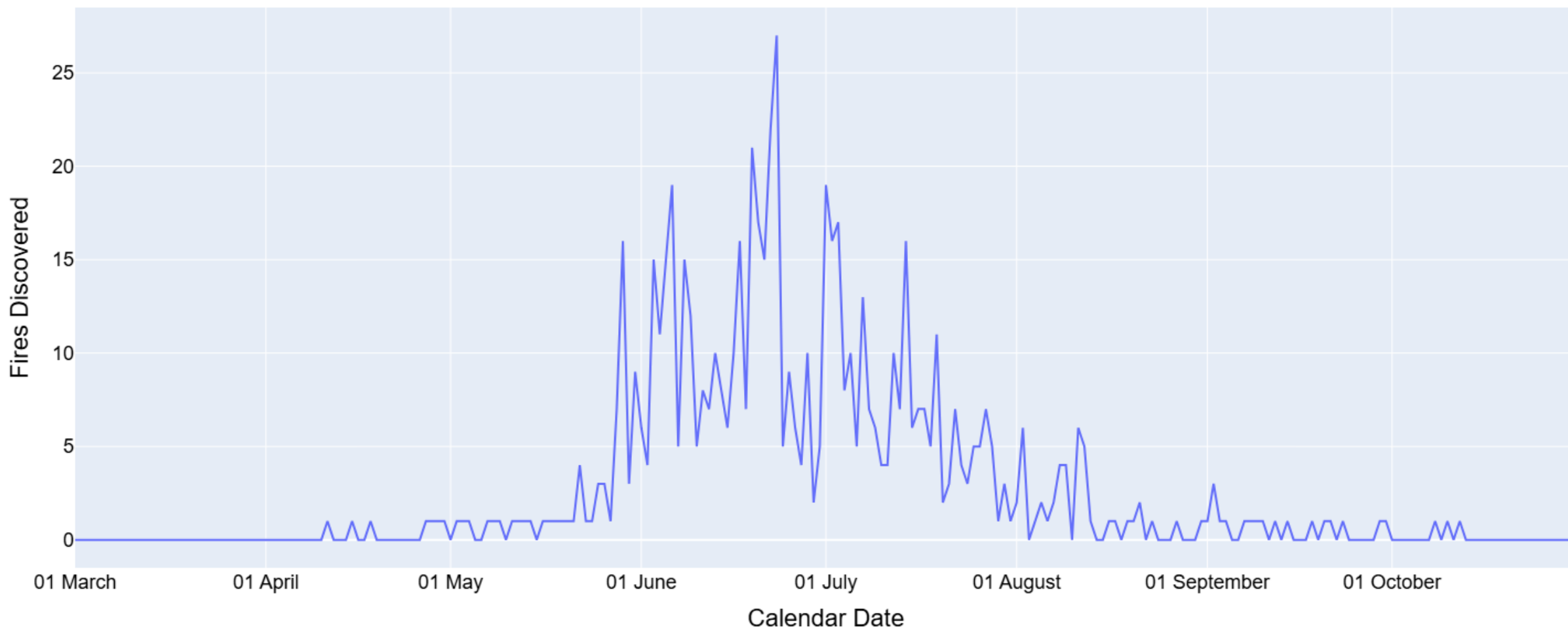
Maximum Number of Fires Discovered on a Given Calendar Date Since 1990

SWS Region



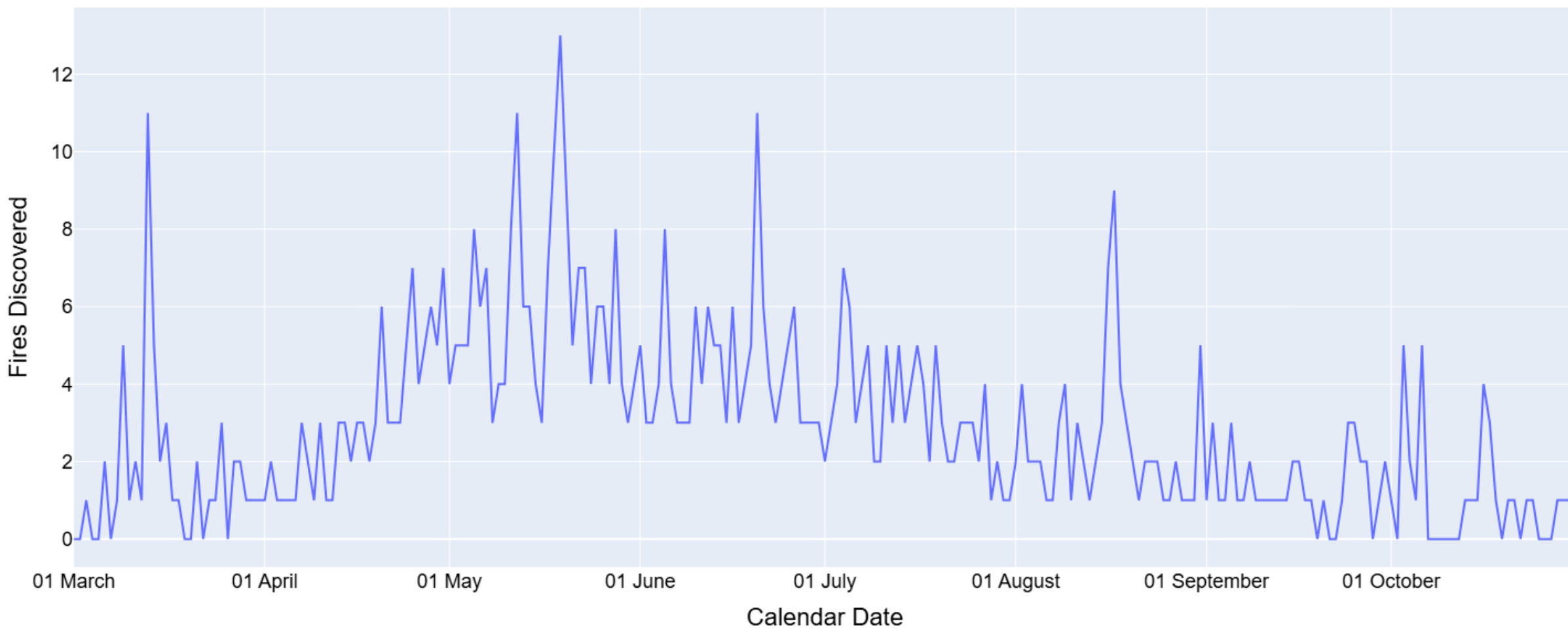
Maximum Number of Fires Discovered on a Given Calendar Date Since 1990

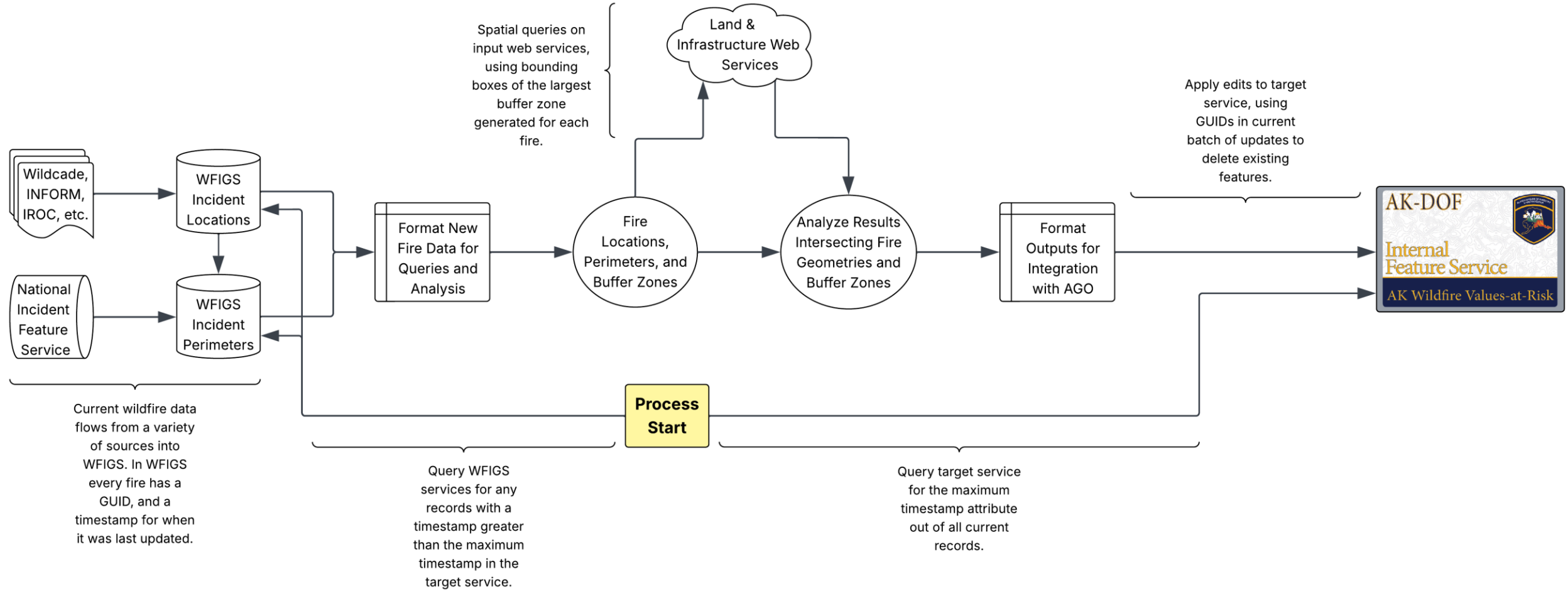
GAD Region



Maximum Number of Fires Discovered on a Given Calendar Date Since 1990

MSS Region





Perimeters and Reported Locations

Fire Number ▲	Fire Name ▲	Spatial Information Type	Web App Link	Activity Status ▲	Dispatch Center ▲	Region ▲	POO Protecting Agency ▲	POO Jurisdictional Agency ▲	POO Jurisd
<div><div>I</div><div>020</div><div>019</div><div>018</div><div>017</div><div>016</div><div>015</div><div>014</div><div>013</div></div>	<div></div>			<div></div>	<div></div>	<div></div>	<div></div>	<div></div>	
	Sacaloff	Reported Location	View on Map	Controlled	AKACDC	KKS	DVF	DNR	AKDNS
	Miller Loop	Reported Location	View on Map	Controlled	AKACDC	KKS	DVF	DNR	AKDNS
	Hoyt	Reported Location	View on Map	Out	AKACDC	KKS	DVF	DNR	AKDNS
	Down Wind	Reported Location	View on Map	Out	AKACDC	MSS	DVF	DNR	AKDNS
	Venture	Reported Location	View on Map	Out	AKACDC	KKS	DVF	DNR	AKDNS
	Wayside	Reported Location	View on Map	Out	AKACDC	KKS	DVF	DNR	AKDNS
	Carrillo	Reported Location	View on Map	Out	AKACDC	MSS	DVF	DNR	AKDNS
008	Baron	Reported Location	View on Map	Out	AKACDC	MSS	DVF	DNR	AKDNS
004	Scout Lake	Reported Location	View on Map	Out	AKACDC	KKS	DVF	DNR	AKDNS
002	Sasbo Bluff	Reported Location	View on Map	Out	AKACDC	MSS	DVF	DNR	AKDNS

Showing 1-10 of 19 rows

First

Prev

1

2

Next

Last

[One Mile Buffer Analysis](#)

[Three Mile Buffer Analysis](#)

[Five Mile Buffer Analysis](#)

One Mile Buffer Analysis

Fire Number ▲	Fire Name ▲	Spatial Information Type	Web App Link	USA Structures (FEMA)										
				Feature Count ▼	Occupational Class	Primary Occupation	Secondary Occupation							
				9,604										
007	Discovery Bay	1 Mile Buffer	View on Map	1,741	► Click to Expand	► Click to Expand	► Click to Expand							
016	East Eagle	1 Mile Buffer	View on Map	1,286	► Click to Expand	► Click to Expand	► Click to Expand							
009	Down Wind	1 Mile Buffer	View on Map	1,045	► Click to Expand	► Click to Expand	► Click to Expand							
008	Baron	1 Mile Buffer	View on Map	765	▼ Click to Expand	► Click to Expand	► Click to Expand							
					<table><tr><th>Occupational Class ▲</th><th>Structure Count ▲</th></tr><tr><td>Residential</td><td>575</td></tr><tr><td>Utility and Misc</td><td>139</td></tr><tr><td>Unclassified</td><td>24</td></tr><tr><td>Commercial</td><td>11</td></tr><tr><td>Assembly</td><td>9</td></tr><tr><td colspan="2">Showing 1-5 of 6 rows First Prev Next Last</td></tr></table>			Occupational Class ▲	Structure Count ▲	Residential	575	Utility and Misc	139	Unclassified
Occupational Class ▲	Structure Count ▲													
Residential	575													
Utility and Misc	139													
Unclassified	24													
Commercial	11													
Assembly	9													
Showing 1-5 of 6 rows First Prev Next Last														
012	Ridgewood	1 Mile Buffer	View on Map	687	► Click to Expand	► Click to Expand	► Click to Expand							
010	Sawmill	1 Mile Buffer	View on Map	549	► Click to Expand	► Click to Expand	► Click to Expand							
005	Bergman	1 Mile Buffer	View on Map	480	► Click to Expand	► Click to Expand	► Click to Expand							
004	Scout Lake	1 Mile Buffer	View on Map	457	► Click to Expand	► Click to Expand	► Click to Expand							



VALUES AT RISK APP

Coordinat... Values at ... Select Layers Add Data Measure... Draw

+

-

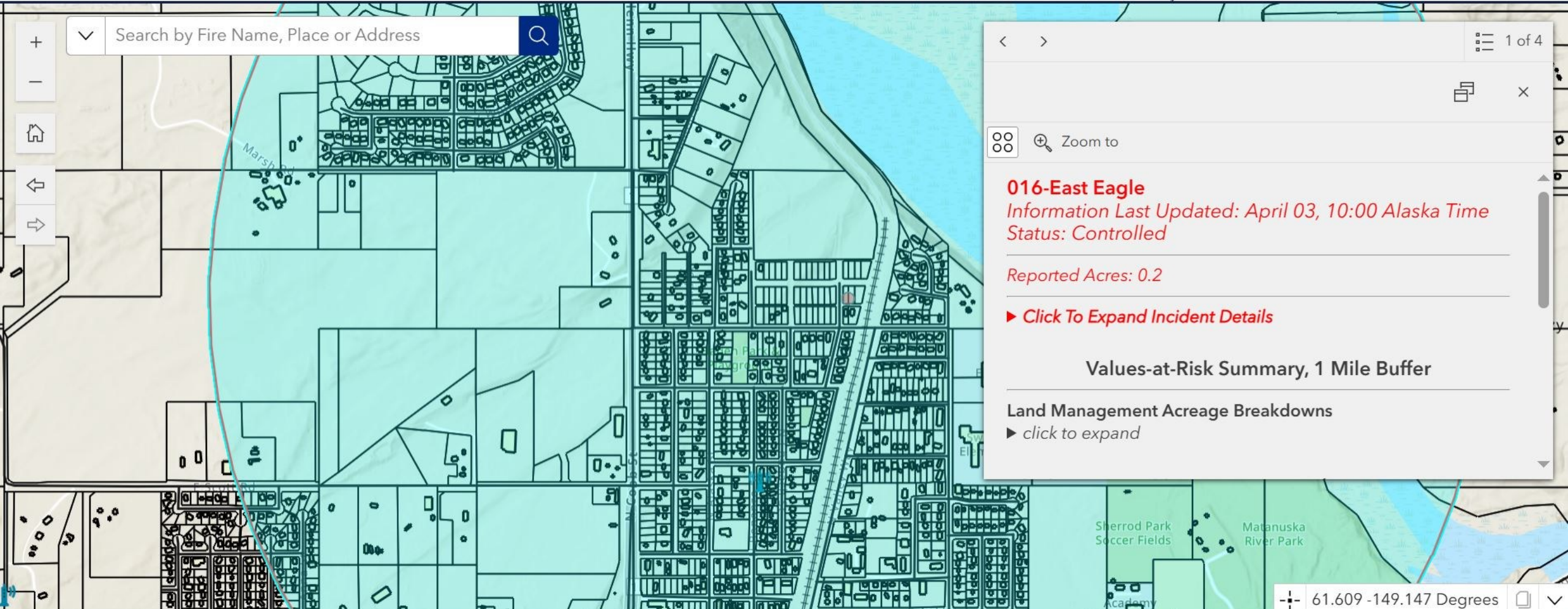
Home

Up

Down

▼

Search by Fire Name, Place or Address



< >

1 of 4

Zoom to

016-East Eagle

Information Last Updated: April 03, 10:00 Alaska Time

Status: Controlled

Reported Acres: 0.2

► Click To Expand Incident Details

Values-at-Risk Summary, 1 Mile Buffer

Land Management Acreage Breakdowns

► click to expand

Challenges & Potential Improvements

- Information gaps.
- Inconsistent representations of the same types of information.
- Concentric buffers are a very imprecise way of understanding a fires potential for risk and complexity.
- So far there have been relatively few voices guiding what information should be considered in the analysis.
- We have yet to see how stable the process is during peak fire activity.