



MGP Pro

Secure, on-demand access to Earth Intelligence

© 2024 Maxar Technologies

External Recipients

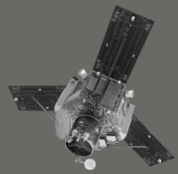
MAXAR
INTELLIGENCE



The Maxar satellite constellation

Maxar owns and operates the world's most sophisticated Earth imaging satellite constellation, providing the foundation for Maxar's capabilities in Earth Intelligence.

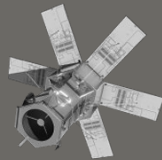
RETIRED / IMAGERY AVAILABLE IN ARCHIVE



IKONOS



QuickBird

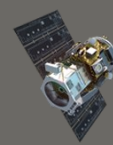


WorldView-4

ON-ORBIT / NEW AND ARCHIVE IMAGERY AVAILABLE



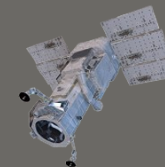
WorldView-1



GeoEye-1

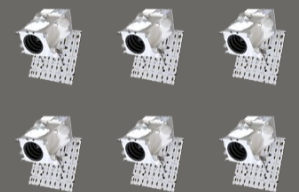


WorldView-2



WorldView-3

In production



WorldView Legion



Maxar Geospatial Platform (MGP)

Fast and easy access to the world's most advanced Earth intelligence, simplifying the discovery, purchasing and integration of geospatial data and analytics.

- Highest resolution satellite imagery
- Stunning imagery basemaps
- Analysis-ready data
- Image-based change detection
- Instant analytic outputs

3.8M

Square kilometers of Earth imagery capacity each day

125+

Petabytes of data in our imagery library

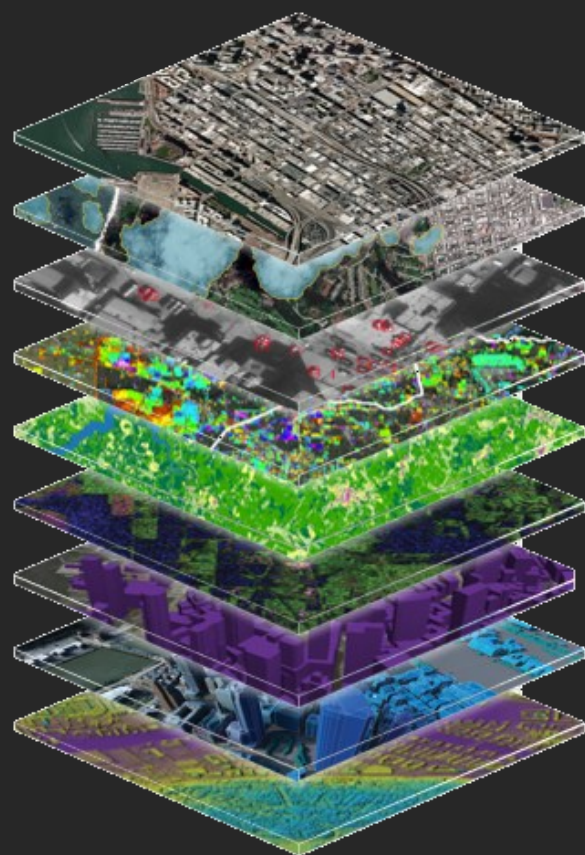
20+ year

Inventory of global change in high-resolution



Access on your terms

One platform for premium data and insights



Web access



Global coverage



APIs, SDKs, plugins



Daily updates



Single sign-on



Transparent pricing



Tap into the ultimate source for on-demand Earth Intelligence

MGP Pro is the premier, cloud-based subscription platform for secure and timely access to Earth Intelligence.

Subscribers can quickly access over 3 million square kilometers of daily image collections, plus more than 6 billion square kilometers of archived imagery at up to 30 cm resolution.

- Highest commercially available resolution; up to 30 cm and derived 15 cm HD
- 20+ year, 125+ petabyte image archive for change detection
- Complete global coverage



Premium content





Most comprehensive library of high-resolution satellite imagery

Premium Content

- Global coverage
- 4+ year curated imagery (online)
- 20+ year imagery library (125+ PB archive)
- Adding about 3 million sqkm every day
- New imagery available within hours
- Individual image strips with key metadata
- Access to SWIR and Stereo imagery



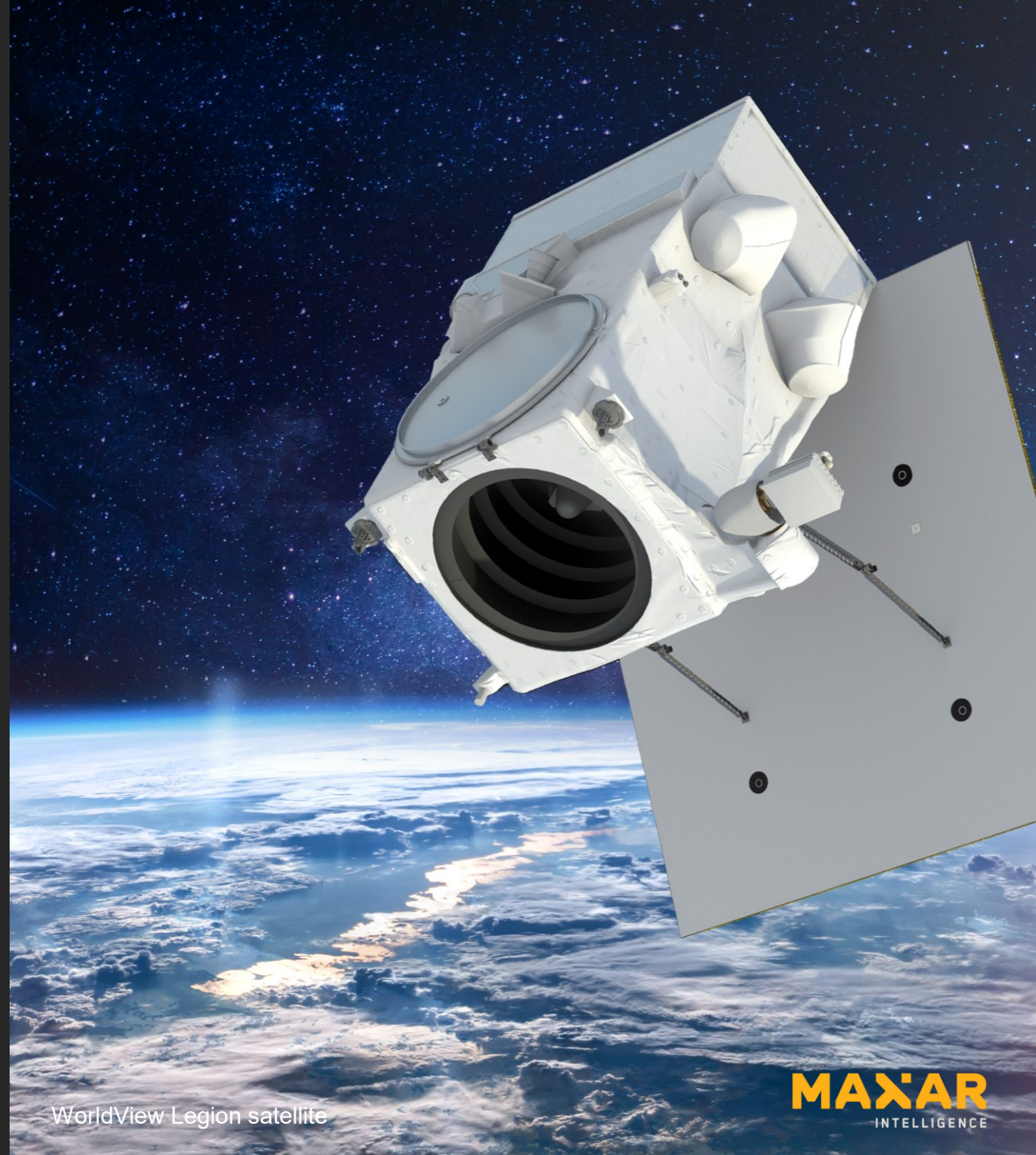


Access to WorldView Legion

WorldView Legion™ is the next generation of Maxar's high-resolution Earth observation satellites.

- Very high-resolution imagery (30 cm class)
- 8-band VNIR multispectral imagery for a wide variety of applications
- Industry-leading precision geolocation accuracy (<5 m CE90) without ground control points

MGP Pro users will have access to new collects via API and browser app when available.



WorldView Legion satellite

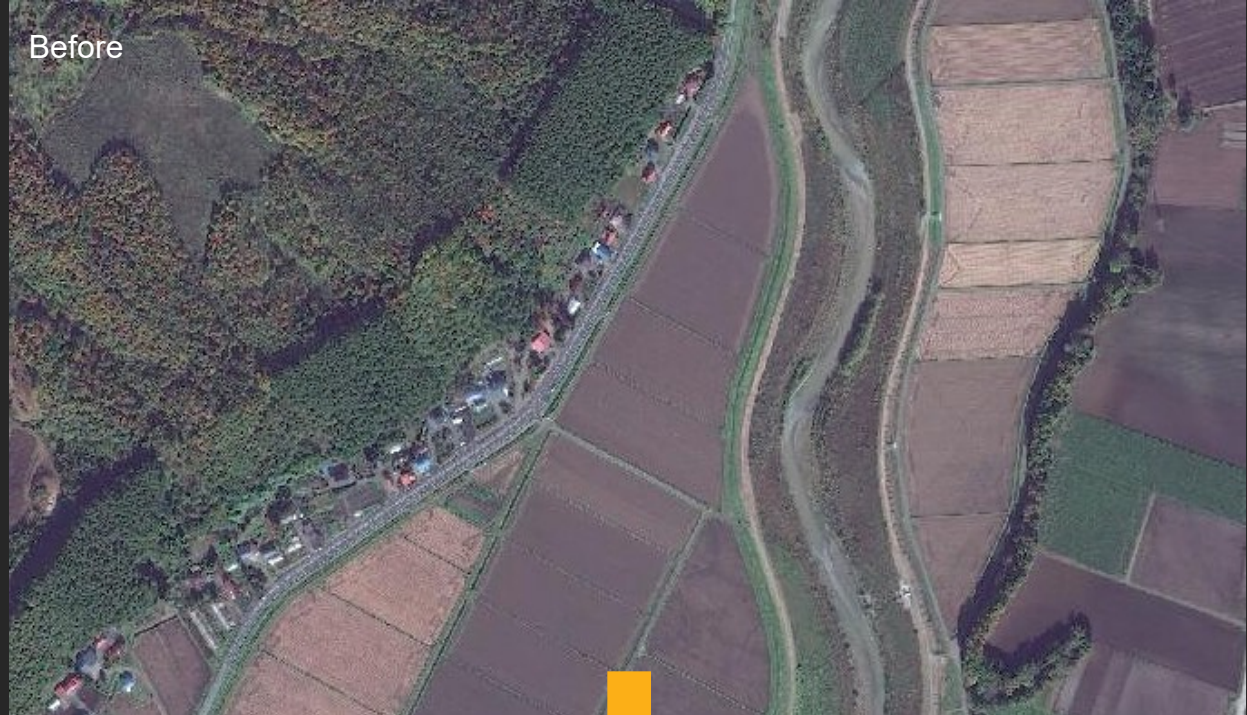


Most timely satellite imagery of world events

FirstLook

- 150+ major global events annually
- Image access hours after collection
- Pre- and post-event imagery for change/damage assessment

Before



After





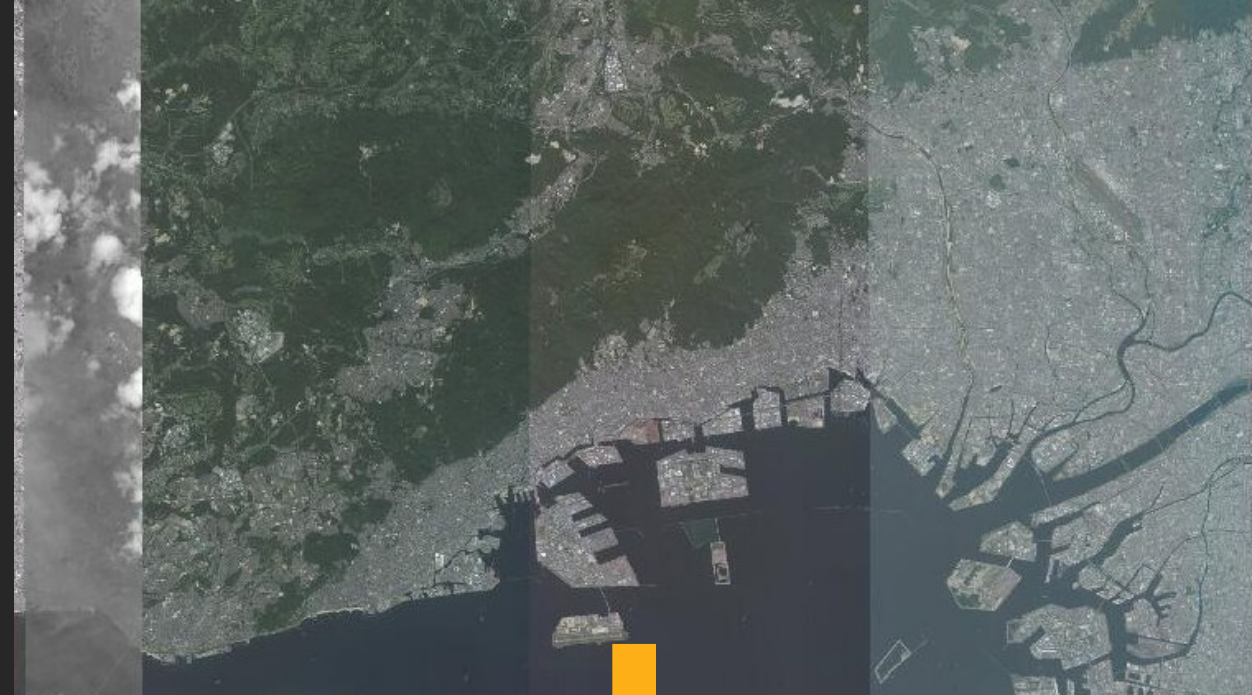
Most advanced Vivid basemaps

Vivid™ Standard 30 cm HD

- The first commercially available, online global basemap with consistent 30cm GSD and 5m CE90 accuracy.

Vivid Advanced 15 cm HD

- A high-quality imagery basemap for high-interest areas across the globe, with current, high-accuracy imagery processed to 15 cm GSD and 3-5m CE90 accuracy.





Change Monitoring (CM)

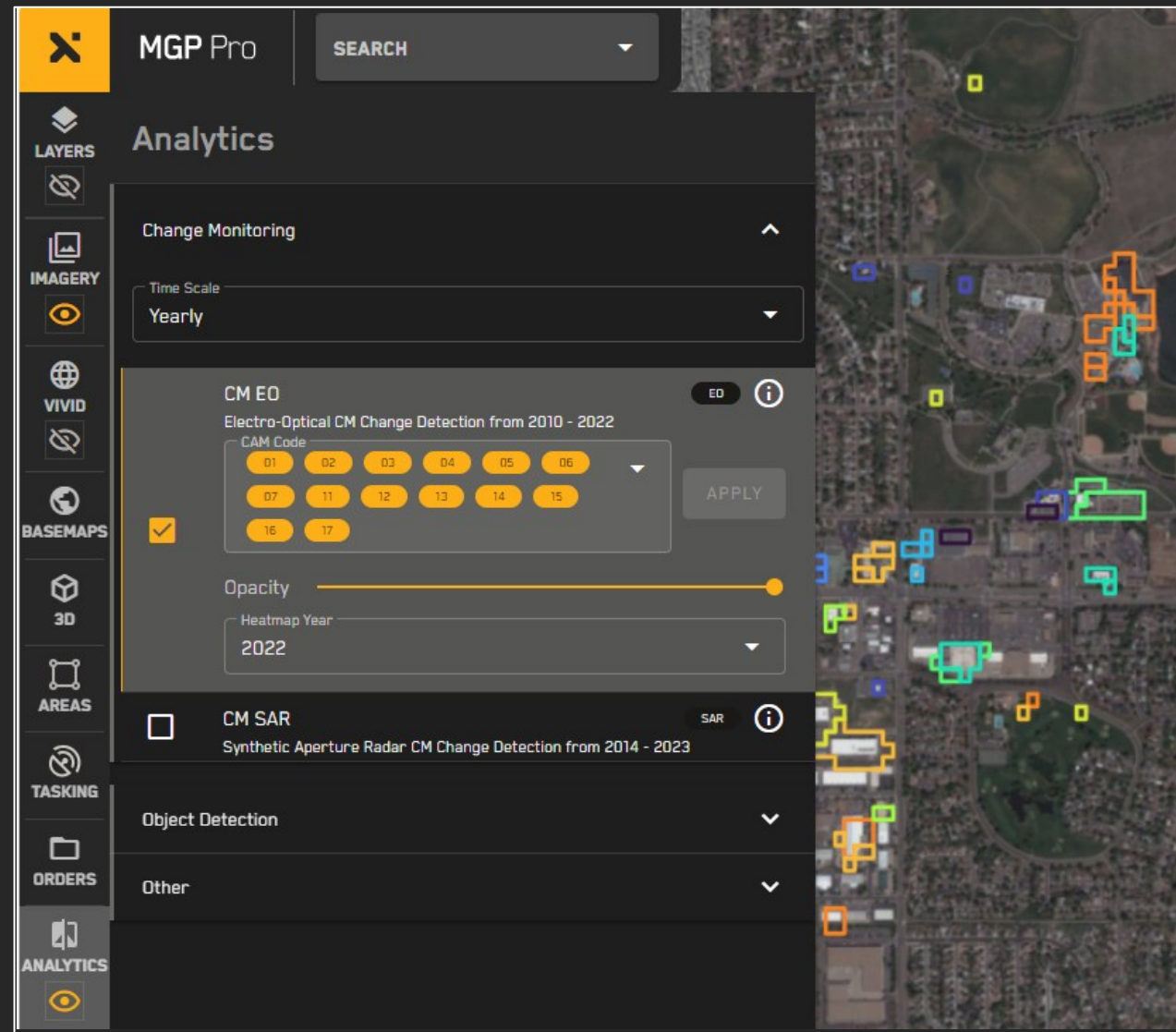
At your fingertips with MGP Pro browser app

Data Types:

- CM Electro-Optical
- CM Synthetic Aperture Radar

Available for integration into application workflows:

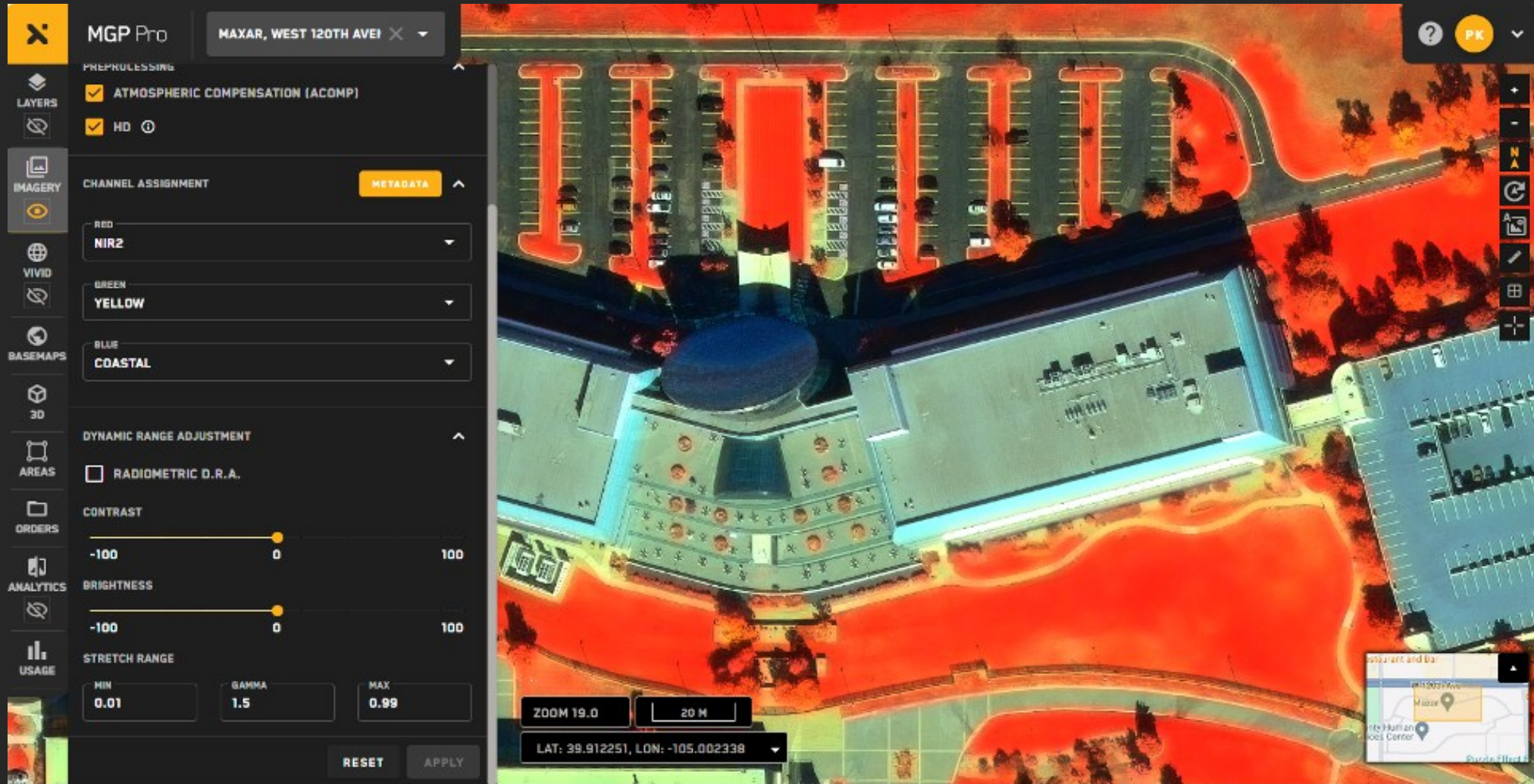
- COTS (QGIS, ESRI)
- OGC (WMS, WMTS, WFS)
- Raster Analytics API
- REST Ordering API



MGP Pro UI showing CM-EO over Westminister, Colorado, USA



Image Exploitation – Leveraging MGP Raster Analytics API



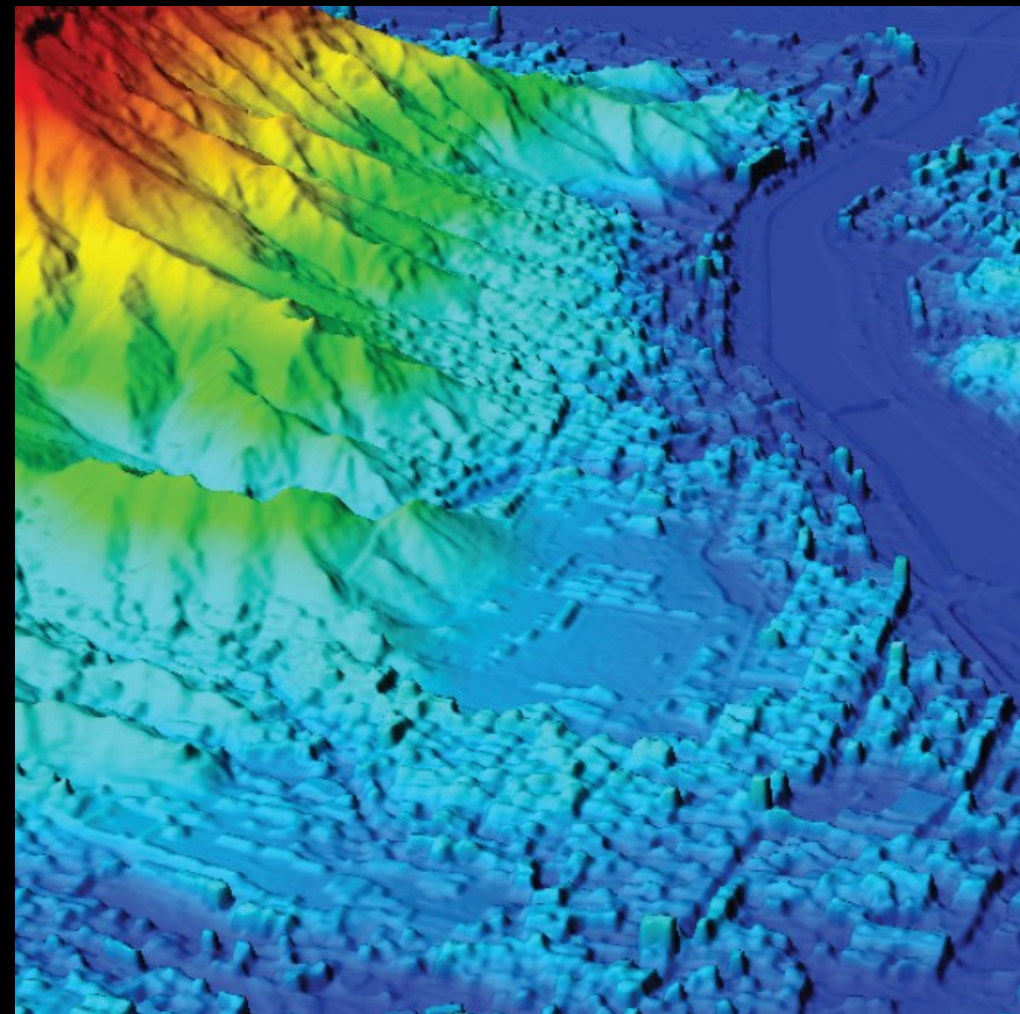
MGP Pro UI, Exploit Mode, Maxar HQ, Westminster, CO



Ordering Precision3D Data Products

All Precision3D products are based on commercial satellite imagery and built using industry-leading, automated 3D modeling algorithms.

- Precision3D Digital Surface Model (DSM), Precision3D Digital Terrain Model (DTM), Elevation Bundle (DSM + DTM), Precision3D 3D Surface Model (3DSM), Precision3D True Ortho, and 3D Bundle (3DSM + DSM + True Ortho) are available from MGP Pro UI and API.
- DTM, DSM and Elevation Bundle are available with 4 post-spacing options, 0.5m, 1m, 2m, and 4m.
- Industry leading accuracy: Absolute: 3 m LE90, 3 m CE90, Relative: 1 m LE90, 1 m CE90 at 0.5m post-spacing



Precision3D DSM of Al Mukalla, Yemen



Tasking

- Ordering new collects via API and/or MGP Pro UI will be available starting Q2 2024 for approved MGP Pro customers

The screenshot displays the MGP Pro Tasking interface. On the left is a sidebar with navigation options: IMAGERY, VIVID, BASEMAPS, AREAS, and TASKING (which is highlighted). The main panel shows the 'Tasking' section with a 'Show High Demand Areas' toggle. A blue notification banner states: '50 sqkm area automatically selected. To change your selected area, click and drag the selection area on the map.' Below this, the 'SELECTED AREA' section shows 'AREA SIZE' set to 'Specific Area' and 'SPECIFIC AREA' set to 'My Custom Area #1'. The coordinates 'LAT: 11.0121, LON: 179.6643' are displayed at the bottom. An orange 'ZOOM TO EXTENT' button is also visible. Overlaid on the bottom right is a REST client window showing a POST request to the endpoint `{{(host)}}/tasking/{{(version)}}/tasking`. The request body is in JSON format:

```
1 {
2   "start_datetime": "2024-03-24T16:13:00Z",
3   "end_datetime": "2024-5-13T16:13:00Z",
4   "aoi_geojson": {
5     "coordinates": [
6       [
7         [-106.8, 35.1],
8         [-106.4, 35.1],
9         [-106.4, 35.4],
10        [-106.8, 35.4],
11        [-106.8, 35.1]
7
```





Real-world applications



Technology



Civil
Government



Energy



Emergency
& Insurance



Automotive



MGP Pro for mapping

As cities change and expand, maps and related location-based services (LBS) must keep up.

Fresh Maxar imagery strips and Vivid basemaps enable human digitizers and AI/ML algorithms to create and maintain HD maps at scale.

Full access to the MGP APIs under the MGP Pro subscription can be leveraged for automated mapping workflows.



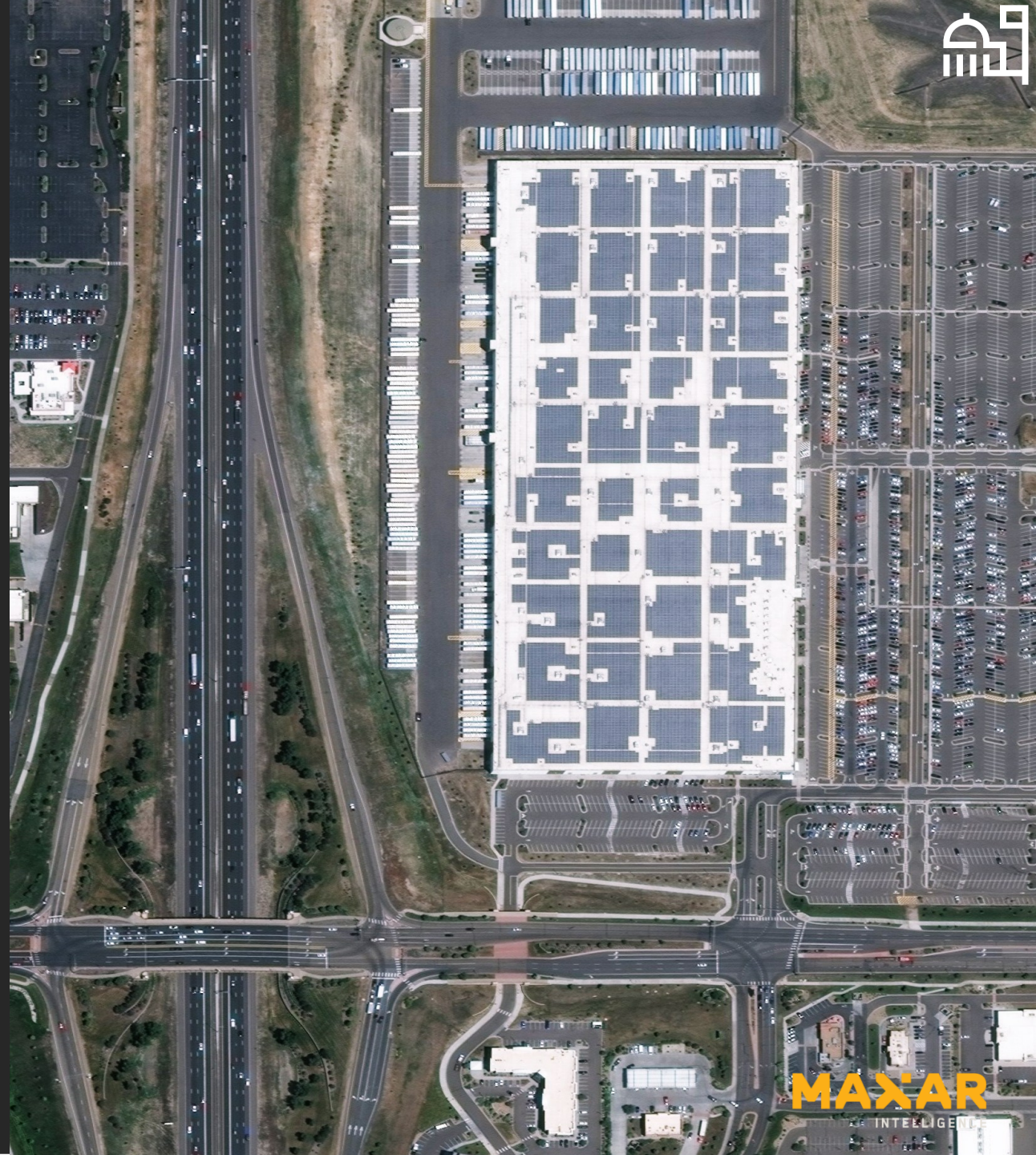


MGP Pro for civil government

As populations grow, cities and suburban areas must adapt planning efforts to address their growing community's needs.

But without current, accurate maps, government officials aren't making planning decisions with a reliable foundation.

With Vivid, government organizations have a consistent picture over large areas for land tenure mapping to **explore urban development opportunities and plan for resiliency and disaster response procedures.**





MGP Pro for energy

Energy companies must comply with strict regulations for their properties. But often, their assets span the globe in remote locations, making it difficult to monitor on the ground.

Monitoring these structures from afar is critical for maintaining compliance and a competitive edge. However, it can often times be costly and dangerous to send ground teams on location for asset assessment.

Imagery collection alerts from Daily keep organizations up-to-date on imagery collections, so they can quickly **monitor activity, assets and provide efficient insights to when it's necessary to respond to potential crises, while proactively planning for the future.**



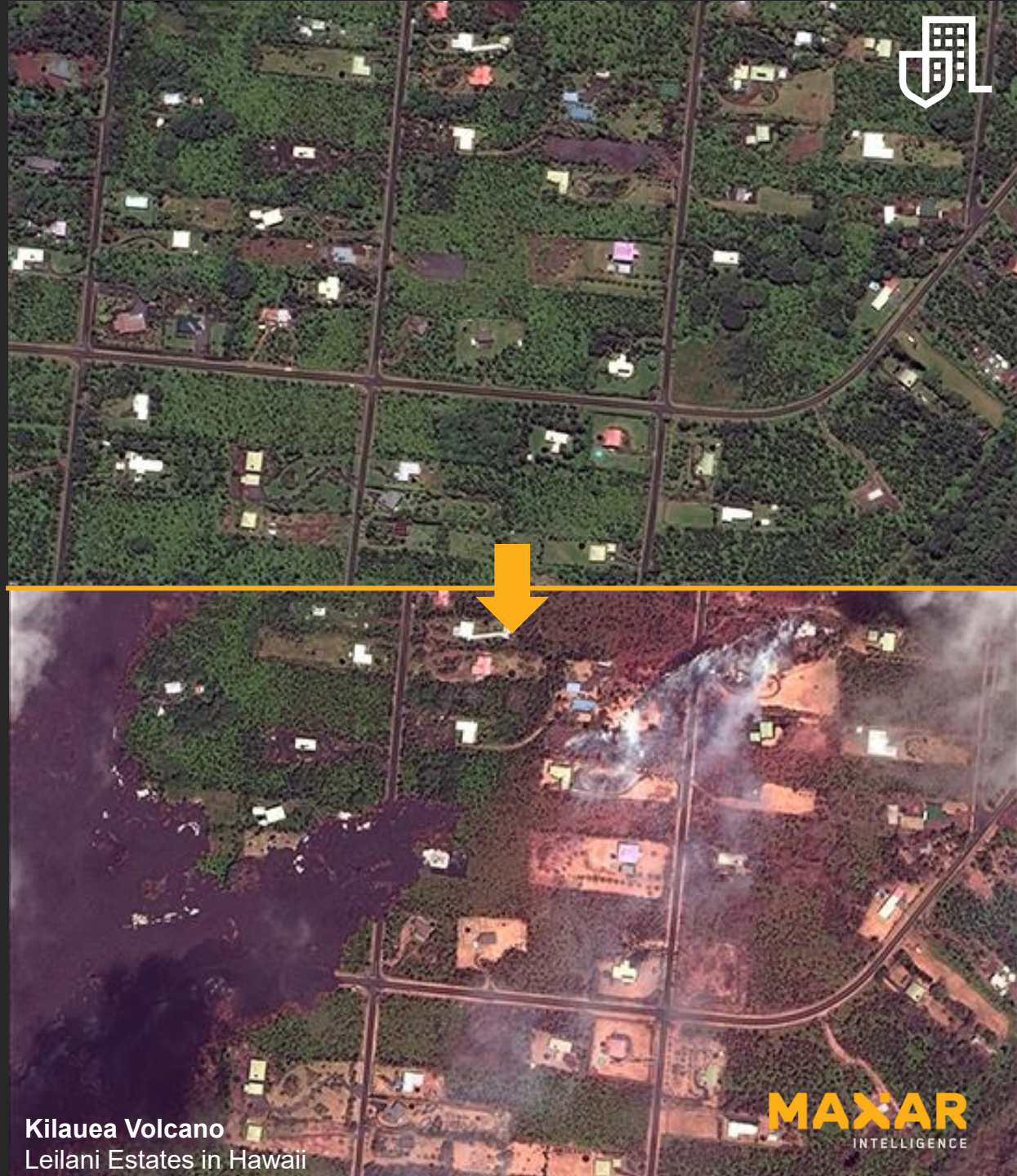


MGP Pro for emergency response

In the wake of any natural disaster, emergency responders and government officials must coordinate search and rescue operations while assessing damage across large areas.

A critical challenge: the ability to identify safe routes to reach impacted areas.

MGP Pro delivers the most current imagery, while our 20+year image library provides access to the pre-event imagery **enabling expedited search and rescue, damage assessment, route planning and resource deployment at any scale.**



MAXAR

MAXAR.COM