

An aerial photograph of a town nestled in a valley, with large mountains in the background under a warm, golden sunset sky. The town features a mix of residential and commercial buildings, green fields, and a network of roads. The mountains are rugged and partially covered in snow or light-colored rock.

AI is Your Friend, Not Your Replacement

How AI Can Modernize the GIS Professional's Role In Today's World

Company Background

- **Founded in 2020**
- **Built world's first full-scale 3D digital twin for Microsoft Flight Simulator**
- **Focused on defense, intelligence and local government**
- **Backed by defense and government-focused investors**



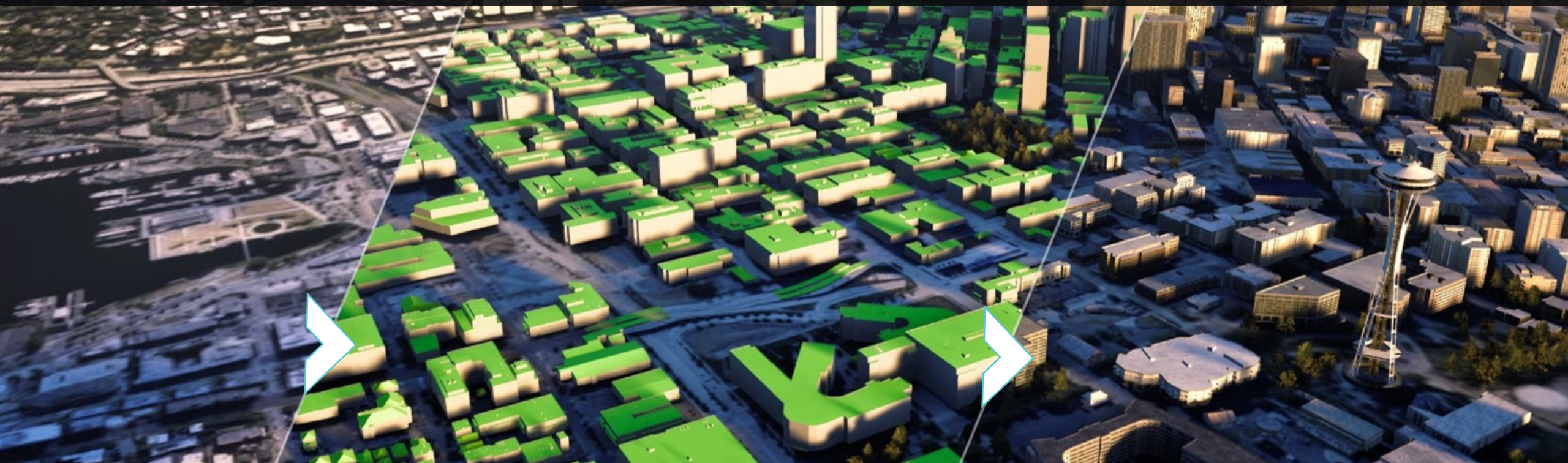
Unleash YOUR Potential – From Pixels to Insights

INPUT

Any Raster Data

ORCA HUNTR™
No-Code AI

REPLIKA SYNTH3D™
3D Terrain Generation



Blackshark enables **anyone** to extract insights from pixels in minutes, turning sensor and GIS data into analytics-ready 3D environments

What AI Means to You – What Comes to Mind?



What AI Means to You – Hasta la Vista, Baby?



An aerial photograph of a city area with various GIS overlays. A large green area is on the left, and a dense grid of blue and green polygons covers the right side. A road network is visible throughout the image.

GIS Today

Give a man a fish and you feed him for a day.
Teach a man how to fish and you feed him for a lifetime.

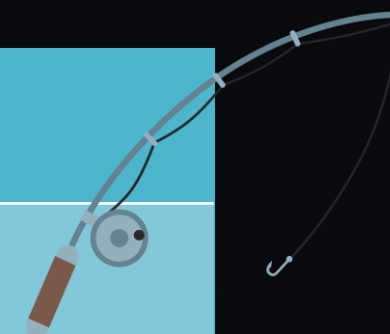
-LAO TZU



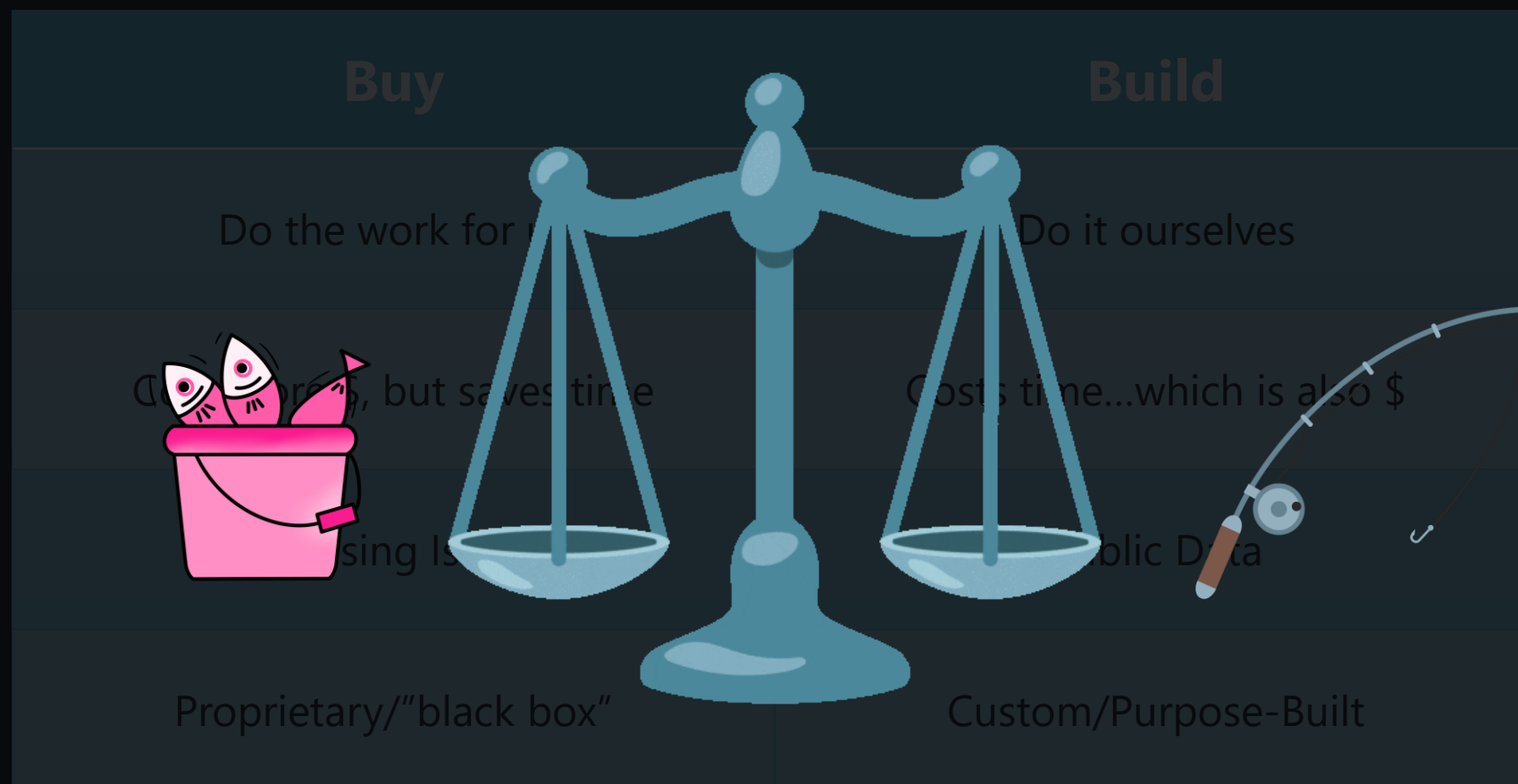
The GIS Industry Today – More Fish, Please



Buy	Build
Do the work for us	Do it ourselves
Cost more \$, but saves time	Costs time...which is also \$
Licensing Issues	Public Data
Proprietary/"black box"	Custom/Purpose-Built



The GIS Industry Today – More Fish, Please



The AI Industry Today – Perception is Everything?

- Scalability
- Productivity
- Computational Power
- Time/Cost Efficiencies
- Automation
- Buzzwords galore
- Epic graphics



The AI Industry Today – Still in Kansas, Toto



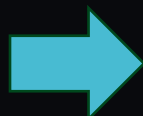
The AI Industry Today – Peeking Behind the Curtain

Data for Labelling



The AI Industry Today – Peeking Behind the Curtain

Data for Labelling

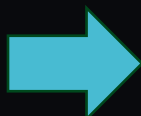


Outsourced Labeling

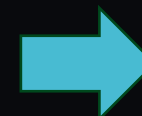


The AI Industry Today – Peeking Behind the Curtain

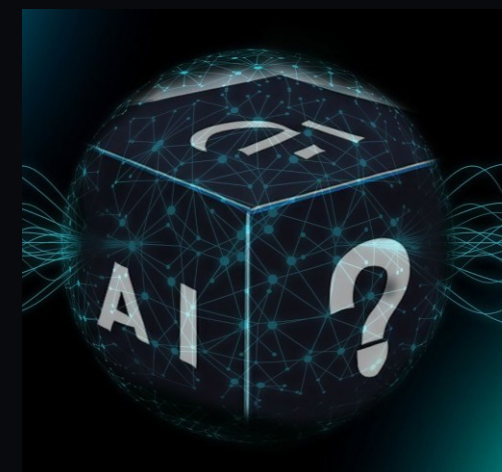
Data for Labelling



Outsourced Labeling



Black box / "AI"



The AI Industry Today – The “Black box” of AI

Computer Vision

Machine Learning

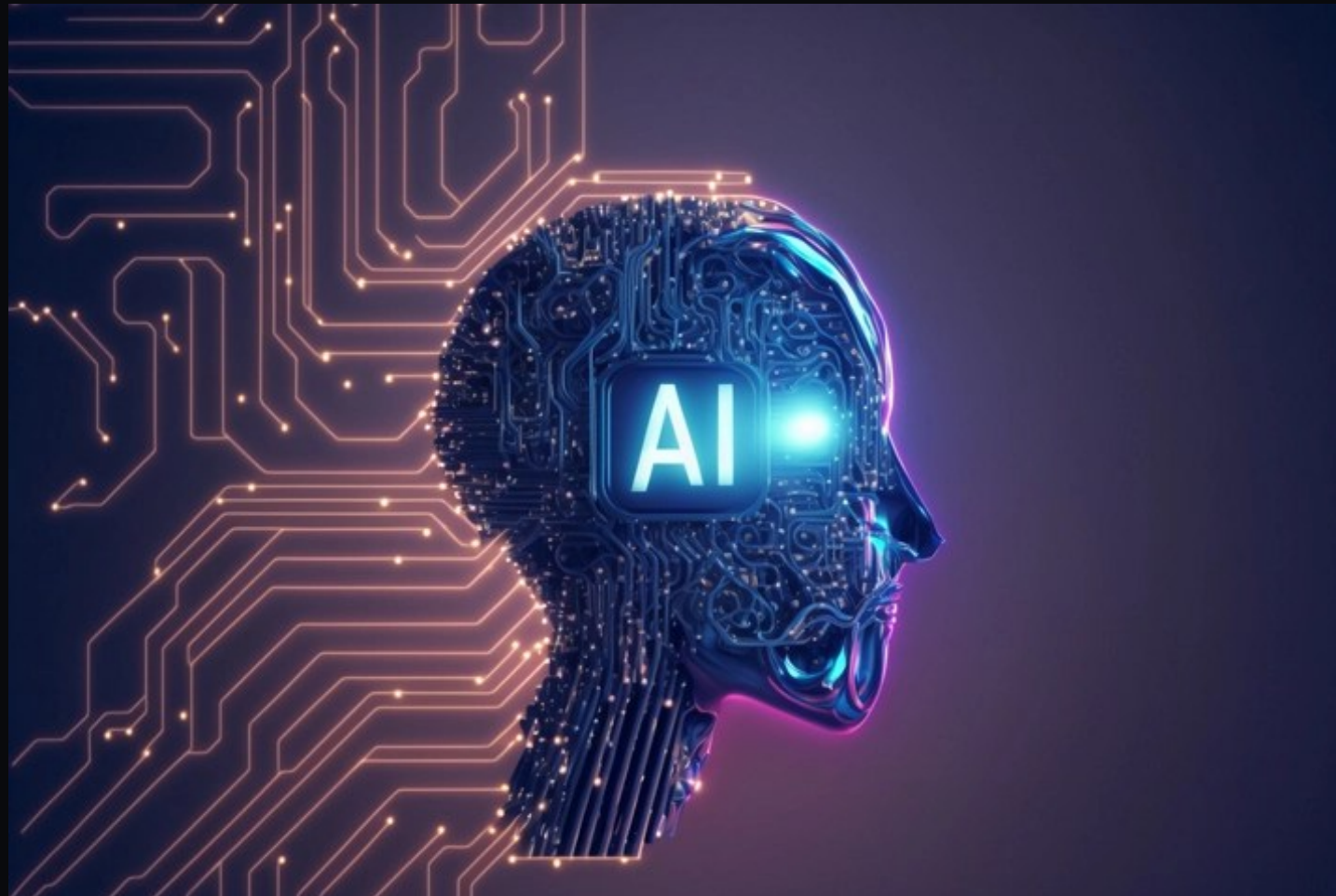


“Proprietary/IP”

One Size Fits All.... Or One

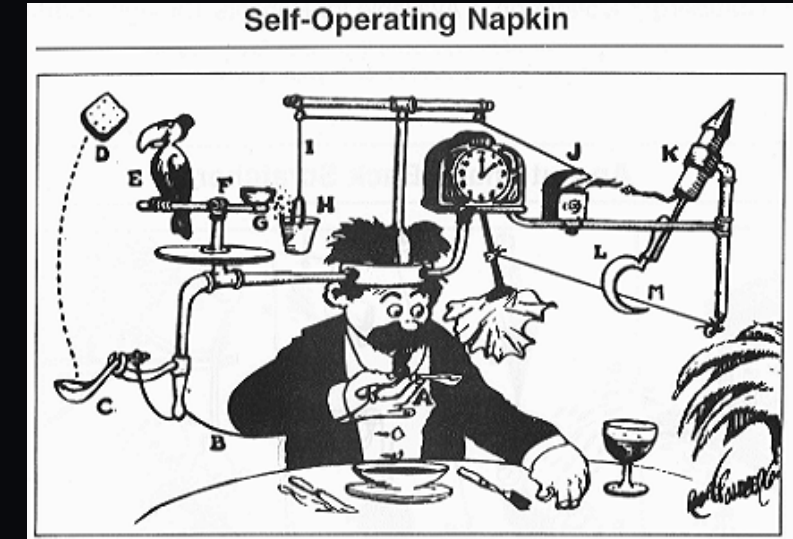
LOTS of QA/QC

The AI Industry Today – Ta-da!



The AI Industry Today – Reality Check

- LOTS of hand labelling
- Laborious
- Expensive
- Requires coding/scripting
- Speed/Scale = Processing \$
- Maintains reliance on vendors
- Still “Buy v Build”
- Heavy on the “A”, lite on the “I”



Your Role Moving Forward

AI

Your Role Moving Forward – Meet EITL



Your Role Moving Forward – Meet EITL

Expert-in-the-loop (EITL) machine learning is a collaborative approach that integrates human input and expertise into the lifecycle of machine learning (ML) and artificial intelligence systems



Garbage in Garbage OUT



Your Role Moving Forward – An Expert at the Helm

AI is...

- Only as good as the human inputs
- As intelligent as YOU make it
- A tool, not a replacement
- A mechanism for amplifying your skills & output
- A force multiplier for organizations
- An inevitable reality
- A friend, not an enemy



Industry Example – EITL in Action

Scene

Select or manage underlying aerial imagery.



RESET ZOOM

Scene

Eaton_15.TIF

Brightness Contrast
Gamma Exposure
Saturation [RESET](#)

MANAGE SCENES

AI Model

Select, create or delete AI Models.

AI Model

[CREATE NEW](#) [EDIT](#) [DELETE](#)

Previous Detection Runs

Inspect previously started Detection Runs.

Select an AI Model first.

Please select or create an AI Model first



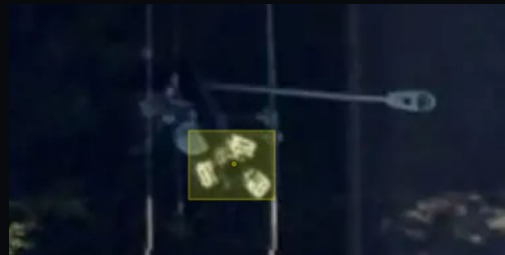
Feature Extraction Examples



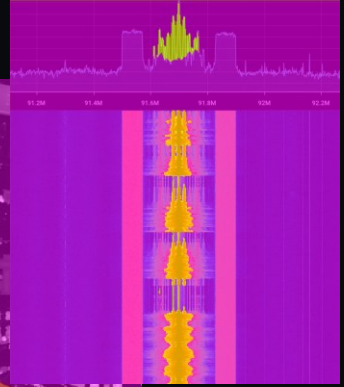
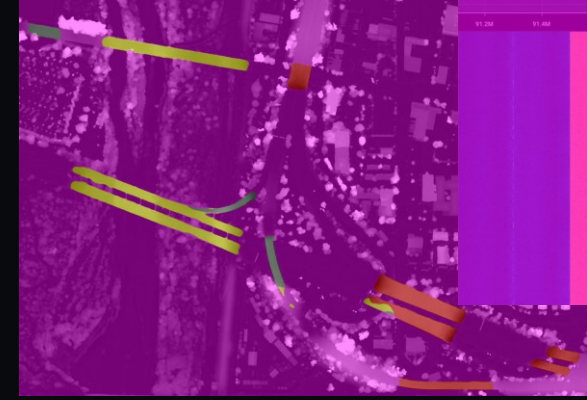
Satellite Imagery



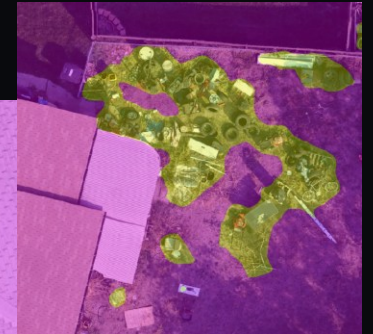
Aerial Imagery



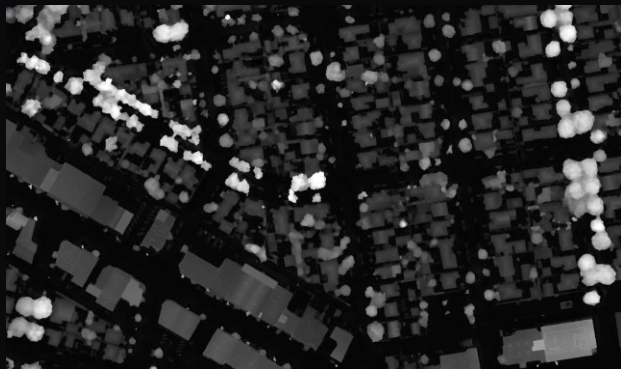
Other Training Data



UAS



Advanced Feature Extraction using nDSM



Original nDSM with default settings



Hillshading applied to aid in labeling and feature segmentation



Residential Building Commercial Building Tree (Multiple), Tree (Single)



Conclusion – AI is Your Friend

- "Good data in, good data out" starts with YOU
- AI is an accelerant, not a replacement
- EITL AI merges the benefits of Buy & Build
- EITL AI simplifies the complexity of geo-int

AI shouldn't scare you, it should excite you!

Thank You!

Brett Clark

Brett@Blackshark.AI

+1-317-775-2319