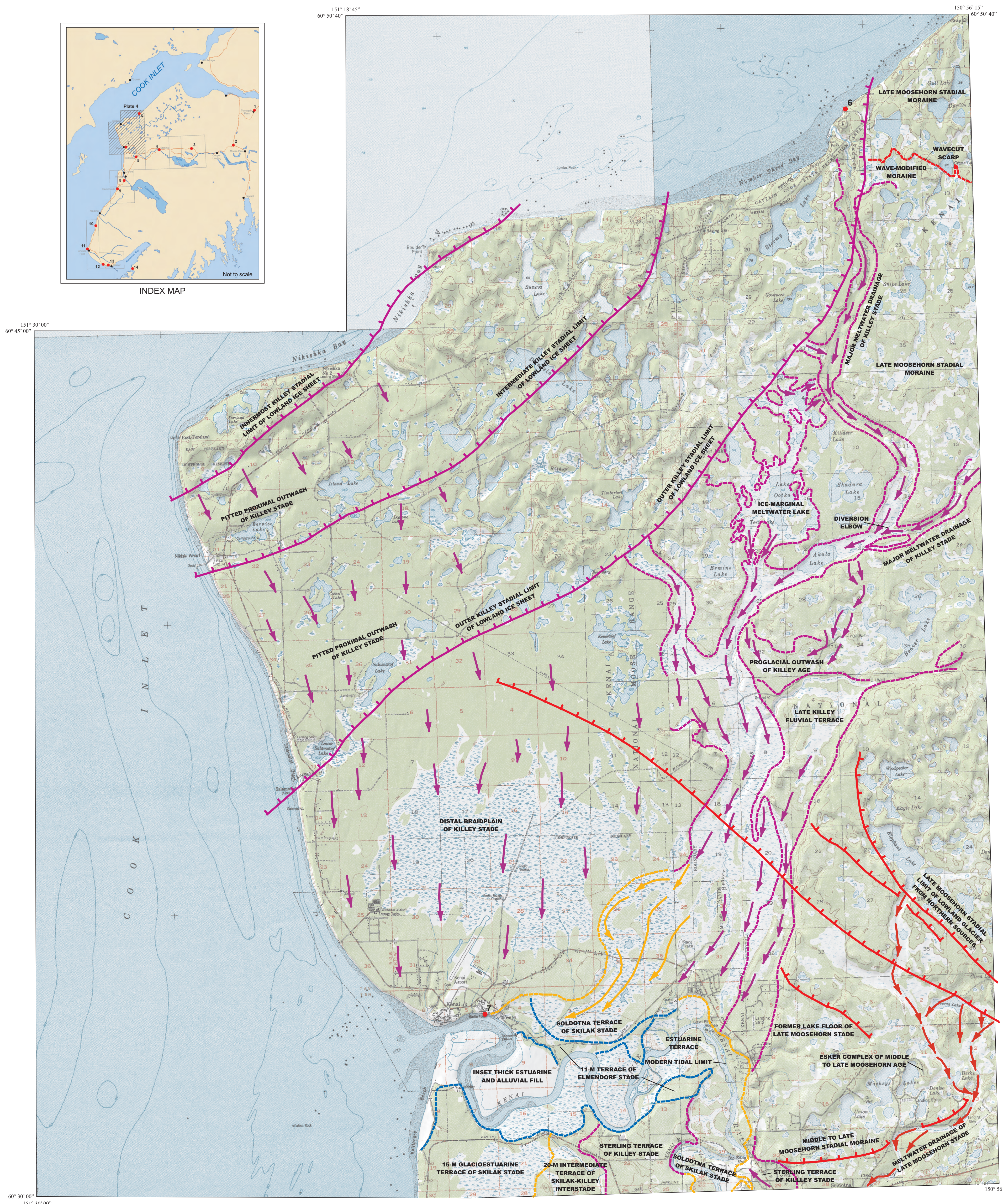


INDEX MAP



This paleogeographic map shows the distribution of glacial moraines and other landforms during the four stades of the last major glaciation in Kenai Peninsula lowland as interpreted from aerial photographs, 1:25,000-scale topographic maps, field exposures, and samples studied from 1976 through 2006. Our model for these events differs from models previously proposed (Miller and Dobrovoly, 1959; Karlstrom, 1964; Reger and Updike, 1983; Schmoll and others, 1984, 1999; Schmoll and Yehle, 1986; and Reger and Pinney, 1996, 1997). These differences partly reflect the normal advance of knowledge that results from improved analytical methods, better aerial photographs and topographic maps, and more data from new exposures and subsurface borings, and they partly reflect different interpretations of available data. As our model is tested by new data and new concepts in the future, we expect and welcome changes.

References Cited
Karlstrom, T.N.V., 1964, Quaternary geology of the Kenai Lowland and glacial history of the Cook Inlet region, Alaska: U.S. Geological Survey Professional Paper 443, 69 p., 2 pls., 5 sheets, various scales.

Miller, R.D., and Dobrovoly, Ernest, 1959, Surficial geology of Anchorage and vicinity, Alaska: U.S. Geological Survey Bulletin 1093, 128 p., 1 sheet, scale 1:63,360.

Reger, R.D., and Pinney, D.S., 1996, Late Wisconsin glaciation of the Cook Inlet region with emphasis on Kenai Lowland and implications for early peopling, in Davis, N.Y., and Davis, W.E., eds., *Adventures through time: Readings in the anthropology of Cook Inlet, Alaska*, Anchorage, Cook Inlet Historical Society, p.13-35.

—1997, Last major glaciation of Kenai Lowland, in Karl, S.M., Vaughn, N.R., and Ryherd, T.J., eds., 1997 guide to the geology of the Kenai Peninsula, Alaska: Anchorage, Alaska Geological Society, p.54-67.

Reger, R.D., and Updike, R.G., 1983, Upper Cook Inlet and the Matanuska Valley, in Pewé, T.L., and Reger, R.D., eds., *Guidebook to permafrost and Quaternary geology along the Richardson and Glenn Highways between Fairbanks and Anchorage, Alaska*: Alaska Division of Geological & Geophysical Surveys Guidebook 1, p. 185-263, 1 sheet, scale 1:250,000.

Schmoll, H.R., and Yehle, L.A., 1986, Pleistocene glaciation of the upper Cook Inlet basin, in Hamilton, T.D., Reed, K.M., and Thorson, R.M., eds., *Glaciation in Alaska: the geologic record*: Anchorage, Alaska Geological Society, p.193-218.

Schmoll, H.R., Yehle, L.A., Gardner, C.A., and Odum, J.K., 1984, *Guide to surficial geology and glacial stratigraphy in the upper Cook Inlet basin*: Anchorage, Alaska Geological Society guidebook, 89 p.

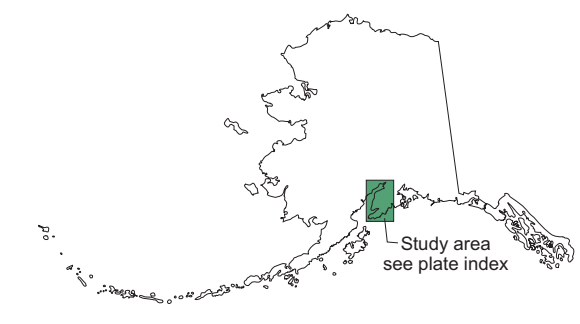
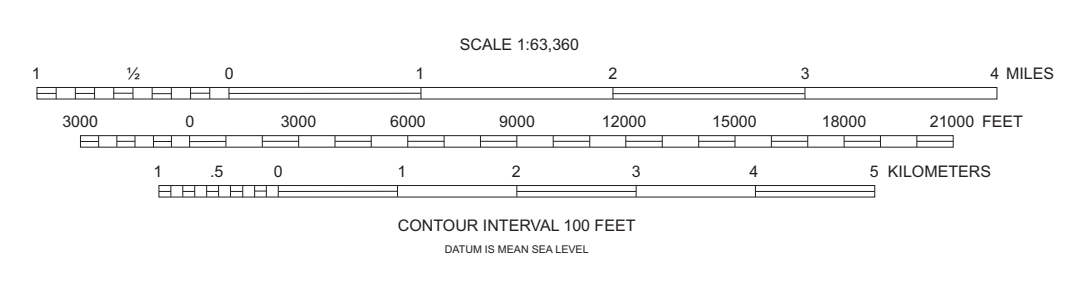
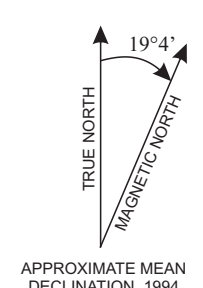
Schmoll, H.R., Yehle, L.A., and Updike, R.G., 1999, Summary of Quaternary geology of the Municipality of Anchorage, Alaska: *Quaternary International*, v.60, p. 3-36.

Explanation of map symbols

The following symbols appear on at least one of the six map sheets in this guidebook set but may not be present on other map sheets

- 3 Stops
- Moraine limit, Naptowne undifferentiated
- +— Moraine limit, Moosehorn stade
- +— Moraine limit, Killey stade
- +— Moraine limit, Skilak stade
- +— Moraine limit, Elmendorf stade
- Glacial lake shoreline, Moosehorn stade
- Glacial lake shoreline, Killey stade
- Glacial lake shoreline, Skilak stade
- Meltwater drainage, pre-Naptowne glaciation
- Meltwater drainage, Moosehorn stade
- Meltwater drainage, Killey stade
- Meltwater drainage, Skilak stade
- Limit of alluvial fan, Killey stade
- ▨ Hanging delta, Moosehorn stade
- Margin of fluvial terrace, Moosehorn stade
- Margin of fluvial terrace, Killey stade
- Margin of fluvial terrace, Skilak stade
- Margin of fluvial terrace, Elmendorf stade
- Landslide complex, post-Naptowne
- Ice-shoved rampart complex, post-Naptowne

Base from U.S. Geological Survey, Parts of Kenai C-3, C-4 quadrangles, Alaska, scale 1:63,360. Base map digitally created with All Topo Version 7 Pro by Igage Mapping Corporation, Salt Lake City, Utah.



Digital Cartography by Alfred G. Sturmann

Affiliations:
¹ Reger's Geologic Consulting
 P.O. Box 3326, Soldotna, AK 99669
 rdreger@acsalaska.net
² State of Alaska, Division of Geological & Geophysical Surveys
 3354 College Road, Fairbanks, AK 99709
³ U.S. Fish and Wildlife Service, Kenai National Wildlife Refuge
 P.O. Box 2139, Soldotna, AK 99669

Paleogeographic map of Kenai—Nikiski area, northwestern Kenai Peninsula lowland, Alaska

by

Richard D. Reger ¹, Alfred G. Sturmann ², Edward E. Berg ³, and Patricia A. C. Burns ²

2007