



E. R. Michaelis
 Manager,
 Geological Research

#6

Amoco Production Company

4502 East 41st Street
 Post Office Box 3385
 Tulsa, Oklahoma 74102
 Research Center
 918 - 660-3779

June 24, 1985

85175ART0206

Mr. Michael T. Minder
 Alaska Oil and Gas Conservation
 Commission
 3001 Porcupine Drive
 Anchorage, AK 99501

RECEIVED

JUL 01 1985

Alaska Oil & Gas Cons. Commission
 Anchorage

Dear Mr. Minder:

I am enclosing a set of GC/MS mass fragmentograms on North Slope samples, as per our agreement dated April 10, 1985 (signed by J. A. Williams). Included are M/Z 191 and M/Z 217 fragmentograms on 11 samples, some of which are composites of the samples you provided. All 16 samples we obtained were analyzed, either individually or as part of a composite. Following is a list of specific intervals from which samples were extracted for analysis.

<u>Sample Set No.</u>	<u>Well</u>	<u>Intervals</u>	<u>Amoco Spl. Nos.</u>
565	Arco Oliktok Pt. #1	Composite, 3022-3023'	J-5347
		3029-3030'	J-5348
		3035-3036'	J-5349
565	Arco Oliktok Pt. #1	3453-3454'	J-5350
285	Arco W. Sak R. St. #1	4140-4150'	J-5352
285	Arco W. Sak R. St. #1	6530-6531'	J-5353
567	Arco W. Sak #25	3778-3779'	J-5351
554	Arco W. Sak #24	Composite, 4350-4380'	J-5354
		4410-4440'	J-5355
348	Exxon Alaska St. A-1	12443-12444'	J-5361
348	Exxon Alaska St. A-1	12462-12463'	J-5362
599	Conoco Milne Pt. A-2	Composite, 8194-8195'	J-5358
		8202-8203'	J-5359
		8247-8248'	J-5360
561	Conoco Milne Pt. B-3	7421-7422'	J-5356
563	Conoco Milne Pt. C-3	8099-9000'	J-5357

All unused samples will be returned to you under separate cover.

Again, many thanks for your cooperation in providing use of these samples. I would also like to express our appreciation to the Alaska Commission for permitting use of valuable well sample material.

Very truly yours,

Eric R. Michaelis
/su

Eric R. Michaelis

JAW:cs
Enclosure

PEAK IDENTIFICATION

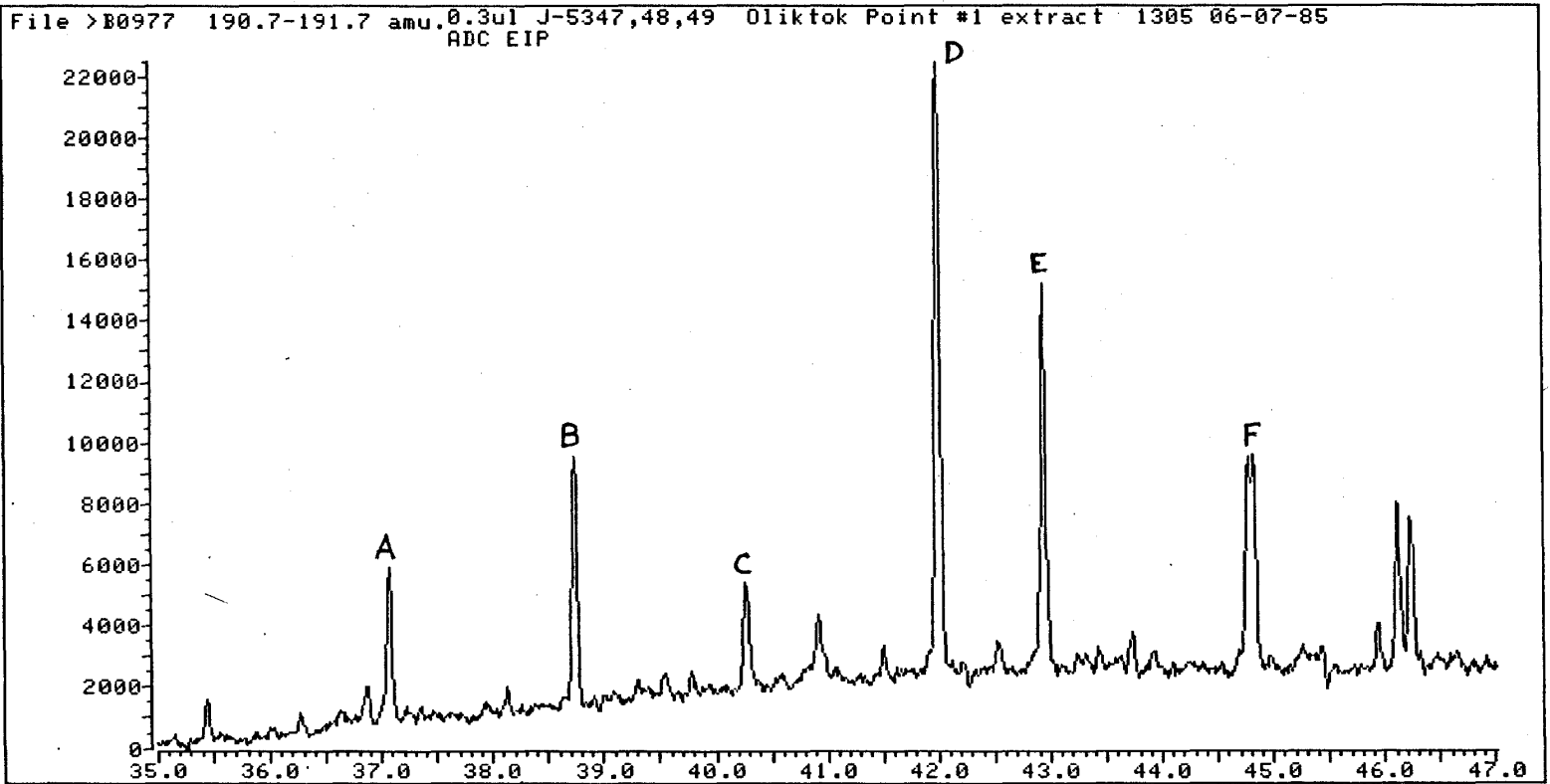
M/Z 191

<u>Peak</u>	<u>Compound</u>	<u>Abbreviation</u>
A	C ₂₀ tricyclic terpane	
B	C ₂₁ tricyclic terpane	
C	C ₂₂ tricyclic terpane	
D	C ₂₃ tricyclic terpane	
E	C ₂₄ tricyclic terpane	
F	C ₂₅ tricyclic terpane	
G	18 α (H)-trisorneohopane	Ts
H	17 α (H)-trisorhopane	Tm
I	17 α (H)-bisnorhopane	28 hopane
J	17 α (H),21 β (H)-norhopane	29 hopane
K	17 β (H),21 α (H)-norhopane	29 moretane
L	17 α (H),21 β (H)-hopane	30 hopane
M	17 β (H),21 α (H)-hopane	30 moretane
N	17 α (H),21 β (H)-homohopane (22S)	31S hopane
O	17 α (H),21 β (H)-homohopane (22R)	31R hopane
P	Gammacerane	
Q	17 α (H),21 β (H)-bishomohopane (22S)	32S hopane
R	17 α (H),21 β (H)-bishomohopane (22R)	32R hopane
S	17 α (H),21 β (H)-trishomohopane (22S)	33S hopane
T	17 α (H),21 β (H)-trishomohopane (22R)	33R hopane
U	17 α (H),21 β (H)-tetrakishomohopane (22S)	34S hopane
V	17 α (H),21 β (H)-tetrakishomohopane (22R)	34R hopane
W	17 α (H),21 β (H)-pentakishomohopane (22S)	35S hopane
X	17 α (H),21 β (H)-pentakishomohopane (22R)	35R hopane

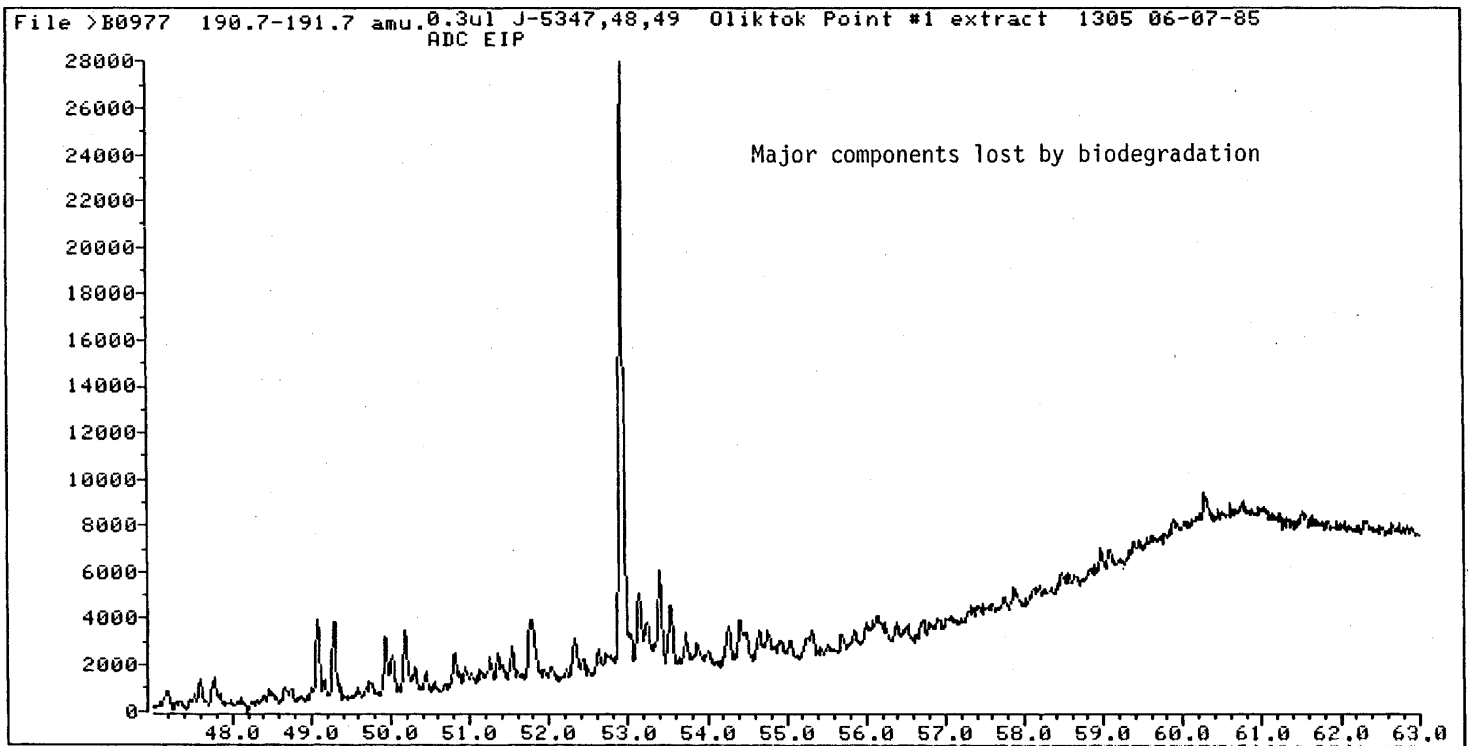
M/Z 217, Steranes

<u>Peak</u>	<u>Compound</u>	<u>Abbreviation</u>
1	5 α (H)-pregnane	21 sterane
2	5 α (H)-bisnorcholane	22 sterane
3	13 β (H),17 α (H)-diacholestane (20S)	27 $\beta\alpha$ S rearr.
4	13 β (H),17 α (H)-diacholestane (20R)	27 $\beta\alpha$ R rearr.
5	14 α (H),17 α (H)-cholestane (20S)	27 $\alpha\alpha$ S
6	14 β (H),17 β (H)-cholestane (20R)	27 $\beta\beta$ R
7	24-ethyl-13 β (H),17 α (H)-diacholestane (20S)	29 $\beta\alpha$ S rearr.
8	14 β (H),17 β (H)-cholestane (20S)	27 $\beta\beta$ S
9	14 α (H),17 α (H)-cholestane (20R)	27 $\alpha\alpha$ R
10	24-ethyl-13 β (H),17 α (H)-diacholestane (20R)	29 $\beta\alpha$ R rearr.
11	24-methyl-14 α (H),17 α (H)-cholestane (20S)	28 $\alpha\alpha$ S
12	24-methyl-14 β (H),17 α (H)-cholestane (20R)	28 $\beta\beta$ R
13	24-methyl-14 β (H),17 α (H)-cholestane (20S)	28 $\beta\beta$ S
14	24-methyl-14 α (H),17 α (H)-cholestane (20R)	28 $\alpha\alpha$ R
15	24-ethyl-14 α (H),17 α (H)-cholestane (20S)	29 $\alpha\alpha$ S
16	24-ethyl-14 β (H),17 β (H)-cholestane (20R)	29 $\beta\beta$ R
17	24-ethyl-14 β (H),17 β (H)-cholestane (20S)	29 $\beta\beta$ S
18	24-ethyl-14 α (H),17 α (H)-cholestane (20R)	29 $\alpha\alpha$ R

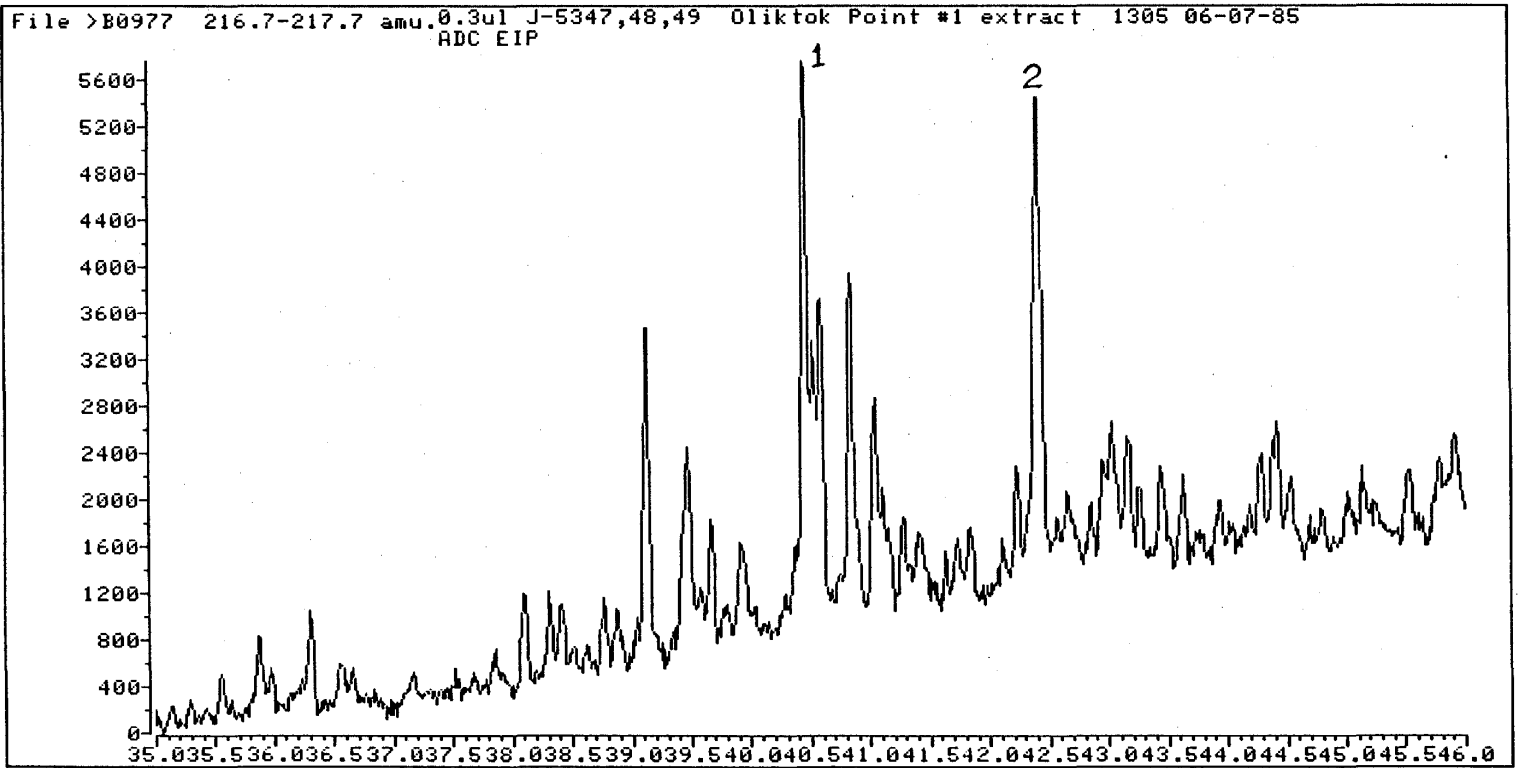
ARCO Olightok Pt. No. 1
3022'-3036'



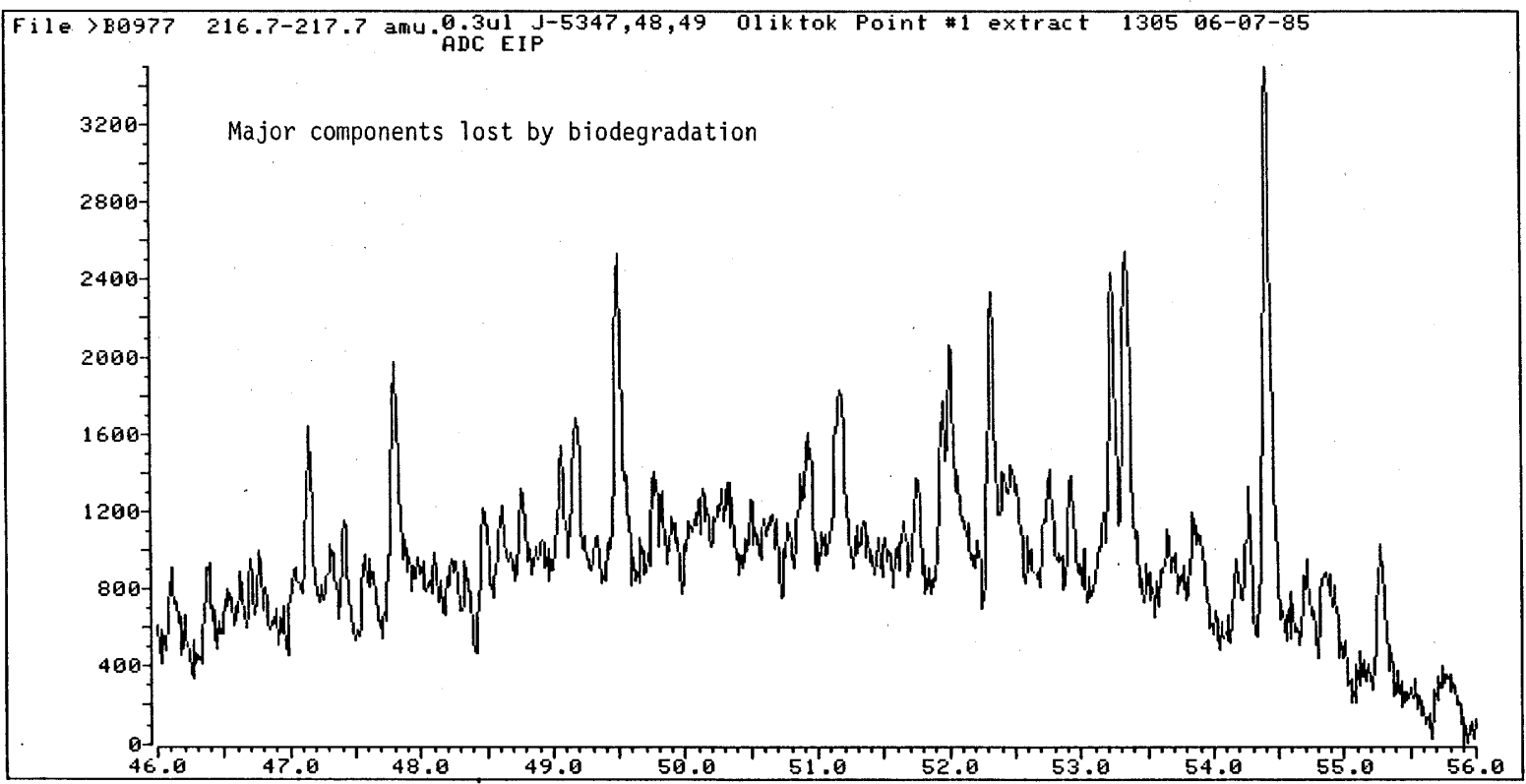
ARC O1iktok Pt. 1
3022'-3036'



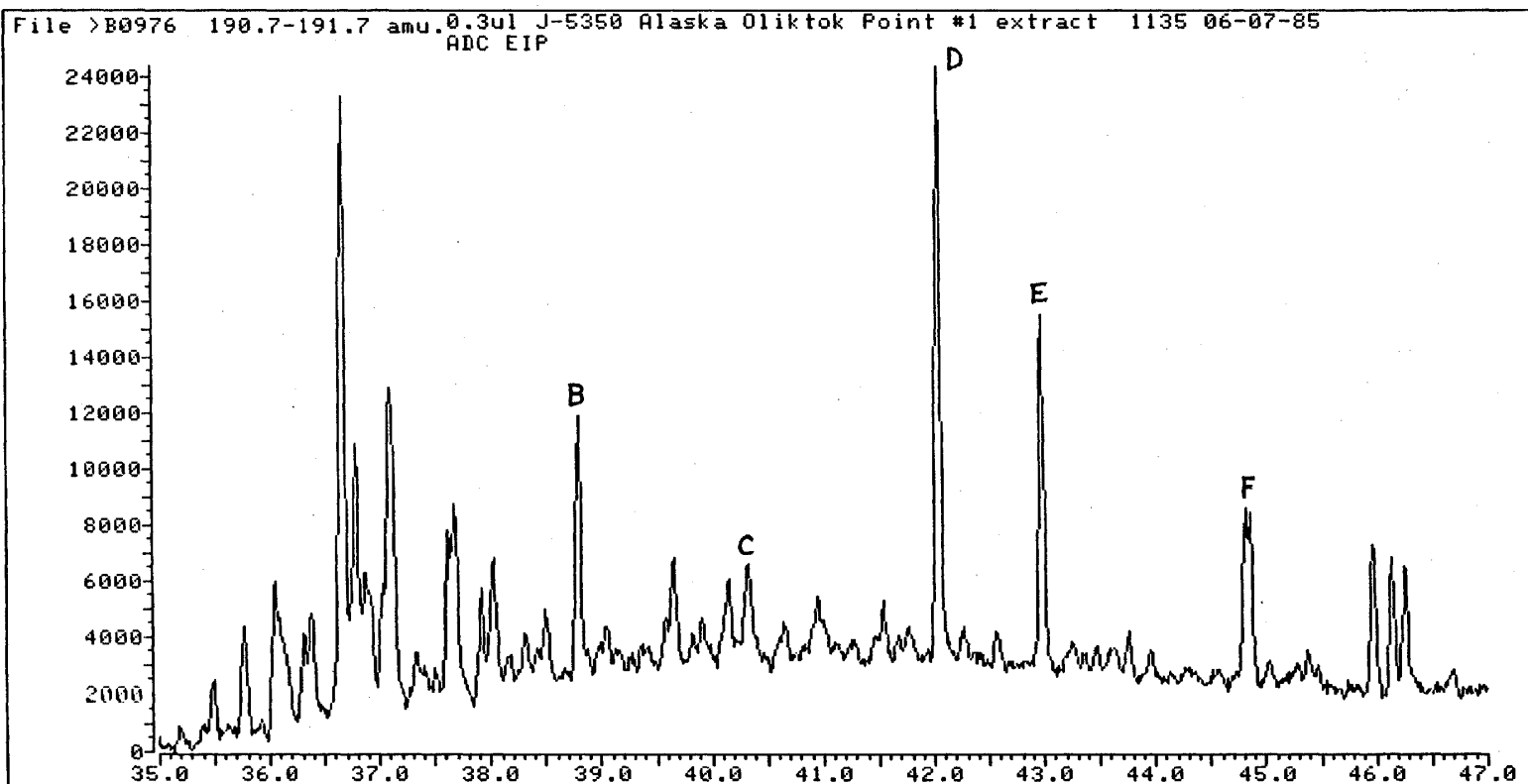
ARCO Oliktok Pt. No. 1
3022'-3036'



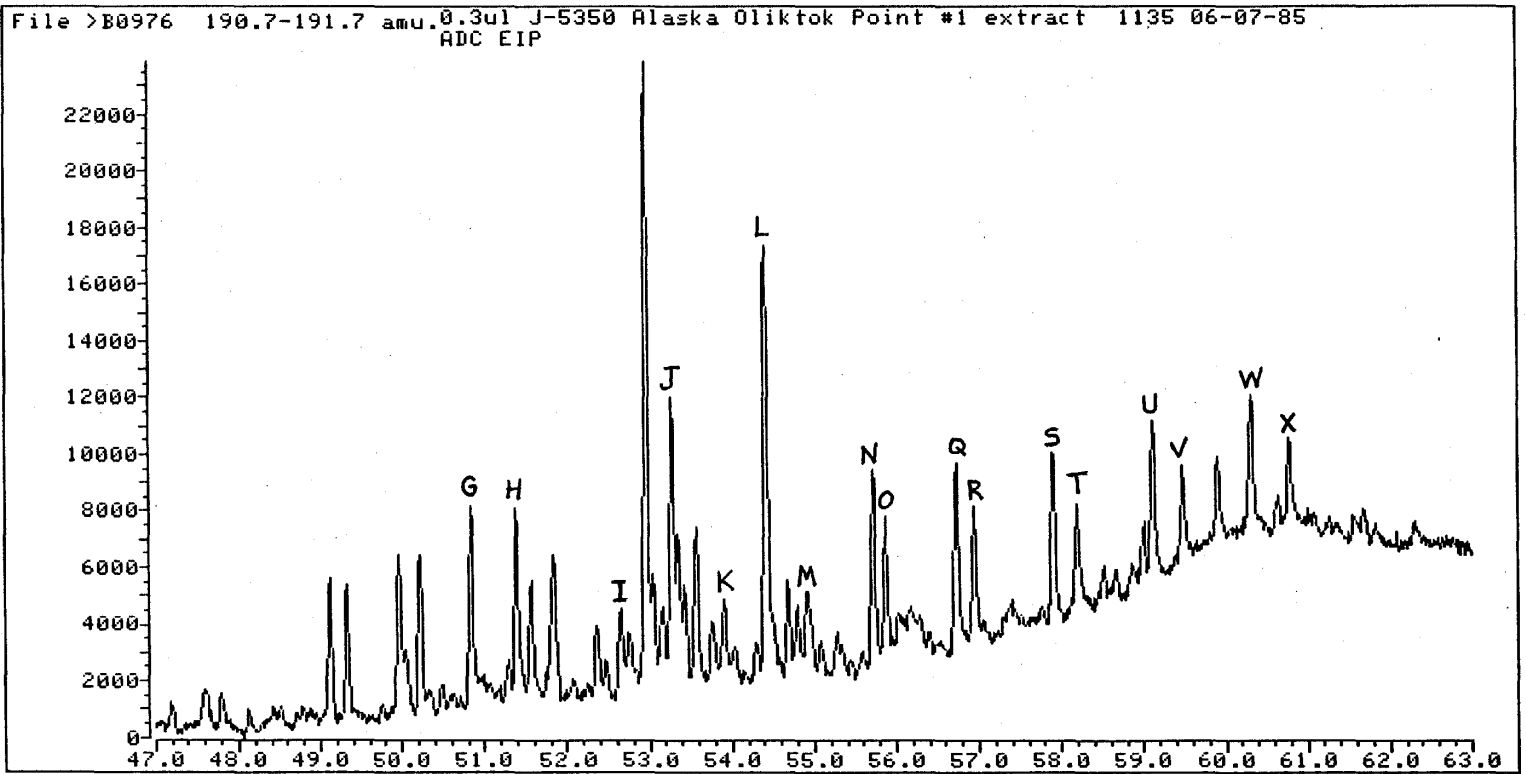
11/2 217
ARCO Oliktok Pt. No. 1
3022'-3036'



ARCO Oliktok Pt. No. 1
3453'

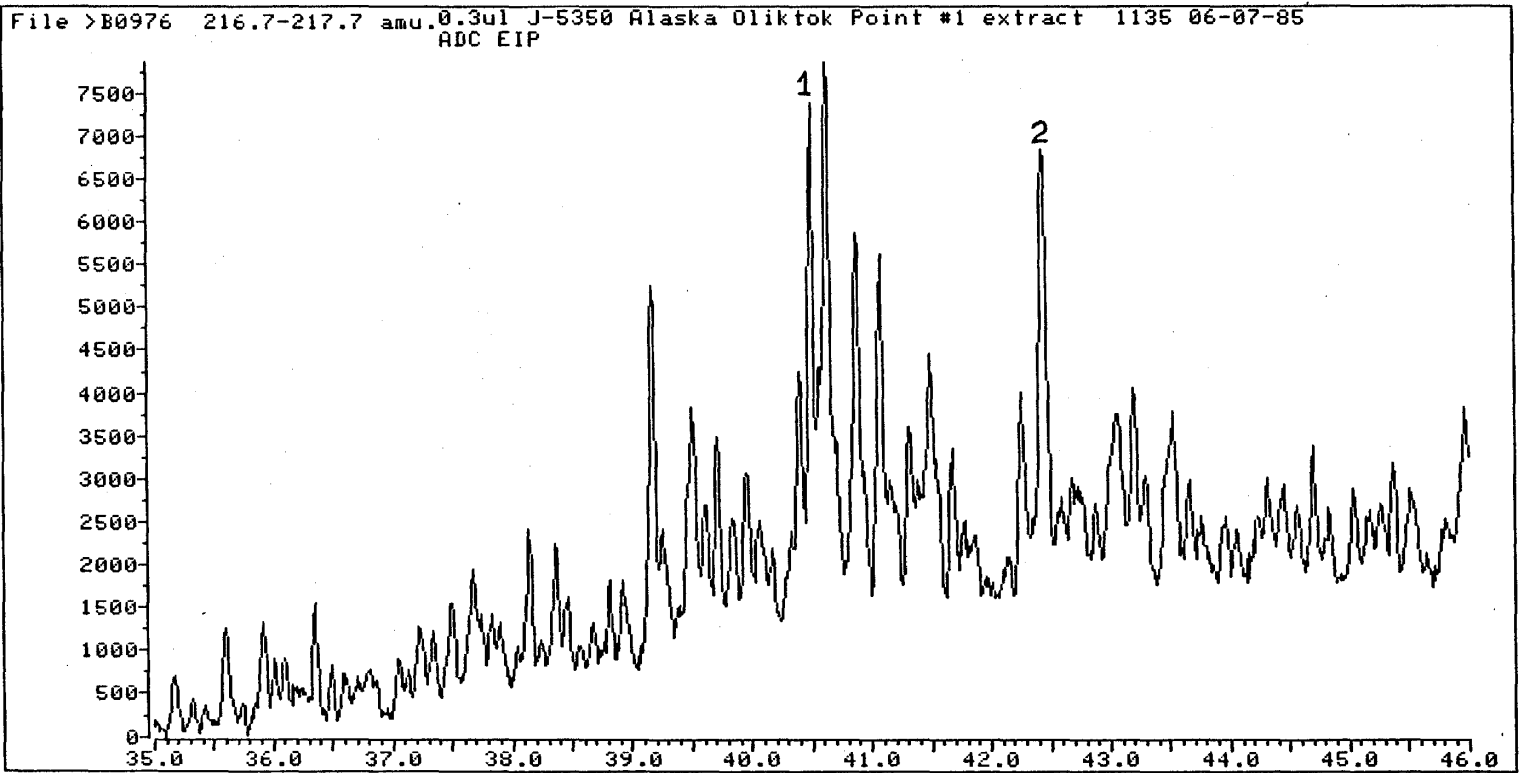


ARCO Oliktok Pt. No. 1
3453'

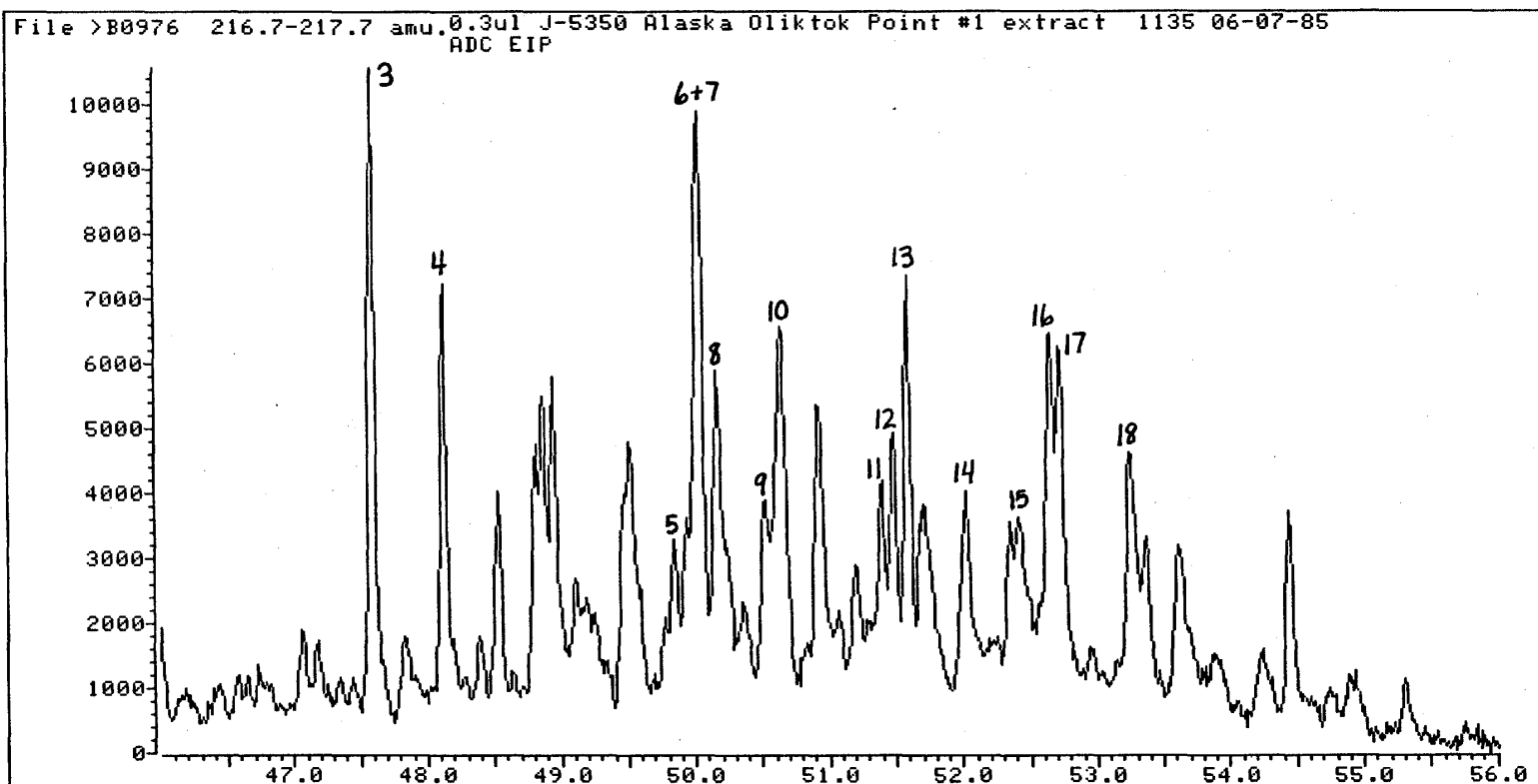


ARCO Oliktok Pt. No. 1
3453'

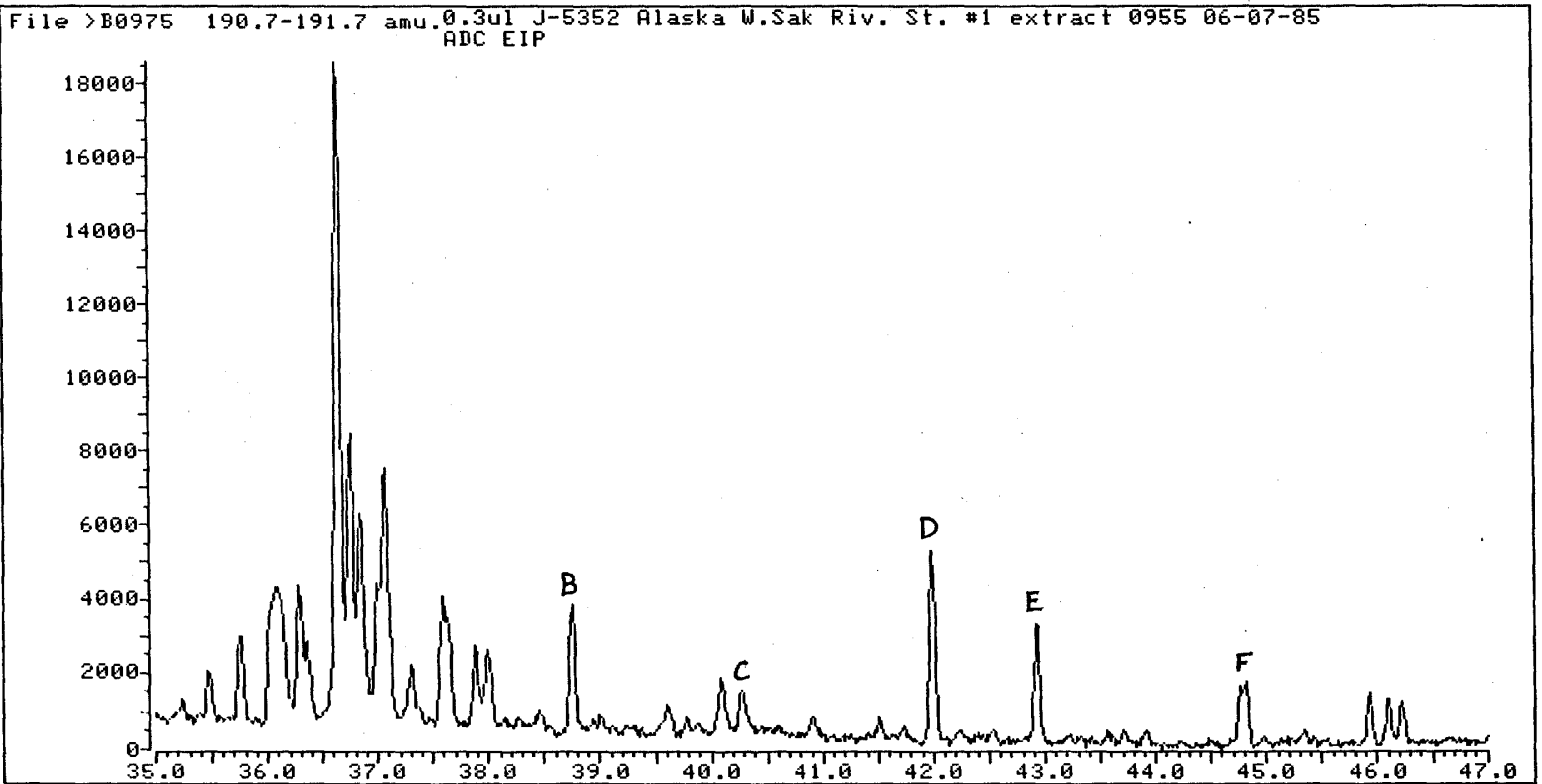
File >B0976 216.7-217.7 amu.0.3ul J-5350 Alaska Oliktok Point #1 extract 1135 06-07-85
ADC EIP



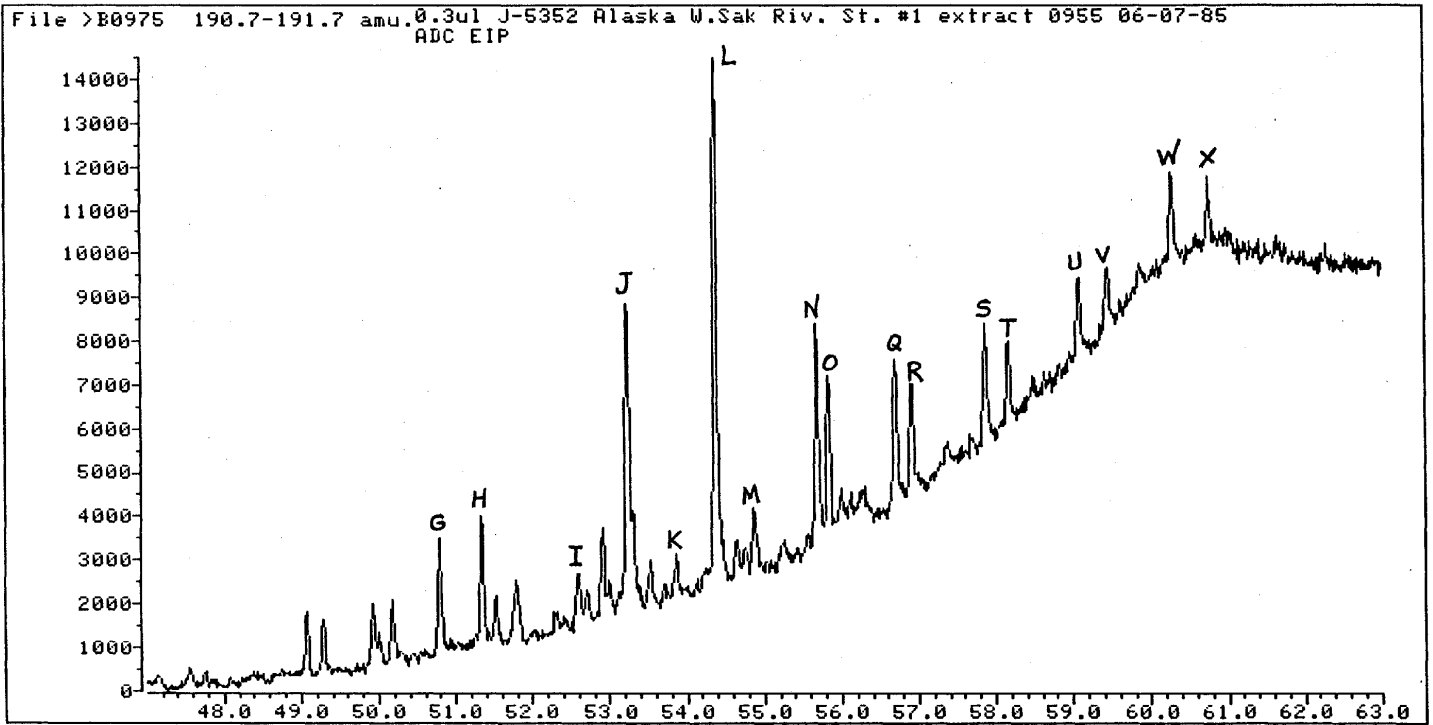
ARCO Oliktok Pt. No. 1
3453'



ARCO W. Sak Riv. St. NO. 1
4140'-4150'

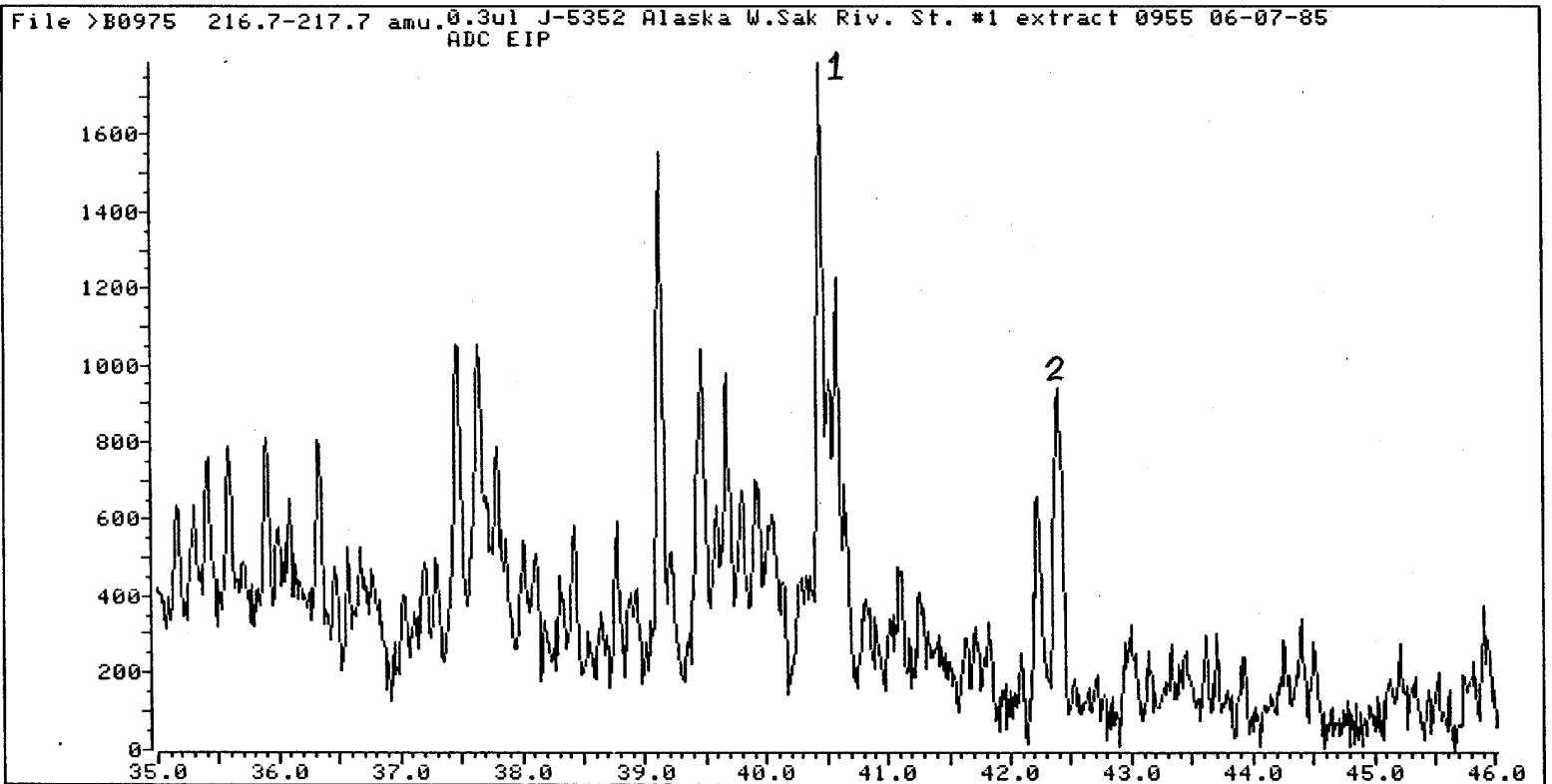


ARCO W. Sak Riv. St. No. 1
4140'-4150'

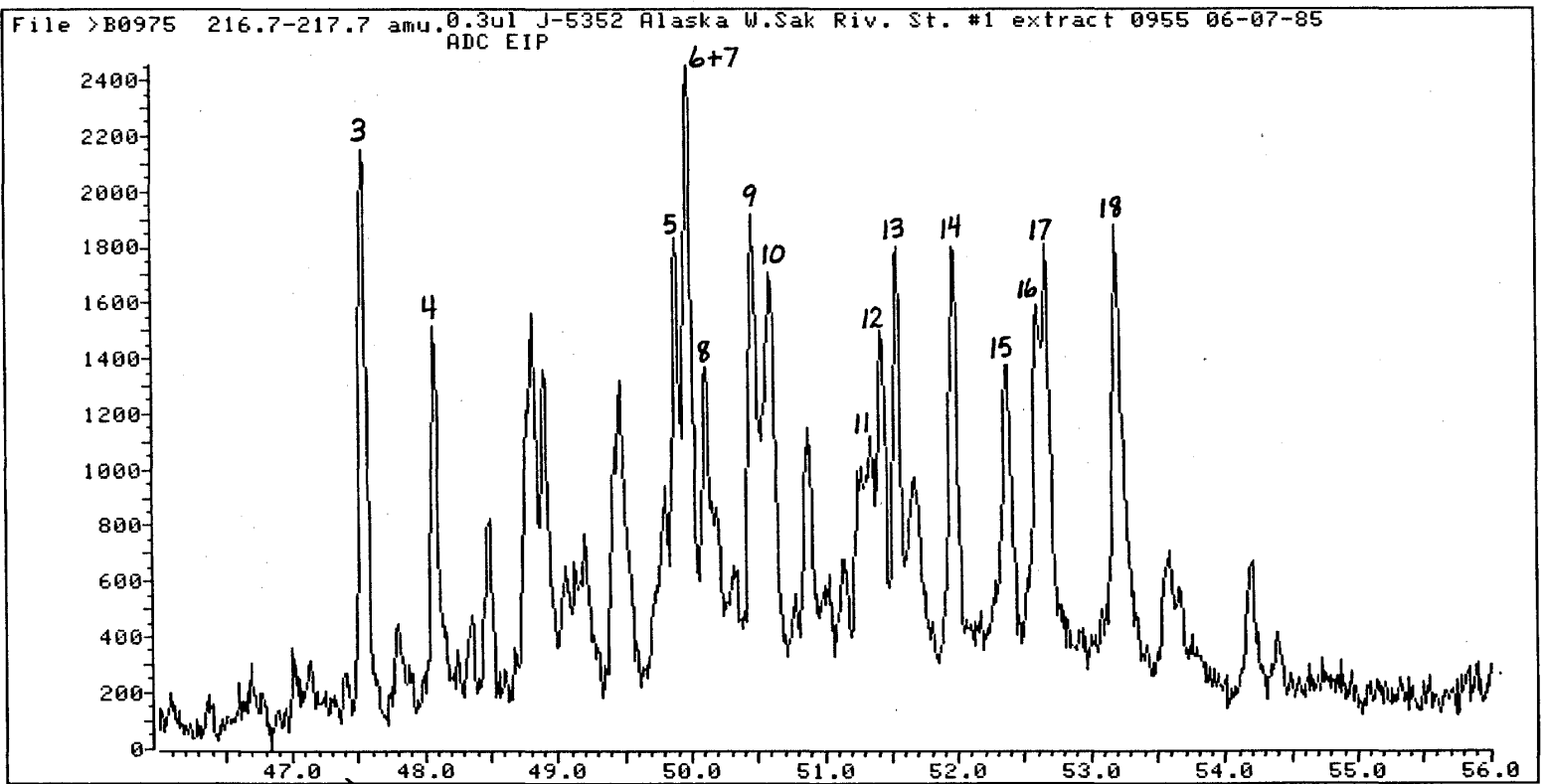


ARCO W. Sak Riv. St. No. 1
4140'-4150'

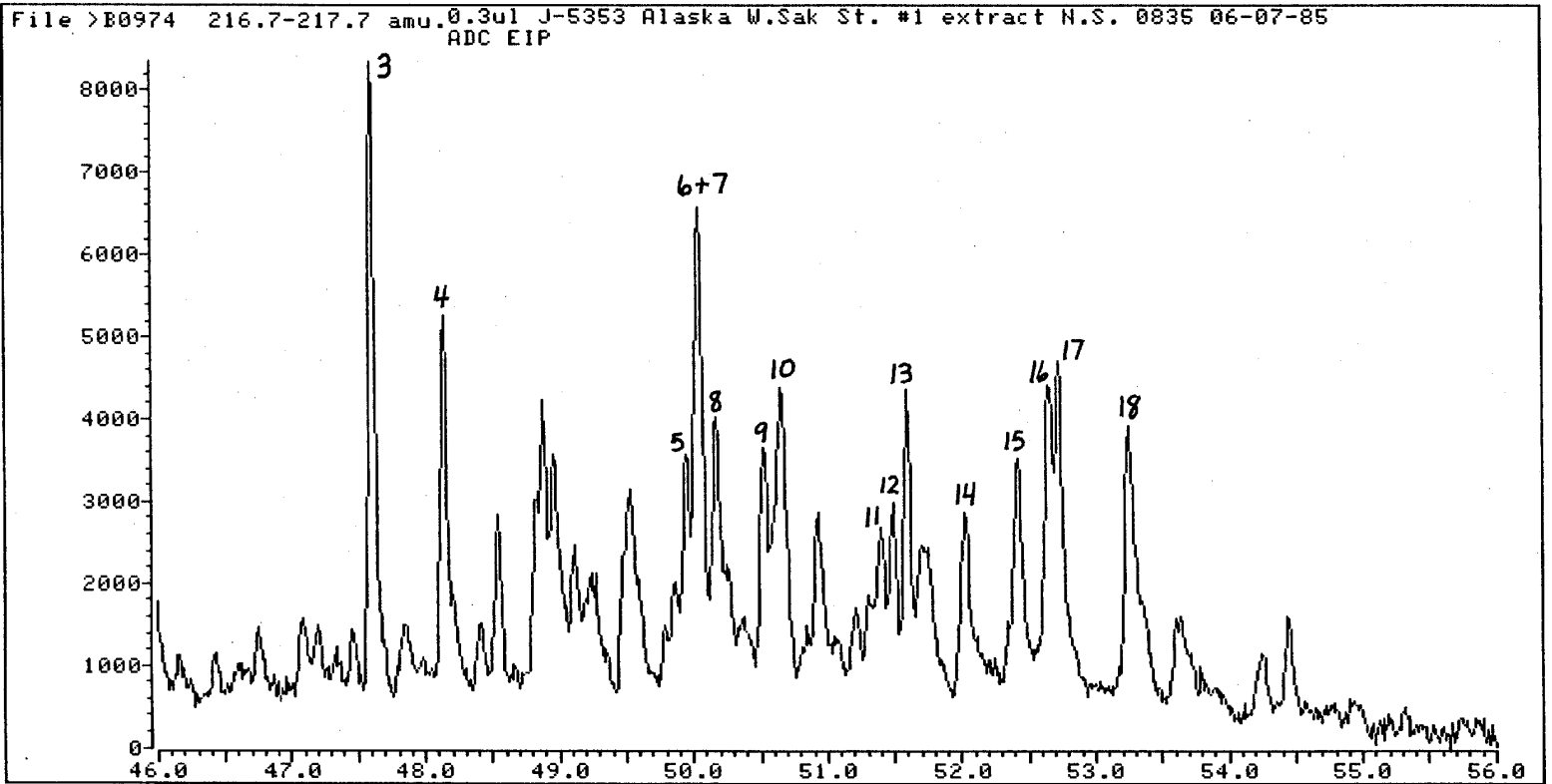
File >B0975 216.7-217.7 amu, 0.3ul J-5352 Alaska W.Sak Riv. St. #1 extract 0955 06-07-85
ADC EIP



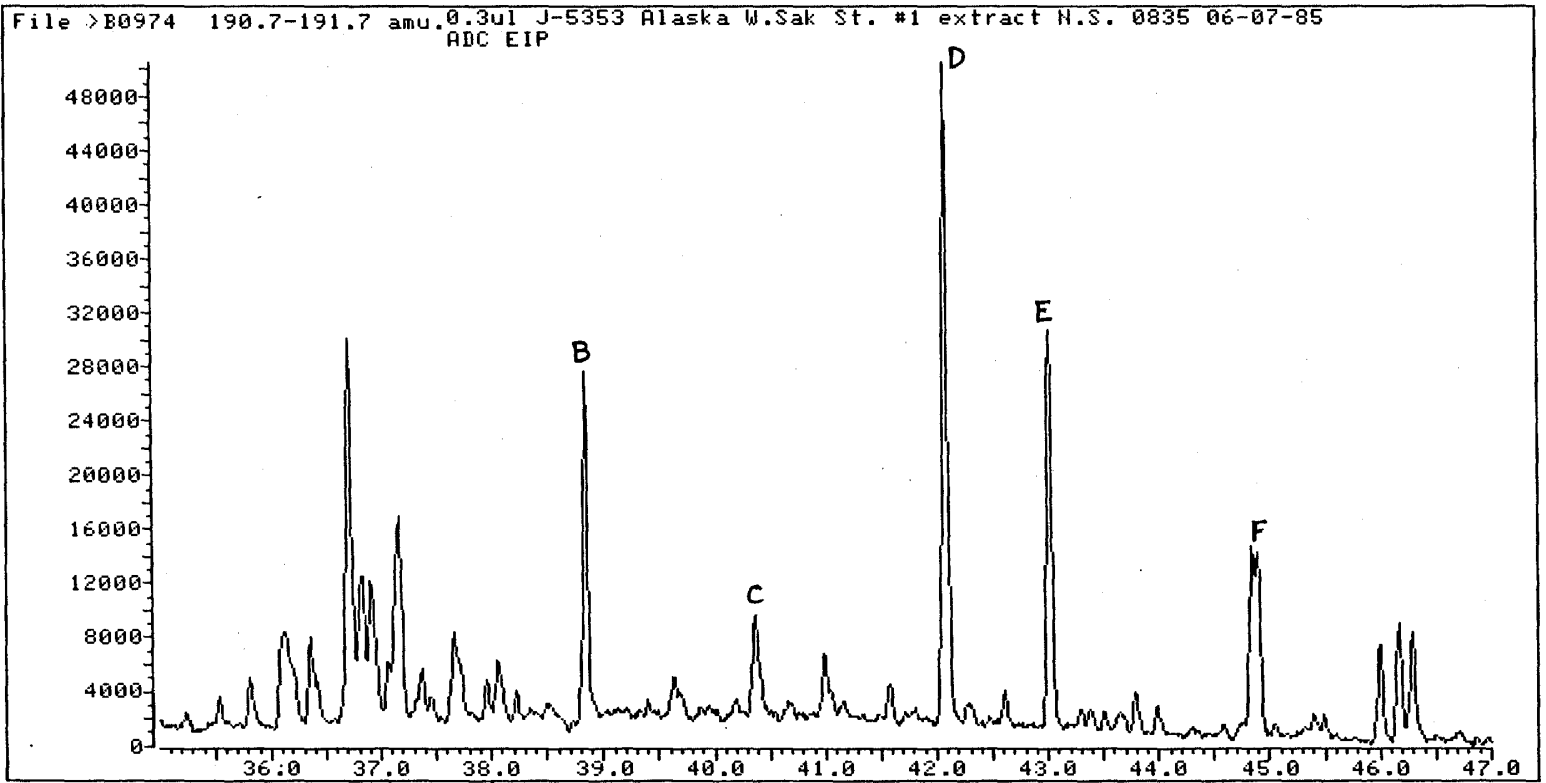
ARCO W. Sak Riv. St. No. 1
4140'-4150'



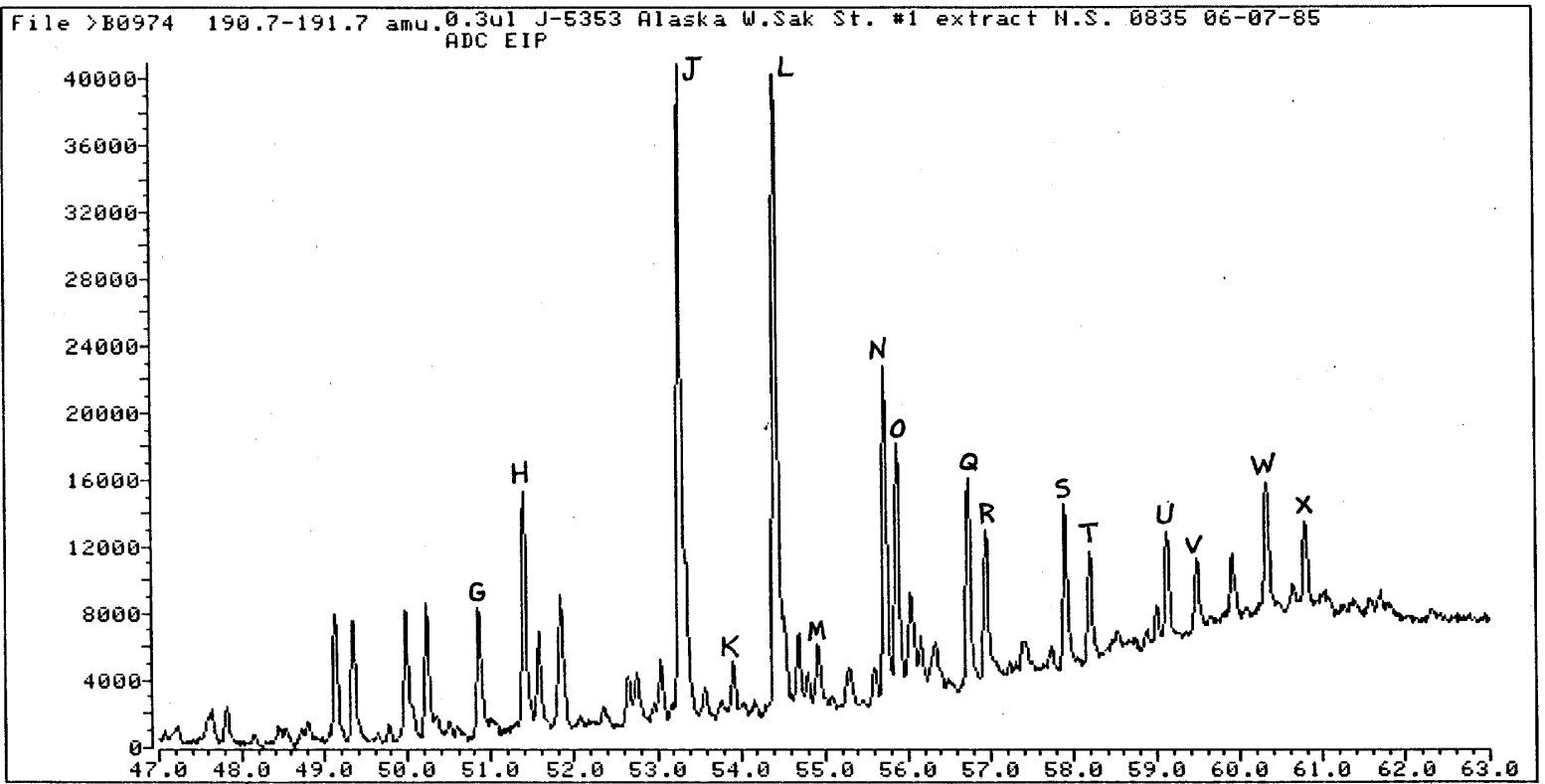
ARCO W. Sak Riv. St. No. 1
6530'



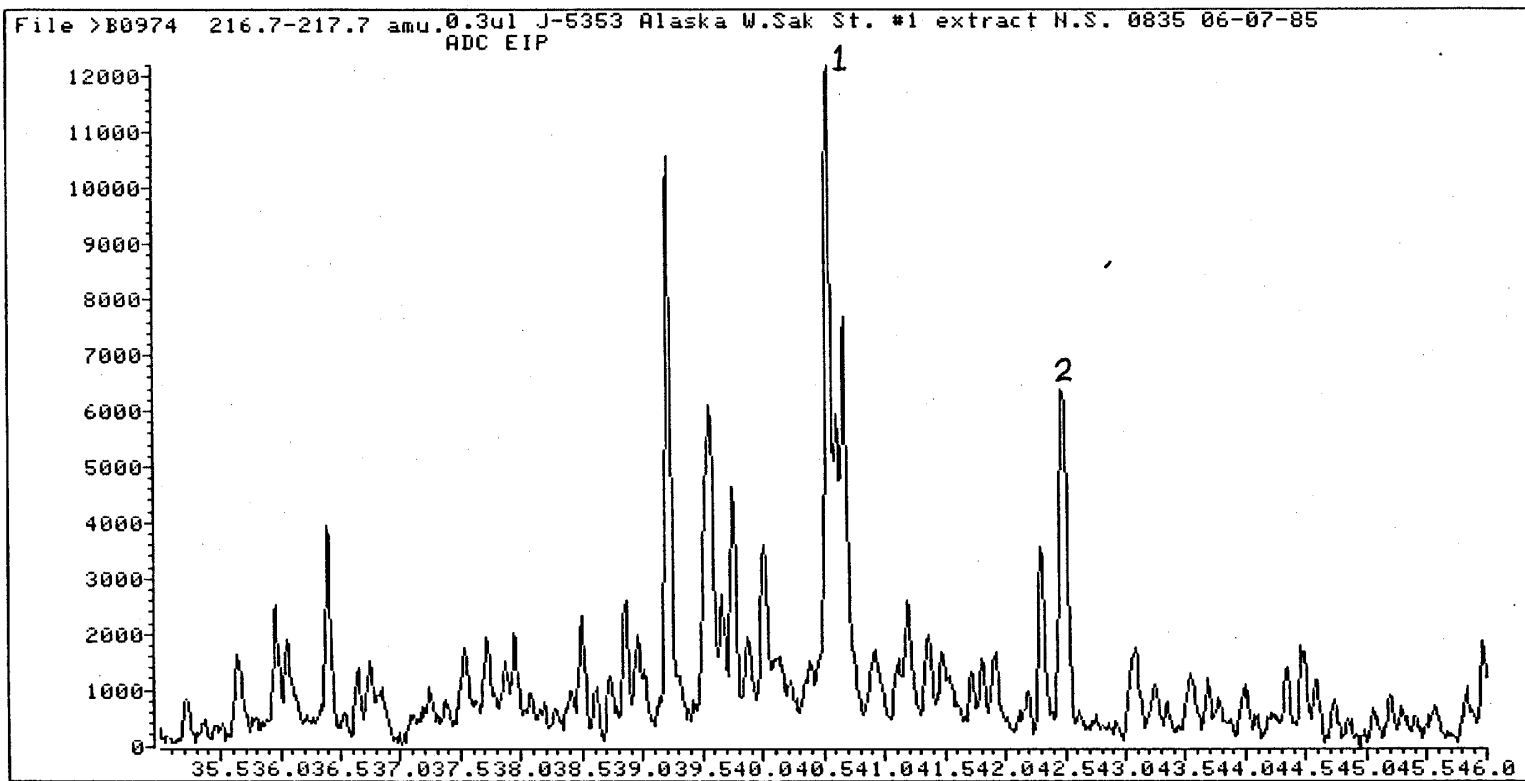
ARCO W. Sak Riv. St. No. 1
6530'



ARCO W. Sak Riv. St. No. 1
6530'

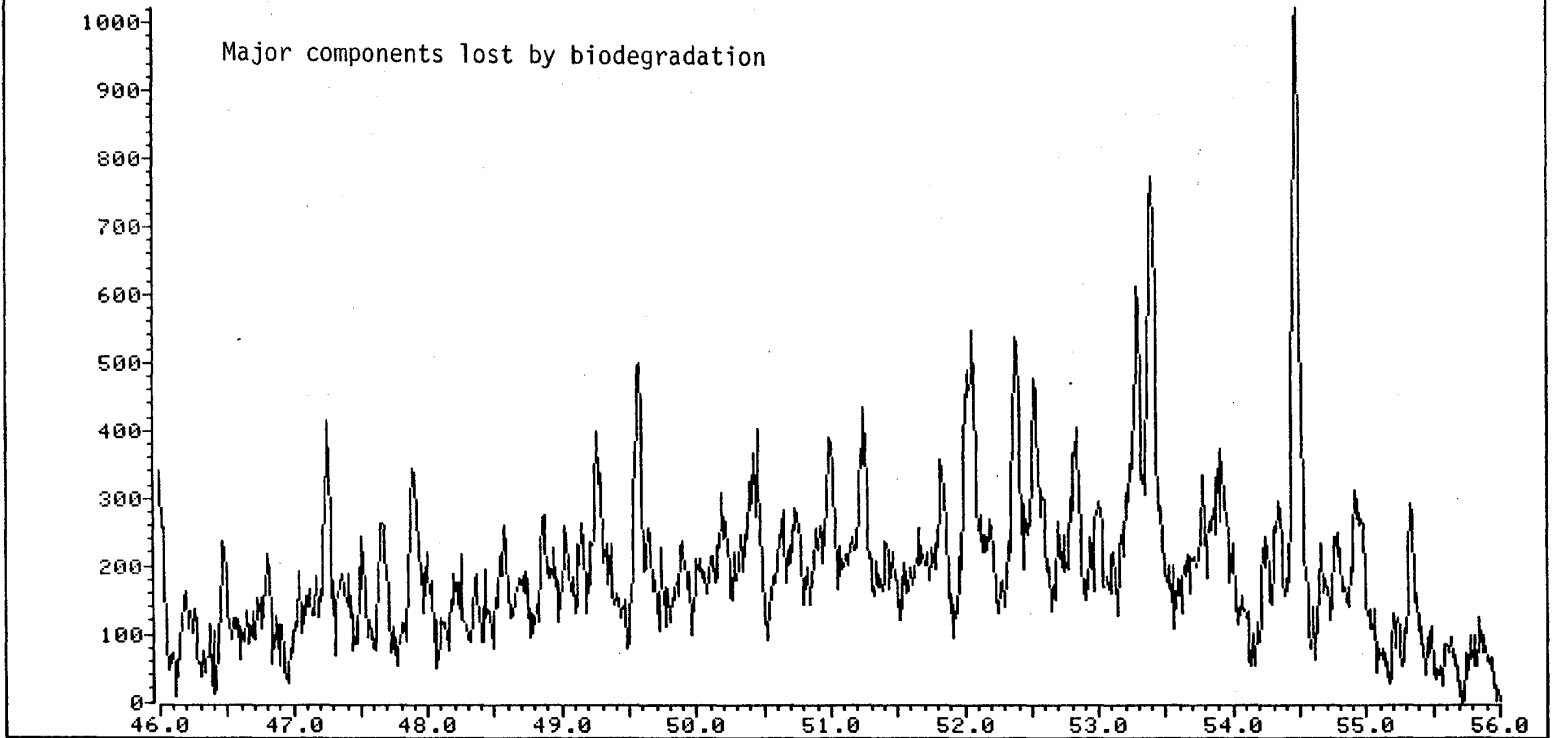


ARCO W. Sak Riv. St. No. 1
6530'

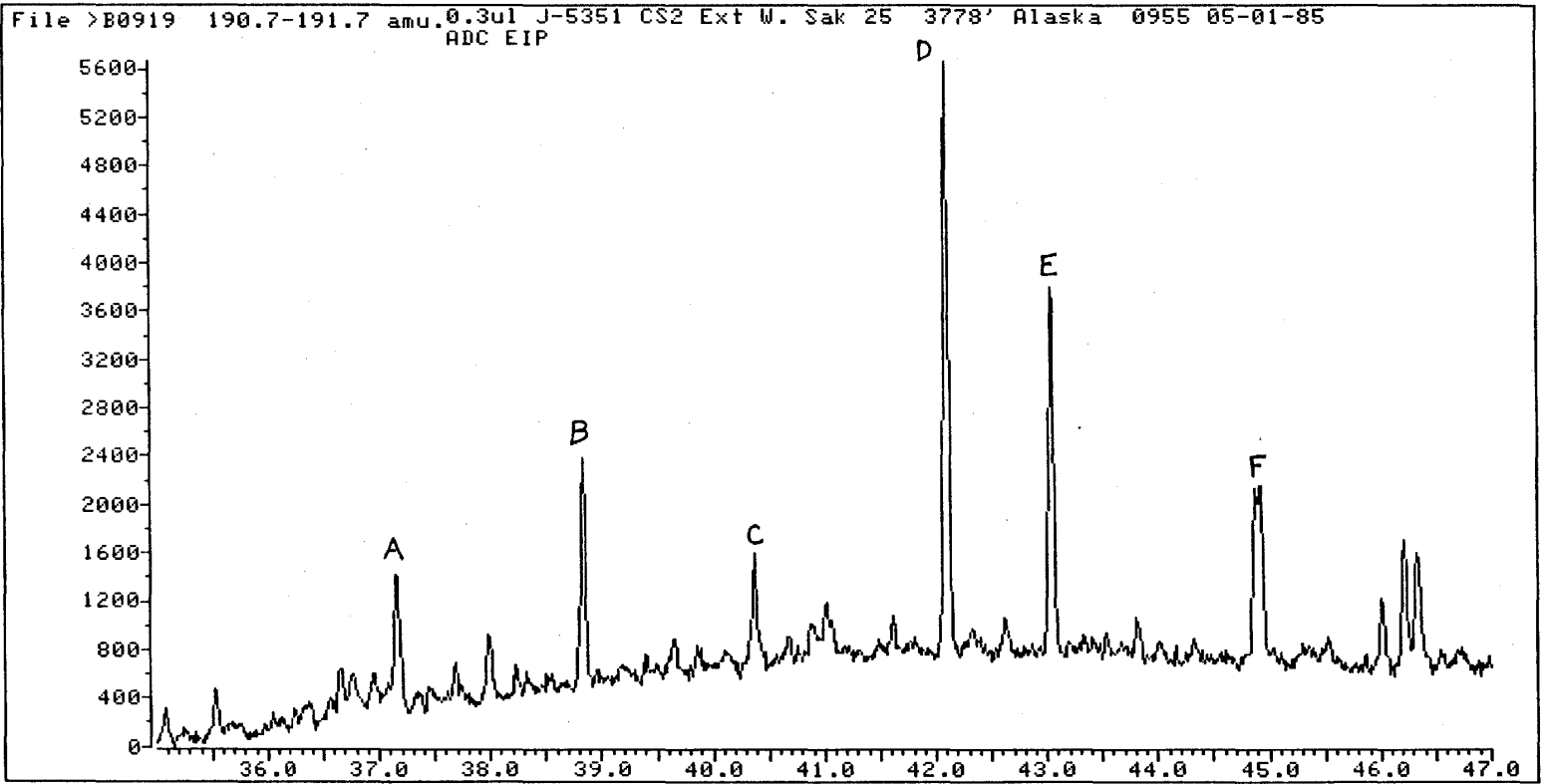


ARCO W. Sak No. 25
3778'

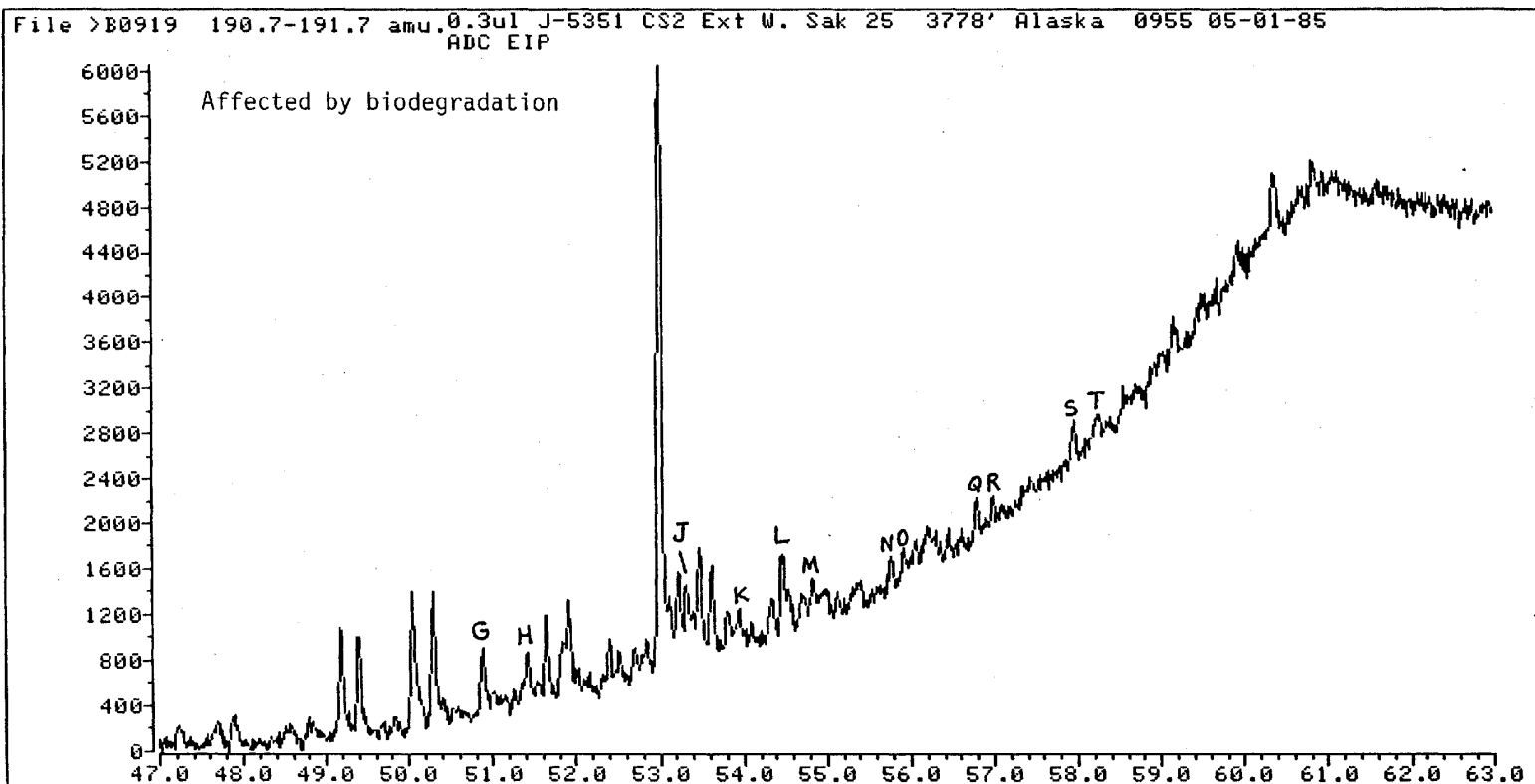
File >B0919 216.7-217.7 amu, 0.3ul J-5351 CS2 Ext W. Sak 25 3778' Alaska 0955 05-01-85
ADC EIP



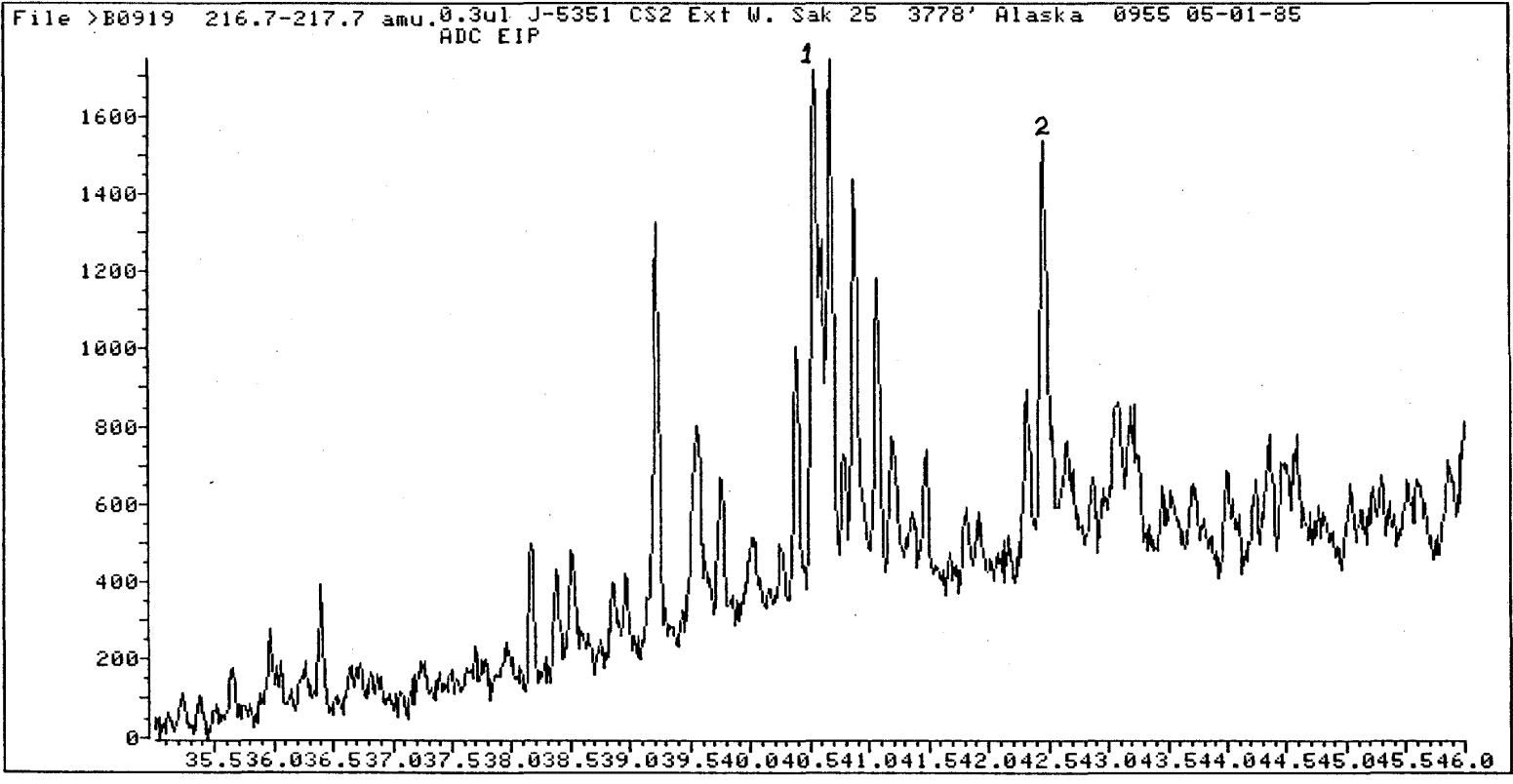
ARCO W. Sak No. 25
3778'



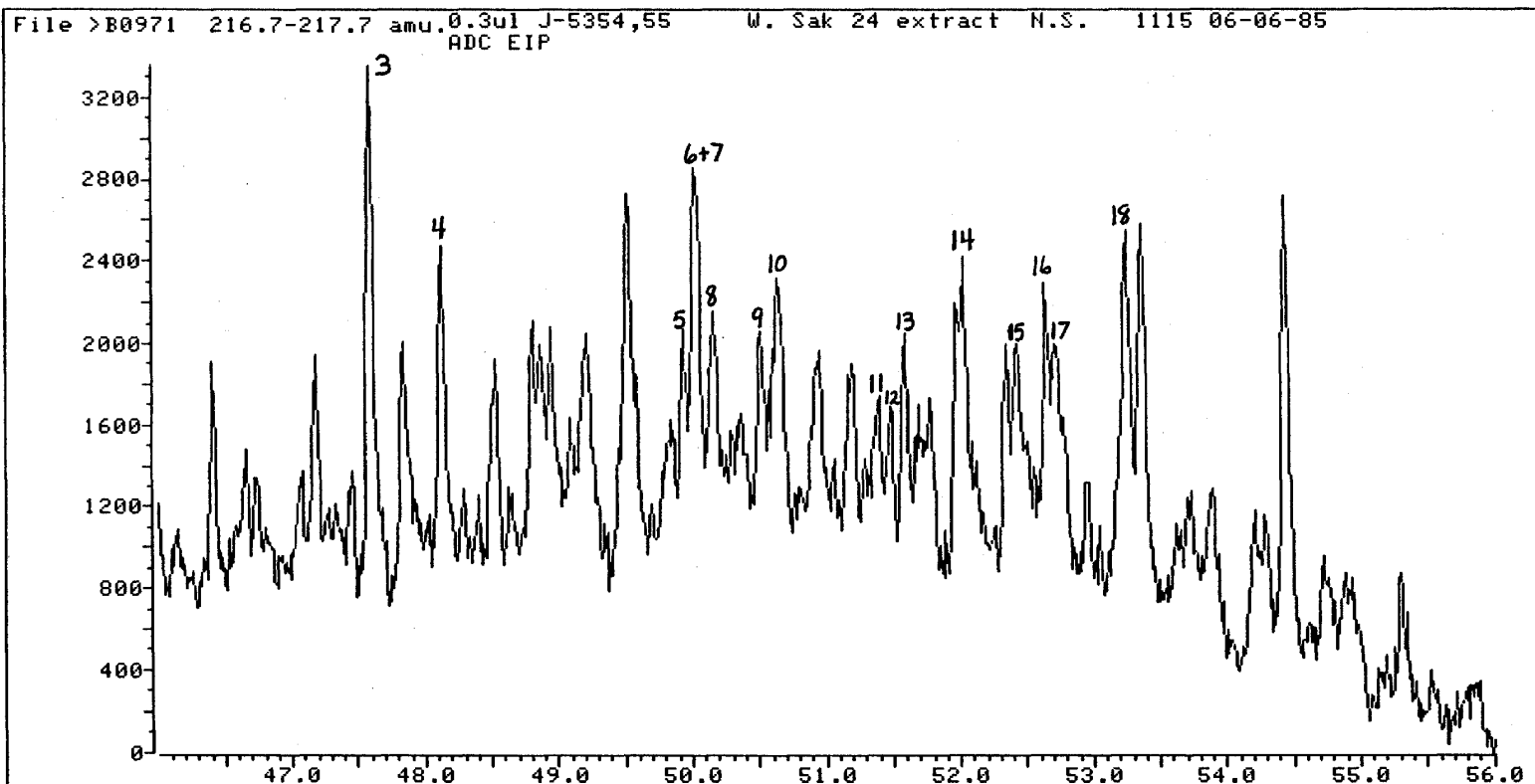
ARCO W. Sak No. 25
3778'



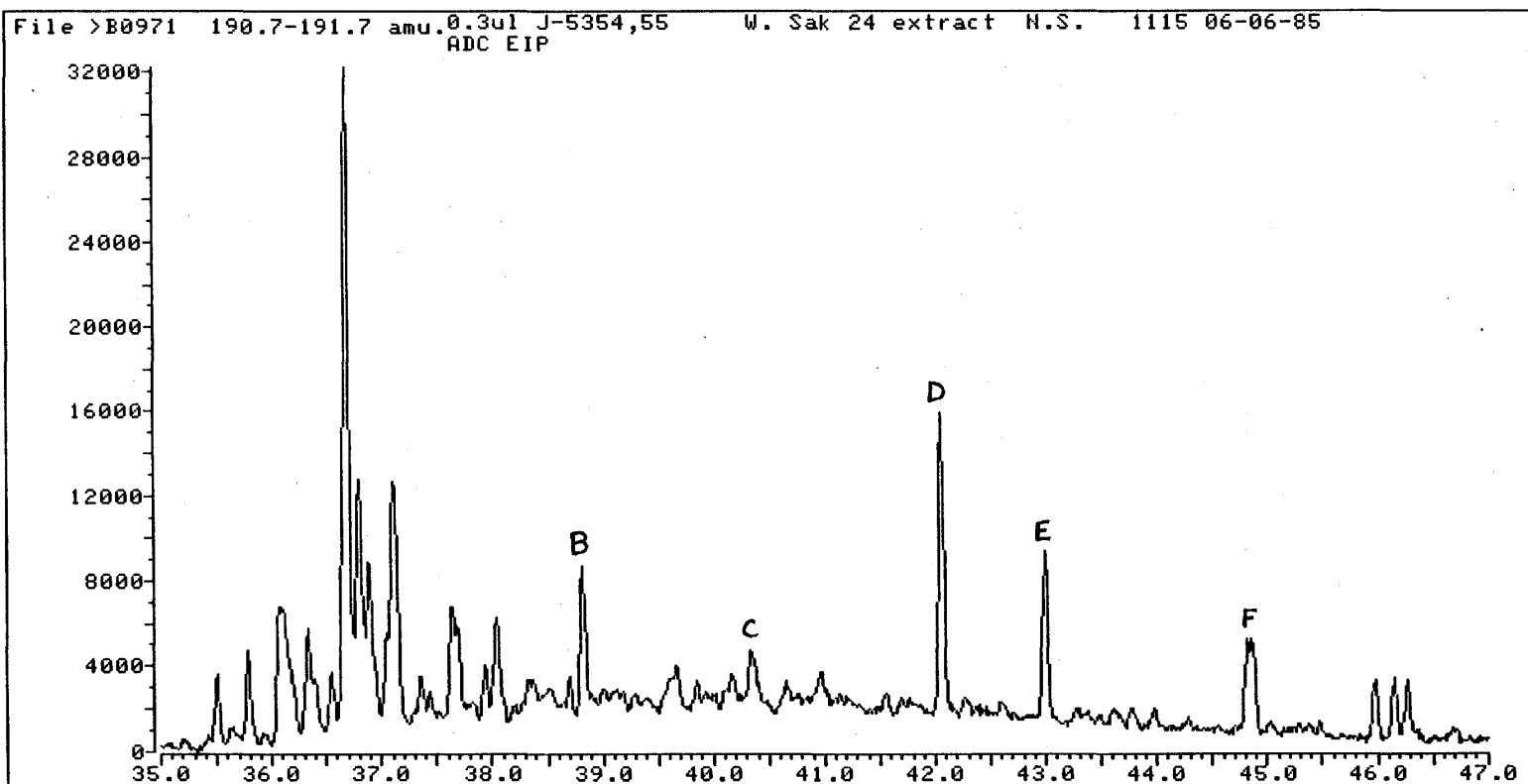
ARCO W. Sak No. 25
3778'



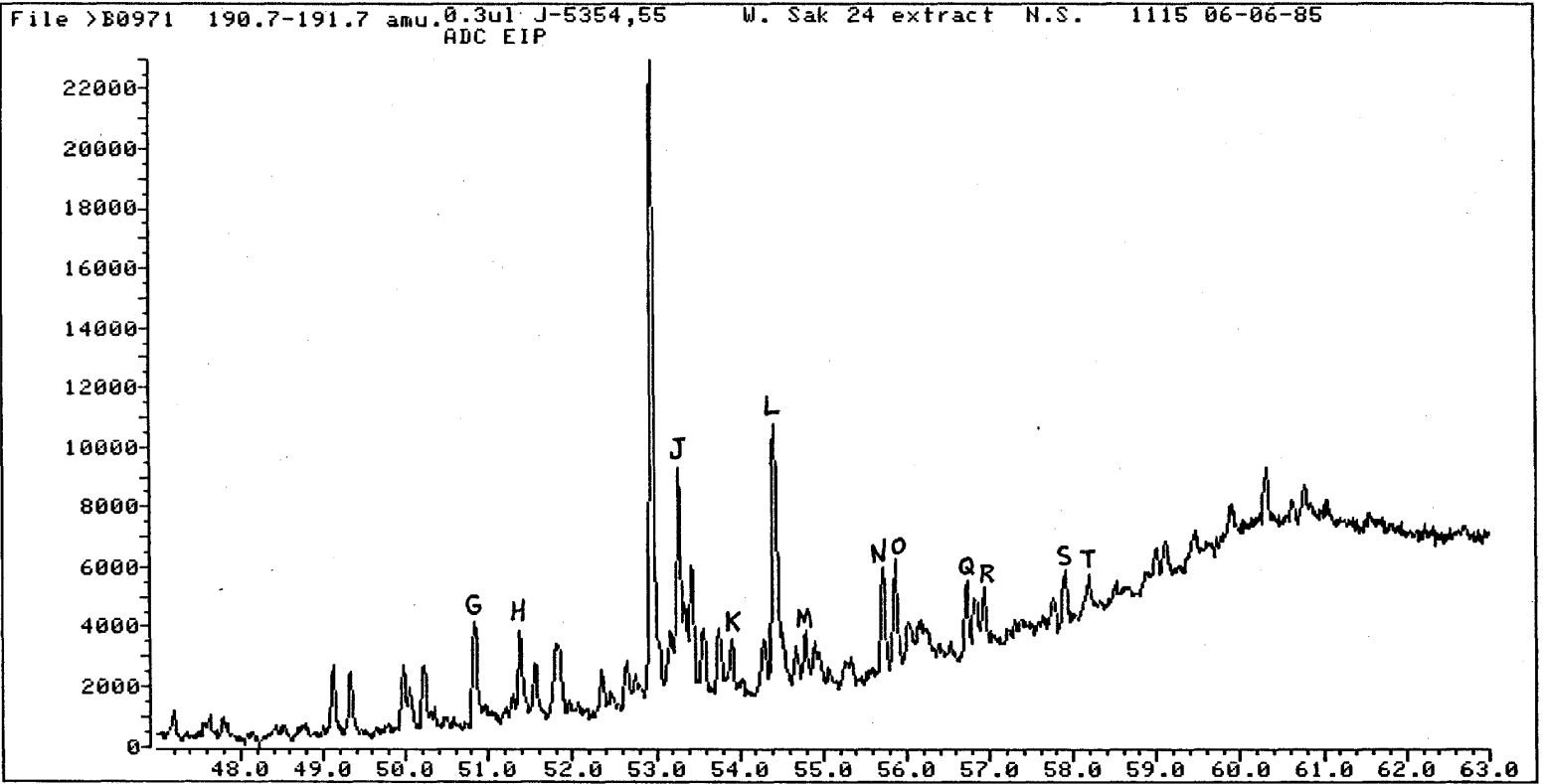
ARCO W. Sak No. 24
4350'-4440'



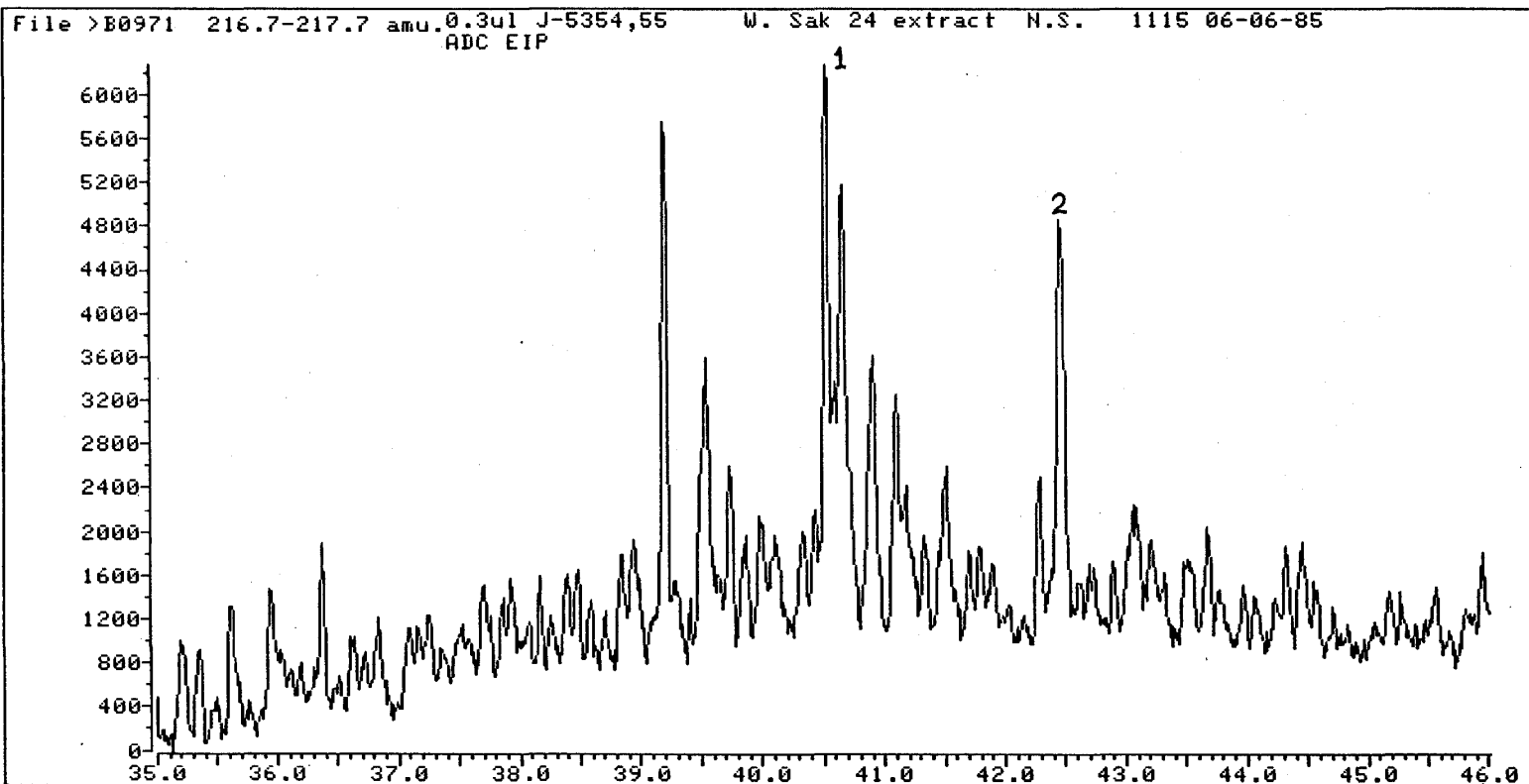
ARCO W. Sak No. 24
4350'-4440'



ARCO W. Sak No. 24
4350'-4440'

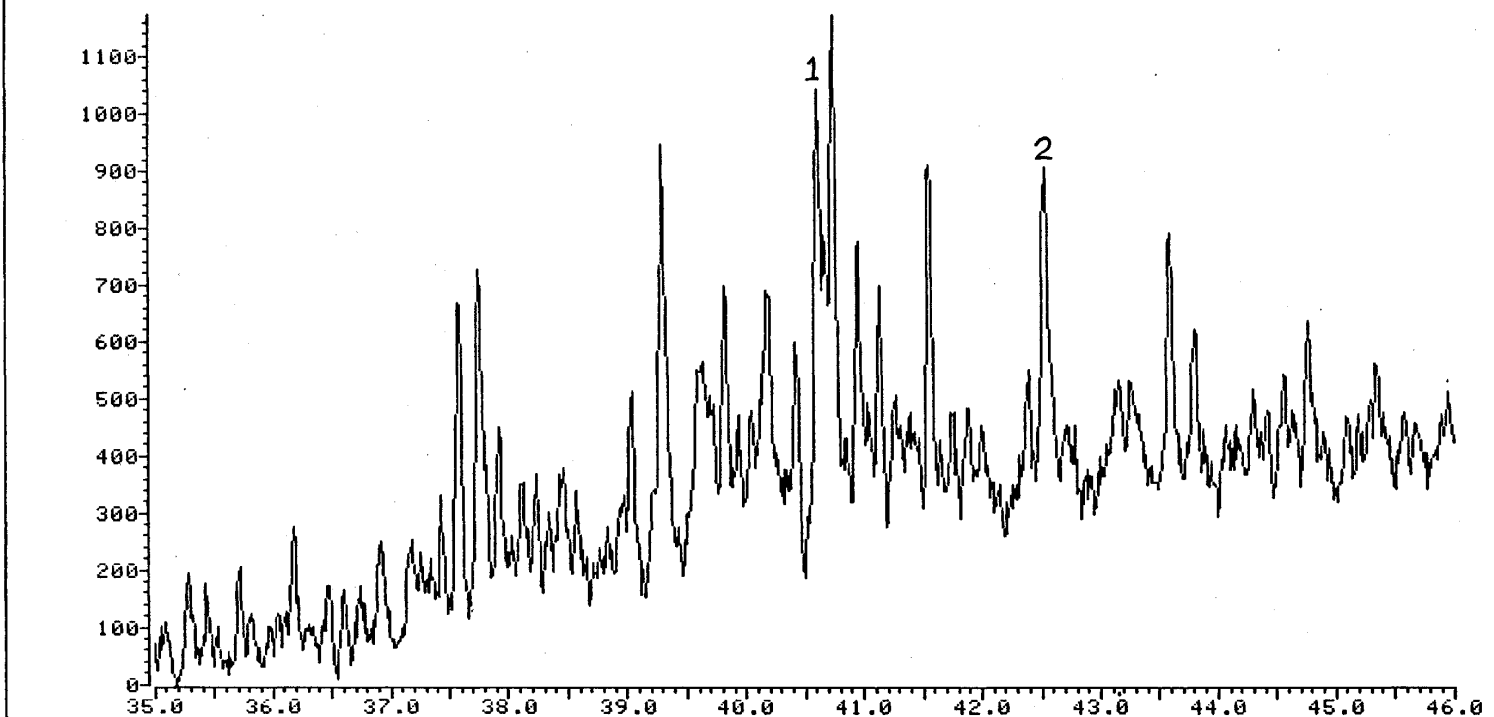


ARCO W. Sak No. 24
4350'-4440'

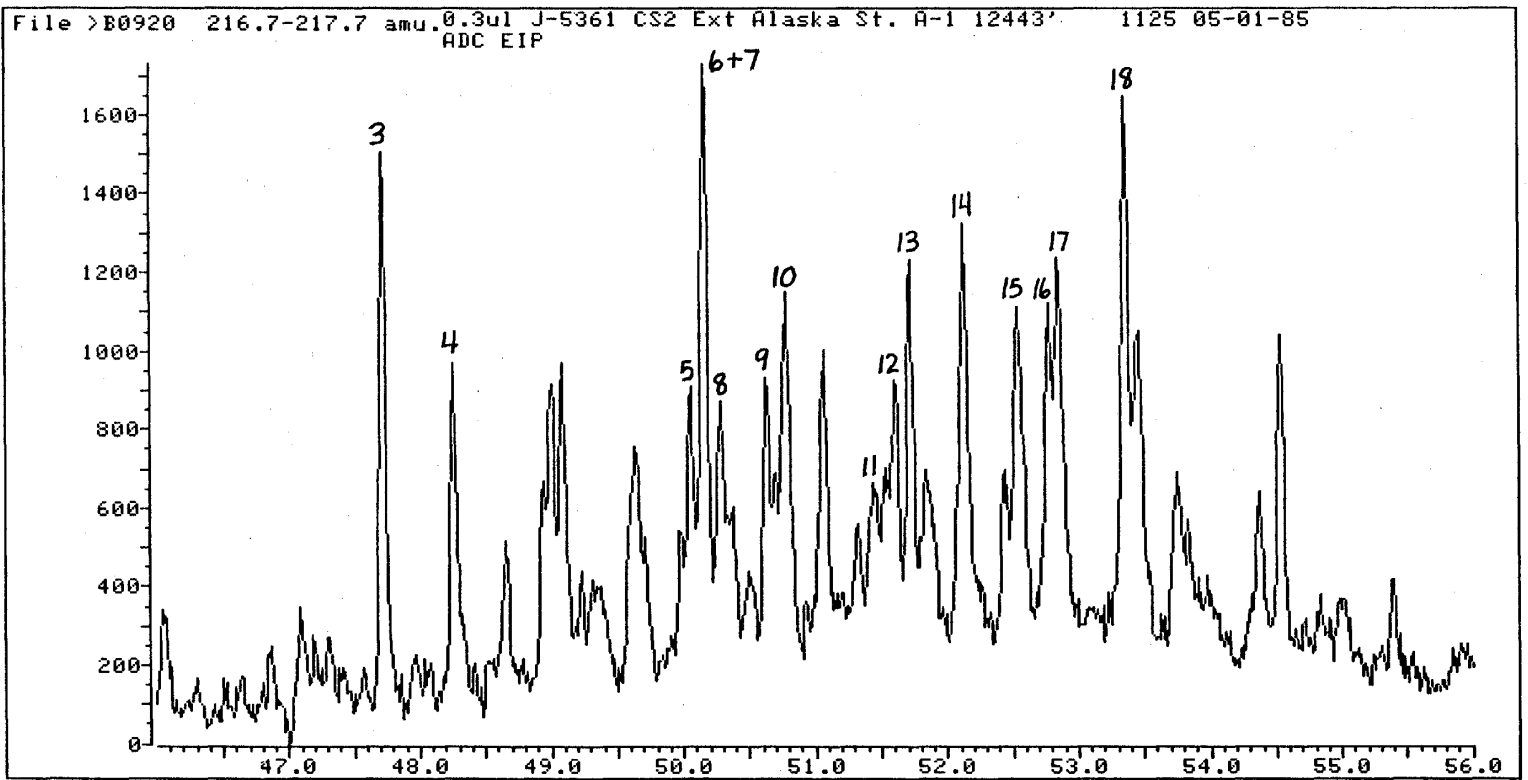


17/2 217
Exxon Alaska St. A-1
12,443'

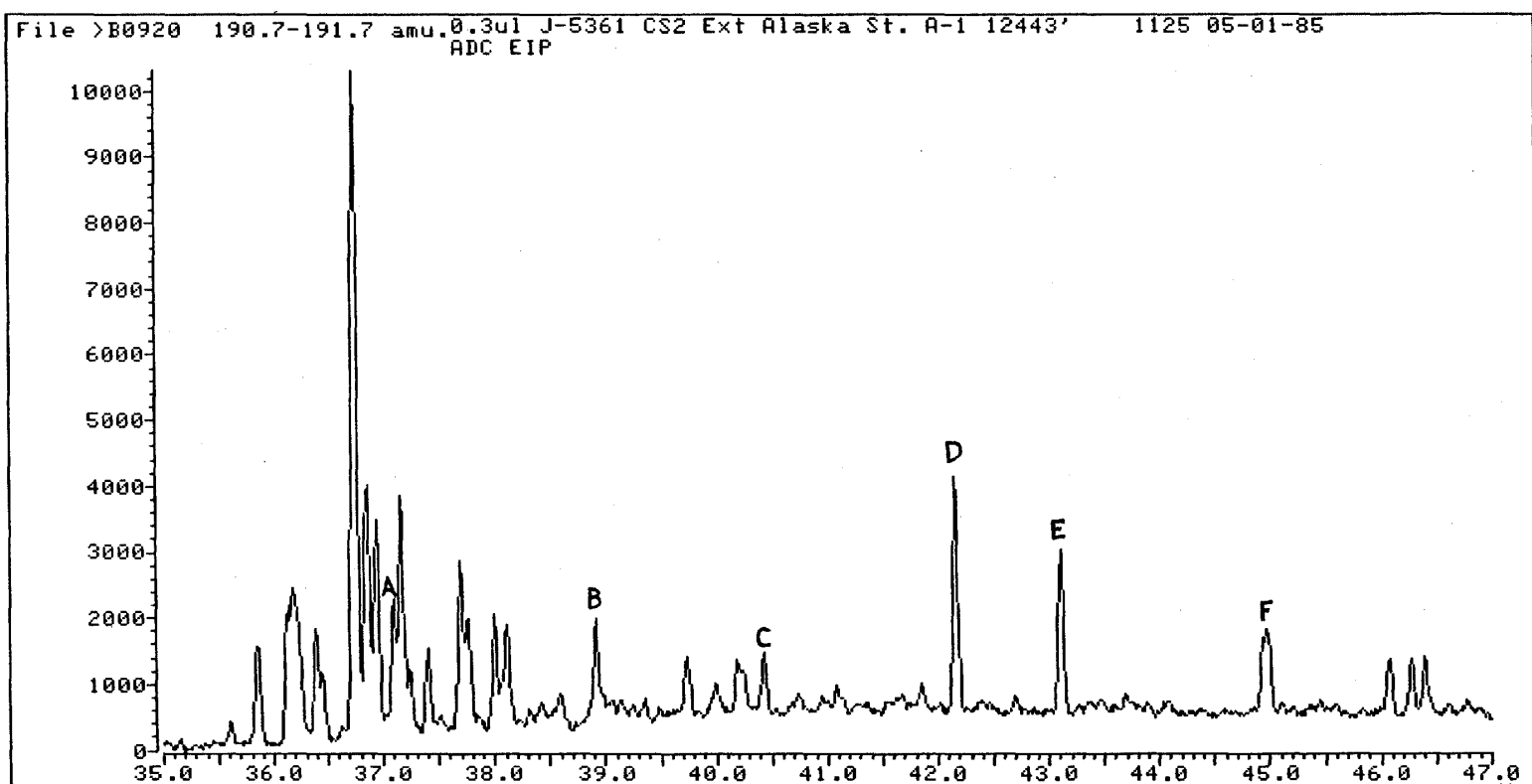
File >B0920 216.7-217.7 amu,0.3ul J-5361 CS2 Ext Alaska St. A-1 12443' 1125 05-01-85
ADC EIP



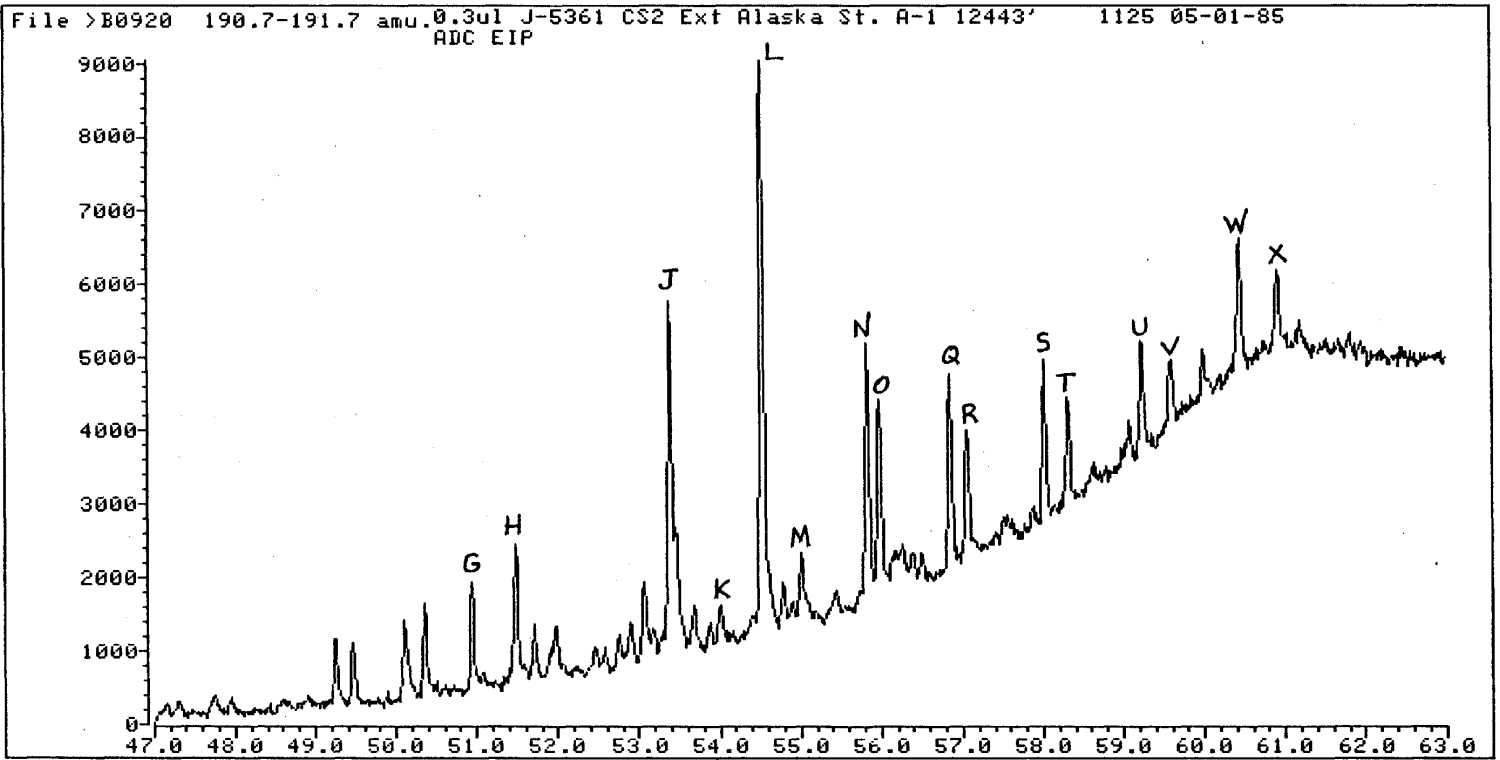
Exxon Alaska St. A-1
12,443'



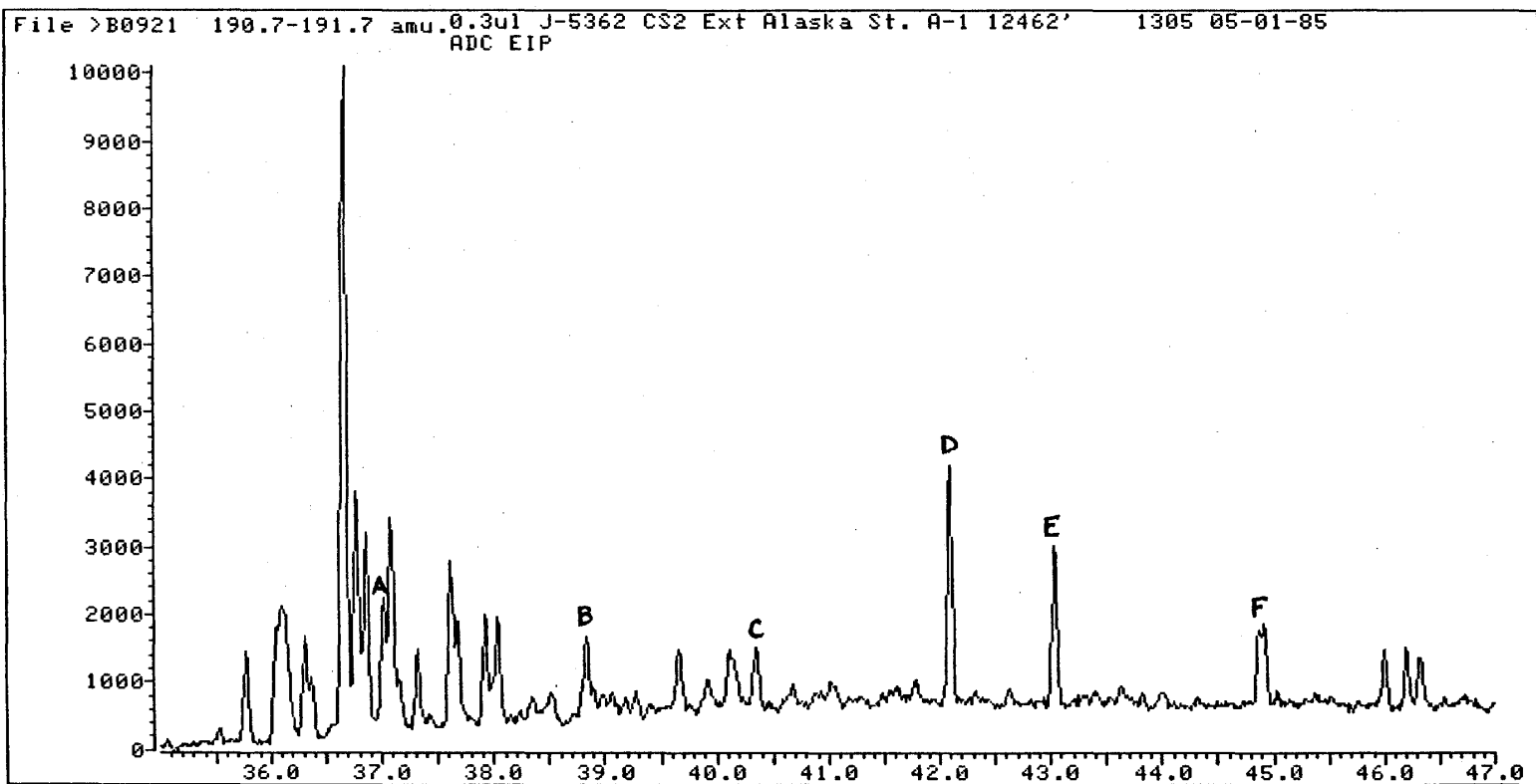
Exxon Alaska St. A-1
12,443'



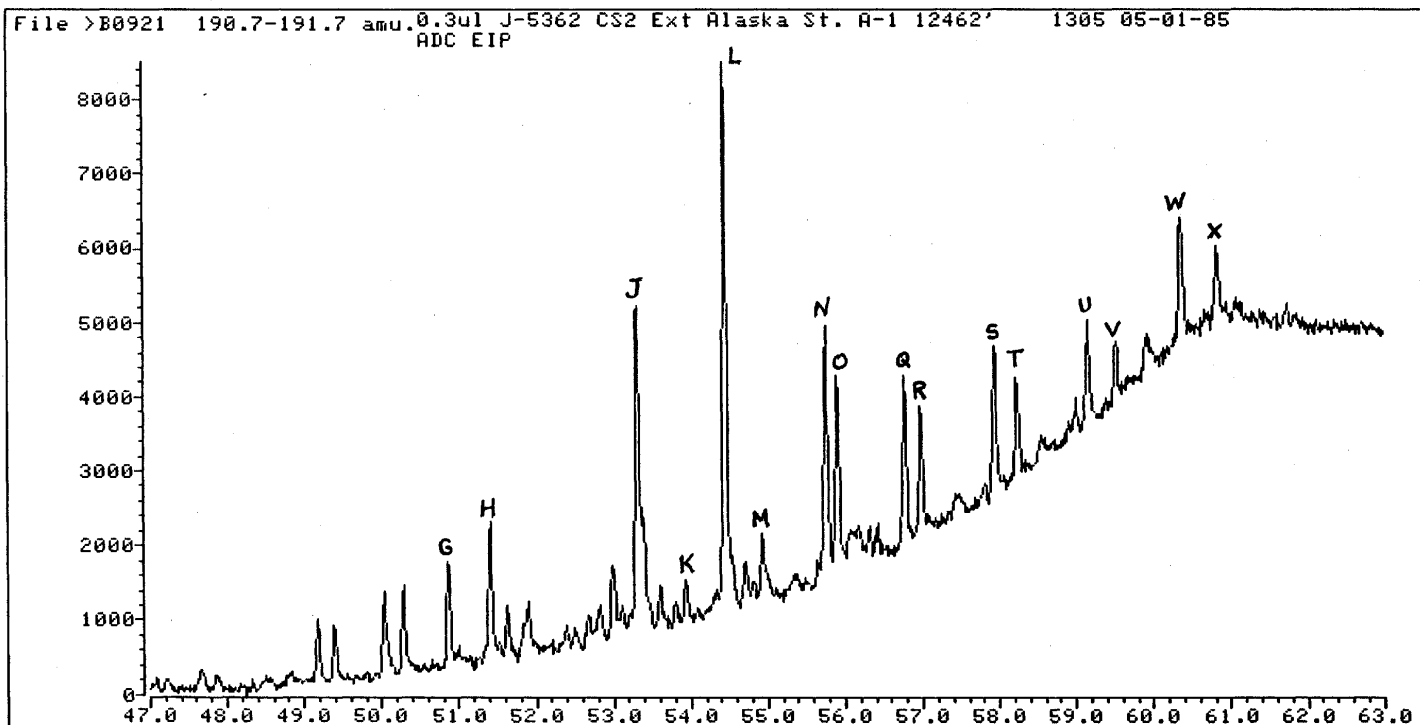
1972 191
Exxon Alaska St. A-1
12,443'



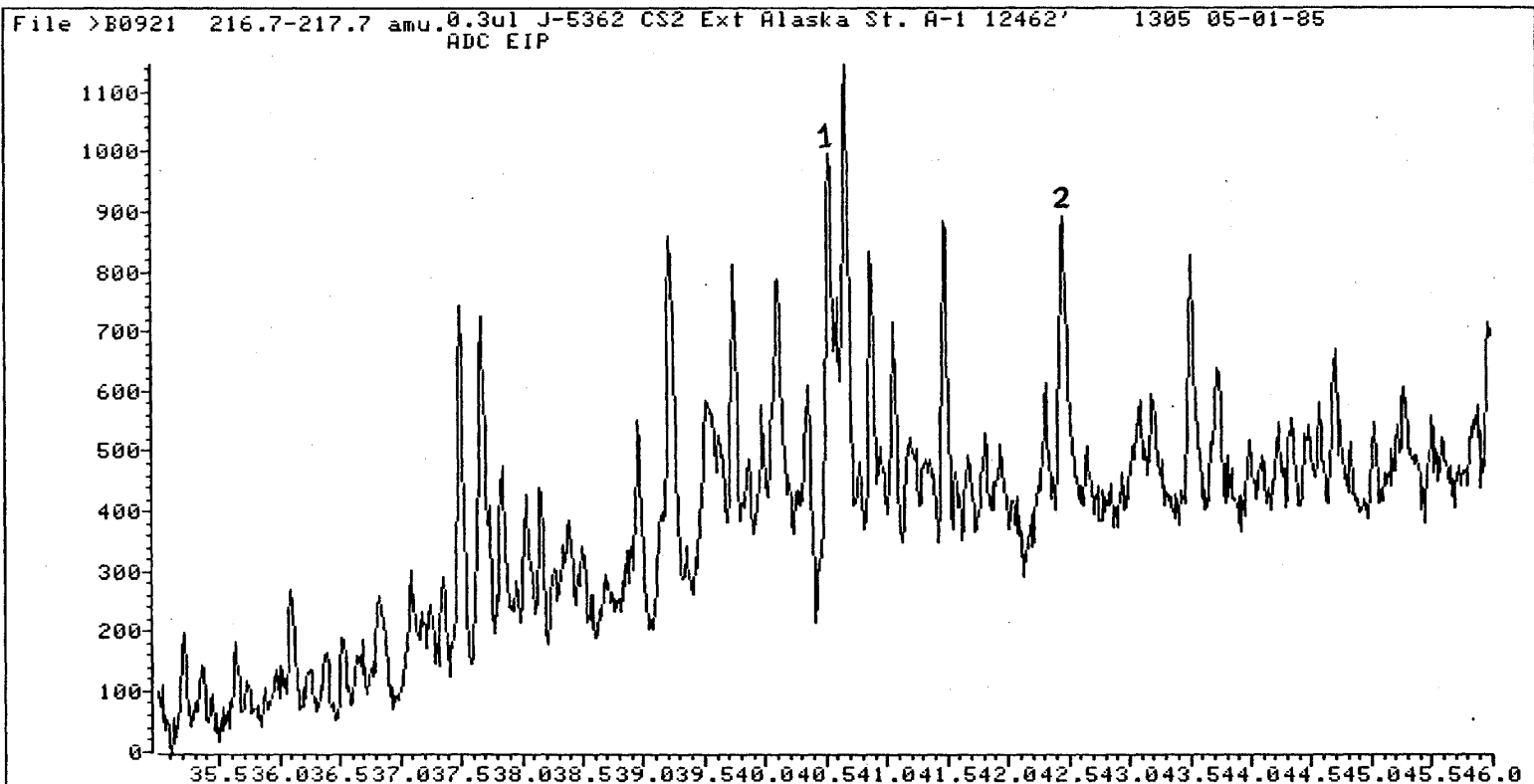
Exxon Alaska St. A-1
12,462'



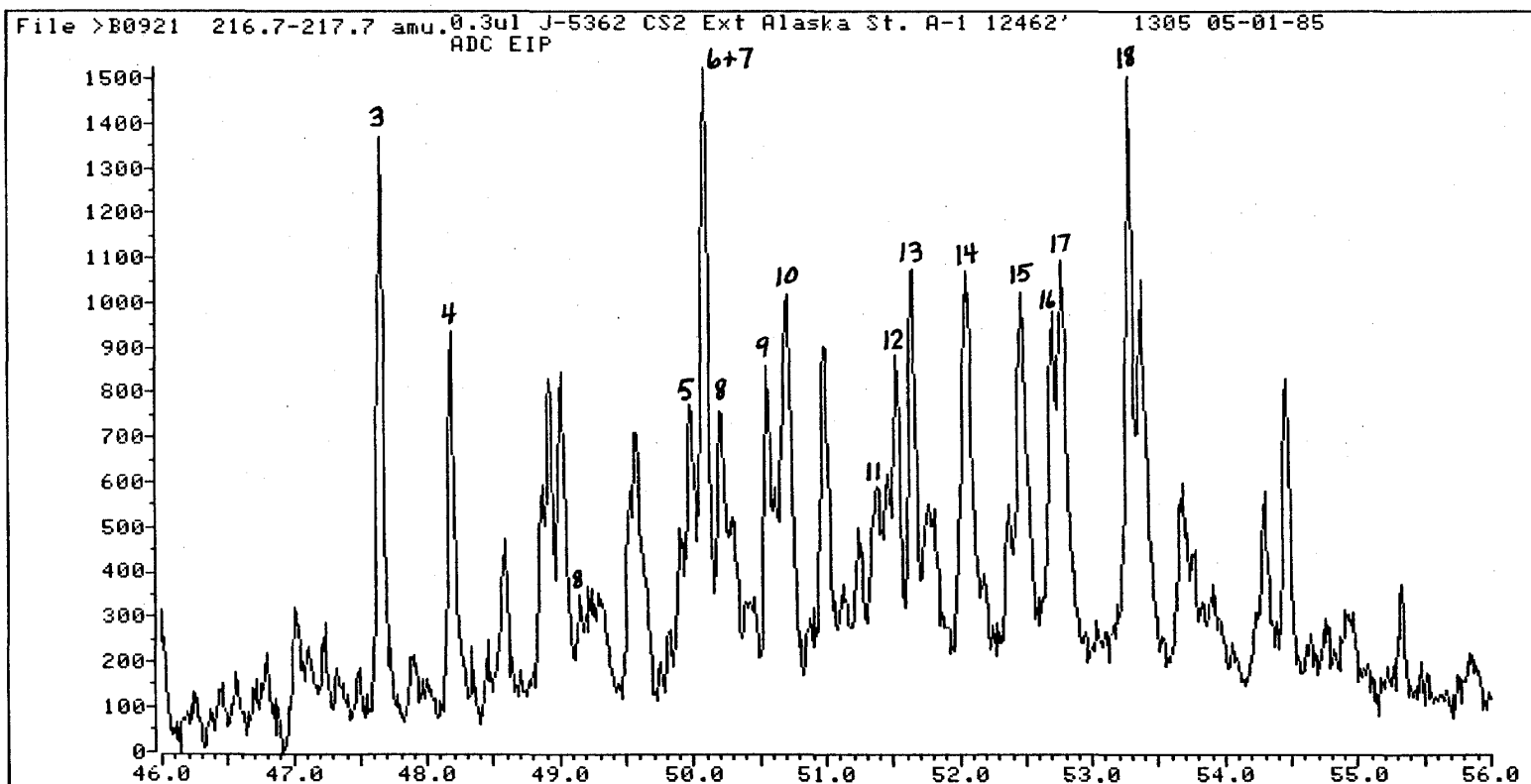
191
Exxon Alaska St. A-1
12,462'



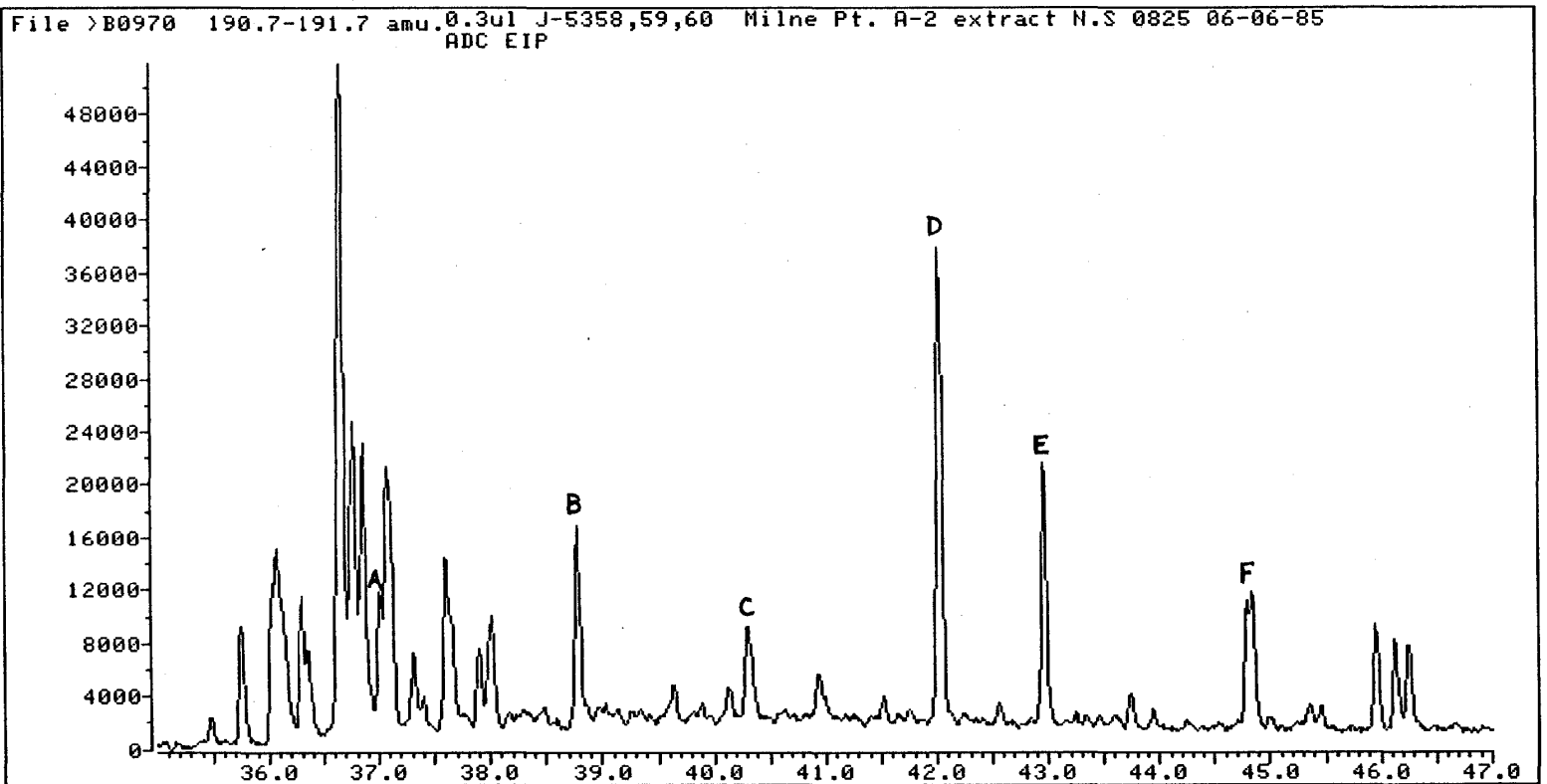
17-2-87
Exxon Alaska St. A-1
12,462'



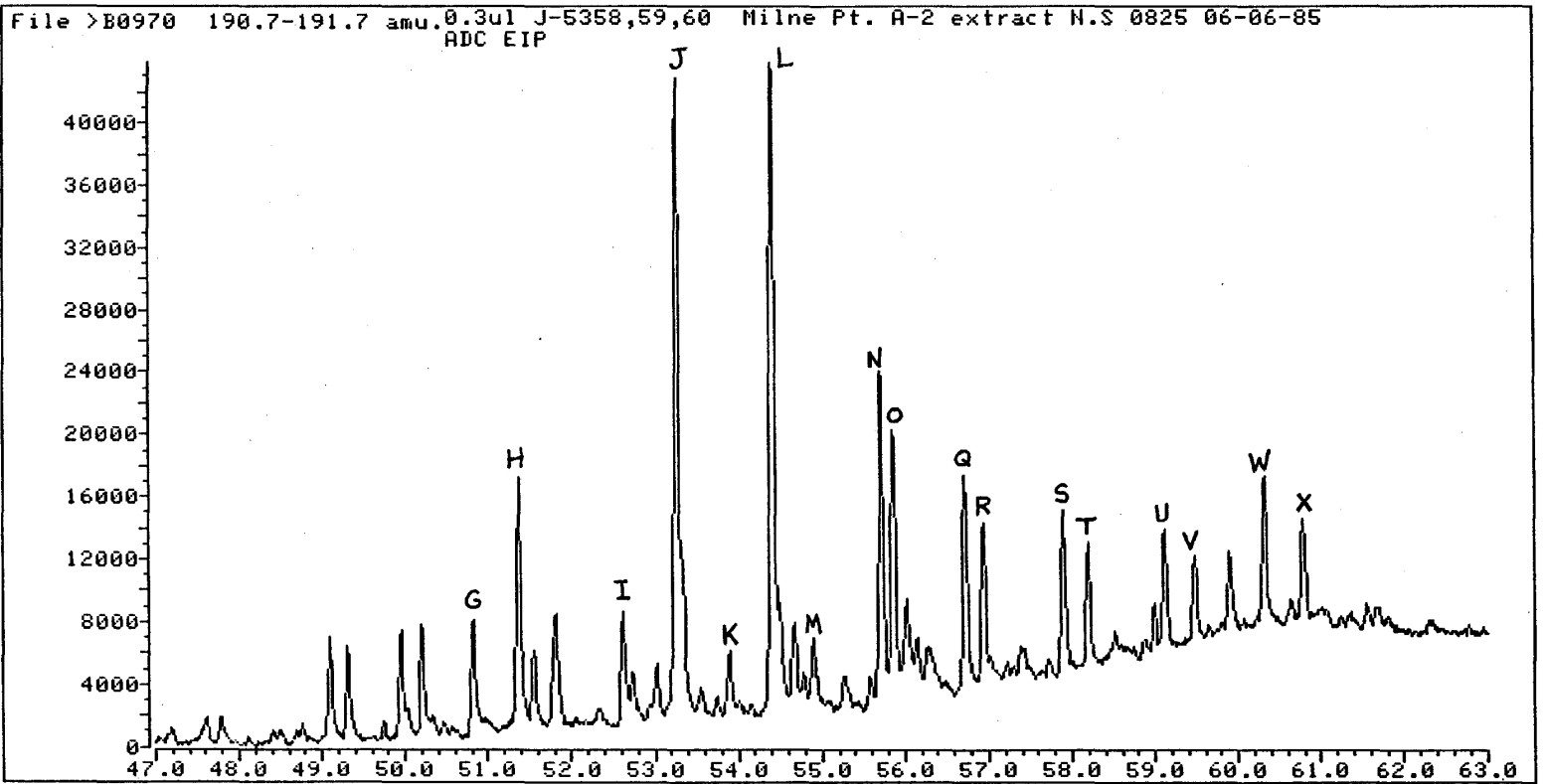
Exxon Alaska St. A-1
12,462'



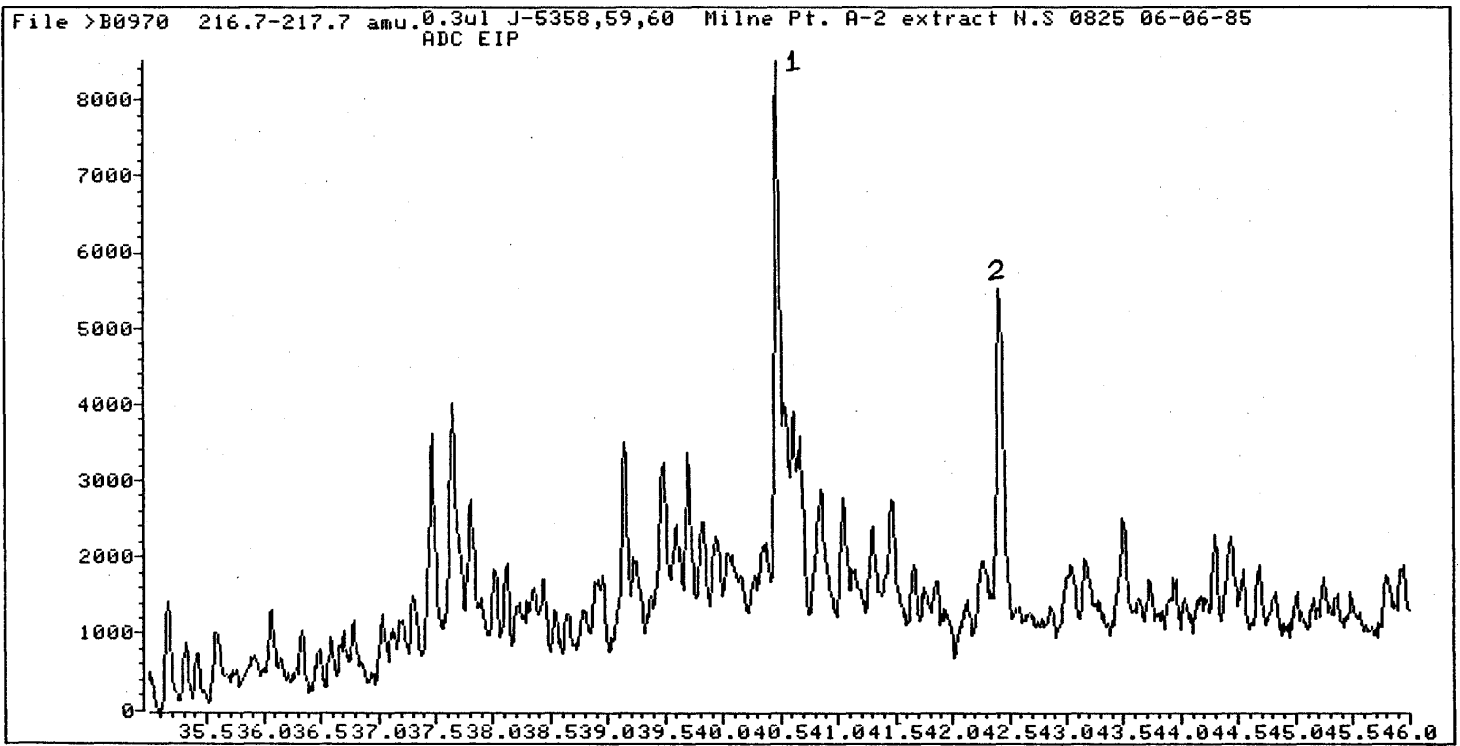
Conoco Milne Pt. A-2
8194'-8247'



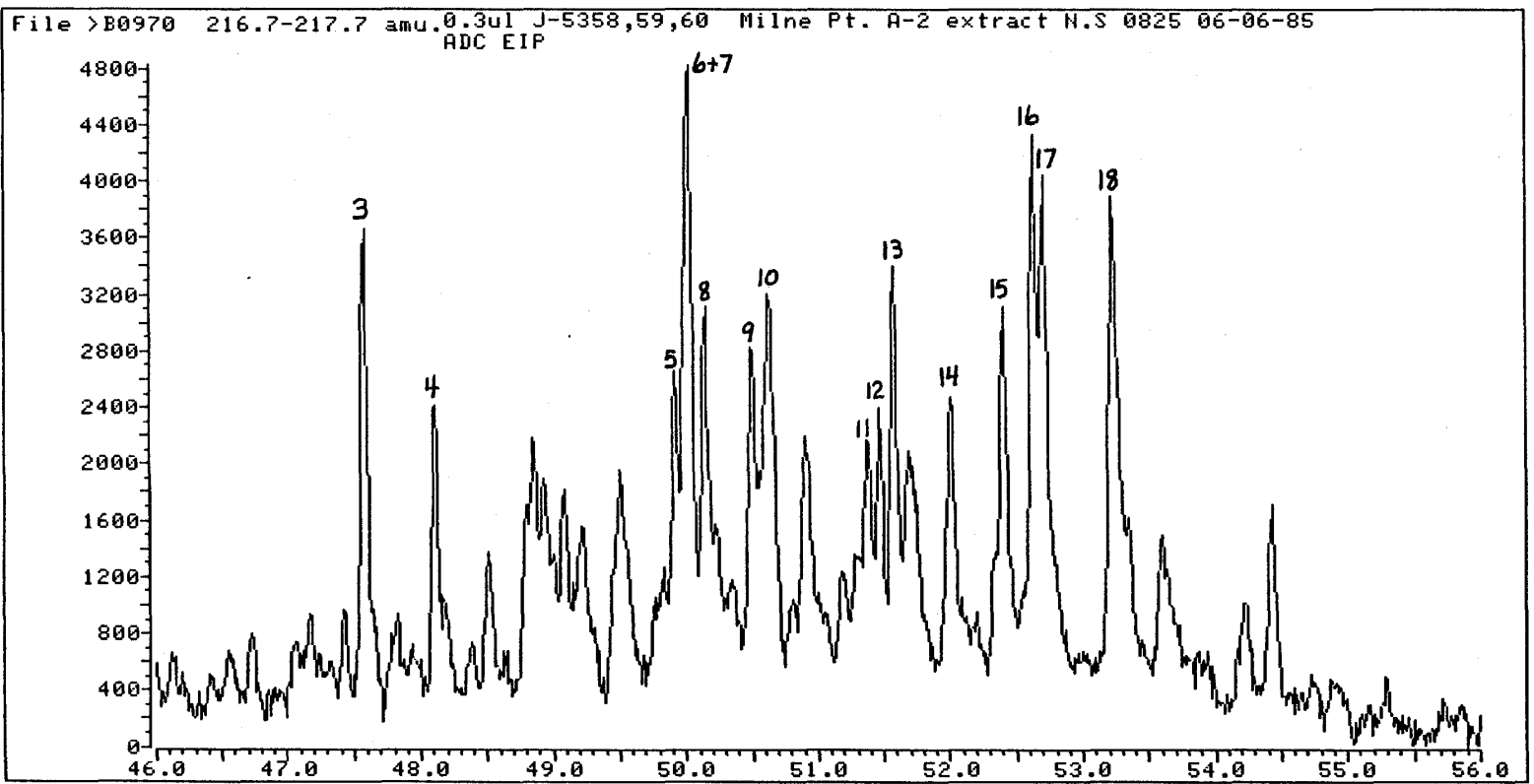
Conoco Milne Pt. A-2
8194'-8247'



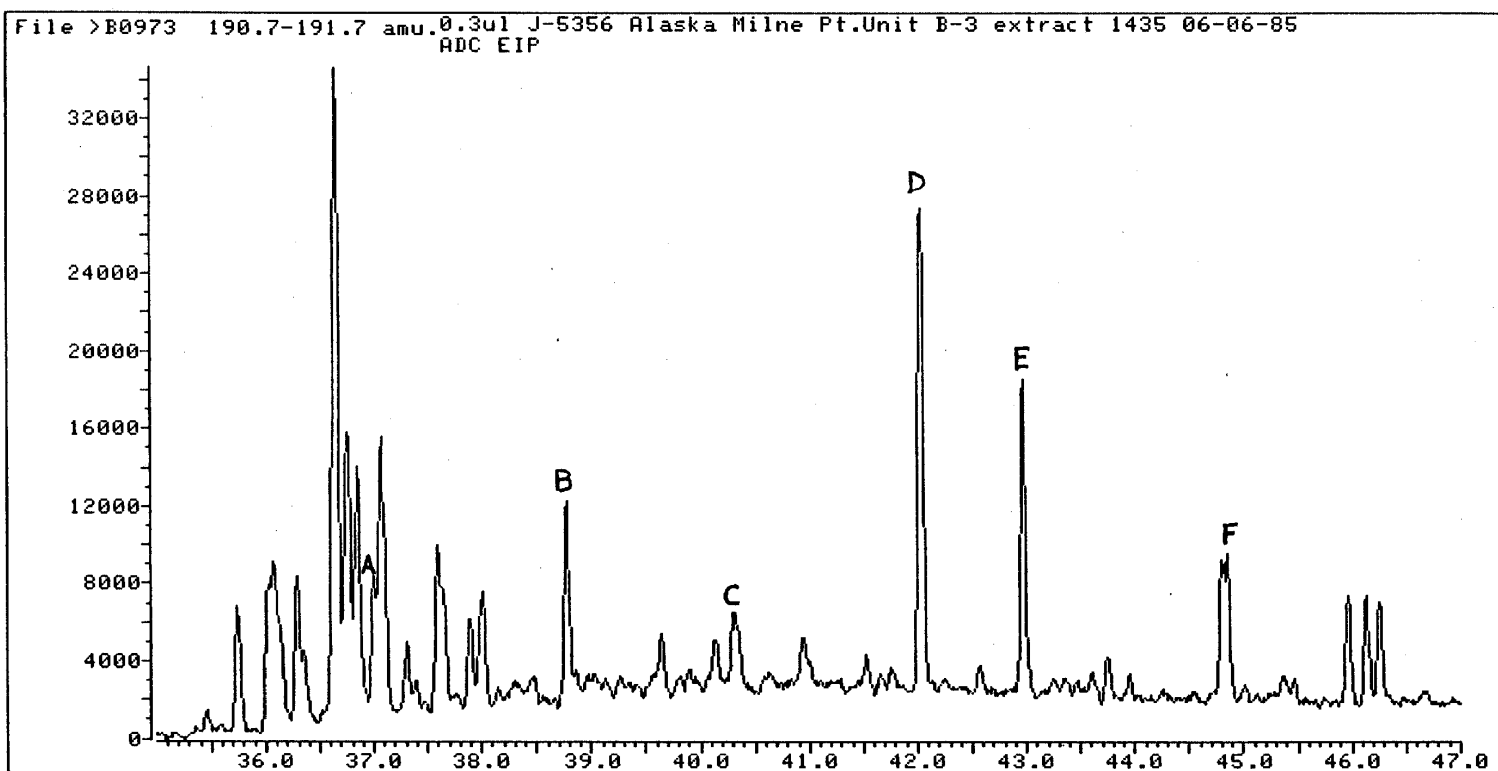
Conoco Milne Pt. A-2
8194'-8247'



172 217
Conoco Milne Pt. A-2
8194'-8247'

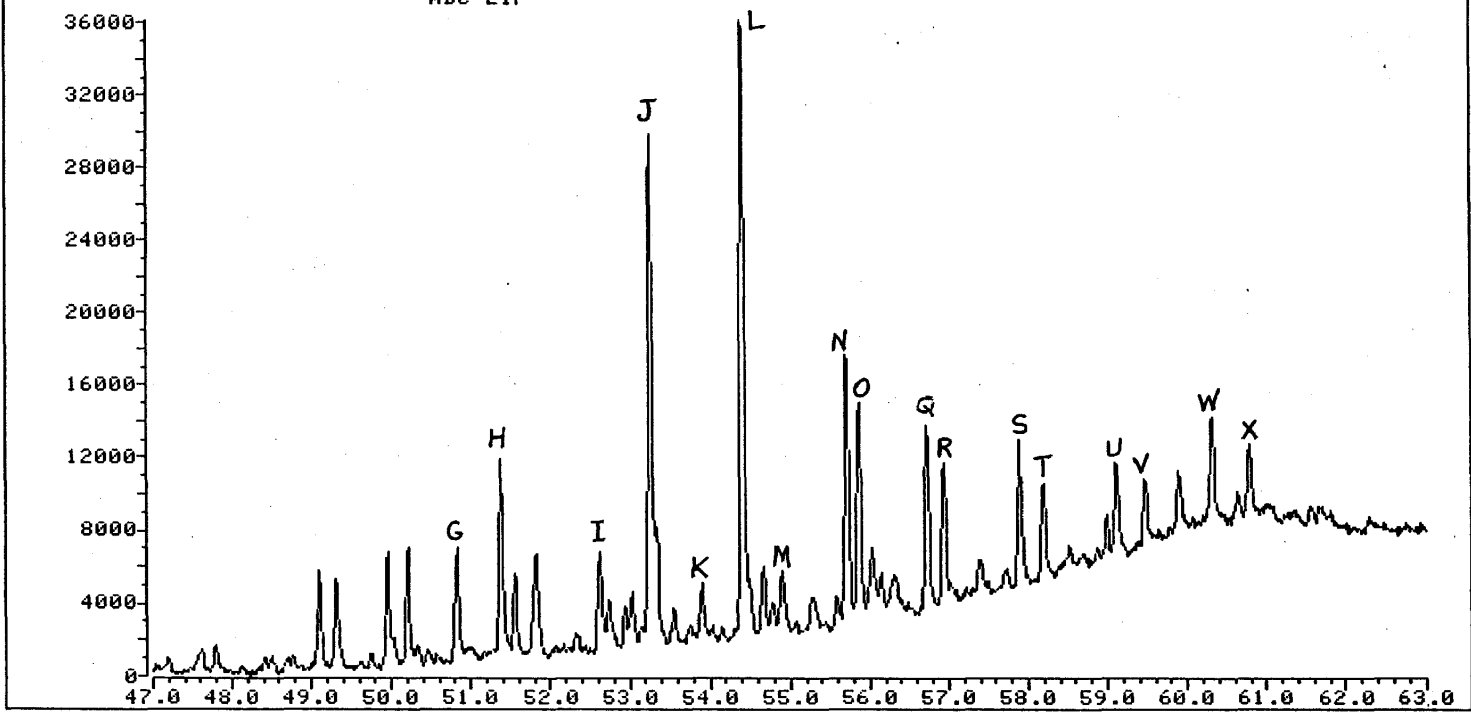


Conoco Milne Pt. Unit B-3
7421'

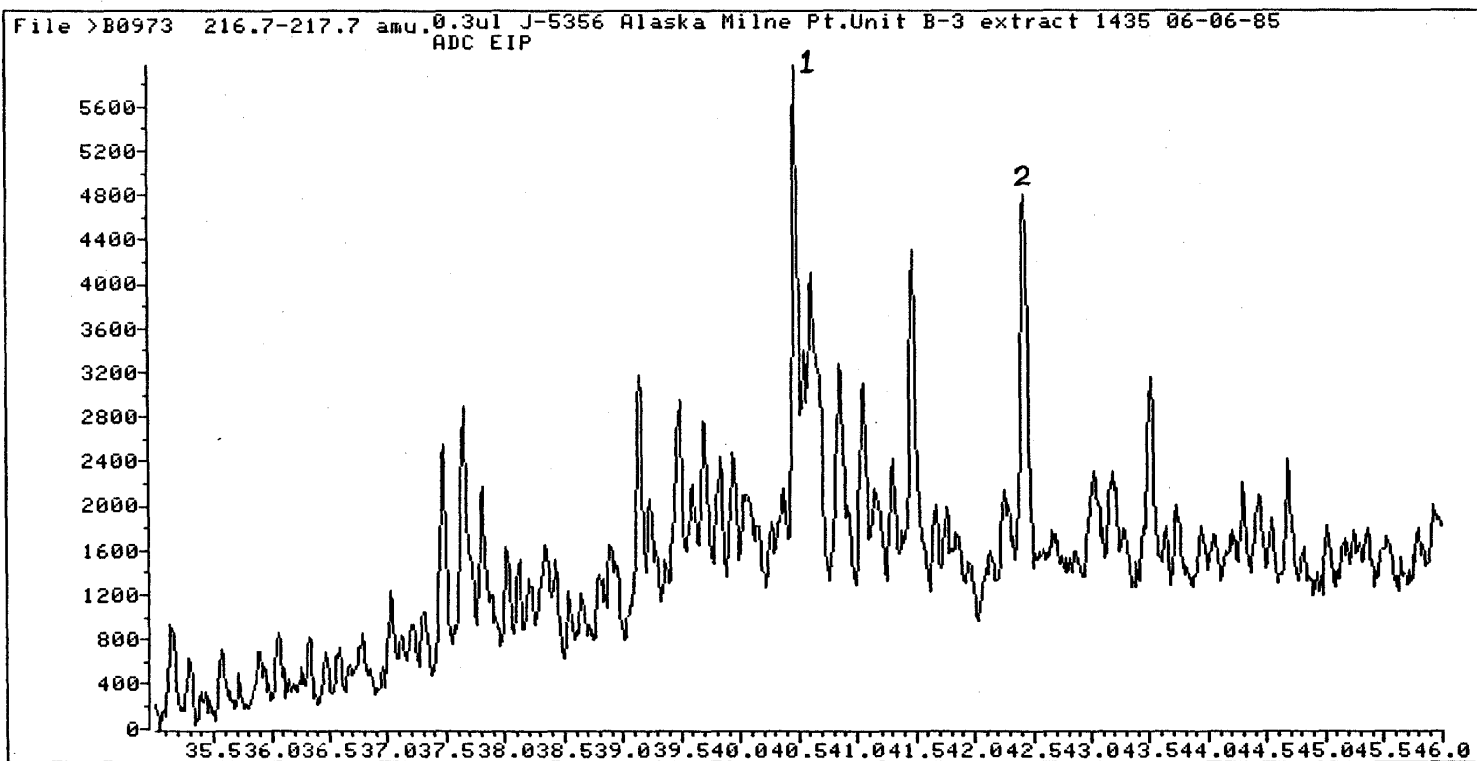


192 121
Conoco Milne Pt. Unit B-3
7421'

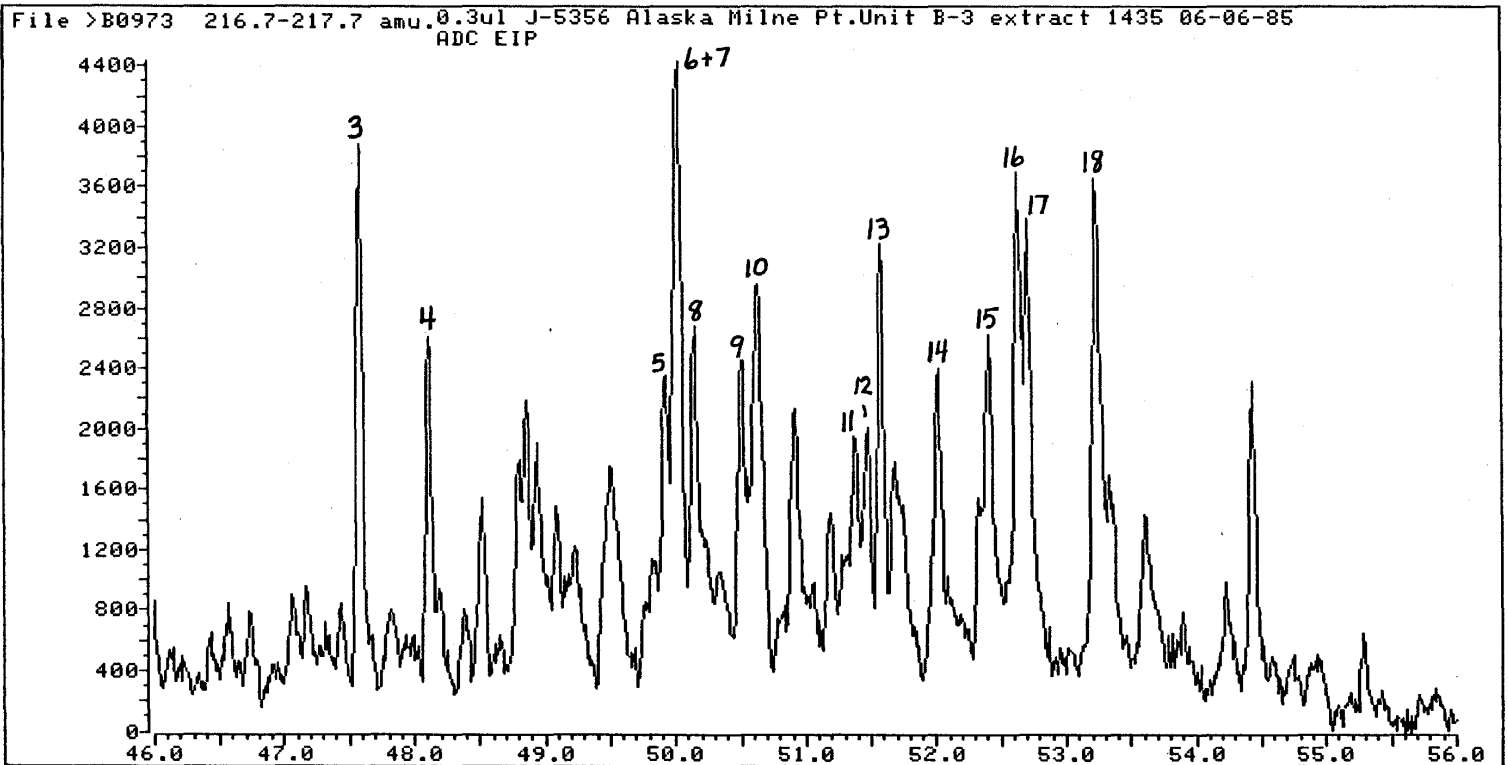
File >B0973 190.7-191.7 amu.0.3ul J-5356 Alaska Milne Pt.Unit B-3 extract 1435 06-06-85
ADC EIP



Conoco Milne Pt. Unit B-3
7421'

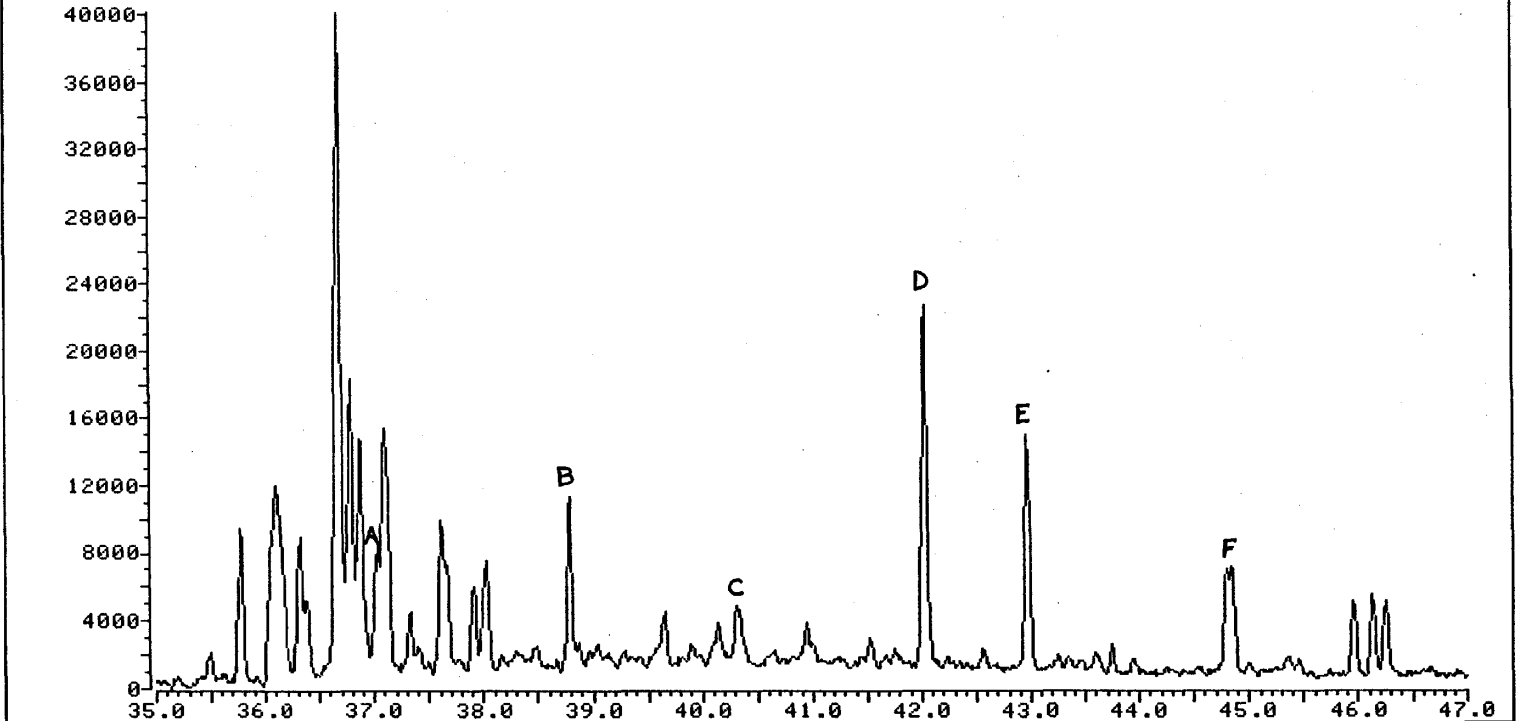


Conoco Milne Pt. Unit B-3
7421'

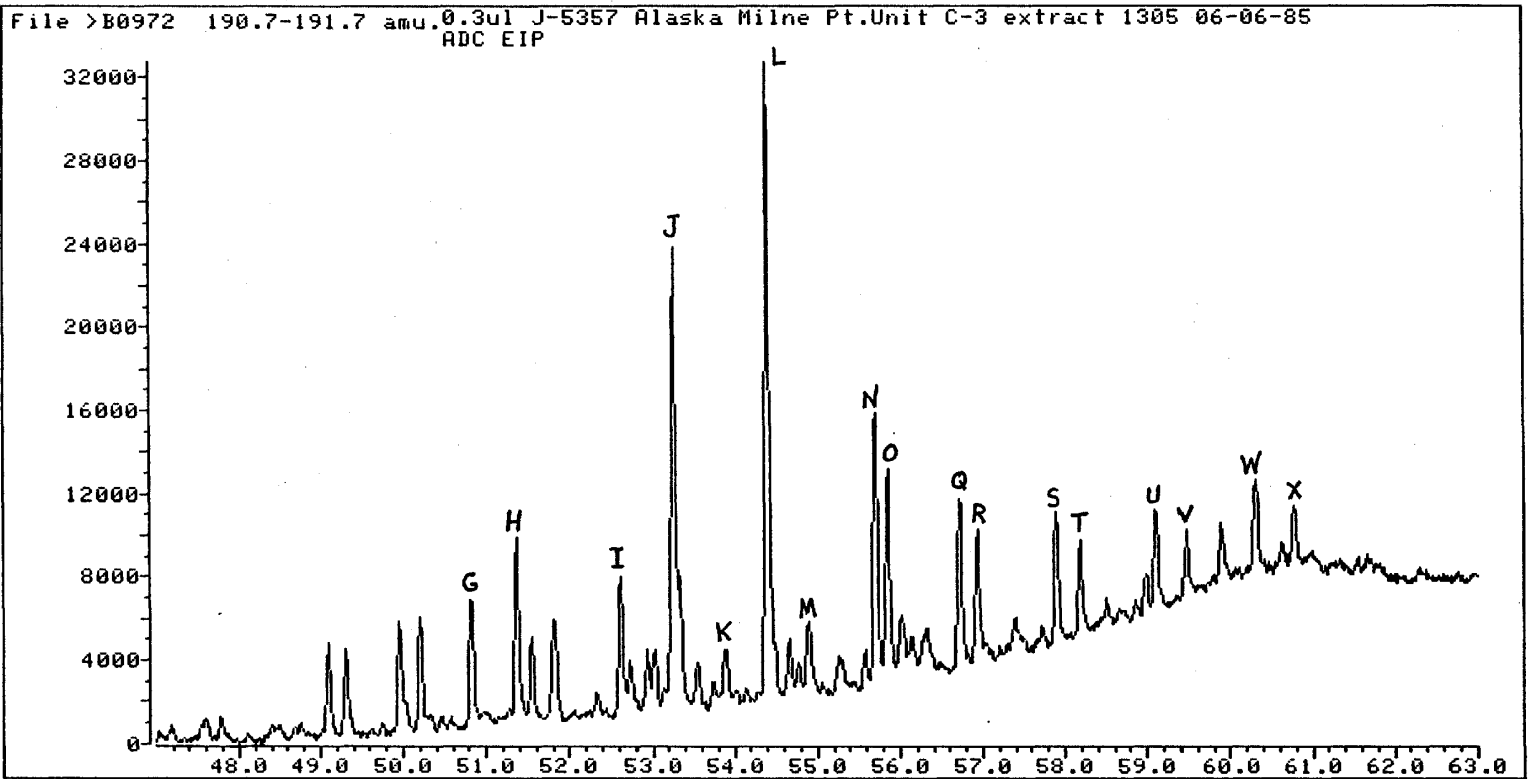


Conoco Milne Pt. Unit C-3
8099'

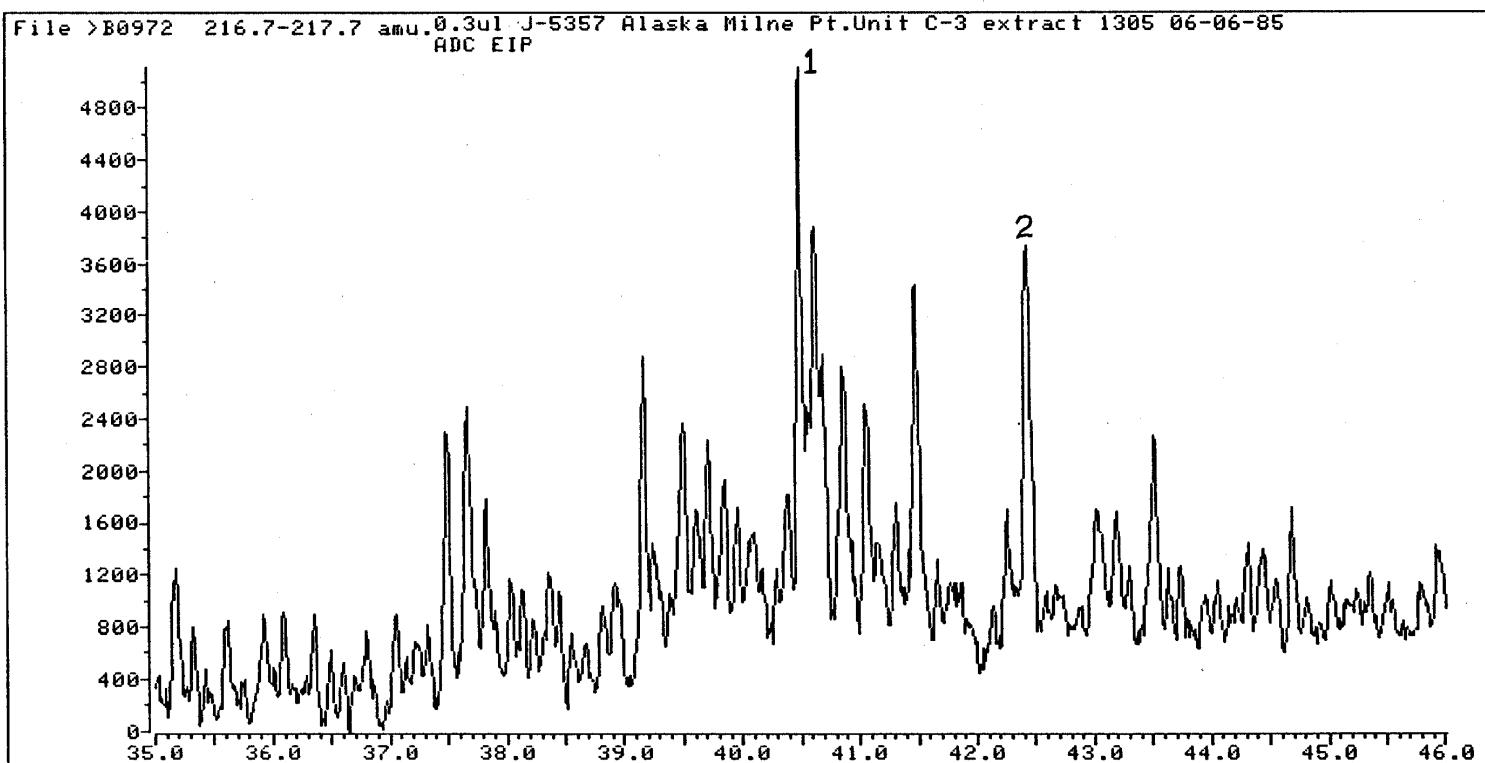
File >B0972 190.7-191.7 amu. 0.3ul J-5357 Alaska Milne Pt. Unit C-3 extract 1305 06-06-85
ADC EIP



Conoco Milne Pt. Unit C-3
8099'



Conoco Milne Pt. Unit C-3
8099'



Conoco Milne Pt. Unit C-3
8099'

