

**Extractable Organic Matter Analysis Data of Pan American USA Edna  
May Walker No. 1 Well**

**12 July 1985**

**Total of 11 pages in report**

**Geologic Materials Center Data Report 63**

## ROCK EXTRACTION DATA

Depth	Extractable Organic Matter (ppm)
11,780-11,980	2,163
13,580-13,980	1,701
14,180-14,380	33,511
14,980-15,180	2,210
15,880-16,300 (shale)	1,618
15,880 - 16,300 (sandstone)	58

## HYDROUS PYROLYSIS EXTRACTION DATA

Depth	Extractable Organic Matter (Pyrolysate), ppm
13,580-13,980	875
14,180-14,380	48,796
14,980-15,180	2,684
15,880-16,300	1,725

RECEIVED

JUL 12 1985

Alaska Oil & Gas Cons. Commission  
Anchorage

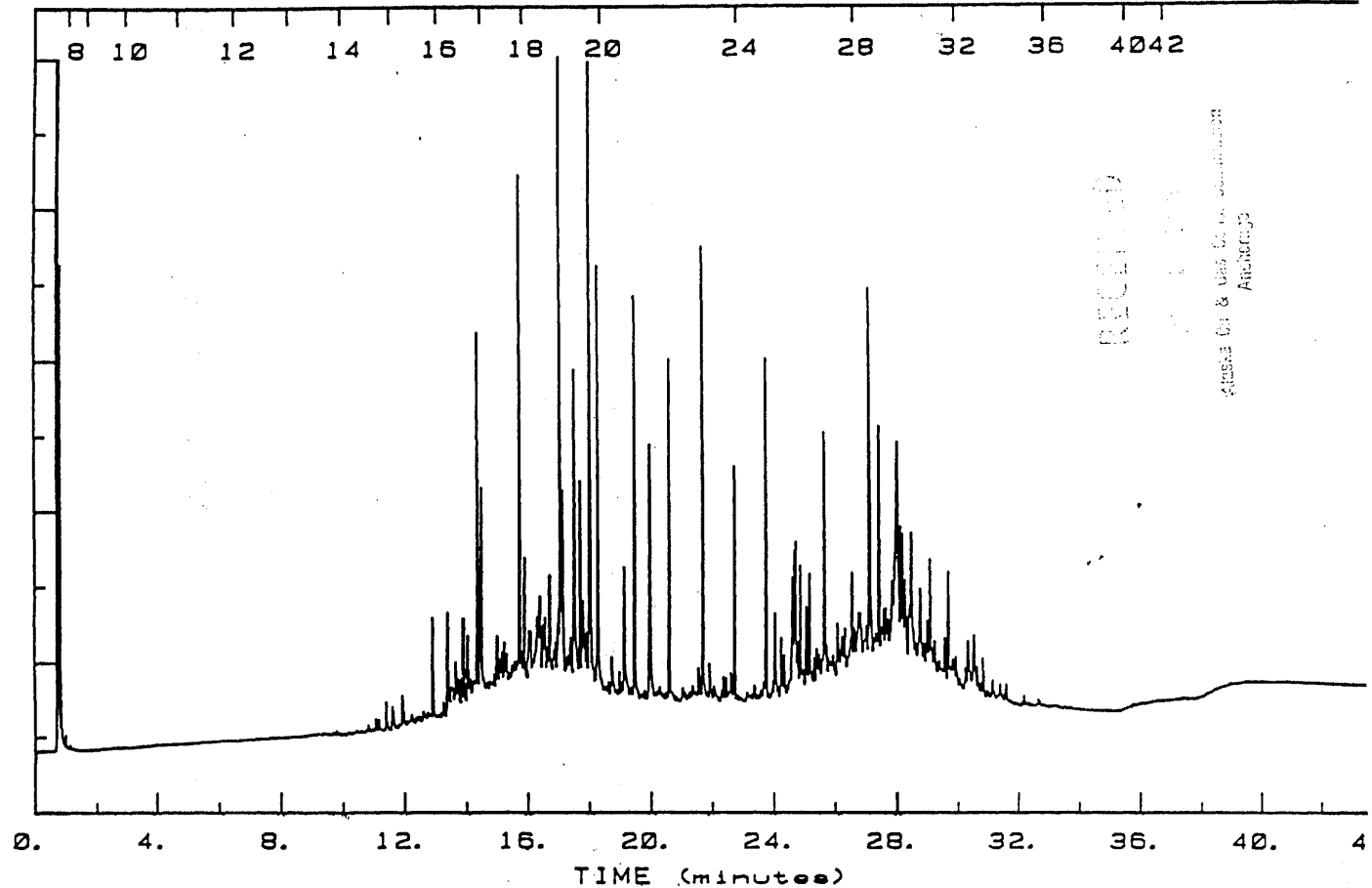
12 July 1985

GMC Data Report 63

1/11

GC Data Point 63

Peak Height  
(Enlarged x 166.400)

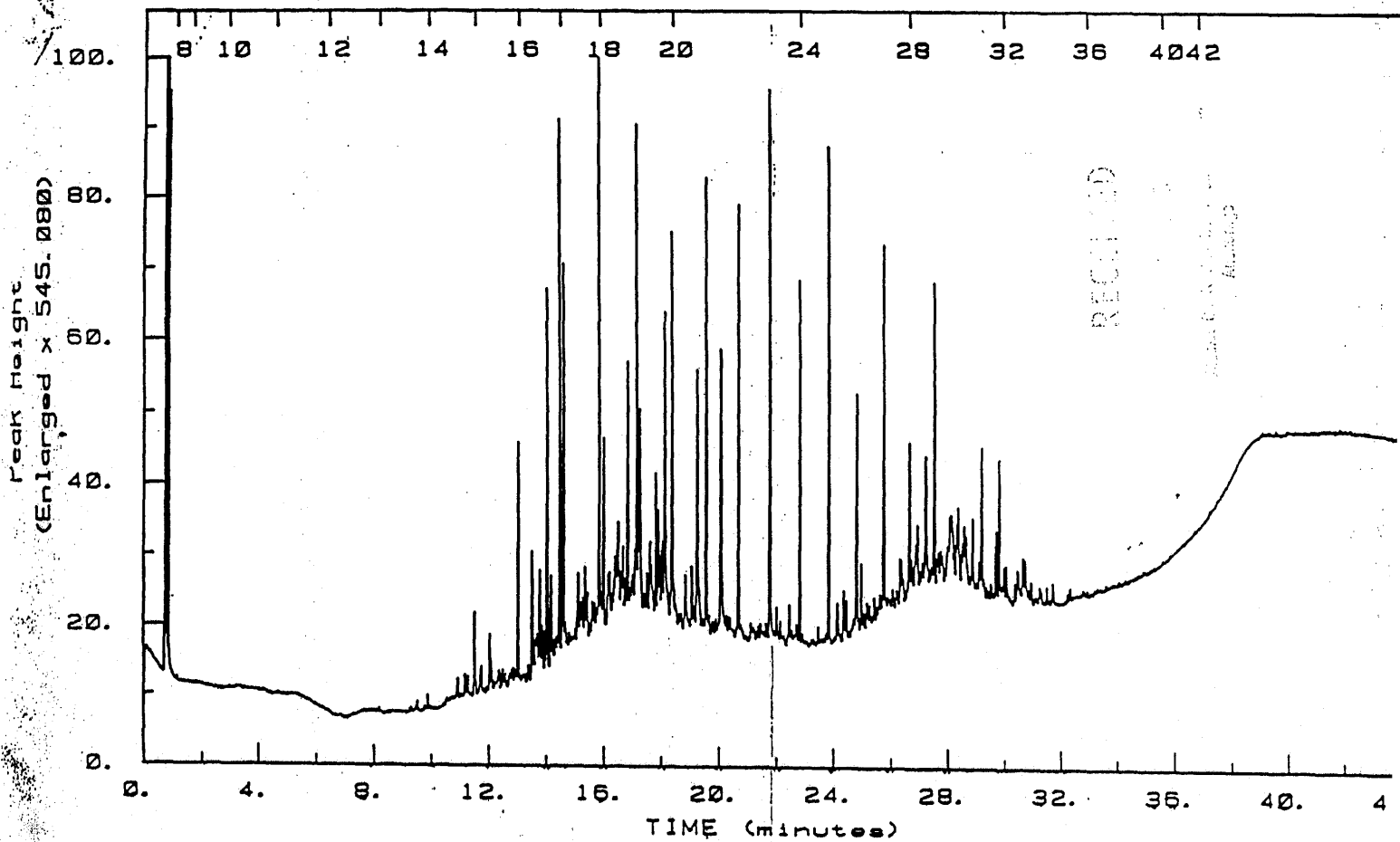


RECEIVED

Charles D. & Lois G. DeGroot  
Attorneys

11/76

Sample: AM9315-Satara      Injected at: 23:11:26 ON JUN 5, 1985  
 GC No: JTS 851092678      Raw File: G23895      Channel: 26  
 Edna Mae Walker #1 11780-11980 shale      Rock Extract  
 RES extract



Sample: AM9302-Satas

Injected at: 17:18:28 ON JUN 5, 1985

GC No: JTS 851092674

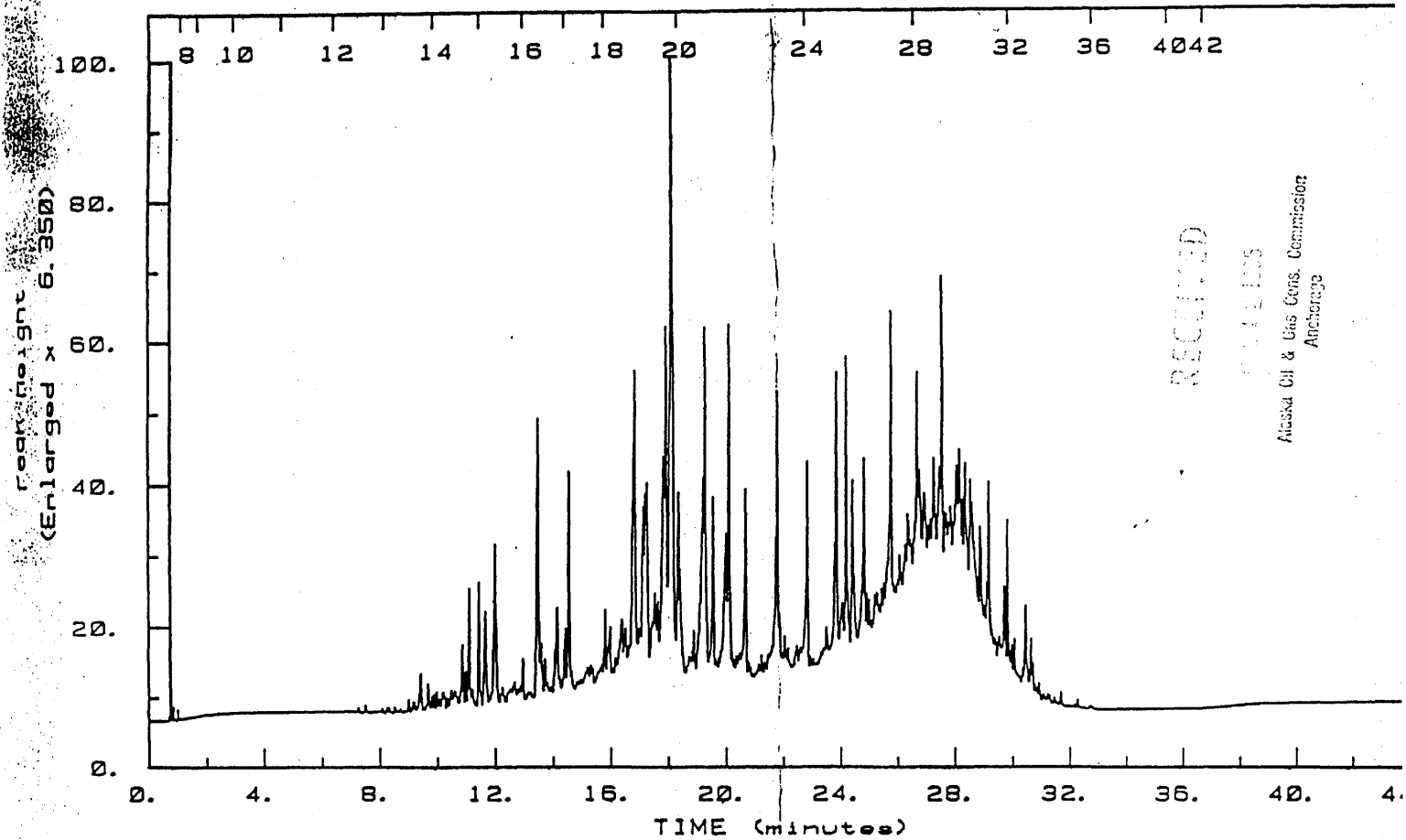
Raw File: G23890

Channel: 26

Edna Mae Walker #1 13580-980' shale

RES extract

Rock Extract



RECORDED

JUN 5 1985

Alaska Oil & Gas Cons. Commission  
Anchorage

Sample: AM9305-Sutara

Injected at: 18:26:16 ON JUN 5, 1985

GC No: JTS 851092675

Raw File: G23891

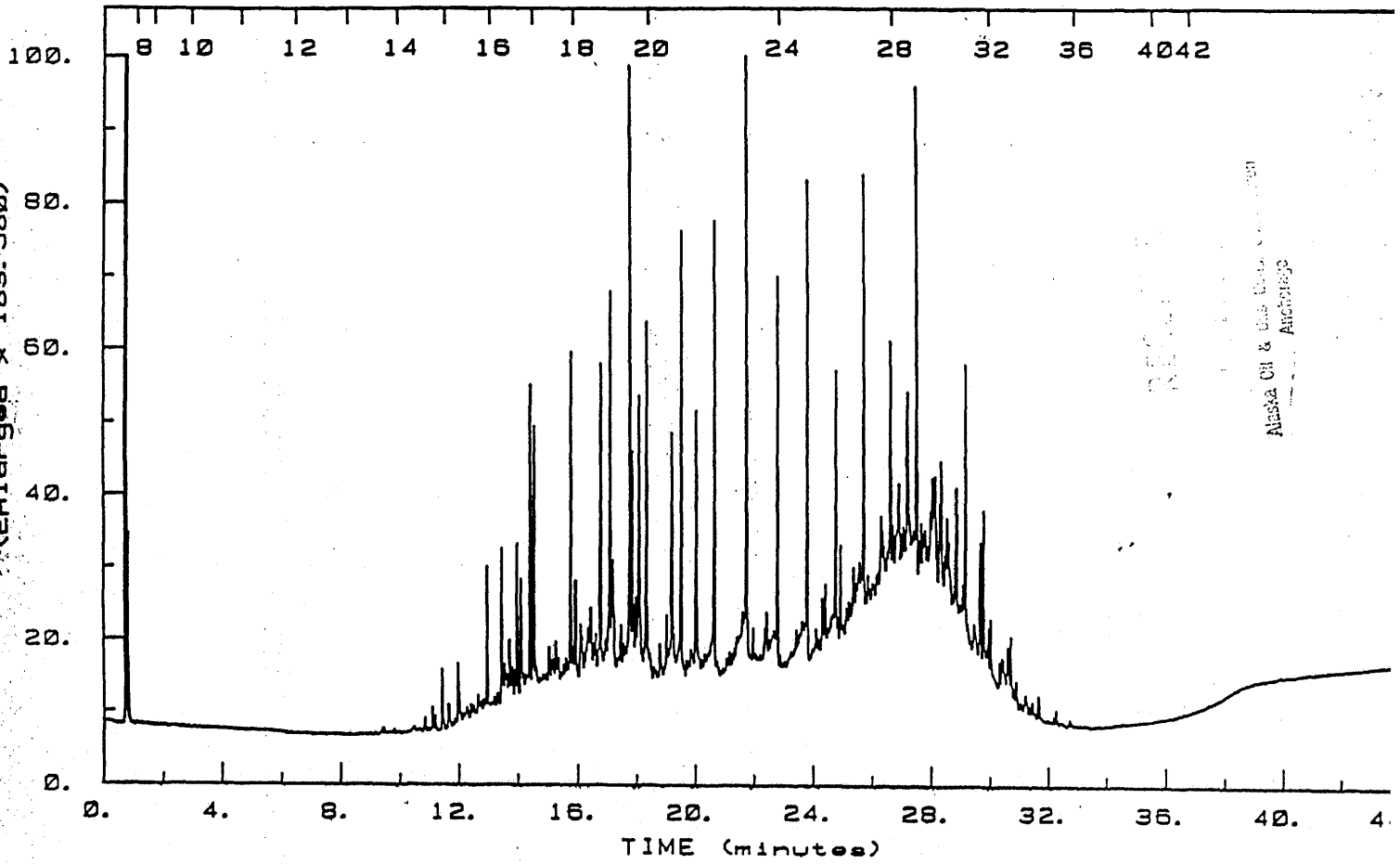
Channel: 26

Edna Mae Walker #1 14180-380' coal

Rock Extract

RES extracts

Residual Weight  
(Enlarged x 183.580)



Alaska Oil & Gas Co. - Anchorage

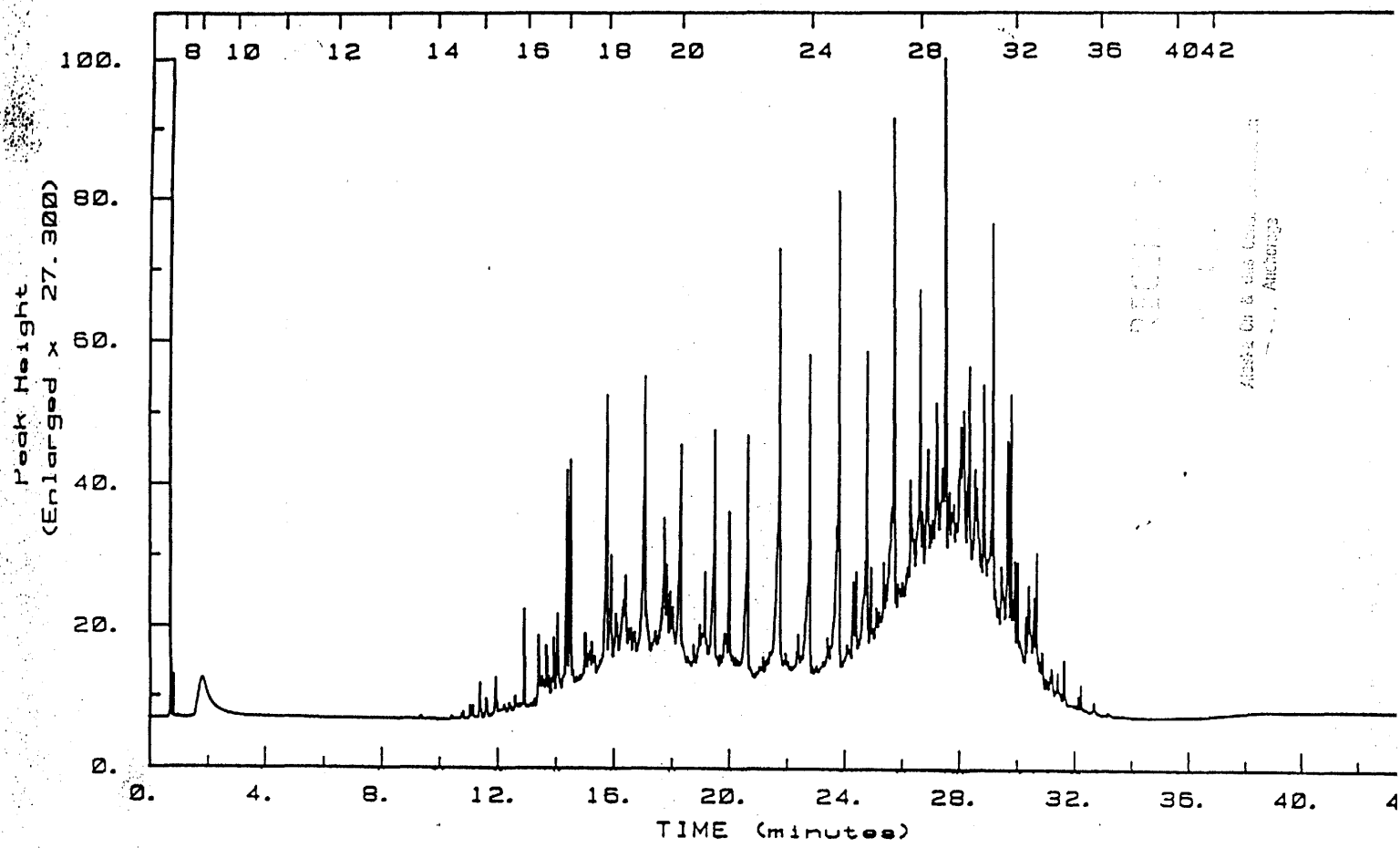
Sample: AM9308-Satara      Injected at: 19:33:45 ON JUN 5, 1985  
GC No: JTS 851092676      Raw File: G23892      Channel: 26

Edna Mae Walker #1 14980-15180' shale  
RES extract

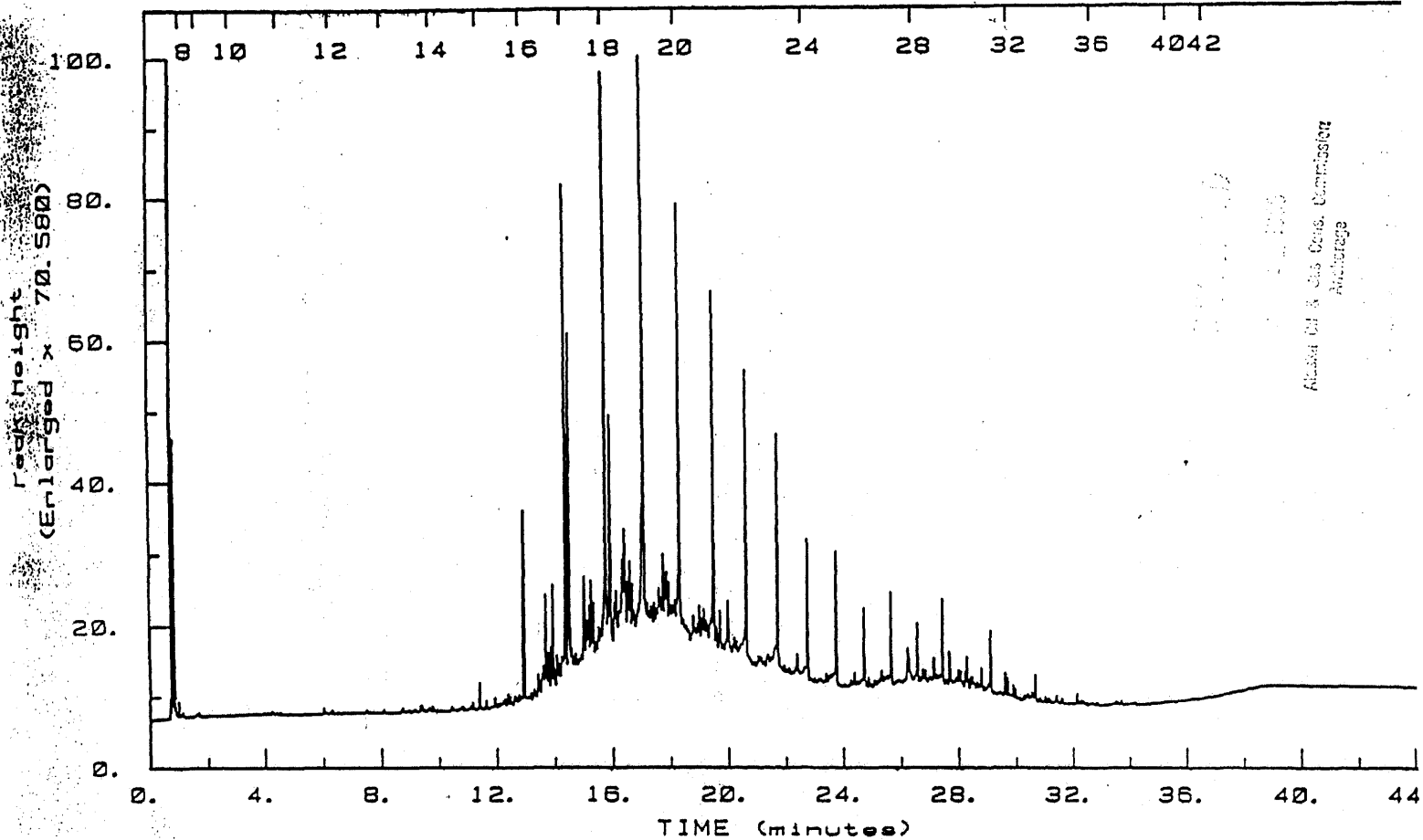
Rock Extra

CMV Data 04/11/85

11/9



Sample: AM9311-Sutans      Injected at: 21:53:18 ON JUN 5, 1985  
 GC No: JTS 851092677      Raw File: G23893      Channel: 26  
 Edna Mae Walker #1 15880-16300' shale      Rock Extra  
 RES extracts



Sample: AM9314-Satus

Injected at: 17:49:49 ON JUN 6, 1985

GC No: JTS 851102662

Raw File: G23894

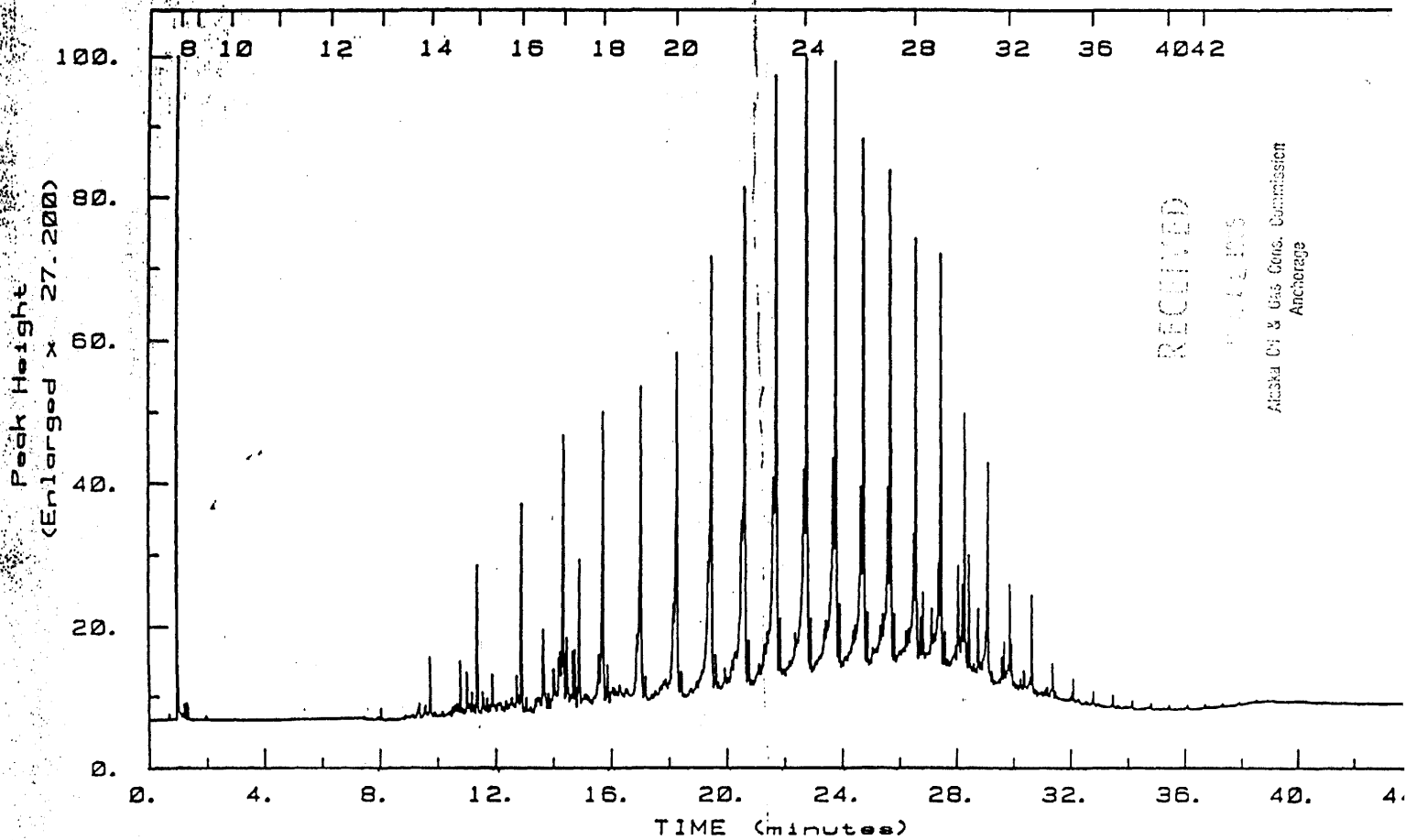
Channel: 26

Edna Mae Walker #1 15980-16300' sandstone

Rock Extract

R&S extract





RECEIVED

JUN 12 1985

Alaska Oil & Gas Corp. Consultant  
Anchorage

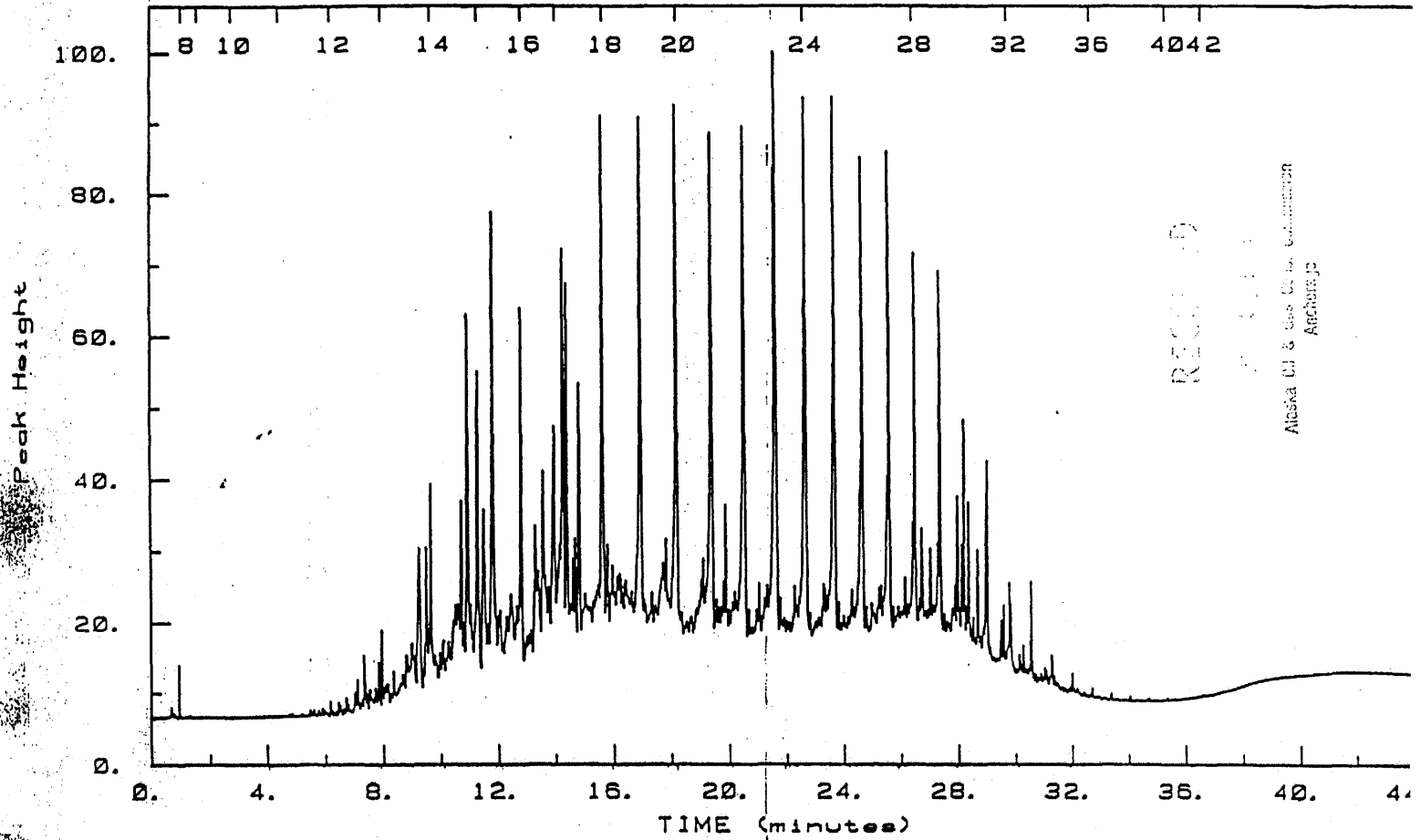
Sample: AM9303-Satus      Injected at: 13:45:58 ON JUN 12, 1985

GC No: JTS 851142630      Raw File: G15499      Channel: 26

Edna Mae Walker #1 13580-990' shale

Free Pyrolysate 325°

Extraction After  
Hydrous Pyrolysis



Sample: AM9306-Sutars

Injected at: 18:50:05 ON JUN 17, 1985

GC No: JTS 851172660

Raw File: G17101

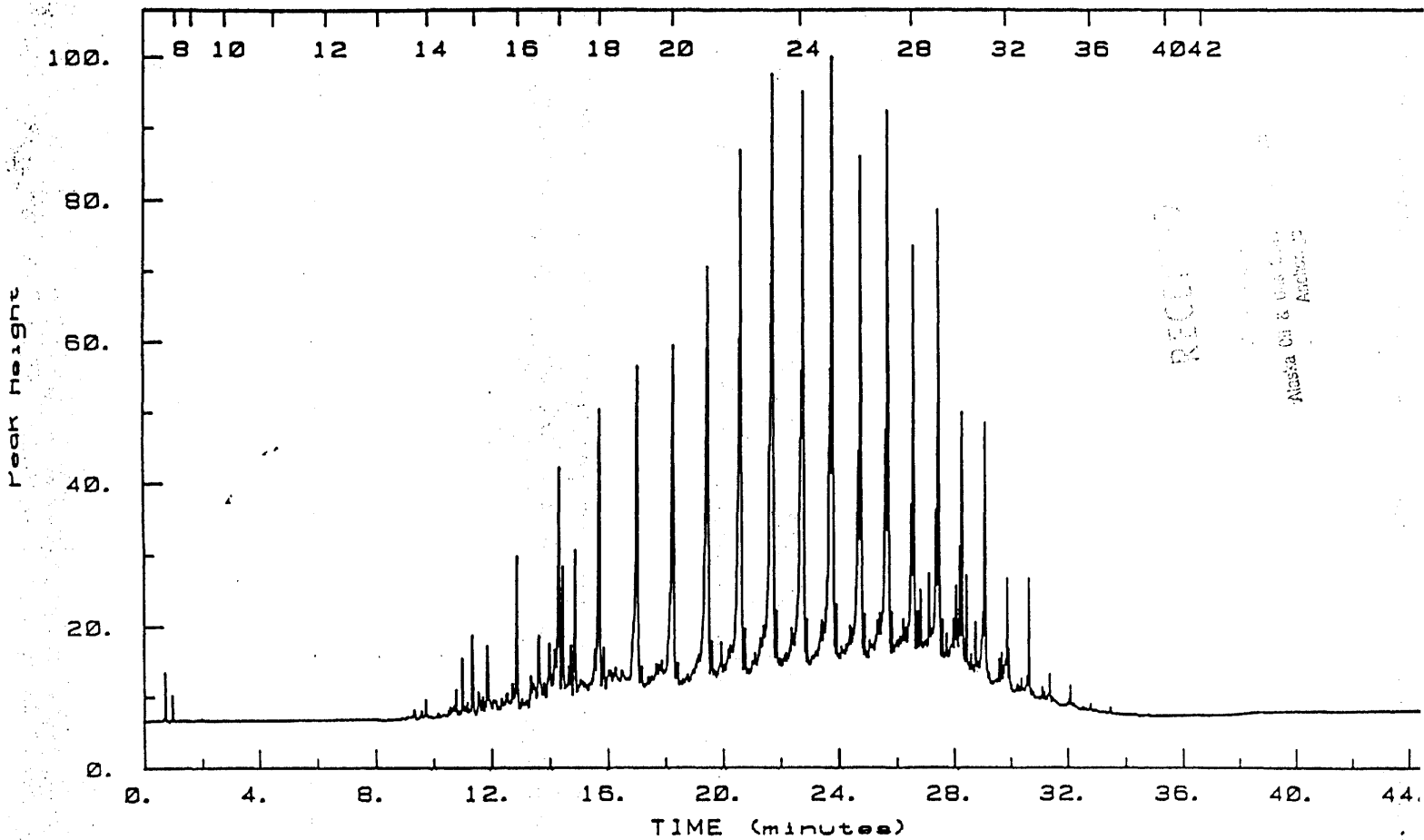
Channel: 26

Edna Mae Walker #1 14180-14380' coal

Extraction After

free pyrolysis 325°

Hydroxyl Pyrolysis



Sample: AM9309-Sataus

Injected at: 16:07:30 ON JUN 12, 1985

GC No: JTS 851142632

Raw File: G20700

Channel: 26

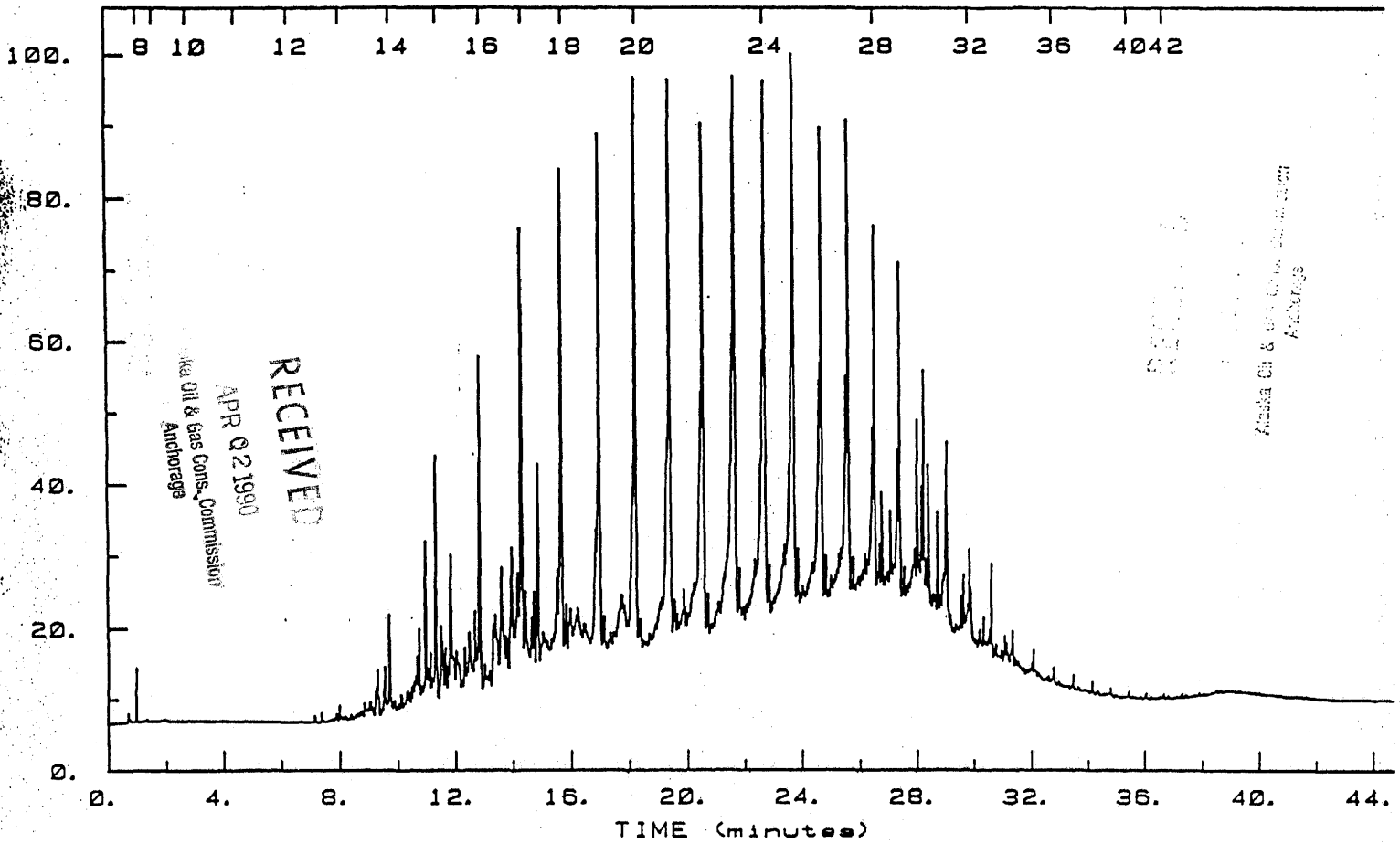
Edna Mae Walker #1

14980-15180' shale

Extraction after

Free Pyrolysis 325°

Hydroous Pyrolysis



Sample: AM9312-Sectans  
 GC No: JTS 851142638  
 Edna Mae Walker #1  
 Free Pyrolysis 325°

Injected at: 10:00:52 ON JUN 13, 1985  
 Raw File: G20636 Channel: 26

15880-16300' shale

Extraction after  
 Anhydrous Pyrolysis