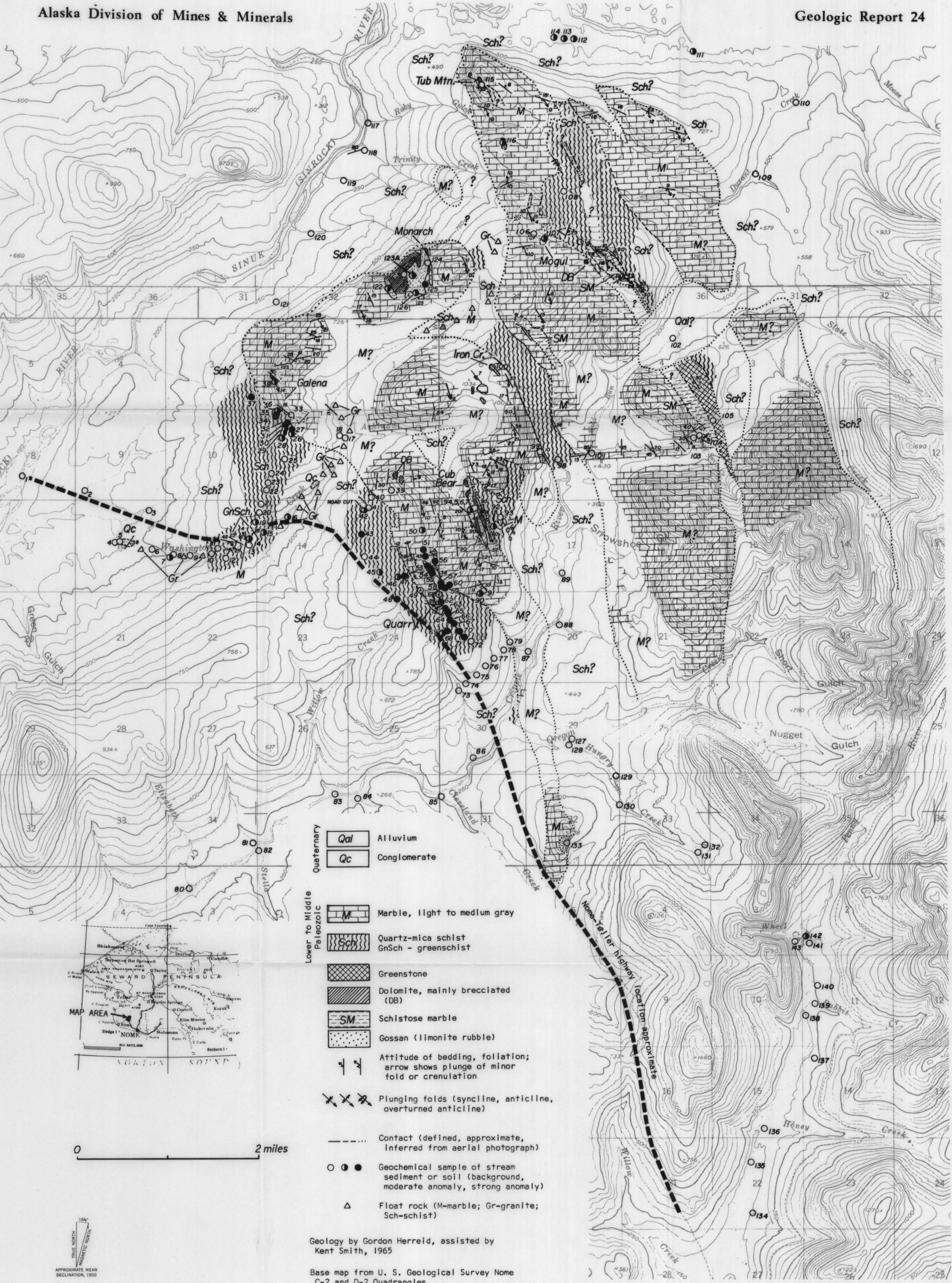
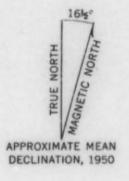


GR24-SH1



- Quaternary**
- Qal Alluvium
 - Qc Conglomerate
- Lower to Middle Paleozoic**
- M Marble, light to medium gray
 - Sch Quartz-mica schist
GnSch - greenschist
 - Gr Greenstone
 - DB Dolomite, mainly brecciated (DB)
 - SM Schistose marble
 - G Gossan (limonite rubble)
- Attitude of bedding, foliation;**
arrow shows plunge of minor fold or crenulation
- Plunging folds (syncline, anticline, overturned anticline)**
- Contact (defined, approximate, inferred from aerial photograph)**
- Geochemical sample of stream sediment or soil (background, moderate anomaly, strong anomaly)**
- Float rock (M-marble; Gr-granite; Sch-schist)**

0 2 miles



Geology by Gordon Herreid, assisted by Kent Smith, 1965

Base map from U. S. Geological Survey Nome C-2 and D-2 Quadrangles

Geological-geochemical map of the Sinuk area, Seward Peninsula, Alaska