

MILKY RIVER

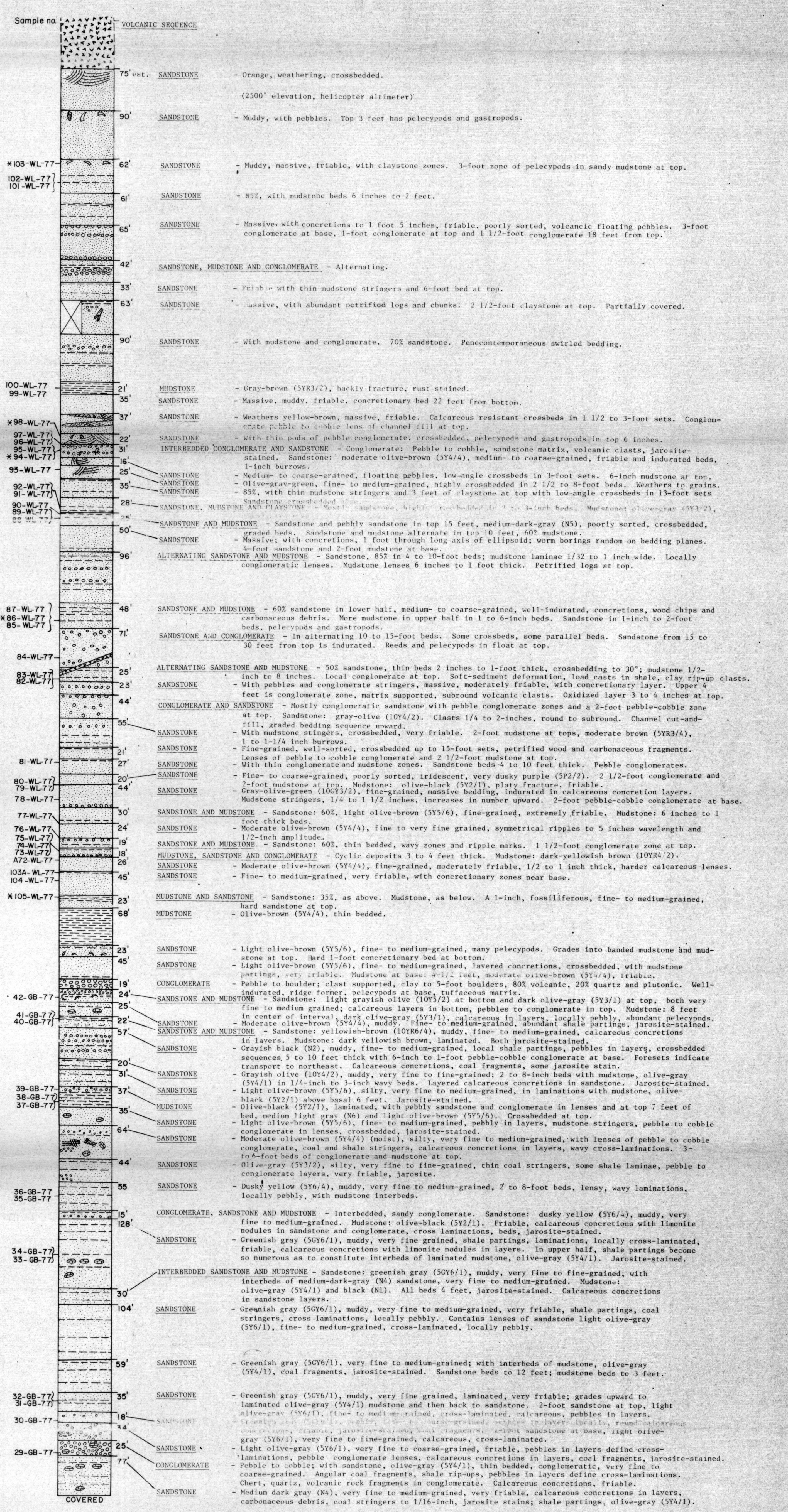
STRATIGRAPHIC SECTION

Secs. 33, 34, T. 48 S., R. 69 W.
MAP LOCATION NO. 205

JULY 1977

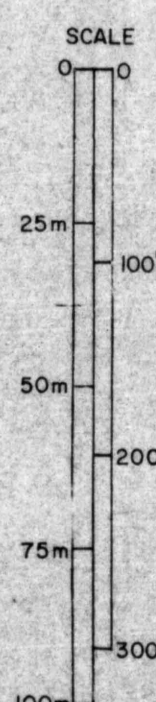
MEASURED BY: W. LYLE
I. PALMER
J. BOLM
J. MOREHOUSE

B E A R L A K E F O R M A T I O N



Porosity or Age	Permeability of Environment
	Marine?
17.7%	53mD
	Marine Open Marine
17.5%	0.86mD
4.5%	10mD
17.6%	72mD
72.8%	26mD
4.0%	1.83mD
10.1%	0.12mD

* SEE TABLE 8 FOR IDENTIFICATION OF MACROFOSSILS AND U.S.G.S. CENOZOIC LOCALITY NUMBER.



STATE OF ALASKA
DEPT. OF NATURAL RESOURCES
Div. of Geological & Geophysical Surveys