

# HEREN

## STRATIGRAPHIC SECTION NO. I

SECTION 9, T.51S. R.74W.

MAP LOCATION NO. 291

JUNE 1977

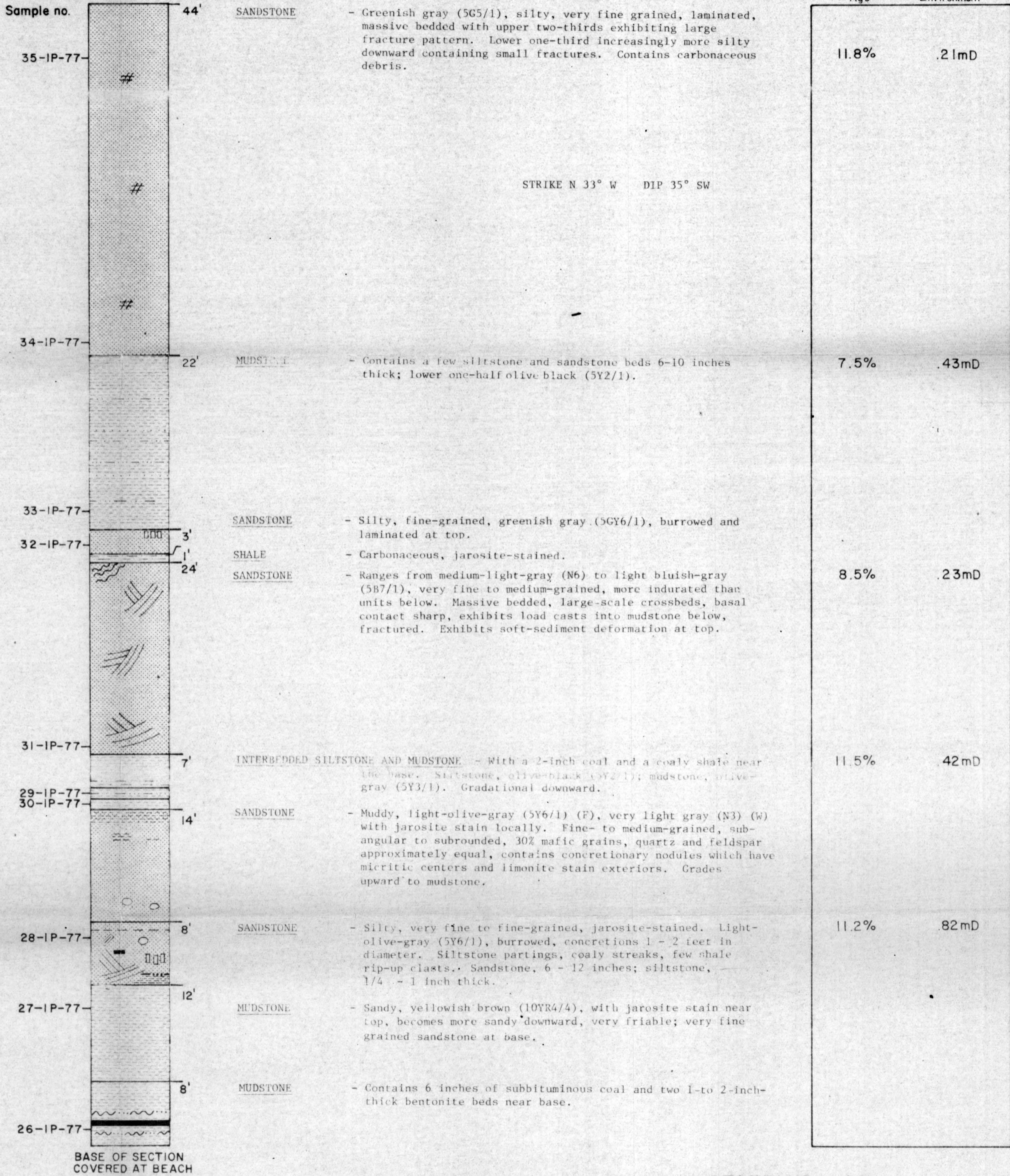
MEASURED BY: I.F. PALMER

J.G. BOLM

W.M. LYLE

SECTION TERMINATES AT FAULT AT BASE OF HEREN STRATIGRAPHIC SECTION NO. II

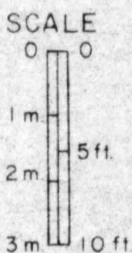
TERTIARY PALEOCENE (?) OR EOCENE (?) SANDSTONE (?)



STRIKE N 33° W DIP 35° SW

BASE OF SECTION COVERED AT BEACH

I. BURK (1965)



STATE OF ALASKA  
DEPT. OF NATURAL RESOURCES  
Div. of Geological & Geophysical Surveys