

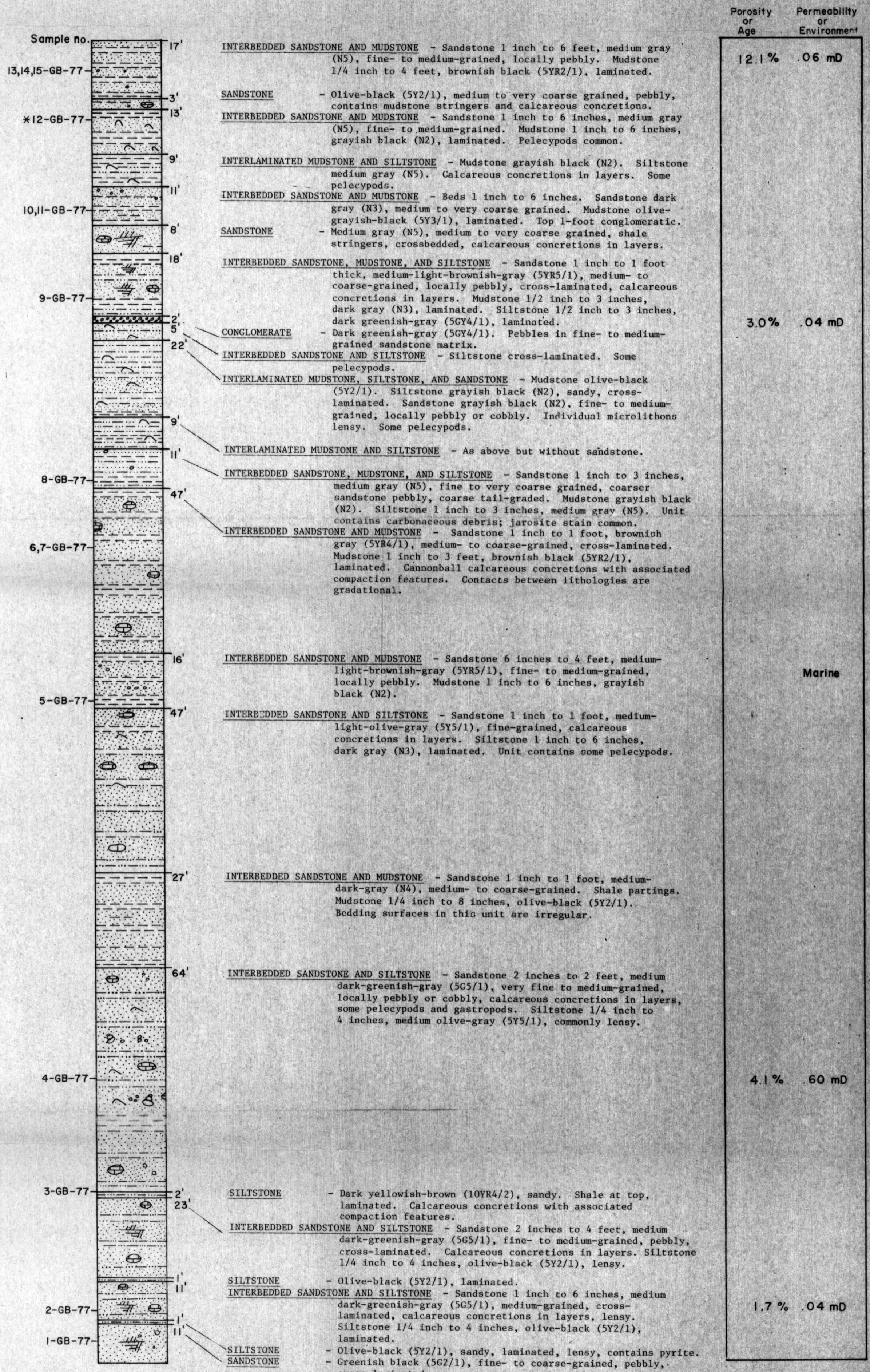
# WATERFALL POINT STRATIGRAPHIC SECTION

Secs 30, 31, T 51 S, R 69 W  
MAP LOCATION NO. 322

JULY 1977

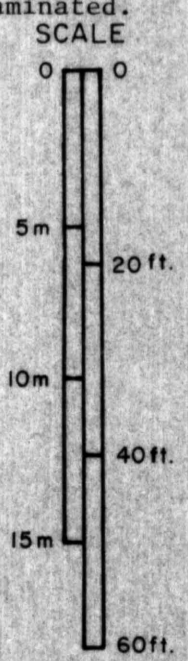
MEASURED BY: J. BOLM  
J. MOREHOUSE

TERRACE



I. BURKE (1965)

\* SEE TABLE 8 FOR IDENTIFICATION OF MACROFOSSILS AND U.S.G.S. CENOZOIC LOCALITY NUMBER.



STATE OF ALASKA  
DEPT. OF NATURAL RESOURCES  
Div. of Geological & Geophysical Surveys