

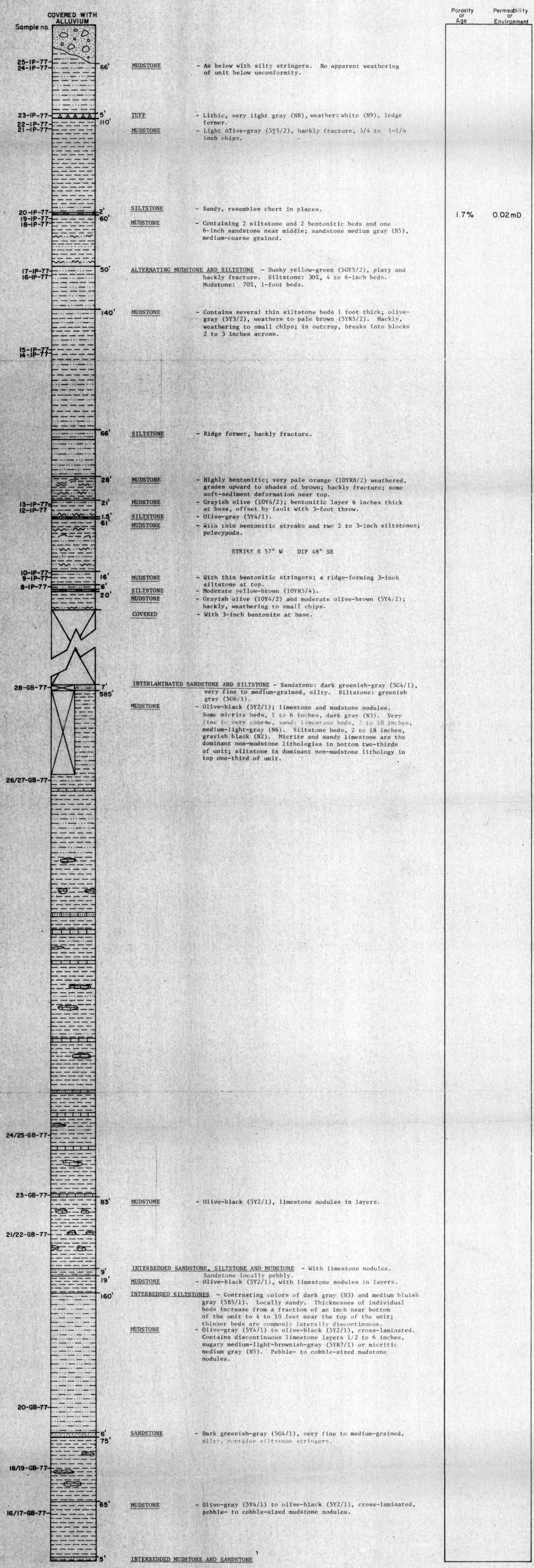
LEFTHAND BAY-BALBOA BAY STRATIGRAPHIC SECTION

Sec. 29, T. 53 S., R. 73 W.
MAP LOCATION NO. 369

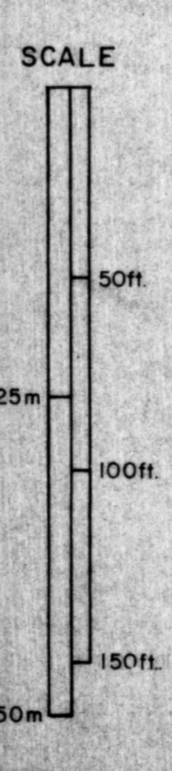
MEASURED BY: W. LYLE
I. PALMER
J. BOLM
J. MOREHOUSE

JUNE 1977

Y
R
A
E
N
M
I
C
K
O
V
O
P
O
S
T
E
L
S
T
E
R
E
T
O
G
R
A
P
H
Y



I. BURKE (1965)



STATE OF ALASKA
DEPT. OF NATURAL RESOURCES
Div. of Geological & Geophysical Surveys