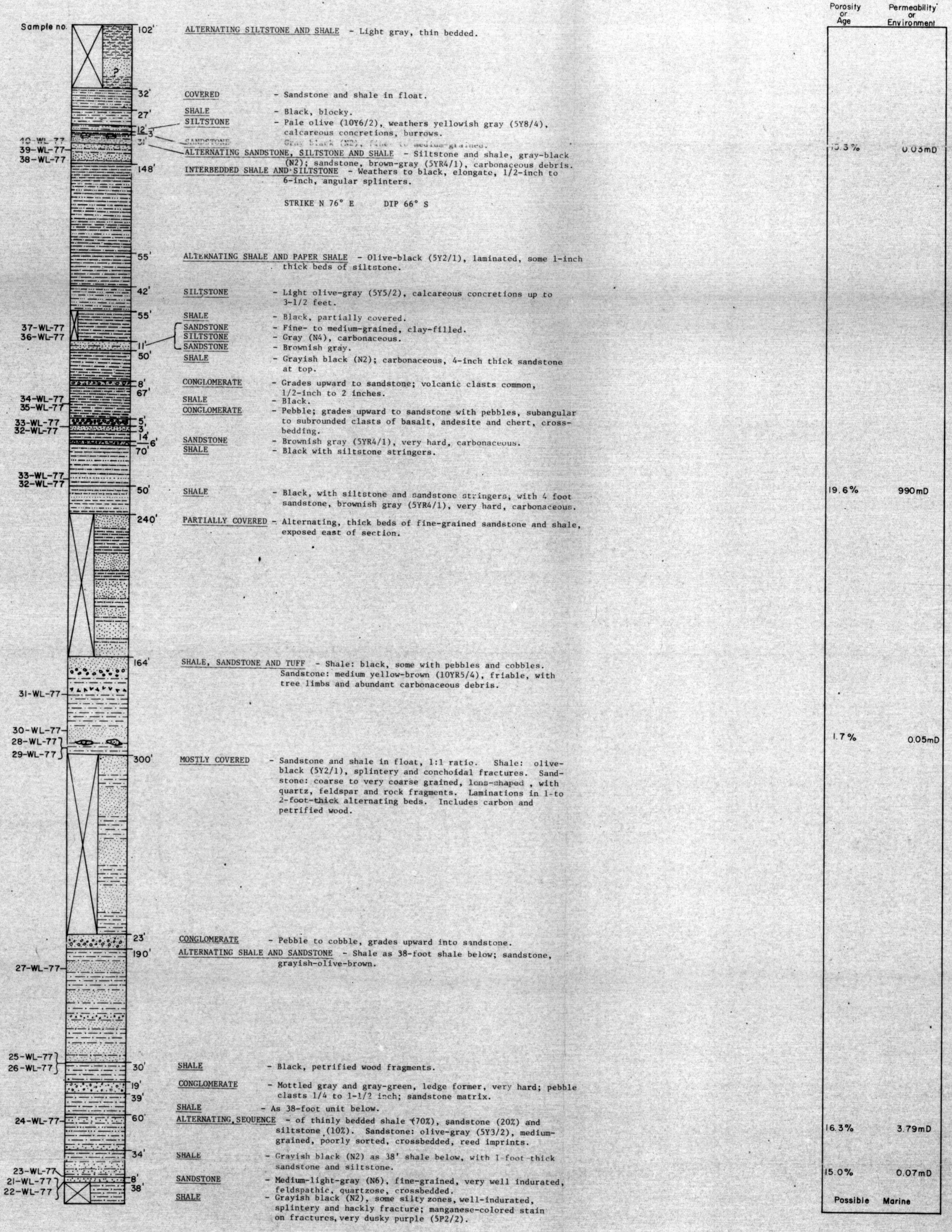


BEAVER BAY STRATIGRAPHIC SECTION Secs. 13, 14, 24, T. 54 S., R. 77 W. MAP LOCATION NO. 377

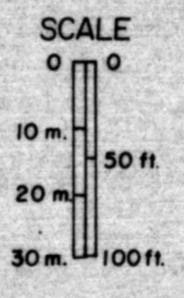
JULY 1977

MEASURED BY: I.F. PALMER
W.M. LYLE

TERTIARY
S T E P O V A K
O L I G O C E N E
F O R M A T I O N I



I. BURKE (1965)



STATE OF ALASKA
DEPT. OF NATURAL RESOURCES
Div. of Geological & Geophysical Surveys