

ALIAKSIN PENINSULA

STRATIGRAPHIC SECTION

Sec. 18, T. 54 S., R. 75 W.

MAP LOCATION NO. 382

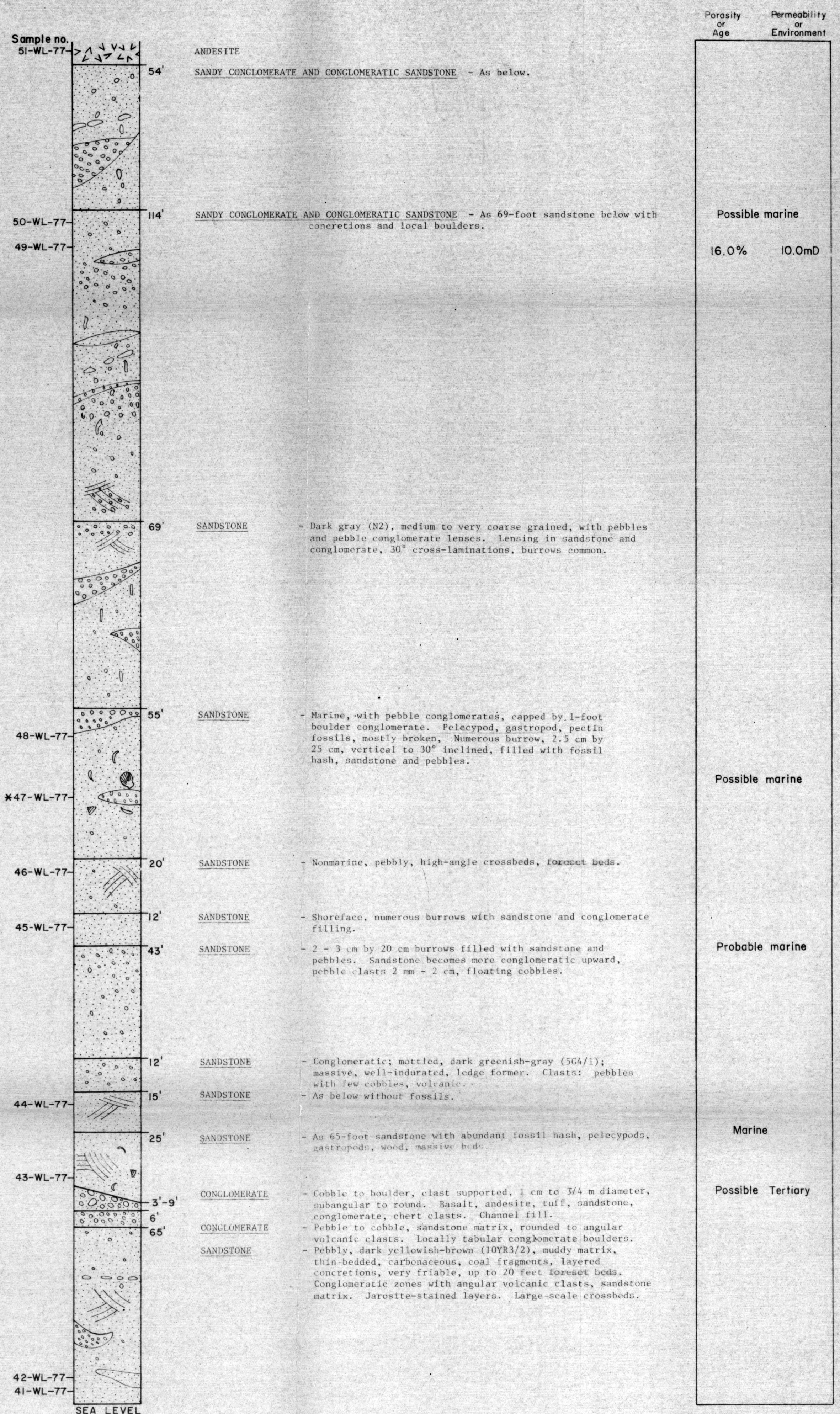
MEASURED BY: W.M. LYLE

I.F. PALMER

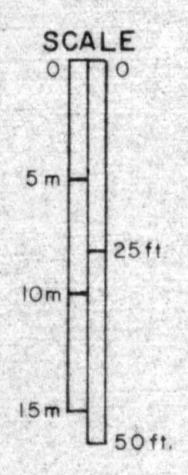
J.G. BOLM

JULY 1977

TERTIARY
 MIOCENE
 BEAR LAKE FORMATION - UNGA CONGLOMERATE MEMBER



* SEE TABLE 8 FOR IDENTIFICATION OF MACROFOSSILS AND USGS CENOZOIC LOCALITY NUMBER



STATE OF ALASKA
 DEPT. OF NATURAL RESOURCES
 Div. of Geological & Geophysical Surveys