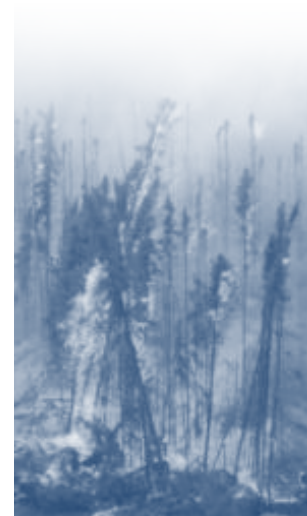




State of ALASKA

Department of Natural Resources



2012 Strategic and Critical Minerals Summit

Access to our Land and Resources

Deputy Commissioner Ed Fogels
Alaska Department of Natural Resources
www.dnr.alaska.gov

STATE *of* ALASKA

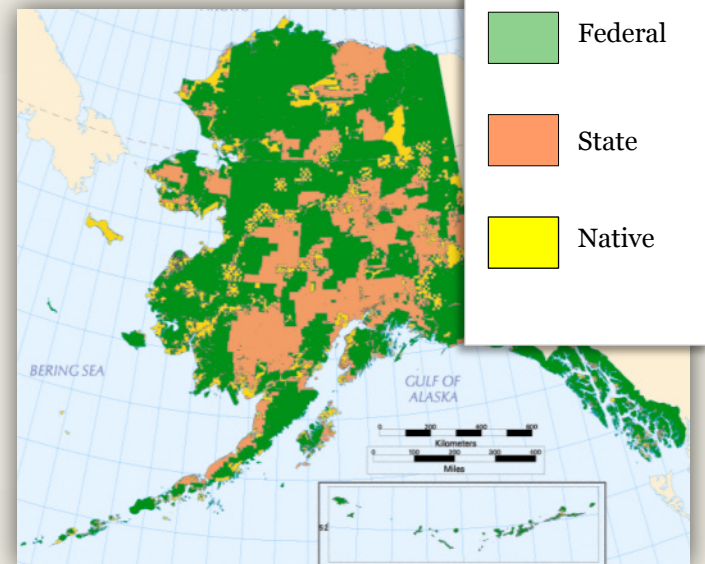


Land Base

- 586,412 square miles—more than twice the size of Texas
- Is larger than all but 18 sovereign nations
- Has more coastline than all other U.S. states combined
- Has more than 3 million lakes and half of the world's glaciers
- Has 40% of the nation's freshwater
- Has 63% of the nation's wetlands
- Is the least densely populated U.S. state

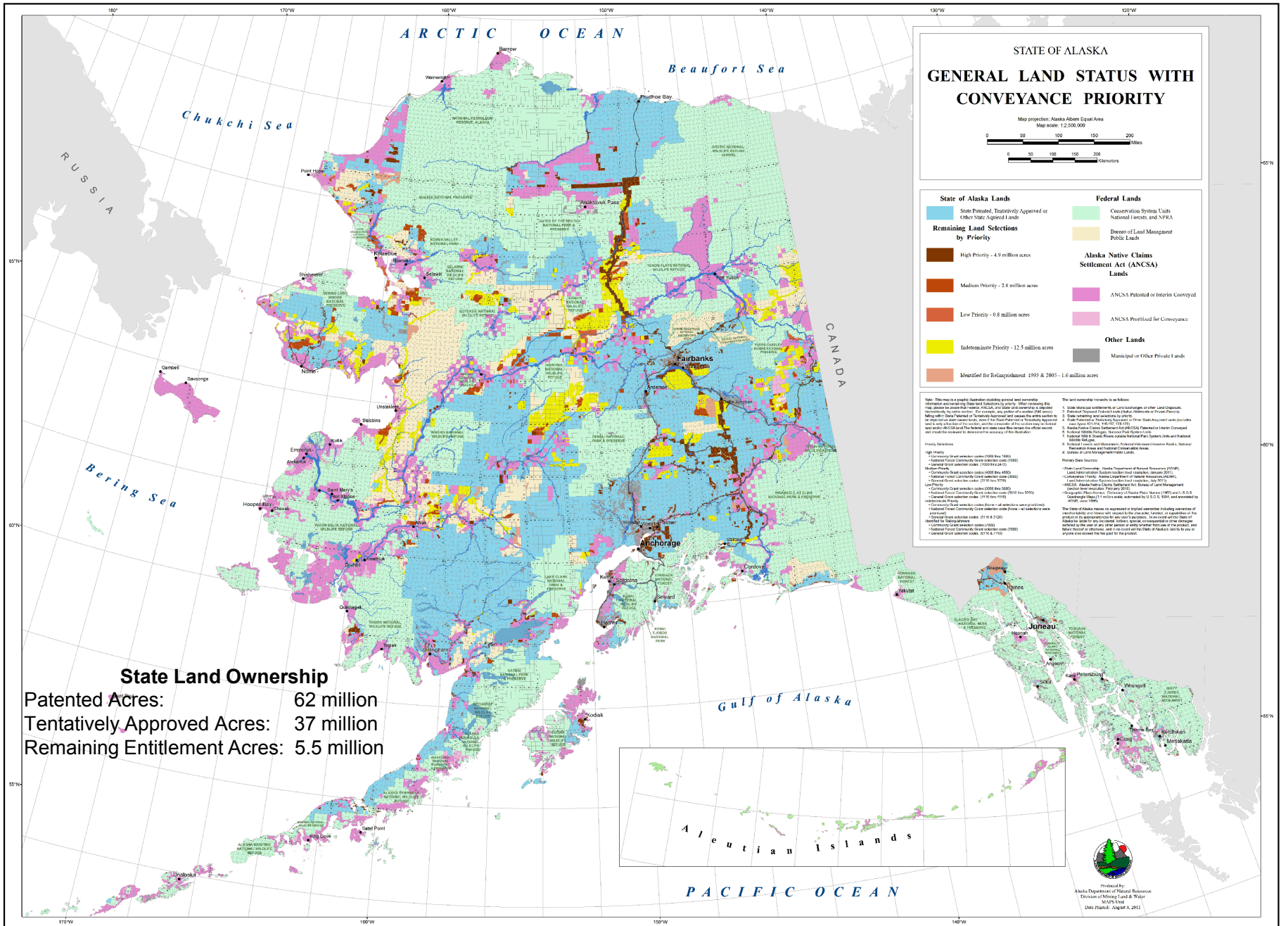
Land Ownership

- *Federal Land (60%)*: more than 200 million acres
- *State Land (27%)*: Approx. 100 million acres of uplands, 60 million acres of tidelands, shore lands, and submerged lands, and 40,000 miles of coastline
- *Native Corporation Land (12%)*: 44 million acres



Big Mapping Target!

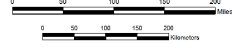




STATE OF ALASKA
**GENERAL LAND STATUS WITH
 CONVEYANCE PRIORITY**

Map projection: Alaska Albers Equal Area

Map scale: 1:2,500,000



State of Alaska Lands

State Patented, Tentatively Approved or
 Other State Acquired Lands

Remaining Land Selections
 by Priority

High Priority - 4.9 million acres

Medium Priority - 2.8 million acres

Low Priority - 0.8 million acres

Indeterminate Priority - 12.5 million acres

Identified for Relinquishment 1993 & 2005 - 1.6 million acres

Federal Lands

Conservation System Units,
 National Forests, and NPSA

Division of Land Management
 Public Lands

**Alaska Native Claims
 Settlement Act (ANCSA)
 Lands**

ANCSA Patented or Retiered Conveyed

ANCSA Prioritized for Conveyance

Other Lands

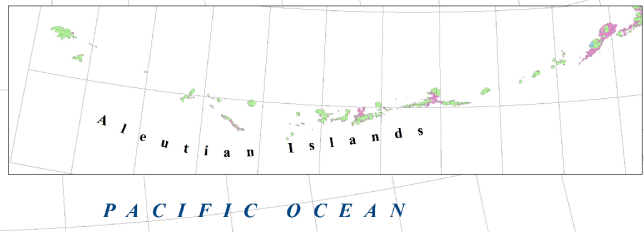
Municipal or Office Private Lands

Note: This map is a general depiction illustrating general and approximate
 information and remaining State land selections by priority. Further detailing this
 map shows the various land selection categories and their relative priority for conveyance.

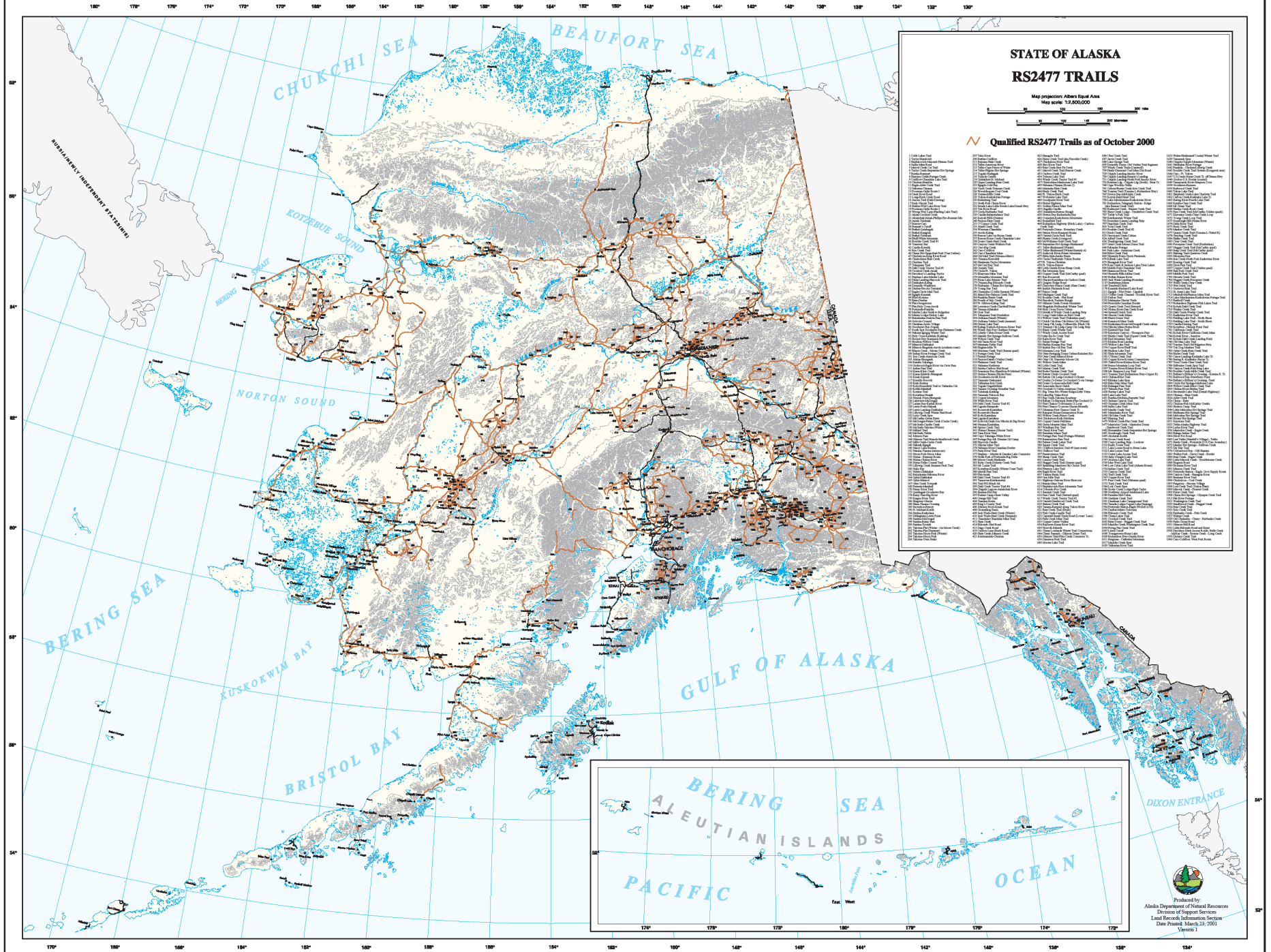
The land ownership consists of the following:

- State Patented, Tentatively Approved or Other State Acquired Lands
- Remaining Land Selections by Priority
- Conservation System Units, National Forests, and NPSA
- Division of Land Management Public Lands
- ANCSA Patented or Retiered Conveyed
- ANCSA Prioritized for Conveyance
- Municipal or Office Private Lands

State Land Ownership
 Patented Acres: 62 million
 Tentatively Approved Acres: 37 million
 Remaining Entitlement Acres: 5.5 million

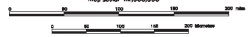


Produced by:
 Alaska Department of Natural Resources
 Division of Mining Land & Water
 ANCSA Task
 Date Plotted: August 6, 2011



**STATE OF ALASKA
RS2477 TRAILS**

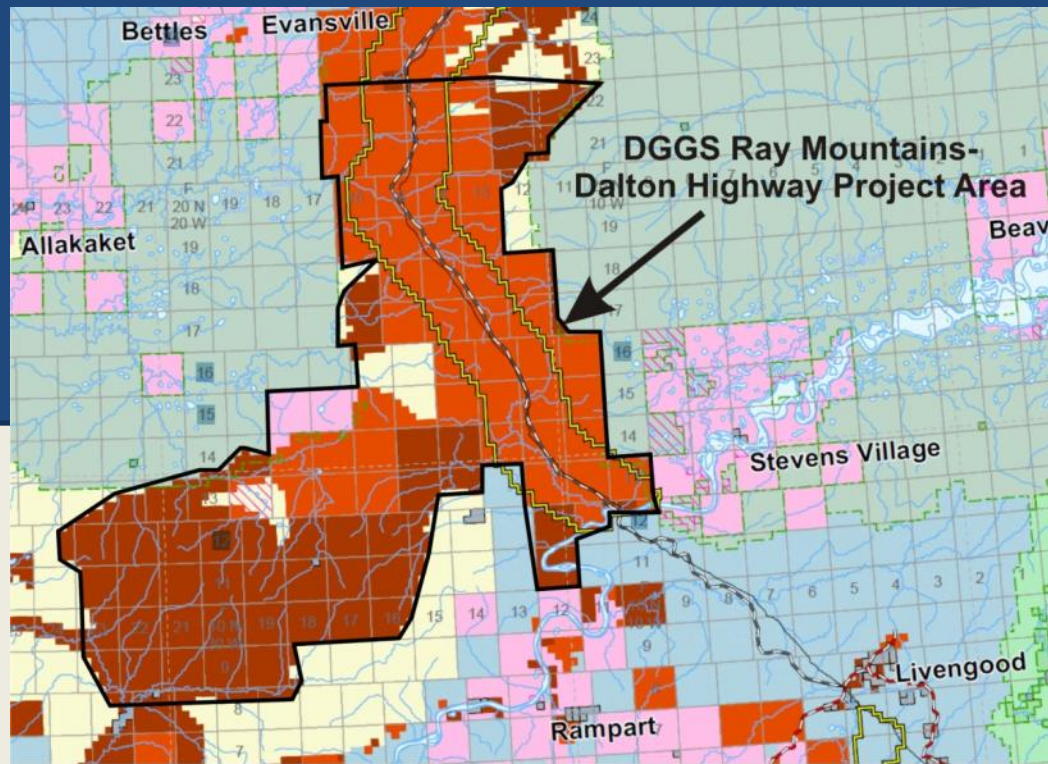
Map projection: Albers Equal Area
Map scale: 1:500,000



Qualified RS2477 Trails as of October 2000

Trail Name	Trail Name	Trail Name	Trail Name
101 Mile Trail	102 Mile Trail	103 Mile Trail	104 Mile Trail
105 Mile Trail	106 Mile Trail	107 Mile Trail	108 Mile Trail
109 Mile Trail	110 Mile Trail	111 Mile Trail	112 Mile Trail
113 Mile Trail	114 Mile Trail	115 Mile Trail	116 Mile Trail
117 Mile Trail	118 Mile Trail	119 Mile Trail	120 Mile Trail
121 Mile Trail	122 Mile Trail	123 Mile Trail	124 Mile Trail
125 Mile Trail	126 Mile Trail	127 Mile Trail	128 Mile Trail
129 Mile Trail	130 Mile Trail	131 Mile Trail	132 Mile Trail
133 Mile Trail	134 Mile Trail	135 Mile Trail	136 Mile Trail
137 Mile Trail	138 Mile Trail	139 Mile Trail	140 Mile Trail
141 Mile Trail	142 Mile Trail	143 Mile Trail	144 Mile Trail
145 Mile Trail	146 Mile Trail	147 Mile Trail	148 Mile Trail
149 Mile Trail	150 Mile Trail	151 Mile Trail	152 Mile Trail
153 Mile Trail	154 Mile Trail	155 Mile Trail	156 Mile Trail
157 Mile Trail	158 Mile Trail	159 Mile Trail	160 Mile Trail
161 Mile Trail	162 Mile Trail	163 Mile Trail	164 Mile Trail
165 Mile Trail	166 Mile Trail	167 Mile Trail	168 Mile Trail
169 Mile Trail	170 Mile Trail	171 Mile Trail	172 Mile Trail
173 Mile Trail	174 Mile Trail	175 Mile Trail	176 Mile Trail
177 Mile Trail	178 Mile Trail	179 Mile Trail	180 Mile Trail
181 Mile Trail	182 Mile Trail	183 Mile Trail	184 Mile Trail
185 Mile Trail	186 Mile Trail	187 Mile Trail	188 Mile Trail
189 Mile Trail	190 Mile Trail	191 Mile Trail	192 Mile Trail
193 Mile Trail	194 Mile Trail	195 Mile Trail	196 Mile Trail
197 Mile Trail	198 Mile Trail	199 Mile Trail	200 Mile Trail

PUBLIC LAND ORDER 5150



Alaska State Lands

-  State Patented, Tentatively Approved or Other State Acquired Lands (Land Administration System, July 2012)
-  State Wildlife, Park, Forest, and Other Multiple Use Areas (Land Administration System, July 2012)

Remaining Selections July 2012

-  Selections
-  Topfilings
-  Selections with Topfilings

Other Municipal and Private Lands

-  Municipal or Other Private Parcels (Bureau of Land Management, July 2012) (Land Administration System, July 2012)

Alaska Native Claims

-  ANCSA Selected (Bureau of Land Management, July 2012)
-  ANCSA Patented or Interim Conveyed (Bureau of Land Management, July 2012)

Federal Lands

-  National Forests, Monuments, Recreation and Conservation Areas
-  National Park System and
-  National Wildlife Refuges
-  National Wild and Scenic Rivers Outside National Park System and Outside National Wildlife Refuges
-  National Petroleum Reserve - Alaska (NPRA)
-  Bureau of Land Management Public Lands
-  Major Military



Mapping Alaska

[program overview](#) | [contact info](#)

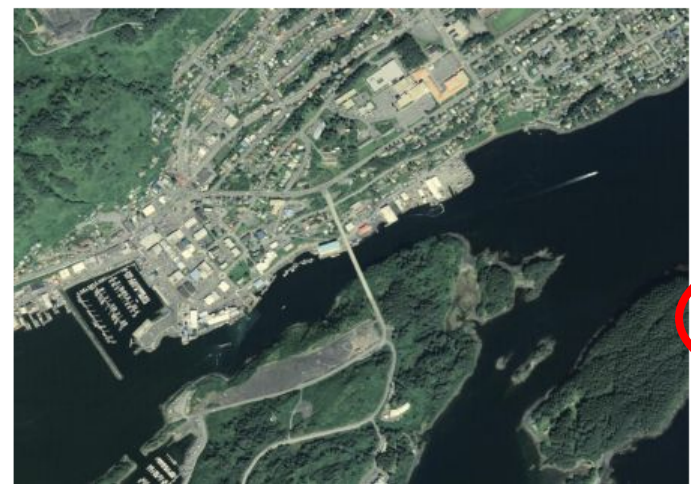
[HOME](#) | [NEWS](#) | [VIEW MAPS](#) | [INVENTORY](#)

Alaska Statewide Digital Mapping Initiative

News: [SDMI web services tutorials released.](#)

The Alaska Statewide Digital Mapping Initiative's primary goal is acquire new and better maps for Alaska and make existing map products more easily available. At this site, you can:

- View existing maps, satellite images, air photos, and elevation data
- Download maps or images to print or use in your mapping software
- View the current inventory of imagery and elevation data for Alaska



Kodiak, Alaska, August 11, 2004, source: USDA-NRCS

The Alaska Statewide Digital Mapping Initiative (SDMI) is strongly committed to making data freely and easily available through open standards. In

Search

Search:

Quick Links

- [Home](#)
- [About the Program](#)

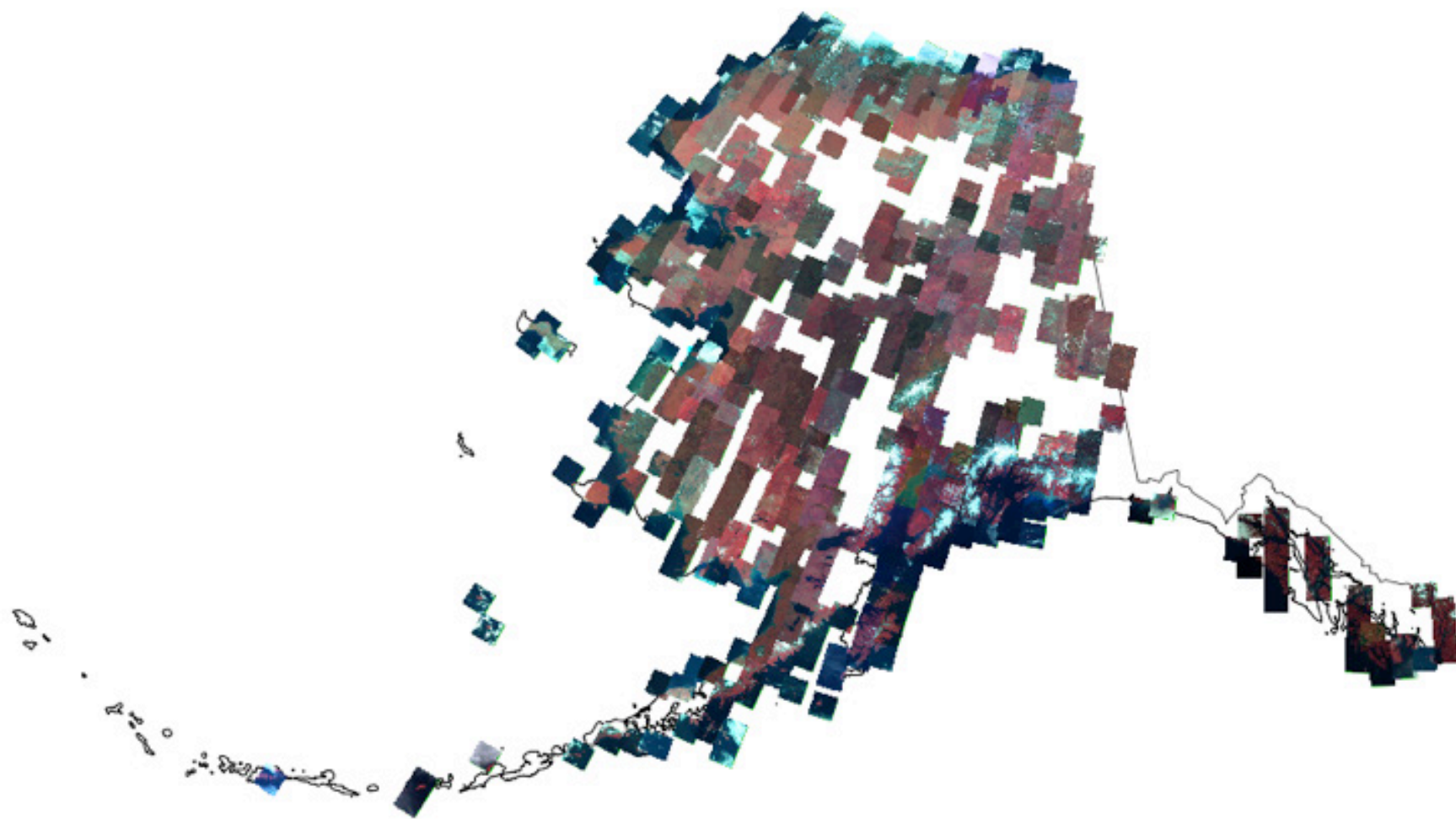
More

Information

- [SDMI Data Ingest](#)
- [News](#)
- [Program Documents](#)



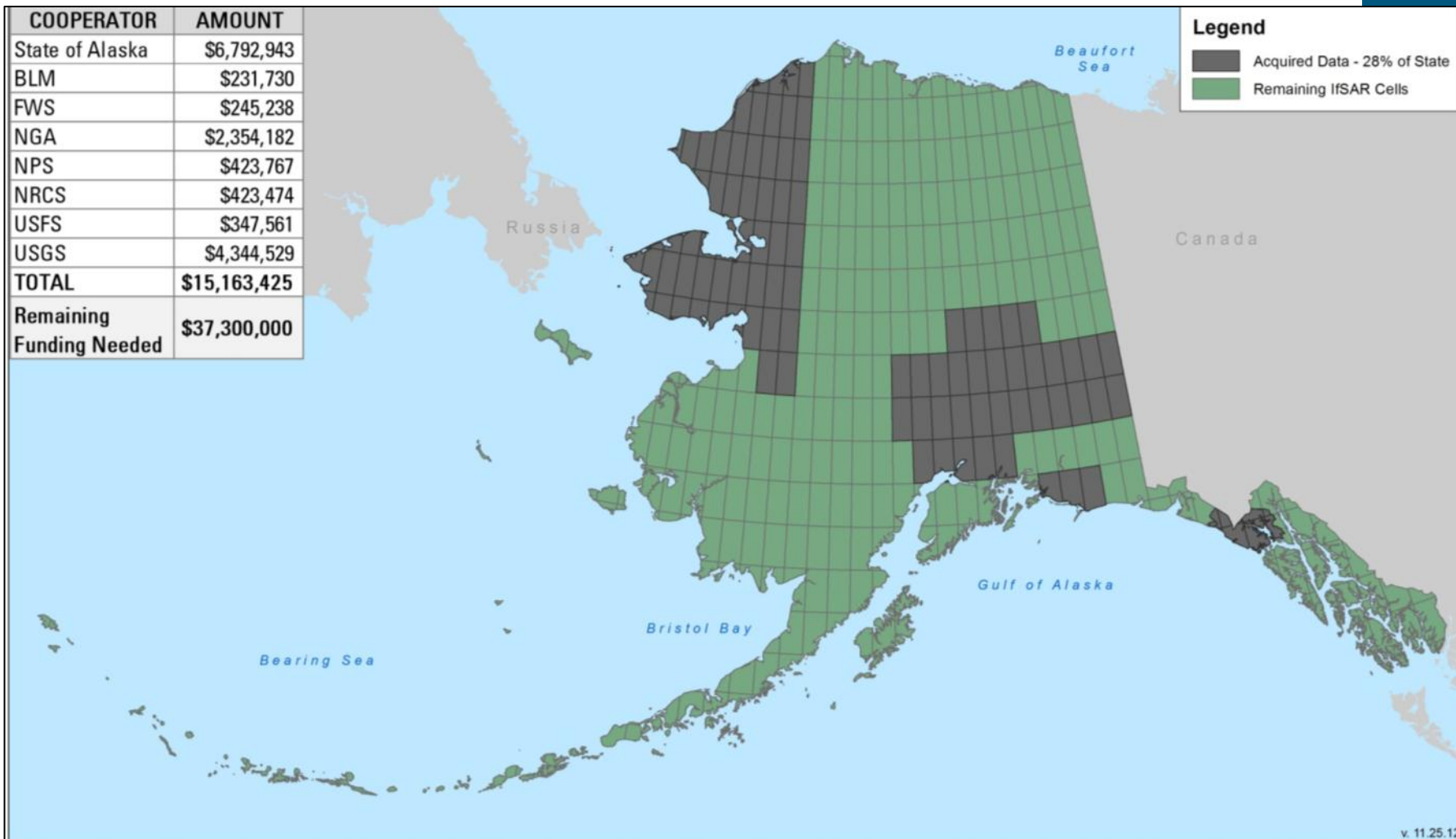
www.alaskamapped.org



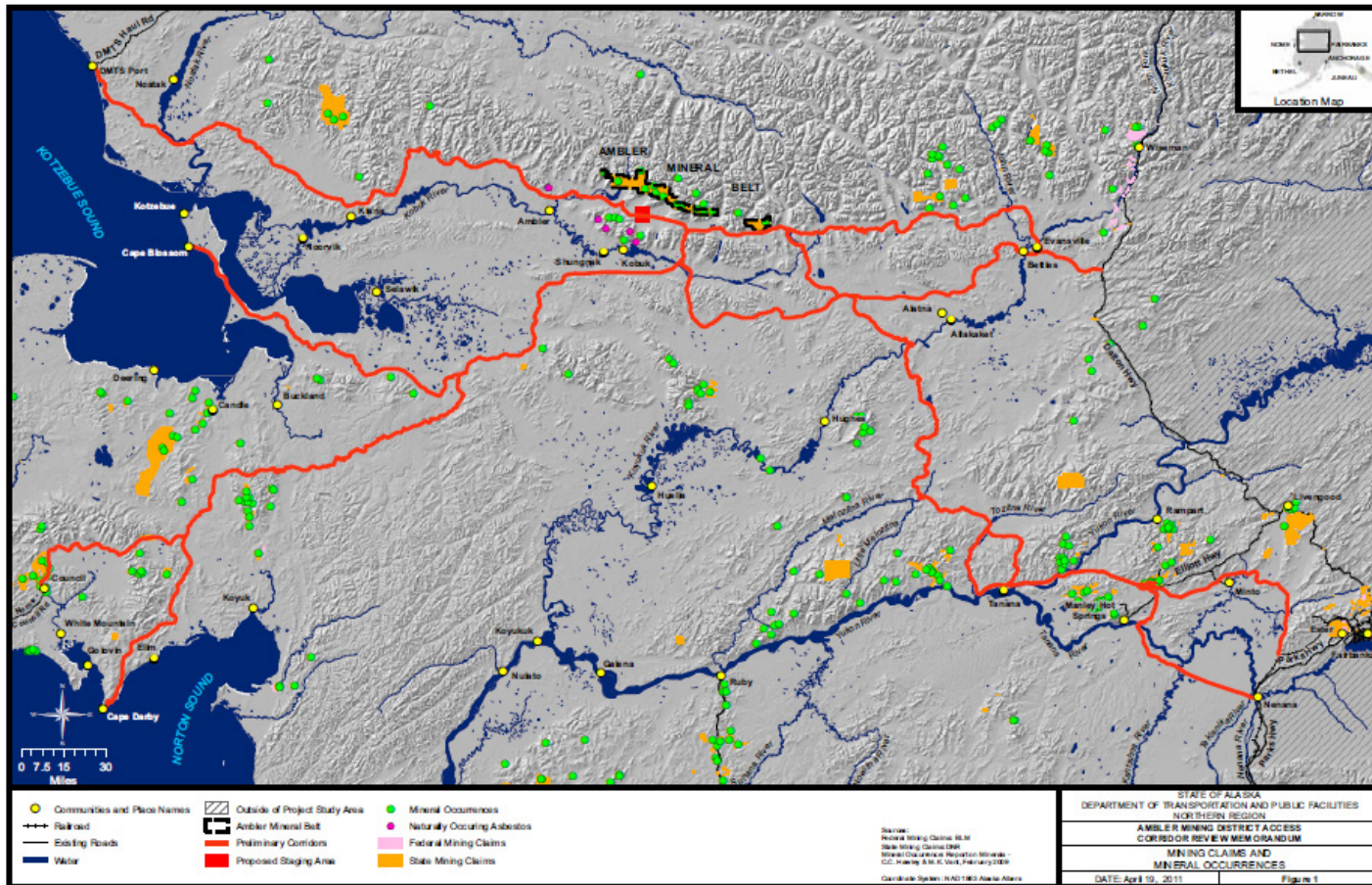
SDMI SPOT5 L1A
source scene mosaic
Nov 12th, 2012



5-Meter IfSAR Acquisition FY10-FY12



ROADS TO RESOURCES: AMBLER MINING DISTRICT ACCESS



ROADS TO RESOURCES: OTHER PROJECTS

- Road to Umiat
- Road to Tanana

ROADS TO RESOURCES: OTHER PROJECTS

- West Susitna Valley Access (gas, timber, and coal)
- Niblack Mine Access- Prince of Wales (Au, Ag, Cu, Zn, Pb)
- Bokan Mtn. Mine Access- Prince of Wales (REE)
- Totchaket Road- Nenana (agriculture/ timber/ potential gas & minerals)
- Granduc Mine- Hyder Salmon Road (Cu)
- Katlian Quarry – Baranof Island
- Marshall Quarry – Yukon River

STATEWIDE PERMITTING REFORM

Objective:

Improve the State of Alaska's permitting processes in order to advance the public interest by ensuring projects are permitted in a timely, predictable and efficient manner while safeguarding the environment.

DNR has been working with a team from DNR, DEC, ADF&G, and LAW to develop and advance strategies that aim to:

- I. Improve agencies' internal permitting structure to create a more efficient, timely, and certain process
- II. Enhance coordination within different state departments and with different entities and stakeholders throughout the state
- III. Seek input from the public about the permitting process including input from municipalities, industry and non-governmental organizations
- IV. Improve coordination between the state and the federal government—federal permitting issues have a strong influence on state projects
- V. Anticipate and plan for permitting the next phases of resource development, e.g. the Shale Oil Task Force



PERMITTING REFORM

- SIGNIFICANT PROGRESS MADE -

- In FY12, the Legislature provided approximately \$2.7 million in operating funds for the Division of Mining, Land & Water to create efficiency, timeliness and certainty in the permitting process
- We are utilizing capital funding from FY12 (\$2.5M for the Unified Permit Project and Document Management) to focus on business management software and services
- In FY13, the Legislature approved the continuation of FY12 operating funds as part of the ongoing base for permitting and an additional \$950.0 to cover increased personnel costs and fill vacant positions focused on permitting
 - FY13 capital budget included \$3.3M to continue work on the Unified Permit Project, including the continuation of IT strategies and Business Process Management
- We have filled 36 new/vacant positions
- We reclassified and updated over 50 position descriptions
- The backlog has been reduced by 34%
- We have conducted public meetings statewide for input on state permitting processes
- We are evaluating internal processes to identify and fix inefficiencies



PERMITTING REFORM

- SIGNIFICANT PROGRESS MADE -

Statutory Changes – HB361

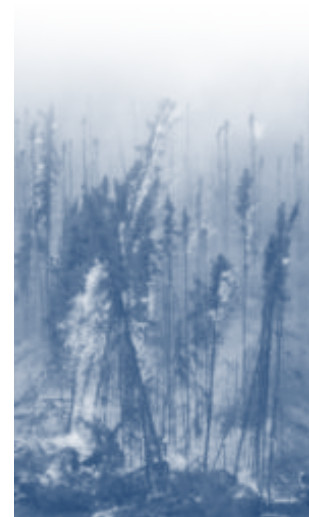
- The Division of Mining, Land and Water has identified over 30 statutory changes that would help reduce applicant costs, create efficiencies, reduce redundancies, and reduce opportunities for legal challenges
- During the 2012 Legislative session, the Governor introduced HB 361, which included the highest priority changes related to leasing and disposal programs that would help reduce the permitting burden on the applicant and free more time for staff to work on processing applications
- The Legislature passed HB 361 and it has been signed by the Governor





State of *ALASKA*

Department of Natural Resources



Thank You!