

AREA MAP INSET 1"=2000'

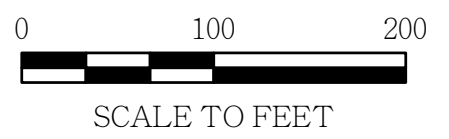
Color-Indexed Community Map HOOPER BAY

DGGS MP 154 version 2

61° 31' 40" N 169° 06' 20" W (NAD83)
Approximate Elevation: 17'
Township 17 North, Range 93 West, S.M., AK
U.S.G.S. Quadrangle "HOOPER BAY (C-3)", Alaska
BETHEL RECORDING DISTRICT

LEGEND

- Residential Building
- Commercial Building
- Public Building
- Electric & Telephone
- Sewer Line
- Water Line
- Fuel Line
- Easement
- City Boundary
- Subdivision Block



SCALE: 1" = 100'
Date of Photography: August 13, 2015
Magnetic Declination computed by U.S.G.S Geomag
*Other boundaries are defined with a text label and not shown in the legend.

SHEET 1 of 3

MAP NOTES

Color-indexed maps were prepared using funding from the Alaska Ocean Observing System, Elevation data and aerial photographs were collected using funding from the Coastal Impact Assistance Program, U.S. Fish and Wildlife Service, U.S. Department of the Interior. The views and conclusions contained in this document are those of the authors and should not be interpreted as representing the opinions or policies of the U.S. Government. Mention of trade names or commercial products does not constitute their endorsement by the U.S. Government.

This map was prepared by Coastal Villages Region Fund (CVRF) in cooperation with the Alaska Department of Commerce, Community, and Economic Development (Commerce) using funding from Commerce, CVRF, Alaska Coastal Management Program, Alaska Village Electric Cooperative Inc., and funding from the Initiative for Accelerated Infrastructure Development (IAID). The IAID is supported with grants from the Denali Commission, USDA Rural Development, Alaska Department of Transportation and Public Facilities and Commerce. Coastal Villages Region Fund contracted with Global Positioning Services Incorporated in May of 2007 to prepare the map. The original AutoCAD drawing has been revised for display in ArcGIS and by the addition of updated aerial photography (2015) and elevation indices.

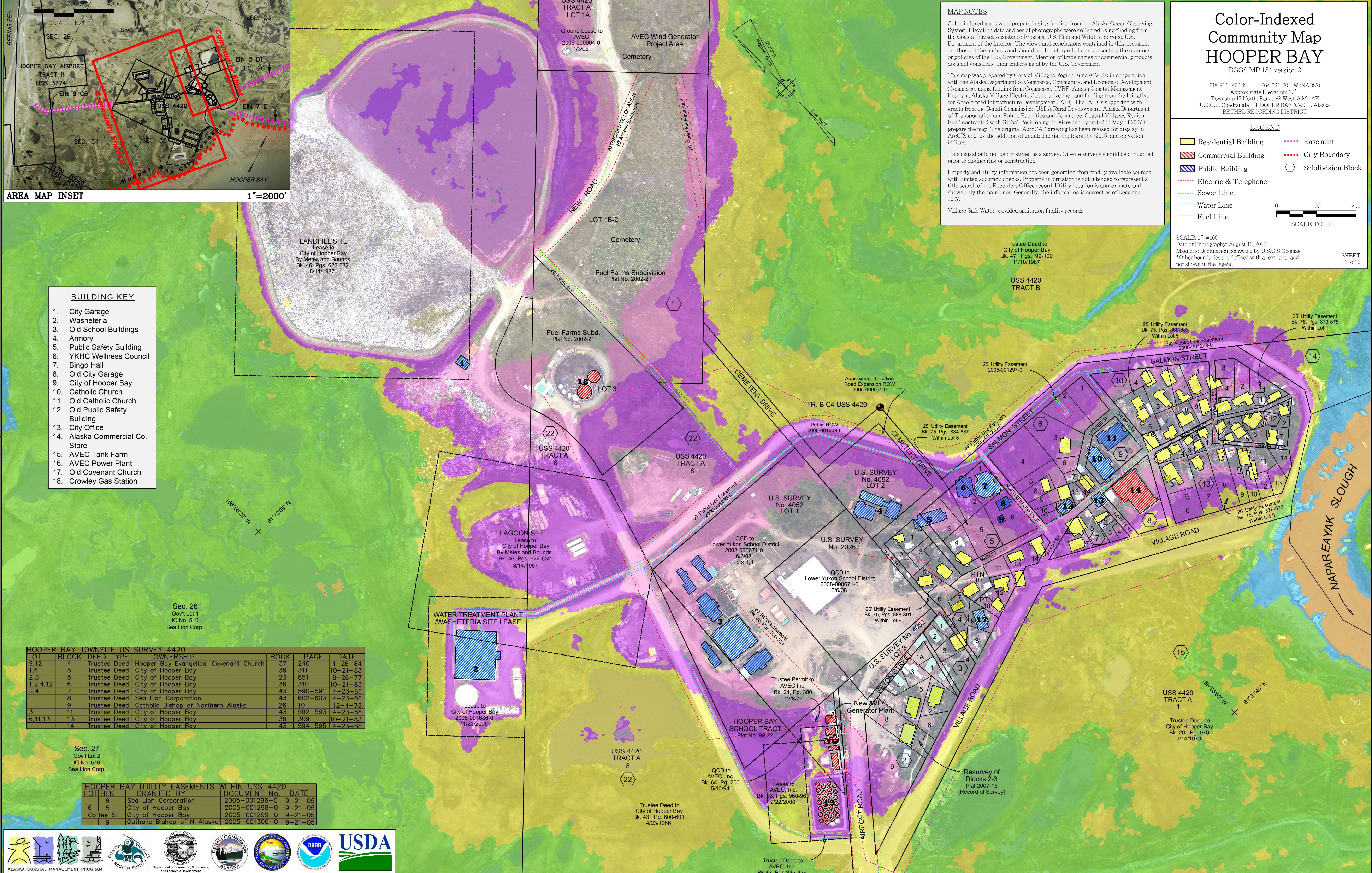
This map should not be construed as a survey. On-site surveys should be conducted prior to engineering or construction.

Property and utility information has been generated from readily available sources with limited accuracy checks. Property information is not intended to represent a title search of the Records Office record. Utility location is approximate and shows only the main lines. Generally, the information is current as of December 2007.

Village Safe Water provided sanitation facility records.

BUILDING KEY

1. City Garage
2. Washeteria
3. Old School Buildings
4. Armory
5. Public Safety Building
6. YKHC Wellness Council
7. Bingo Hall
8. Old City Garage
9. City of Hooper Bay
10. Catholic Church
11. Old Catholic Church
12. Old Public Safety Building
13. City Office
14. Alaska Commercial Co. Store
15. AVEC Tank Farm
16. AVEC Power Plant
17. Old Covenant Church
18. Crowley Gas Station



LOT	BLOCK	DEED TYPE	OWNERSHIP	BOOK	PAGE	DATE
9,12	4	Trustee Deed	Hooper Bay Evangelical Covenant Church	37	240	1-26-84
1,6	5	Trustee Deed	City of Hooper Bay	36	311	10-21-83
2,3	5	Trustee Deed	City of Hooper Bay	23	851	8-26-77
1,2,4,12	6	Trustee Deed	City of Hooper Bay	36	310	10-21-83
2,4	7	Trustee Deed	City of Hooper Bay	43	590-591	4-23-86
8	8	Trustee Deed	Sea Lion Corporation	43	602-603	4-23-86
9	9	Trustee Deed	Catholic Bishop of Northern Alaska	26	10	12-4-78
3	11	Trustee Deed	City of Hooper Bay	43	592-593	4-23-86
6,11,13	13	Trustee Deed	City of Hooper Bay	36	309	10-21-83
14	14	Trustee Deed	City of Hooper Bay	43	594-595	4-23-86

LOT/BLK	GRANTED BY	DOCUMENT NO.	DATE
8	Sea Lion Corporation	2005-001296-0	9-21-05
6	City of Hooper Bay	2005-001298-0	9-21-05
5	City of Hooper Bay	2005-001299-0	9-21-05
9	Catholic Bishop of N. Alaska	2005-001300-0	9-21-05



Elevation intervals on the map are derived from 2015 source data. Temporal changes, human or naturally induced, may have occurred that will cause the elevations depicted on these map figures to no longer represent actual surface conditions.

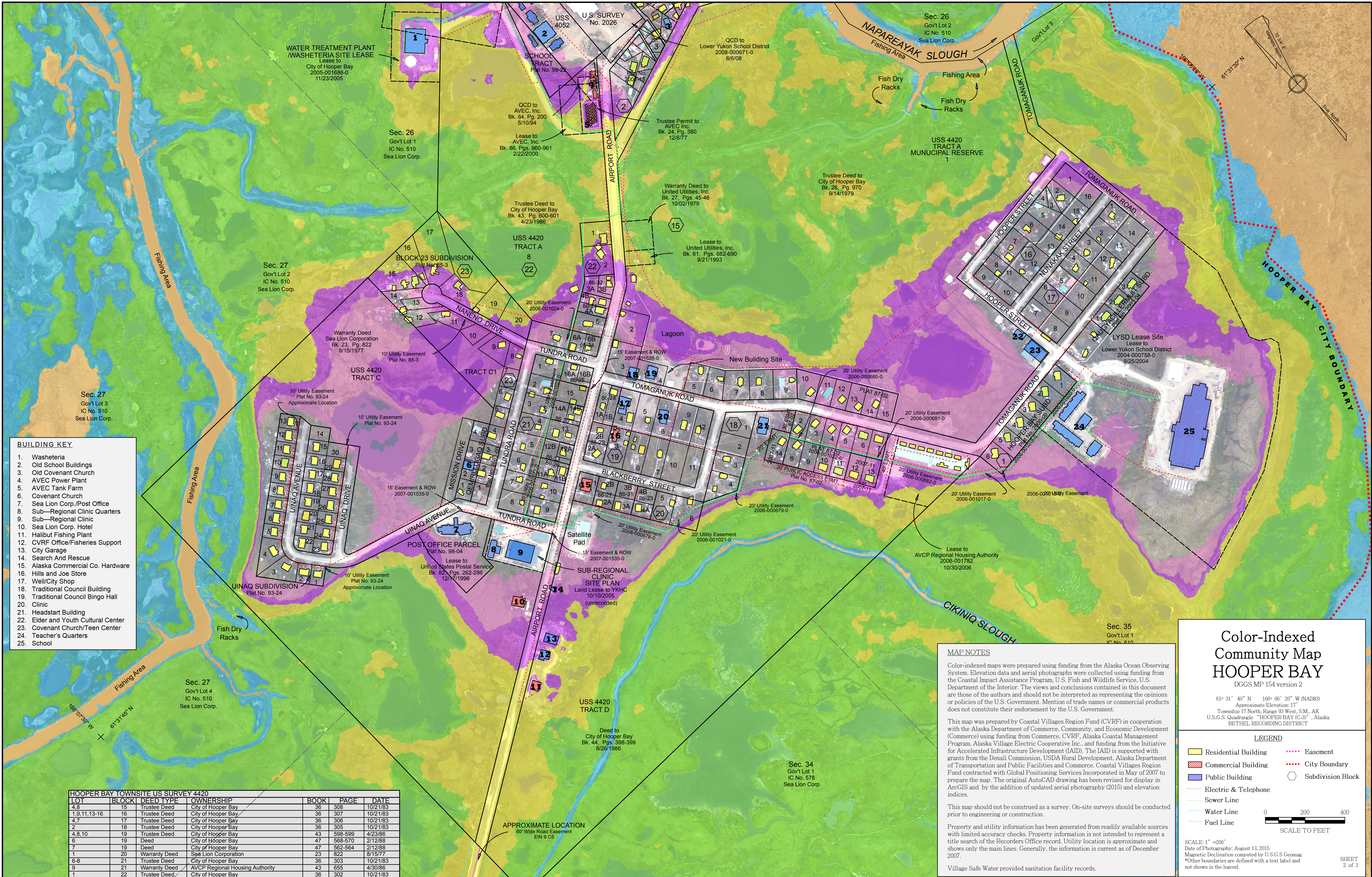
Please note the following disclosures/use limitations:
-These maps illustrate elevation and are not intended for use in the definition of flood zones. Flood levels are not perfectly flat and will not directly correspond to specific elevations.

Vertical and horizontal accuracies vary by location.
-Best available data sets in Alaska are not always up-to-date. Examples: Houses or infrastructure may have moved since DCRA linework was completed, local engineering projects might raise a road or add a seawall, and/or beach and sand spits may have naturally changed shape.
-Colors are restricted to areas of known elevation. In some cases the best available elevation model does not cover the entire DCRA Community Map area.

Elevation Range
Higher Elevation
1 meter
1 meter
0.5 meters
0.5 meters
Lower Elevation
2 meters

Color Key Available as Separate Sheet
Color indices shown to the left define relative vertical elevations. The vertical magnitude for each colored elevation range varies as shown (i.e. orange encompasses a 2-meter range of elevations that are the lowest elevations mapped). For up-to-date numerical elevation values associated with each colored elevation range, see key on a separate sheet MP 154 version 2 'Hooper Bay Numerical Elevation Table'.

COLOR-INDEXED COMMUNITY MAP HOOPER BAY, SHEET 1 1"=100' (2015 PHOTOGRAPHY)



- BUILDING KEY**
1. Washeteria
 2. Old School Buildings
 3. Old Covenant Church
 4. AVEC Power Plant
 5. AVEC Tank Farm
 6. Covenant Church
 7. Sea Lion Corp./Post Office
 8. Sub-Regional Clinic Quarters
 9. Sub-Regional Clinic
 10. Sea Lion Corp. Hotel
 11. Halibut Fishing Plant
 12. CVRF Office/Fisheries Support
 13. City Garage
 14. Search And Rescue
 15. Alaska Commercial Co. Hardware
 16. Hills and Joe Store
 17. Well/Shop
 18. Traditional Council Building
 19. Traditional Council Bingo Hall
 20. Clinic
 21. Headstart Building
 22. Elder and Youth Cultural Center
 23. Covenant Church/Teen Center
 24. Teacher's Quarters
 25. School

HOOPER BAY TOWNSITE US SURVEY 4420

LOT	BLOCK	DEED TYPE	OWNERSHIP	BOOK	PAGE	DATE
4,8	15	Trustee Deed	City of Hooper Bay	36	308	10/21/83
1,9,11,13-16	16	Trustee Deed	City of Hooper Bay	36	307	10/21/83
4,7	17	Trustee Deed	City of Hooper Bay	36	306	10/21/83
2	18	Trustee Deed	City of Hooper Bay	36	305	10/21/83
4,8,10	19	Trustee Deed	City of Hooper Bay	43	598-599	4/23/86
6	19	Deed	City of Hooper Bay	47	568-570	2/12/88
7	19	Deed	City of Hooper Bay	47	562-564	2/12/88
1	20	Warranty Deed	Sea Lion Corporation	23	822	8/15/77
6-8	21	Trustee Deed	City of Hooper Bay	36	303	10/21/83
9	21	Warranty Deed	AVCP Regional Housing Authority	43	655	4/30/86
1	22	Trustee Deed	City of Hooper Bay	36	302	10/21/83

MAP NOTES

Color-indexed maps were prepared using funding from the Alaska Ocean Observing System. Elevation data and aerial photographs were collected using funding from the Coastal Impact Assistance Program, U.S. Fish and Wildlife Service, U.S. Department of the Interior. The views and conclusions contained in this document are those of the authors and should not be interpreted as representing the opinions or policies of the U.S. Government. Mention of trade names or commercial products does not constitute their endorsement by the U.S. Government.

This map was prepared by Coastal Villages Region Fund (CVRF) in cooperation with the Alaska Department of Commerce, Community, and Economic Development (Commerce) using funding from Commerce, CVRF, Alaska Coastal Management Program, Alaska Village Electric Cooperative Inc., and funding from the Initiative for Accelerated Infrastructure Development (AID). The AID is supported with grants from the Denali Commission, USDA Rural Development, Alaska Department of Transportation and Public Facilities and Commerce. Coastal Villages Region Fund contracted with Global Positioning Services Incorporated in May of 2007 to prepare the map. The original AutoCAD drawing has been revised for display in ArcGIS and by the addition of updated aerial photography (2015) and elevation indices.

This map should not be construed as a survey. On-site surveys should be conducted prior to engineering or construction.

Property and utility information has been generated from readily available sources with limited accuracy checks. Property information is not intended to represent a title search of the Records Office record. Utility location is approximate and shows only the main lines. Generally, the information is current as of December 2007.

Village Safe Water provided sanitation facility records.

Color-Indexed Community Map HOOPER BAY
 DGGs MP 154 version 2

61° 31' 40" N 166° 06' 20" W (NAD83)
 Approximate Elevation: 17'
 Township 17 North, Range 93 West, S.M., AK
 U.S.G.S. Quadrangle "HOOPER BAY (C-3)", Alaska
 BETHEL RECORDING DISTRICT

LEGEND

- Residential Building
- Commercial Building
- Public Building
- Electric & Telephone
- Sewer Line
- Water Line
- Fuel Line
- Easement
- City Boundary
- Subdivision Block

SCALE: 1" = 200'
 Date of Photography: August 13, 2015
 Magnetic Declination computed by U.S.G.S Geomag
 *Other boundaries are defined with a text label and not shown in the legend.

SHEET 2 of 3



Elevation intervals on the map are derived from 2015 source data. Temporal changes, human or naturally induced, may have occurred that will cause the elevations depicted on these map figures to no longer represent actual surface conditions.

Please note the following disclosures/use limitations:

- These maps illustrate elevation and are not intended for use in the definition of flood zones. Flood levels are not perfectly flat and will not directly correspond to specific elevations.
- Vertical and horizontal accuracies vary by location.
- Best available data sets in Alaska are not always up-to-date. Examples: Houses or infrastructure may have moved since DCRA linework was completed, local engineering projects might raise a road or add a seawall, and/or beach and sand spits may have naturally changed shape.
- Colors are restricted to areas of known elevation. In some cases the best available elevation model does not cover the entire DCRA Community Map area.

Color Key Available as Separate Sheet

Color indices shown to the left define relative vertical elevations. The vertical magnitude for each colored elevation range varies as shown (i.e. orange encompasses a 2-meter range of elevations that are the lowest elevations mapped). For up-to-date numerical elevation values associated with each colored elevation range, see key on a separate sheet MP 154 version 2 'Hooper Bay Numerical Elevation Table'.

Higher Elevation: 1 meter, 1 meter, 1 meter
 Lower Elevation: 0.5 meters, 0.5 meters, 2 meters

COLOR-INDEXED COMMUNITY MAP HOOPER BAY, SHEET 2 1"=200' (2015 PHOTOGRAPHY)

Legend & Notes

- - - - City Boundary
- - - - Easement
- - - - Berry Picking Area
- - - - Grass Picking Area
- - - - Firewood Gathering Area
- - - - Land Use Area
- - - - Alaska Maritime National Wildlife Refuge Bering Sea Unit

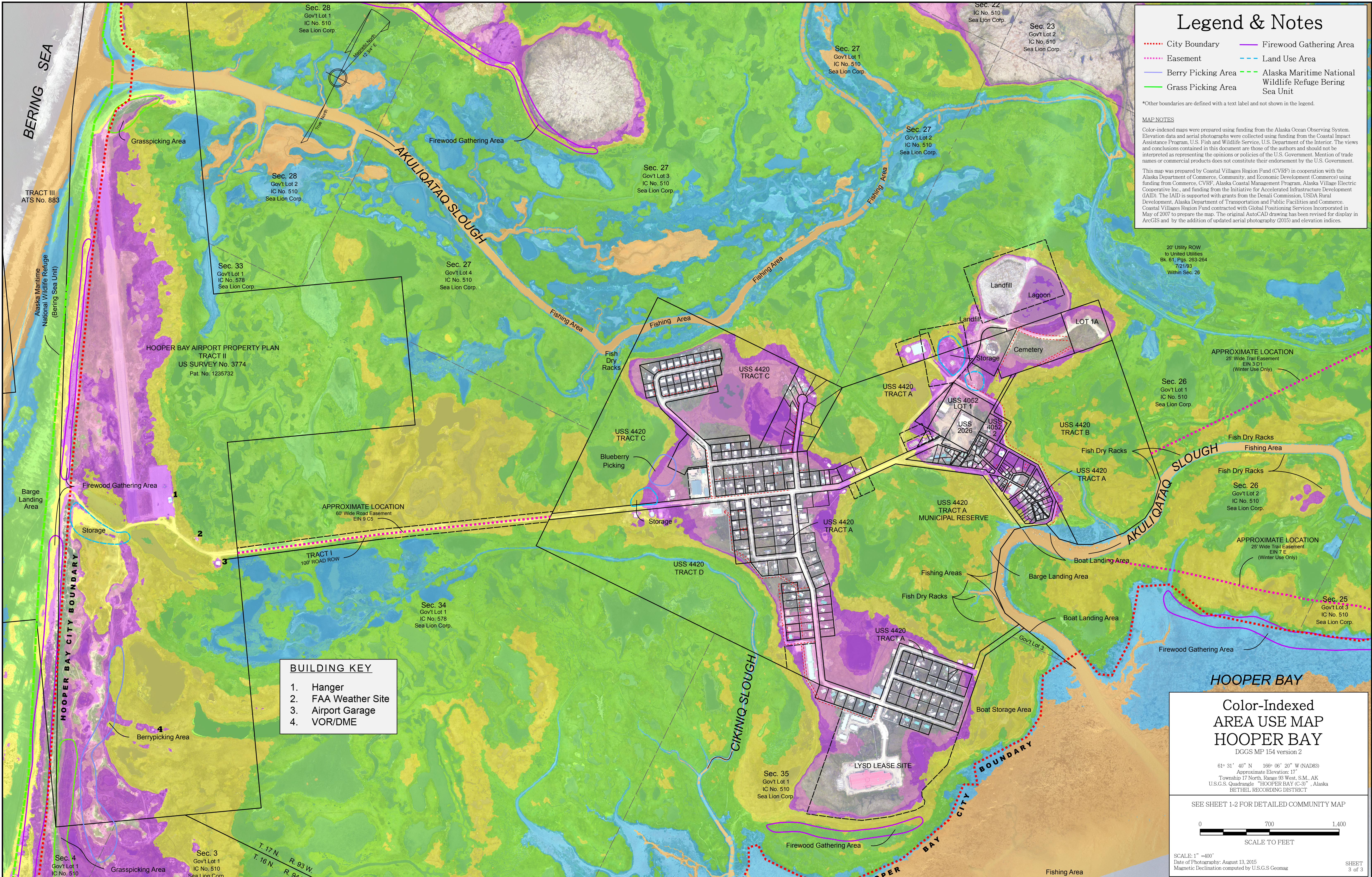
*Other boundaries are defined with a text label and not shown in the legend.

MAP NOTES

Color-indexed maps were prepared using funding from the Alaska Ocean Observing System. Elevation data and aerial photographs were collected using funding from the Coastal Impact Assistance Program, U.S. Fish and Wildlife Service, U.S. Department of the Interior. The views and conclusions contained in this document are those of the authors and should not be interpreted as representing the opinions or policies of the U.S. Government. Mention of trade names or commercial products does not constitute their endorsement by the U.S. Government.

This map was prepared by Coastal Villages Region Fund (CVRP) in cooperation with the Alaska Department of Commerce, Community, and Economic Development (Commerce) using funding from Commerce, CVRP, Alaska Coastal Management Program, Alaska Village Electric Cooperative Inc., and funding from the Initiative for Accelerated Infrastructure Development (IAD). The IAD is supported with grants from the Denali Commission, USDA Rural Development, Alaska Department of Transportation and Public Facilities and Commerce. Coastal Villages Region Fund contracted with Global Positioning Services Incorporated in May of 2007 to prepare the map. The original AutoCAD drawing has been revised for display in ArcGIS and by the addition of updated aerial photography (2015) and elevation indices.

20' Utility ROW to United Utilities Bk. 61, Pgs. 263-264 7/21/93 Within Sec. 26



BUILDING KEY

1. Hanger
2. FAA Weather Site
3. Airport Garage
4. VOR/DME

Color-Indexed AREA USE MAP HOOPER BAY
 DGGS MP 154 version 2
 61° 31' 40" N 166° 06' 20" W (NAD83)
 Approximate Elevation: 17'
 Township 17 North, Range 93 West, S.M., AK
 U.S.G.S. Quadrangle "HOOPER BAY (C-3)", Alaska
 BETHEL RECORDING DISTRICT

SEE SHEET 1-2 FOR DETAILED COMMUNITY MAP



SCALE: 1" = 400'
 Date of Photography: August 13, 2015
 Magnetic Declination computed by U.S.G.S. Geomag

COLOR-INDEXED AREA USE MAP HOOPER BAY, SHEET 3 1"=400' (2015 PHOTOGRAPHY)



Elevation intervals on the map are derived from 2015 source data. Temporal changes, human or naturally induced, may have occurred that will cause the elevations depicted on these map figures to no longer represent actual surface conditions.

Please note the following disclosures/use limitations:

- These maps illustrate elevation and are not intended for use in the definition of flood zones. Flood levels are not perfectly flat and will not directly correspond to specific elevations.

-Vertical and horizontal accuracies vary by location.
 -Best available data sets in Alaska are not always up-to-date. Examples: Houses or infrastructure may have moved since DCRA line work was completed, local engineering projects might raise a road or add a seawall, and/or beach and sand spits may have naturally changed shape.
 -Colors are restricted to areas of known elevation. In some cases the best available elevation model does not cover the entire DCRA Community Map area.

Elevation	Elevation Range
Higher Elevation	1 meter
	1 meter
	1 meter
	0.5 meters
Lower Elevation	0.5 meters
	2 meters

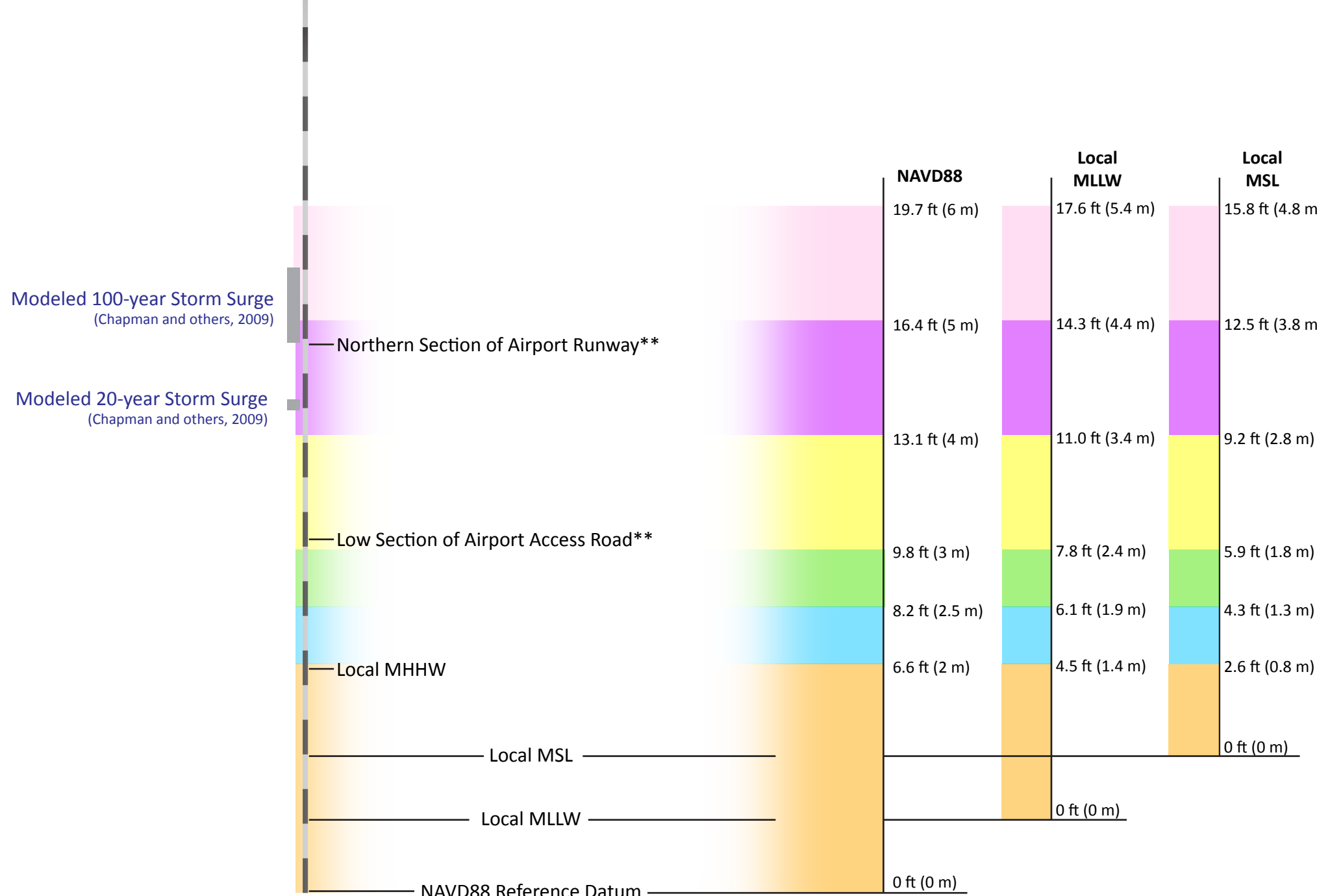
Color Key Available as Separate Sheet

Color indices shown to the left define relative vertical elevations. The vertical magnitude for each colored elevation range varies as shown (i.e. orange encompasses a 2-meter range of elevations that are the lowest elevations mapped). For up-to-date numerical elevation values associated with each colored elevation range, see key on a separate sheet MP 154 version 2 'Hooper Bay Numerical Elevation Table'.

Modeled/Calculated Water Levels

Measured Water Levels & Significant Elevations

Color-Indexed Map Ranges



*Tide Staff
(marked in intervals of feet)*

* Flooding from storms also reported for 1979, 2005, and 2006
**Elevation derived from 2015 digital surface model