

QUINHAGAK Color-Indexed Community Map

DGGS MP 154 version 3

59° 45' 17" N 161° 53' 05" W (NAD83)
Townships 4 & 5 South, Ranges 73 & 74 West, S.M., AK
U.S.G.S. Quadrangles "GOODNEWS BAY C-8 and D-8", Alaska
BETHEL RECORDING DISTRICT

- Lot or Subdivision
- Fuel Line
- Commercial
- Easement
- Sewer Line
- Public
- City Boundary
- Telephone Line
- Residential
- Fish Drying Area
- Water Line
- Electric Line

0 100 200 300
FEET

SHEET
1 of 3

Color-indexed maps were prepared using funding from Alaska Ocean Observing System. Elevation data and aerial photographs were collected using funding from the Coastal Impact Assistance Program, U.S. Fish & Wildlife Service, and the U.S. Department of Interior. The views and conclusions contained in this document are those of the authors and should not be interpreted as representing the opinions and policies of the U.S. Government. Mention of trademarks or commercial products does not constitute their endorsement by the U.S. Government.

Layers of this map were prepared by the Coastal Villages Region Fund in cooperation with the Alaska Department of Commerce, Community, and Economic Development using funding from Housing and Urban Development, the Alaska Native Tribal Health Consortium, City of Quinhagak, and funding from the Initiative for Accelerated Infrastructure Development (IAID). The IAID is supported by grants from the Denali Commission, USDA Rural Development, Alaska Department of Transportation and Public Facilities and Commerce. The Coastal Villages Fund contracted with Global Positioning Services, Inc. in May of 2004 to prepare this map. The original AutoCAD drawing has been revised for display in ArcGIS and by the addition of updated aerial photography (2015) and elevation indices.

This map should not be construed as a survey. On site surveys should be conducted prior to engineering or construction. This map was compiled to meet horizontal and vertical accuracy in accordance with the national map accuracy standards.

Property and utility information has been generated from readily available sources with limited accuracy checks. Property information is not intended to represent a title search of the Records Office records. Utility location is approximate and shows only the main lines as the service lines have been omitted for clarity. Generally, the information in current as of October 2004.

- BUILDING KEY**
- | | |
|---------------------------------|--|
| 1. CVRF Bunkhouse Units | 21. Qarirtuq Shop |
| 2. CVRF Fish Plant | 22. Qarirtuq Hardware Store |
| 3. CVRF Office | 23. Qarirtuq Lumber Store |
| 4. CVRF Freezer House | 24. A&C Market |
| 5. CVRF Storage Building | 25. City Rental House |
| 6. AVEC Plant & Storage | 26. Police Station |
| 7. Moravian Church Rental Units | 27. Water Treatment Plant |
| 8. City Tank Farms | 28. United Utilities, Inc. |
| 9. Headstart Building | 29. Fire Station - Vacant |
| 10. Washeteria/Clinic | 30. Vacant Shop Buildings |
| 11. NVK Rental House | 31. Alaska Army National Guard Buildings |
| 12. Old BIA School - Vacant | 32. LKSD School, Storage, Shop & Warehouse |
| 13. Teacher Housing Units | 33. City Shop Buildings |
| 14. NVK Building/Post Office | 34. Vacant Warehouse Buildings |
| 15. Moravian Parsonage | |
| 16. Video Mania | |
| 17. Moravian Church | |
| 18. Bingo Hall | |
| 19. Qarirtuq Warehouse | |
| 20. Qarirtuq Store | |

Elevation intervals on the map are derived from 2015 source data. Temporal changes, human or naturally induced, may have occurred that will cause the elevations depicted on these map figures to no longer represent actual surface conditions.

Please note the following disclosures/use limitations:

-These maps illustrate elevation and are not intended for use in the definition of flood zones. Flood levels are not perfectly flat and will not directly correspond to specific elevations.

-Vertical and horizontal accuracies vary by location.

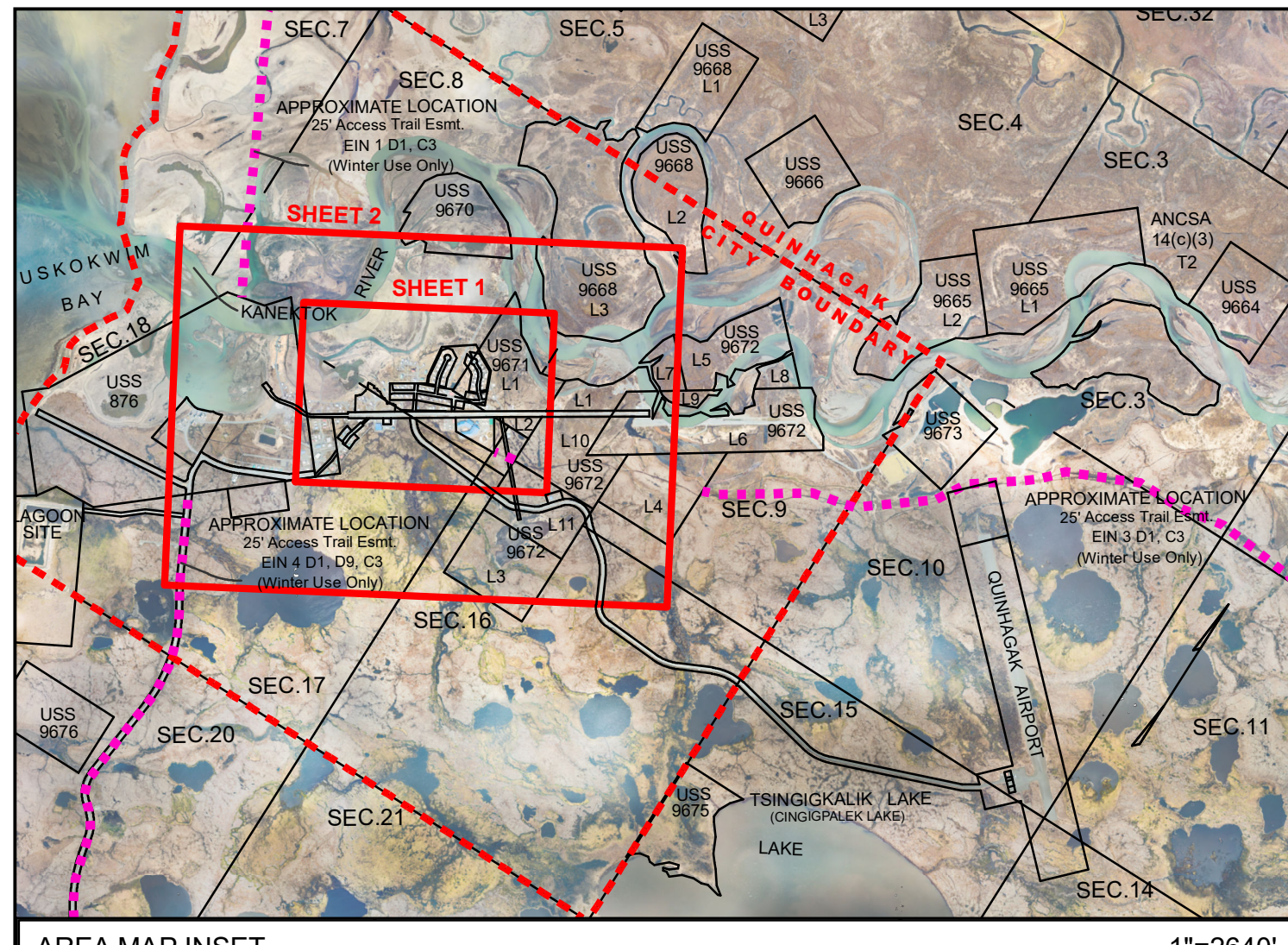
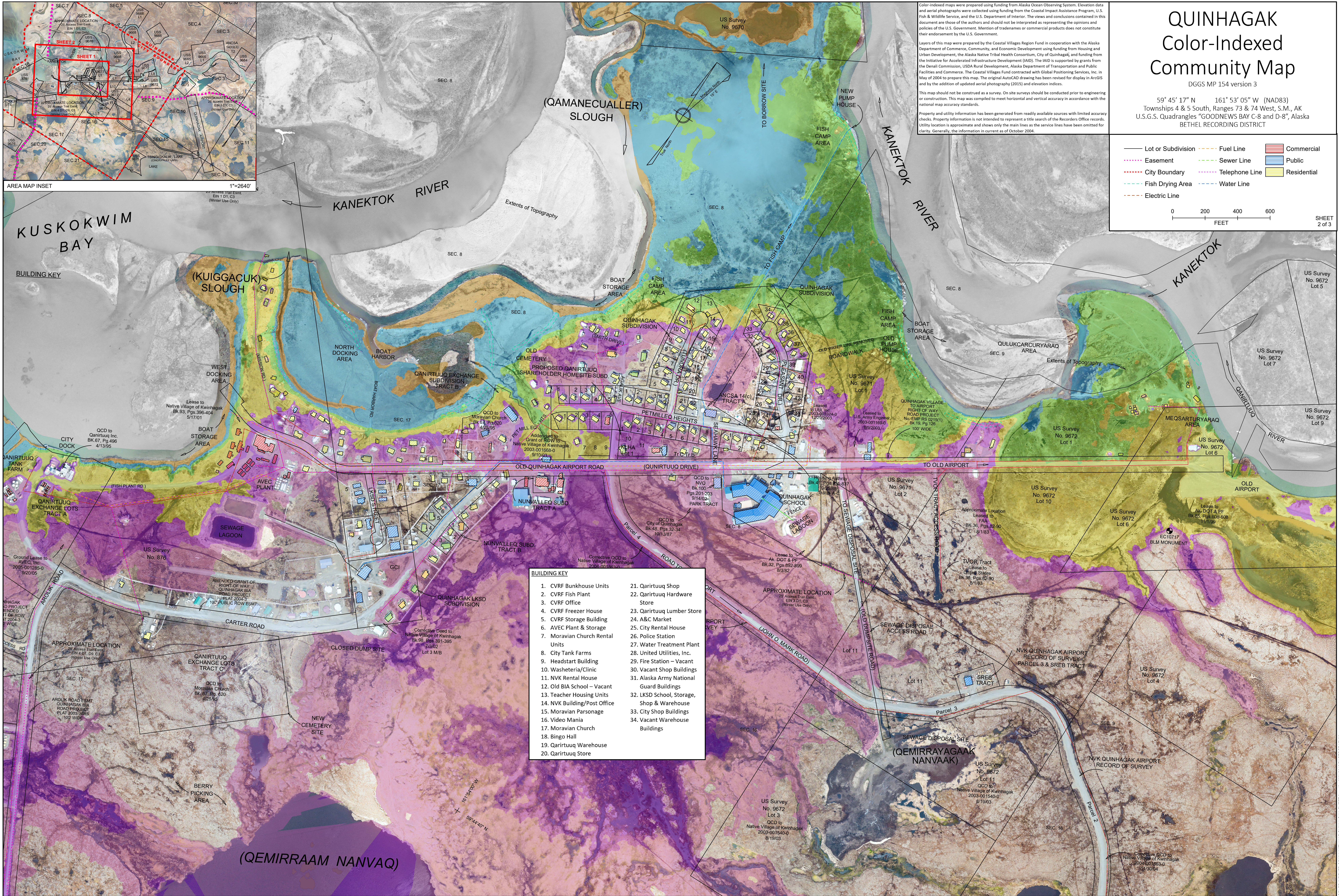
-Best available data sets in Alaska are not always up-to-date. Examples: Houses or infrastructure may have moved since DCRA linework was completed, local engineering projects might raise a road or add a seawall, and/or beach and sand spits may have naturally changed shape.

-Colors are restricted to areas of known elevation. In some cases the best available elevation model does not cover the entire DCRA Community Map area.

- Elevation Range**
- | | |
|------------------|-----------|
| Higher Elevation | 0.5 meter |
| | 0.5 meter |
| | 1 meter |
| | 1 meter |
| | 1 meter |
| Lower Elevation | 3 meters |

Color Key Available as Separate Sheet

Color indices shown to the left define relative vertical elevations. The vertical magnitude for each colored elevation range varies as shown (i.e. orange encompasses a 3-meter range of elevations that are the lowest elevations mapped). For up-to-date numerical elevation values associated with each colored elevation range, see key on a separate sheet MP 154 version 3 "Quinhagak Numerical Elevation Table".



QUINHAGAK

Color-Indexed Community Map

DGGS MP 154 version 3

59° 45' 17" N 161° 53' 05" W (NAD83)
Townships 4 & 5 South, Ranges 73 & 74 West, S.M., AK
U.S.G.S. Quadrangles "GOODNEWS BAY C-8 and D-8", Alaska
BETHEL RECORDING DISTRICT

— Lot or Subdivision

— Easement

— City Boundary

— Fish Drying Area

— Electric Line

— Fuel Line

— Sewer Line

— Telephone Line

— Water Line

Commercial

Public

Residential

0 200 400 600

FEET

SHEET 2 of 3

- BUILDING KEY
1. CVRF Bunkhouse Units

2. CVRF Fish Plant

3. CVRF Office

4. CVRF Freezer House

5. CVRF Storage Building

6. AVEC Plant & Storage

7. Moravian Church Rental Units

8. City Tank Farms

9. Headstart Building

10. Washeteria/Clinic

11. NVK Rental House

12. Old BIA School – Vacant

13. Teacher Housing Units

14. NVK Building/Post Office

15. Moravian Parsonage

16. Video Mania

17. Moravian Church

18. Bingo Hall

19. Qarirtuq Warehouse

20. Qarirtuq Store

21. Qarirtuq Shop

22. Qarirtuq Hardware Store

23. Qarirtuq Lumber Store

24. A&C Market

25. City Rental House

26. Police Station

27. Water Treatment Plant

28. United Utilities, Inc.

29. Fire Station – Vacant

30. Vacant Shop Buildings

31. Alaska Army National Guard Buildings

32. LKSD School, Storage, Shop & Warehouse

33. City Shop Buildings

34. Vacant Warehouse Buildings

59° 45' 17" N 161° 53' 05" W (NAD83)
Townships 4 & 5 South, Ranges 73 & 74 West, S.M., AK
U.S.G.S. Quadrangles "GOODNEWS BAY C-8 and D-8", Alaska
BETHEL RECORDING DISTRICT

0 600 1,200 1,800
FEET

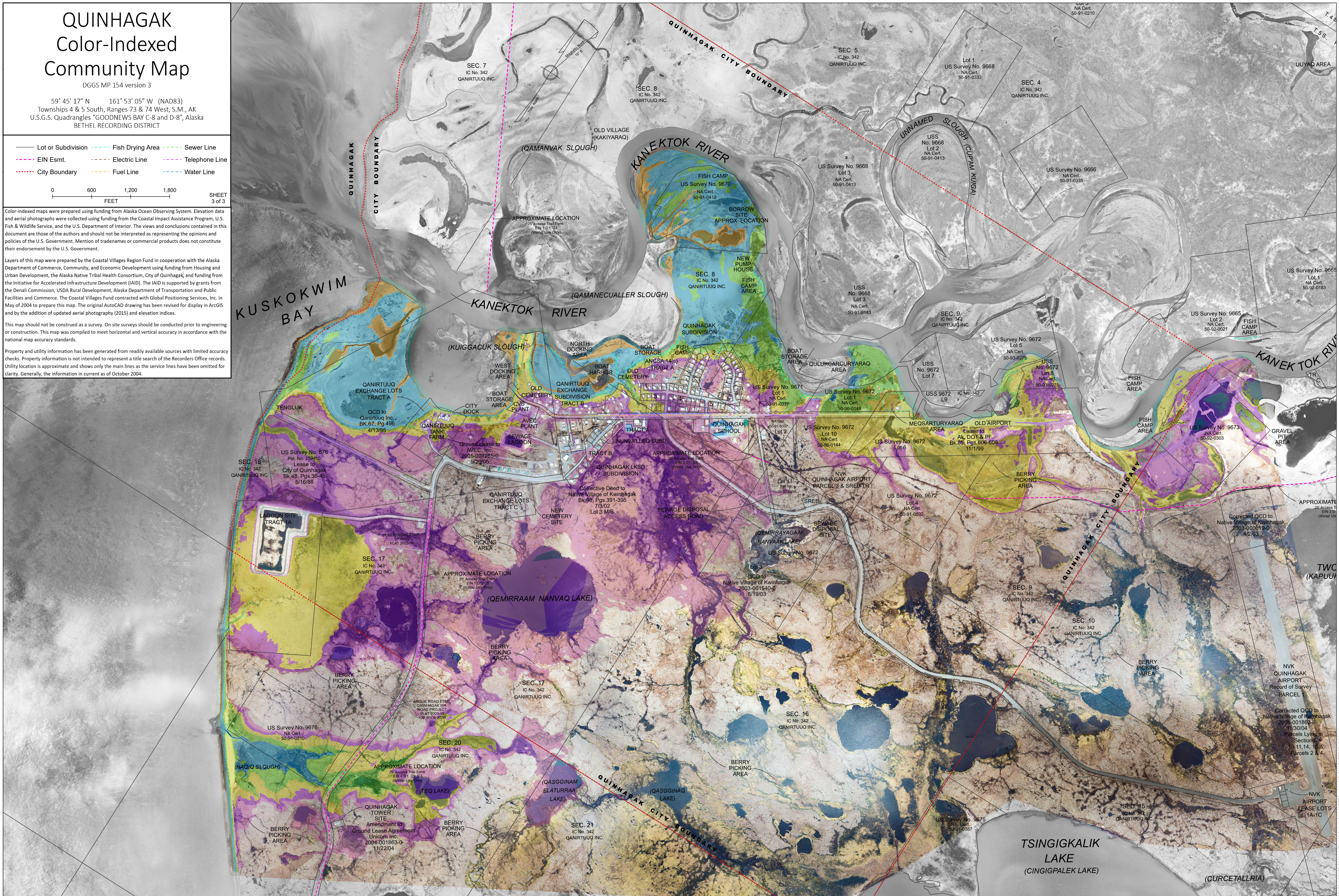
SHEET
3 of 3

Color-indexed maps were prepared using funding from Alaska Ocean Observing System. Elevation data and aerial photographs were collected using funding from the Coastal Impact Assistance Program, U.S. Fish & Wildlife Service, and the U.S. Department of Interior. The views and conclusions contained in this document are those of the authors and should not be interpreted as representing the opinions and policies of the U.S. Government. Mention of tradenames or commercial products does not constitute their endorsement by the U.S. Government.

Layers of this map were prepared by the Coastal Villages Region Fund in cooperation with the Alaska Department of Commerce, Community, and Economic Development using funding from Housing and Urban Development, the Alaska Native Tribal Health Consortium, City of Quinhagak, and funding from the Initiative for Accelerated Infrastructure Development (IAID). The IAID is supported by grants from the Denali Commission, USDA Rural Village Development, Alaska Department of Transportation and Public Facilities and Commerce. The Coastal Villages Fund contracted with Global Positioning Services, Inc. in May of 2004 to prepare this map. The original AutoCAD drawing has been revised for display in ArcGIS and by the addition of updated aerial photography (2015) and elevation indices.

This map should not be construed as a survey. On site surveys should be conducted prior to engineering or construction. This map was compiled to meet horizontal and vertical accuracy in accordance with the national map accuracy standards.

Property and utility information has been generated from readily available sources with limited accuracy checks. Property information is not intended to represent a title search of the Records Office records. Utility location is approximate and shows only the main lines as the service lines have been omitted for clarity. Generally, the information is current as of October 2004.



COLOR-INDEXED COMMUNITY MAP QUINHAGAK, SHEET 3 1" = 500' (2015 PHOTOGRAPHY)



Elevation intervals on the map are derived from 2015 source data. Temporal changes, human or naturally induced, may have occurred that will cause the elevations depicted on these map figures to no longer represent actual surface conditions.

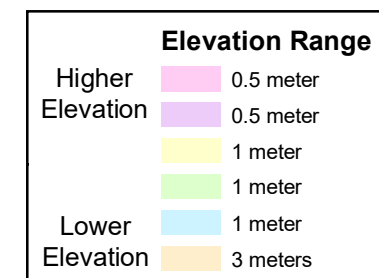
Please note the following disclosures/use limitations:

-These maps illustrate elevation and are not intended for use in the definition of flood zones. Flood levels are not perfectly flat and will not directly correspond to specific elevations.

-Vertical and horizontal accuracies vary by location.

- Best available data sets in Alaska are not always up-to-date. Examples: Houses or infrastructure may have moved since DCRA linework was completed, local engineering projects might raise a road or add a seawall, and/or beach and sand spits may have naturally changed shape.

-Colors are restricted to areas of known elevation. In some cases the best available elevation model does not cover the entire DCRA Community Map area.



Color Key Available as Separate Sheet

Color indices shown to the left define relative vertical elevations. The vertical magnitude for each colored elevation range varies as shown (i.e. orange encompasses a 3-meter range of elevations that are the lowest elevations mapped). For up-to-date numerical elevation values associated with each colored elevation range, see key on a separate sheet MP 154 version 3 'Quinagak Numerical Elevation Table'.

Measured Water Levels & Significant Elevations

Color-Indexed Map Elevation Ranges

