

MAP NOTES

Color-indexed maps were prepared using funding from the Alaska Ocean Observing System. Elevation data and aerial photographs were collected using funding from the Coastal Impact Assistance Program, U.S. Fish and Wildlife Service, U.S. Department of the Interior. The views and conclusions contained in this document are those of the authors and should not be interpreted as representing the opinions or policies of the U.S. Government. Mention of trade names or commercial products does not constitute their endorsement by the U.S. Government.

This map was prepared by Coastal Villages Region Fund (CVRP) in cooperation with the Alaska Department of Commerce, Community, and Economic Development (Commerce) using funding from Commerce, the Alaska Tribal Native Health Consortium, (Village of Tununak) and funding from the Initiative for Accelerated Infrastructure Development (IAID). The IAID is supported with grants from the Denali Commission, USDA Rural Development, Alaska Department of Transportation and Public Facilities and Commerce. Coastal Villages Region Fund contracted with Global Positioning Services Inc. in June of 2004 to prepare the map. The original AutoCAD drawing has been revised for display in ArcGIS and by the addition of updated aerial photography (2015) and elevation indices.

This map should not be construed as a survey. On-site surveys should be conducted prior to engineering or construction.

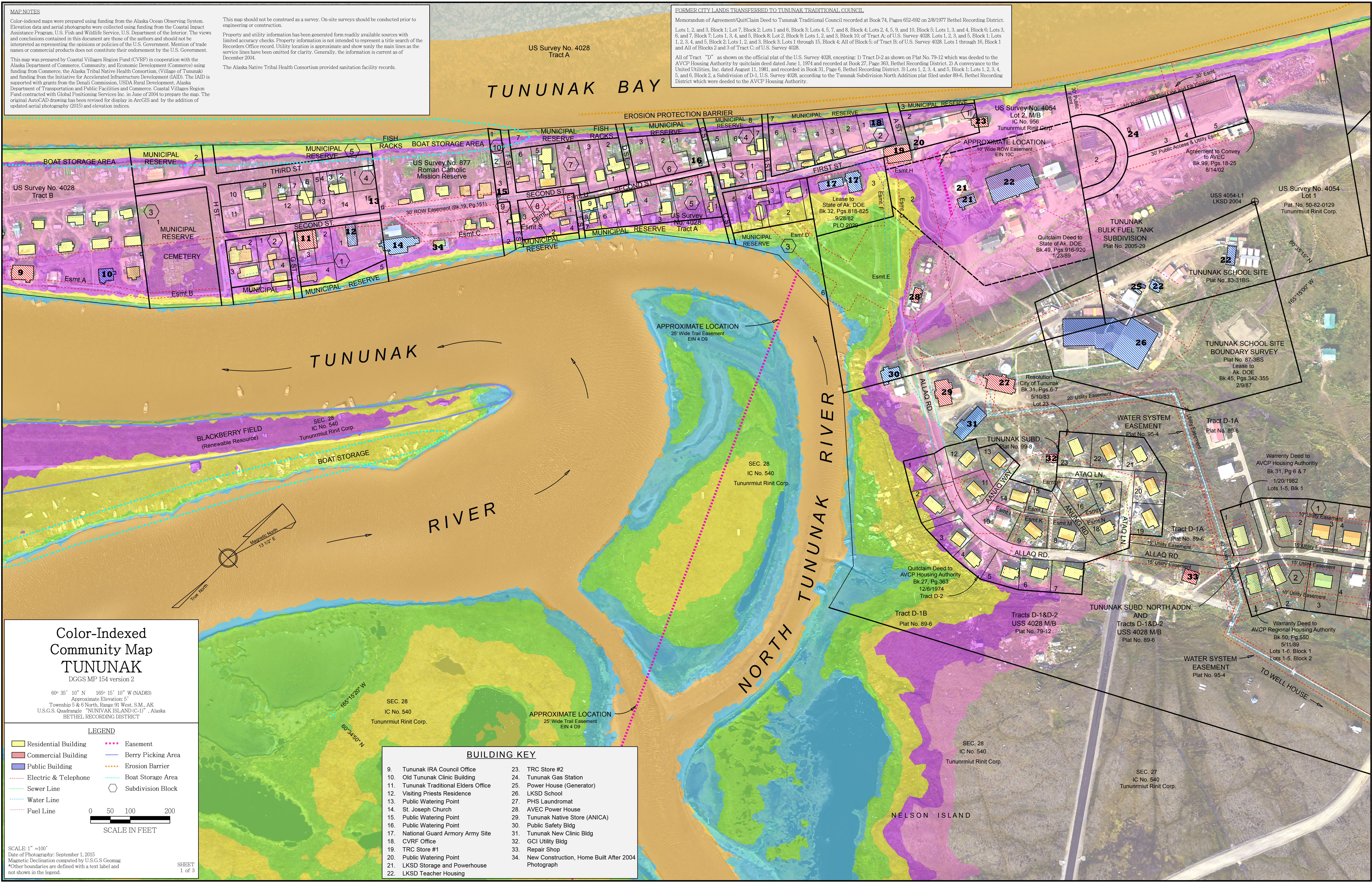
Property and utility information has been generated from readily available sources with limited accuracy checks. Property information is not intended to represent a title search of the Records Office record. Utility location is approximate and show only the main lines as the service lines have been omitted for clarity. Generally, the information is current as of December 2004.

The Alaska Native Tribal Health Consortium provided sanitation facility records.

FORMER CITY LANDS TRANSFERRED TO TUNUNAK TRADITIONAL COUNCIL

Memorandum of Agreement/Quitclaim Deed to Tununak Traditional Council recorded at Book 74, Pages 652-692 on 2/8/1977 Bethel Recording District. Lots 1, 2, and 3, Block 1; Lot 7, Block 2; Lots 1 and 6, Block 3; Lots 4, 5, 7, and 8, Block 4; Lots 2, 4, 5, 9, and 10, Block 5; Lots 1, 3, and 4, Block 6; Lots 3, 6, and 7, Block 7; Lots 1, 3, 4, and 5, Block 8; Lot 2, Block 9; Lots 1, 2, and 3, Block 10; of Tract A; of U.S. Survey 4028. Lots 1, 2, 3, and 5, Block 1; Lots 1, 2, 3, 4, and 5, Block 2; Lots 1, 2, and 3, Block 3; Lots 1 through 15, Block 4; All of Block 5; of Tract B; of U.S. Survey 4028. Lots 1 through 16, Block 1 and All of Blocks 2 and 3 of Tract C; of U.S. Survey 4028.

All of Tract "D" as shown on the official plat of the U.S. Survey 4028, excepting: 1) Tract D-2 as shown on Plat No. 79-12 which was deeded to the AVCP Housing Authority by quitclaim deed dated June 1, 1974 and recorded at Book 27, Page 363, Bethel Recording District. 2) A conveyance to the United Utilities, Inc. dated August 11, 1981, and recorded in Book 31, Page 6, Bethel Recording District. 3) Lots 1, 2, 3, 4, and 5, Block 1; Lots 1, 2, 3, 4, and 5, Block 2; a Subdivision of D-1, U.S. Survey 4028, according to the Tununak Subdivision North Addition plat filed under 89-6, Bethel Recording District which were deeded to the AVCP Housing Authority.



Color-Indexed Community Map TUNUNAK

DGGS MP 154 version 2

60° 35' 10" N 165° 15' 10" W (NAD83)
Approximate Elevation: 5'
Township 5 & 6 North, Range 91 West, S.M., AK
U.S.G.S. Quadrangle "NUNIVAK ISLAND (C-1)", Alaska
BETHEL RECORDING DISTRICT

LEGEND

Residential Building

Commercial Building

Public Building

Electric & Telephone

Sewer Line

Water Line

Fuel Line

Easement

Berry Picking Area

Erosion Barrier

Boat Storage Area

Subdivision Block

0 50 100 200

SCALE IN FEET

SCALE: 1" = 100'

Date of Photography: September 1, 2015

Magnetic Declination computed by U.S.G.S. Geomag

*Other boundaries are defined with a text label and not shown in the legend.

SHEET 1 of 3

BUILDING KEY			
9.	Tununak IRA Council Office	23.	TRC Store #2
10.	Old Tununak Clinic Building	24.	Tununak Gas Station
11.	Tununak Traditional Elders Office	25.	Power House (Generator)
12.	Visiting Priests Residence	26.	LKSD School
13.	Public Watering Point	27.	PHS Laundromat
14.	St. Joseph Church	28.	AVEC Power House
15.	Public Watering Point	29.	Tununak Native Store (ANICA)
16.	Public Watering Point	30.	Public Safety Bldg
17.	National Guard Armory Army Site	31.	Tununak New Clinic Bldg
18.	CVRF Office	32.	GCI Utility Bldg
19.	TRC Store #1	33.	Repair Shop
20.	Public Watering Point	34.	New Construction, Home Built After 2004 Photograph
21.	LKSD Storage and Powerhouse		
22.	LKSD Teacher Housing		

Elevation intervals on the map are derived from 2015 source data. Temporal changes, human or naturally induced, may have occurred that will cause the elevations depicted on these map figures to no longer represent actual surface conditions.

Please note the following disclosures/use limitations:

- These maps illustrate elevation and are not intended for use in the definition of flood zones. Flood levels are not perfectly flat and will not directly correspond to specific elevations.

-Vertical and horizontal accuracies vary by location.

-Best available data sets in Alaska are not always up-to-date. Examples: Houses or infrastructure may have moved since DCRA linework was completed, local engineering projects might raise a road or add a seawall, and/or beach and sand spits may have naturally changed shape.

-Colors are restricted to areas of known elevation. In some cases the best available elevation model does not cover the entire DCRA Community Map area.

Elevation Range	
Higher Elevation	1 meter
	1 meter
	1 meter
	0.5 meters
	0.5 meters
Lower Elevation	2 meters

Color Key Available as Separate Sheet

Color indices shown to the left define relative vertical elevations. The vertical magnitude for each colored elevation range varies as shown (i.e. orange encompasses a 2-meter range of elevations that are the lowest elevations mapped). For up-to-date numerical elevation values associated with each colored elevation range, see key on a separate sheet MP 154 version 2 "Tununak Numerical Elevation Table".

Alaska Ocean Observing System

WEATHER-READY NATION

NATIONAL WEATHER SERVICE

COLOR-INDEXED COMMUNITY MAP TUNUNAK, SHEET 1 1"=100' (2015 PHOTOGRAPHY)

Legend & Notes

- Easement
- Boat Storage Area
- Berry Picking Area
- Grass Picking Area
- Erosion Barrier

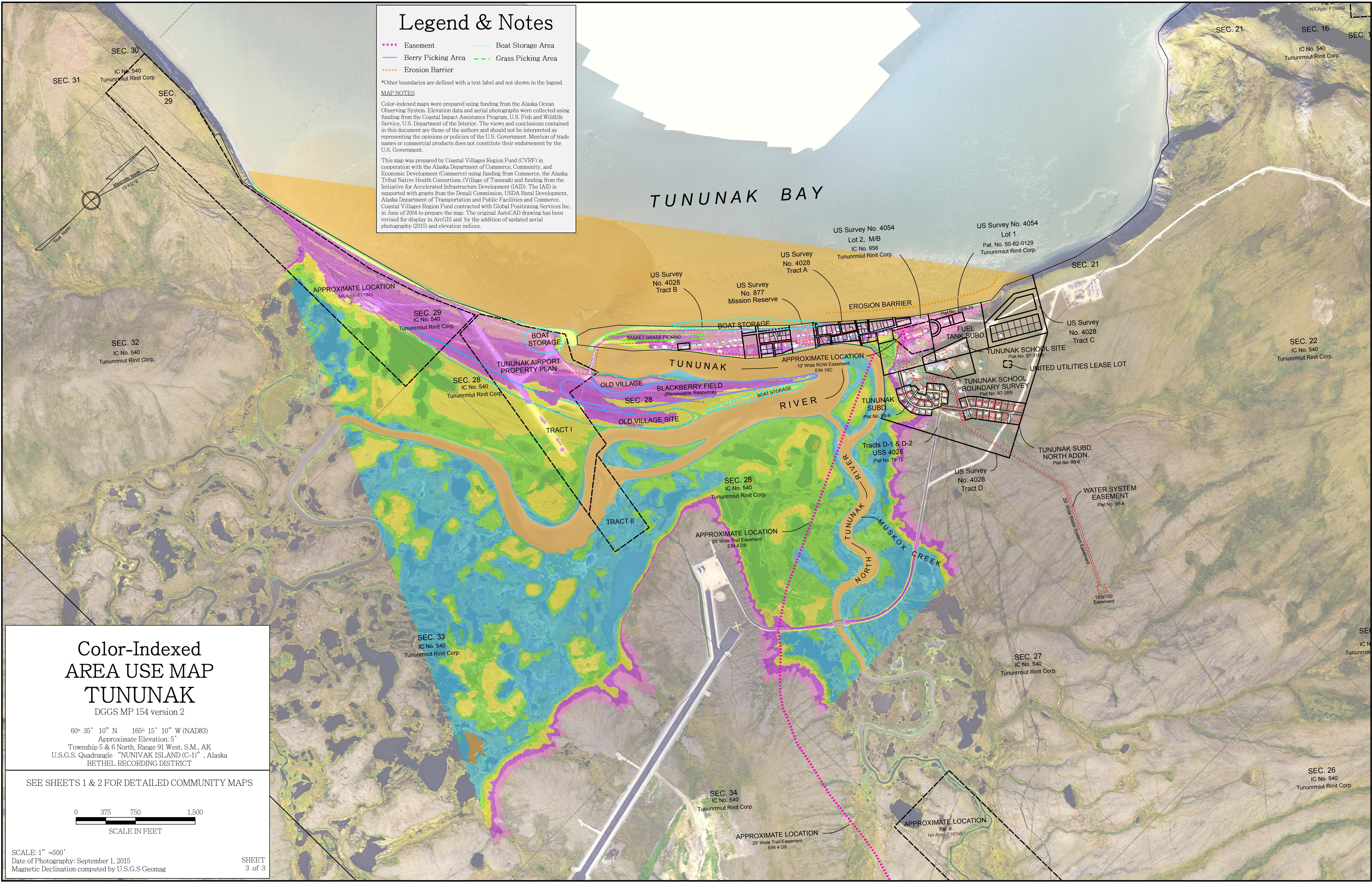
*Other boundaries are defined with a text label and not shown in the legend.

MAP NOTES

Color-indexed maps were prepared using funding from the Alaska Ocean Observing System. Elevation data and aerial photographs were collected using funding from the Coastal Impact Assistance Program, U.S. Fish and Wildlife Service, U.S. Department of the Interior. The views and conclusions contained in this document are those of the authors and should not be interpreted as representing the opinions or policies of the U.S. Government. Mention of trade names or commercial products does not constitute their endorsement by the U.S. Government.

This map was prepared by Coastal Villages Region Fund (CVRP) in cooperation with the Alaska Department of Commerce, Community, and Economic Development (Commerce) using funding from Commerce, the Alaska Tribal Native Health Consortium, (Village of Tununak) and funding from the Initiative for Accelerated Infrastructure Development (IAID). The IAID is supported with grants from the Denali Commission, USDA Rural Development, Alaska Department of Transportation and Public Facilities and Commerce. Coastal Villages Region Fund contracted with Global Positioning Services Inc. in June of 2004 to prepare the map. The original AutoCAD drawing has been revised for display in ArcGIS and by the addition of updated aerial photography (2015) and elevation indices.

TUNUNAK BAY



Color-Indexed AREA USE MAP TUNUNAK

DGGs MP 154 version 2

60° 35' 10" N 165° 15' 10" W (NAD83)
Approximate Elevation: 5'
Township 5 & 6 North, Range 91 West, S.M., AK
U.S.G.S. Quadrangle "NUNIVAK ISLAND (C-1)", Alaska
BETHEL RECORDING DISTRICT

SEE SHEETS 1 & 2 FOR DETAILED COMMUNITY MAPS

0 375 750 1,500
SCALE IN FEET

SCALE: 1" =500'
Date of Photography: September 1, 2015
Magnetic Declination computed by U.S.G.S Geomag

SHEET
3 of 3



Elevation intervals on the map are derived from 2015 source data. Temporal changes, human or naturally induced, may have occurred that will cause the elevations depicted on these map figures to no longer represent actual surface conditions.
Please note the following disclosures/use limitations:
-These maps illustrate elevation and are not intended for use in the definition of flood zones. Flood levels are not perfectly flat and will not directly correspond to specific elevations.

-Vertical and horizontal accuracies vary by location.
-Best available data sets in Alaska are not always up-to-date. Examples: Houses or infrastructure may have moved since DCRA linework was completed, local engineering projects might raise a road or add a seawall, and/or beach and sand spits may have naturally changed shape.
-Colors are restricted to areas of known elevation. In some cases the best available elevation model does not cover the entire DCRA Community Map area.

Elevation Range
Higher Elevation
1 meter
1 meter
1 meter
0.5 meters
0.5 meters
Lower Elevation
0.5 meters
2 meters

Color Key Available as Separate Sheet

Color indices shown to the left define relative vertical elevations. The vertical magnitude for each colored elevation range varies as shown (i.e. orange encompasses a 2-meter range of elevations that are the lowest elevations mapped). For up-to-date numerical elevation values associated with each colored elevation range, see key on a separate sheet MP 154 version 2 "Tununak Numerical Elevation Table".

