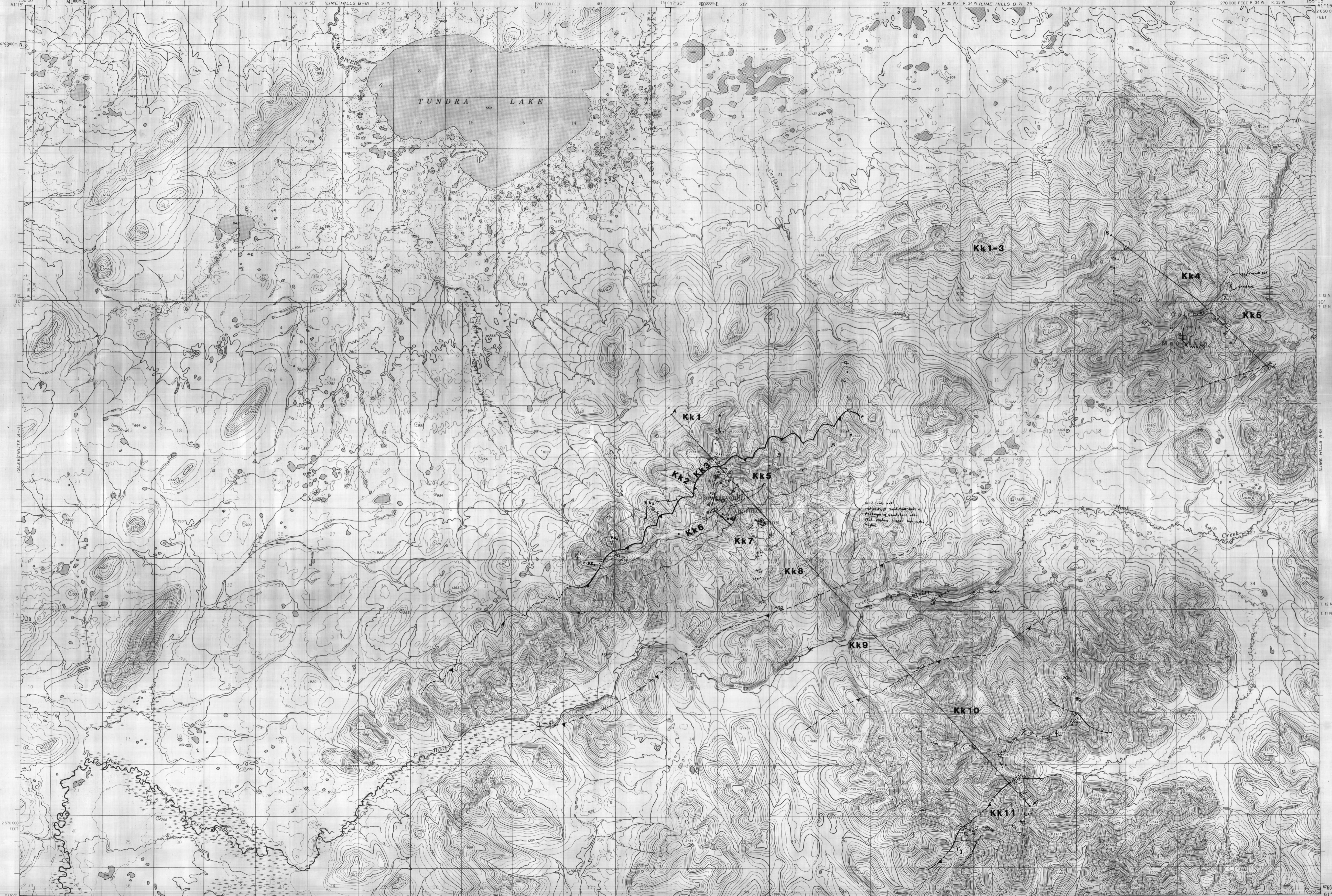


UNITED STATES
DEPARTMENT OF THE INTERIOR
GEOLOGICAL SURVEY

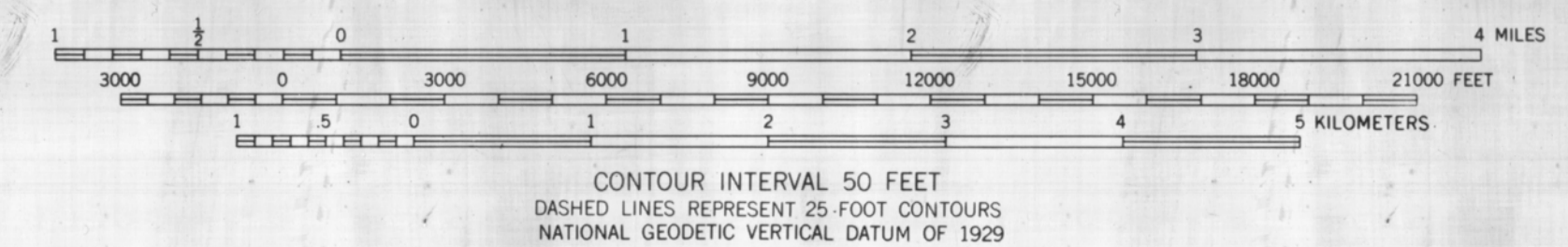
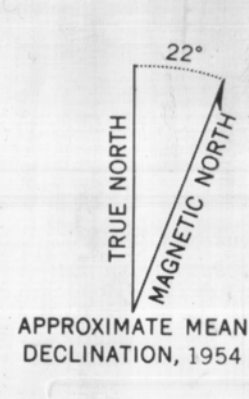
LIME HILLS (A-8) QUADRANGLE
ALASKA
1:63 360 SERIES (TOPOGRAPHIC)

UNITED STATES
DEPARTMENT OF THE INTERIOR
GEOLOGICAL SURVEY

LIME HILLS (A-7) QUADRANGLE
ALASKA
1:63 360 SERIES (TOPOGRAPHIC)

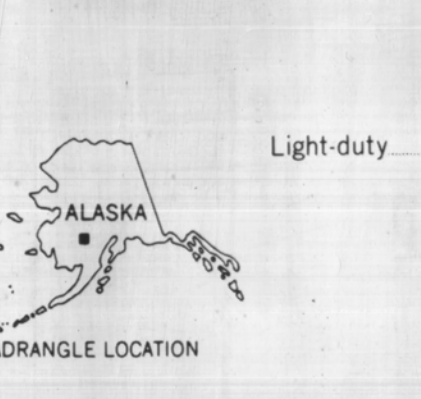
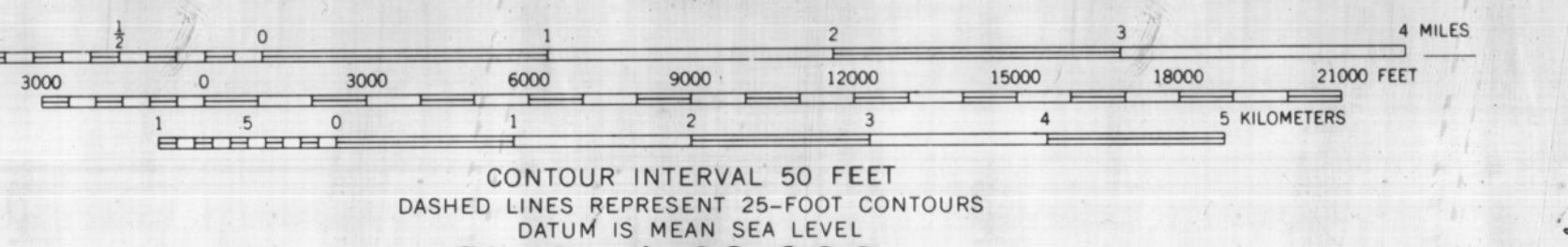
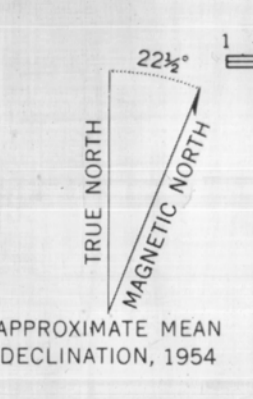


Mapped by the Army Map Service
Published for civil use by the Geological Survey
Control by USCGS and USCE
Topography by photogrammetric methods from aerial photographs
taken 1953, 1955, and 1957, field annotated 1954. Map not field checked
Universal Transverse Mercator projection, 1927 North American datum
10,000-foot grid ticks based on Alaska coordinate system, zone 5
1000-meter Universal Transverse Mercator grid ticks,
zone 5, shown in blue
Gray land lines represent unsurveyed and unmarked locations
predetermined by the Bureau of Land Management
Folio S-11, Seward Meridian



LIME HILLS (A-8), ALASKA
N6100-W15537-15X22-5
1954
MINOR REVISIONS 1975

ROAD CLASSIFICATION
Trails
Mapped by the Army Map Service
Edited and published by the Geological Survey
Control by USCGS and USCE
Topography by photogrammetric methods from aerial photographs
taken 1953 and 1957, field annotated 1954. Map not field checked
Universal Transverse Mercator projection, 1927 North American datum
10,000-foot grid based on Alaska coordinate system, zone 5
1000-meter Universal Transverse Mercator grid ticks,
zone 5, shown in blue
Land lines represent unsurveyed and unmarked locations
predetermined by the Bureau of Land Management
Folio S-11, Seward Meridian



LIME HILLS (A-7), ALASKA
N6100-W15515-15X22-5
1954

GEOLOGIC MAP OF THE SPARREVOHN AREA
by John Decker
1984