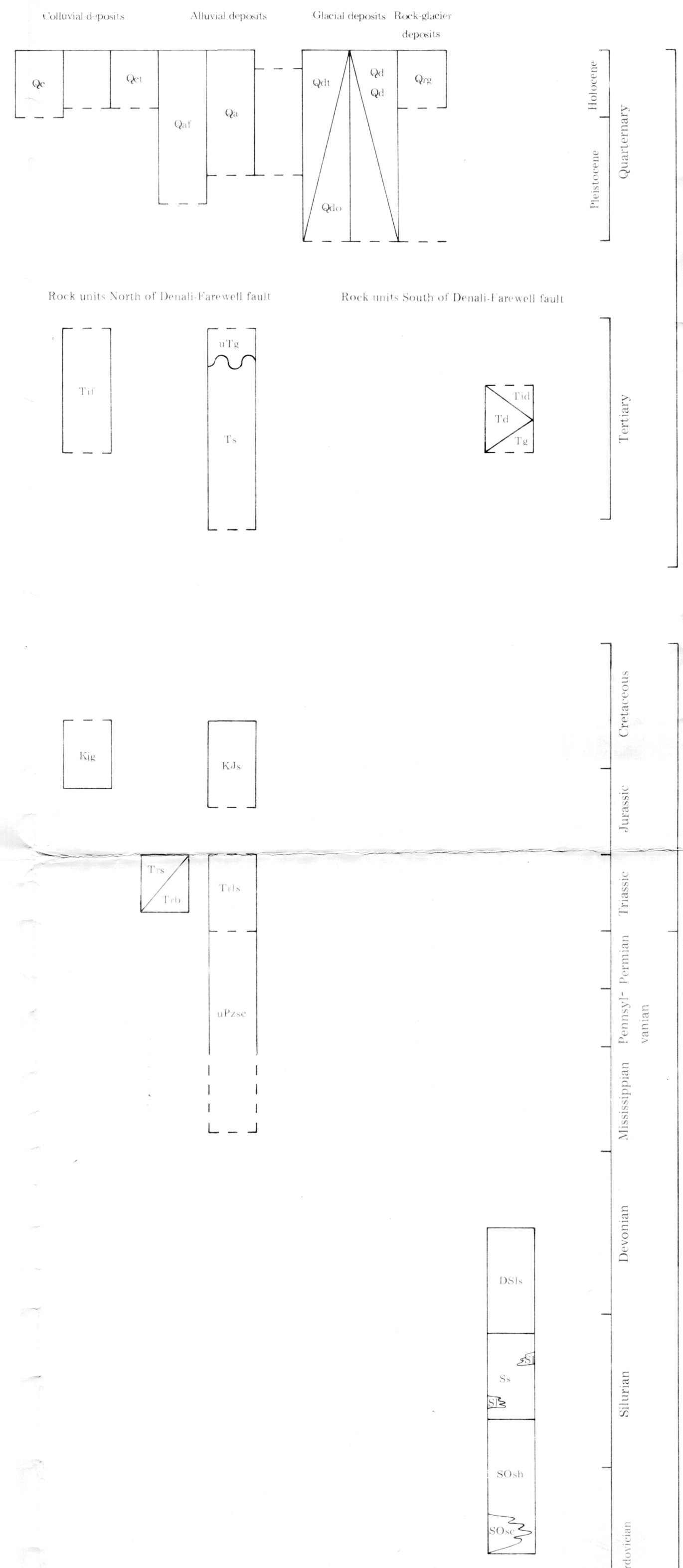
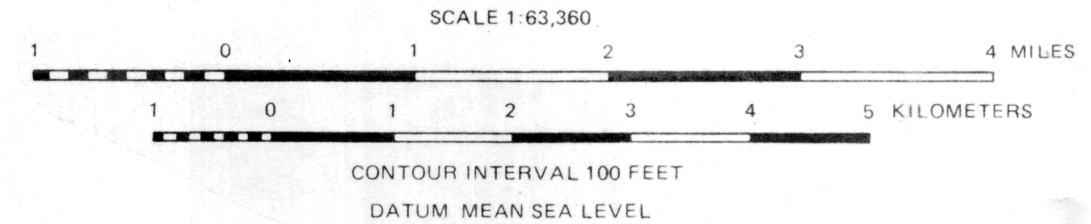
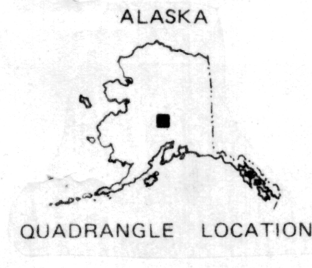




CORRELATION OF MAP UNITS



Base from U. S. Geological Survey
Mc Grath C-1 (1958) Quadrangle, Alaska



Field work performed during the summers of 1983 and 1984 by W. G. Gilbert, T. K. Bundtzen and J. T. Kline.

To convert feet to meters, multiply by 0.3048. To convert inches to centimeters, multiply by 2.54. To convert miles to kilometers, multiply by 1.61.

PRELIMINARY GEOLOGIC MAP OF THE MC GRATH C-1 QUADRANGLE, ALASKA

by

J.T. Kline, W.G. Gilbert, and T.K. Bundtzen