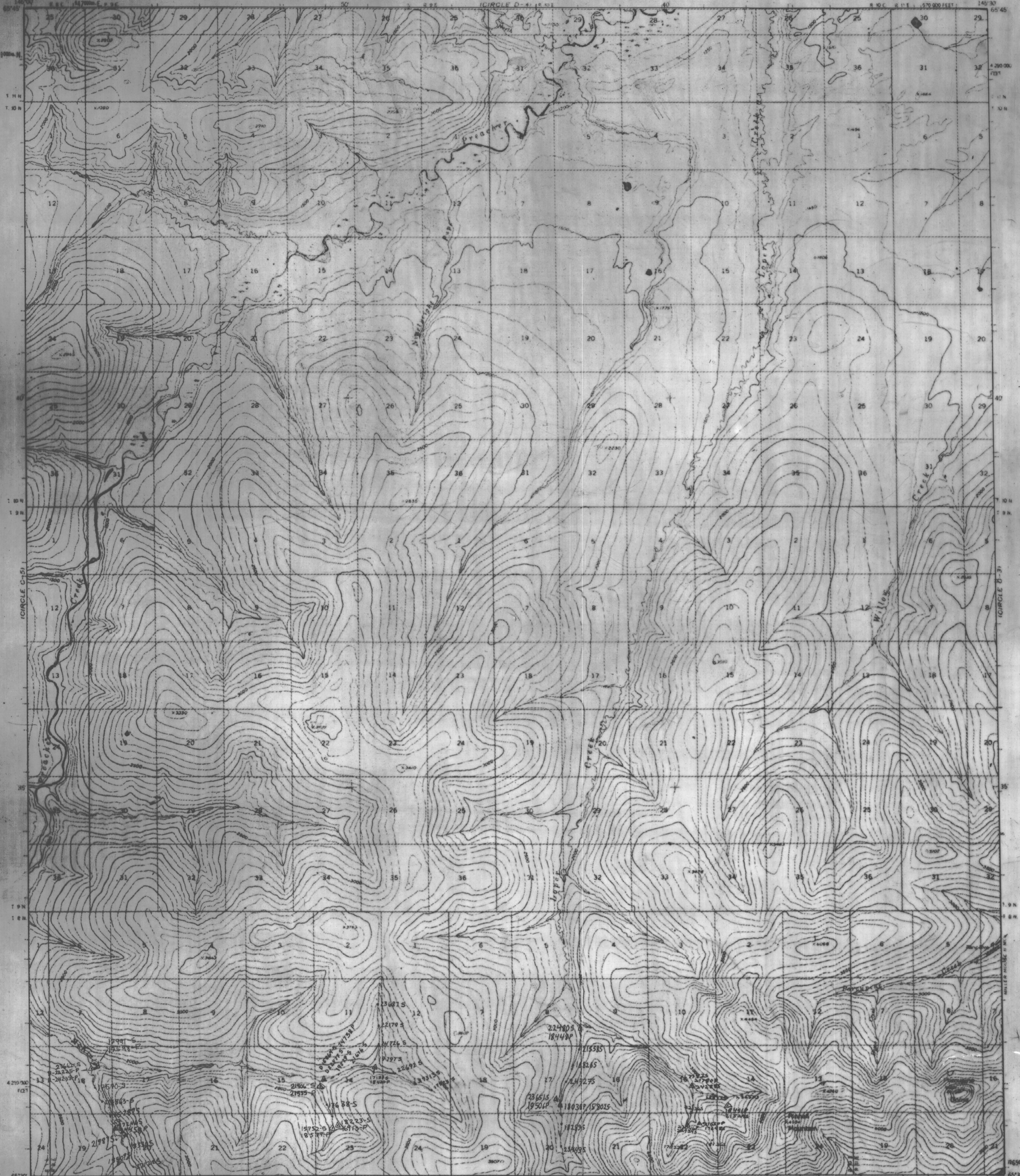


UNITED STATES DEPARTMENT OF THE INTERIOR GEOLOGICAL SURVEY

CIRCLE (C-4) QUADRANGLE ALASKA

1:63,360 SERIES (TOPOGRAPHIC)



Mapped, edited, and published by the Geological Survey
Control by USGS and USCAGS
Topography by photogrammetric methods from aerial photographs
taken 1951, field annotated 1952. Map not field checked.
Universal Transverse Mercator projection, 1927 North American datum
10,000-foot grid based on Alaska coordinate system, zone 3
1000-meter Universal Transverse Mercator grid ticks,
zone 3, shown in blue.
Land lines represent unsurveyed and unmarked locations
determined by the Bureau of Land Management
Foto F-7, Fairbanks Meridian
Bearings, as portrayed, indicate only the better part,
usually of low relief, as interpreted from aerial photographs.



CONTOUR INTERVAL 100 FEET
DASHED LINES INDICATE 50 FOOT CONTOURS
DATUM IS MEAN SEA LEVEL

ROAD CLASSIFICATION
Light duty

STEESE/WHITE MTS PROJECT ANALYTICAL DATA
CIRCLE C-4 Sample Locations

by Staff, 1986



CIRCLE (C-4), ALASKA
N6530-W14530/15X30

1982
MINOR REVISIONS 1987

EXPLANATION

198675S	stream sediment sample
A179645P	heavy mineral concentrate
173823R	rock specimen sample