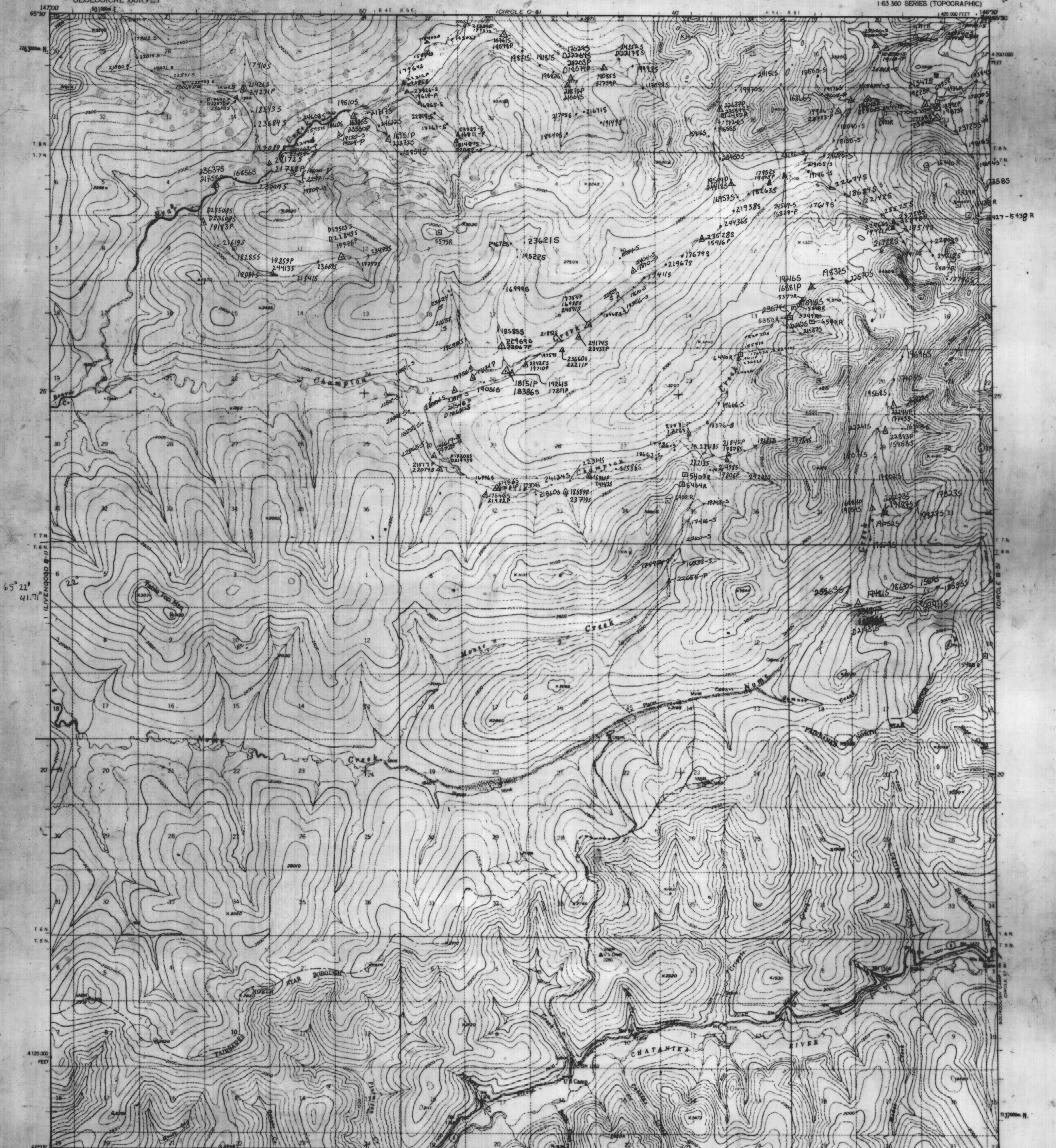
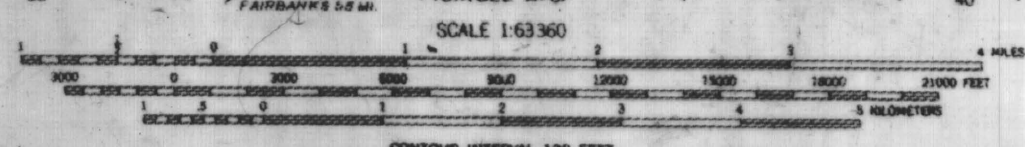


UNITED STATES  
DEPARTMENT OF THE INTERIOR  
GEOLOGICAL SURVEY

CIRCLE (B-6) QUADRANGLE  
ALASKA  
1:63 360 SERIES (TOPOGRAPHIC)



Mapped, edited, and published by the Geological Survey  
Control by USC&GS  
Topography by photogrammetric methods from aerial photographs  
taken 1951, field annotated 1954. Map not field checked  
Universal Transverse Mercator projection, 1927 North American datum  
10,000-foot grid based on Alaska coordinate system, zone 3  
1000-meter Universal Transverse Mercator grid ticks,  
zone 6, shown in blue  
Gray land lines represent unsurveyed and unmarked locations  
preetermined by the Bureau of Land Management  
Folio F 7, Fairbanks Meridian



**STEESE/WHITE MTS PROJECT ANALYTICAL DATA**  
**CIRCLE B-6 Sample Locations**  
by Staff, 1986



ROAD CLASSIFICATION  
Light-duty ..... Unimproved dirt .....  
○ State Route

CIRCLE (B-6), ALASKA  
N6515-W14630/15X30  
1954  
REVISION NUMBER 1975

EXPLANATION

11779S	stream sediment sample
44388P	heavy mineral concentrate
504896R	rock specimen sample