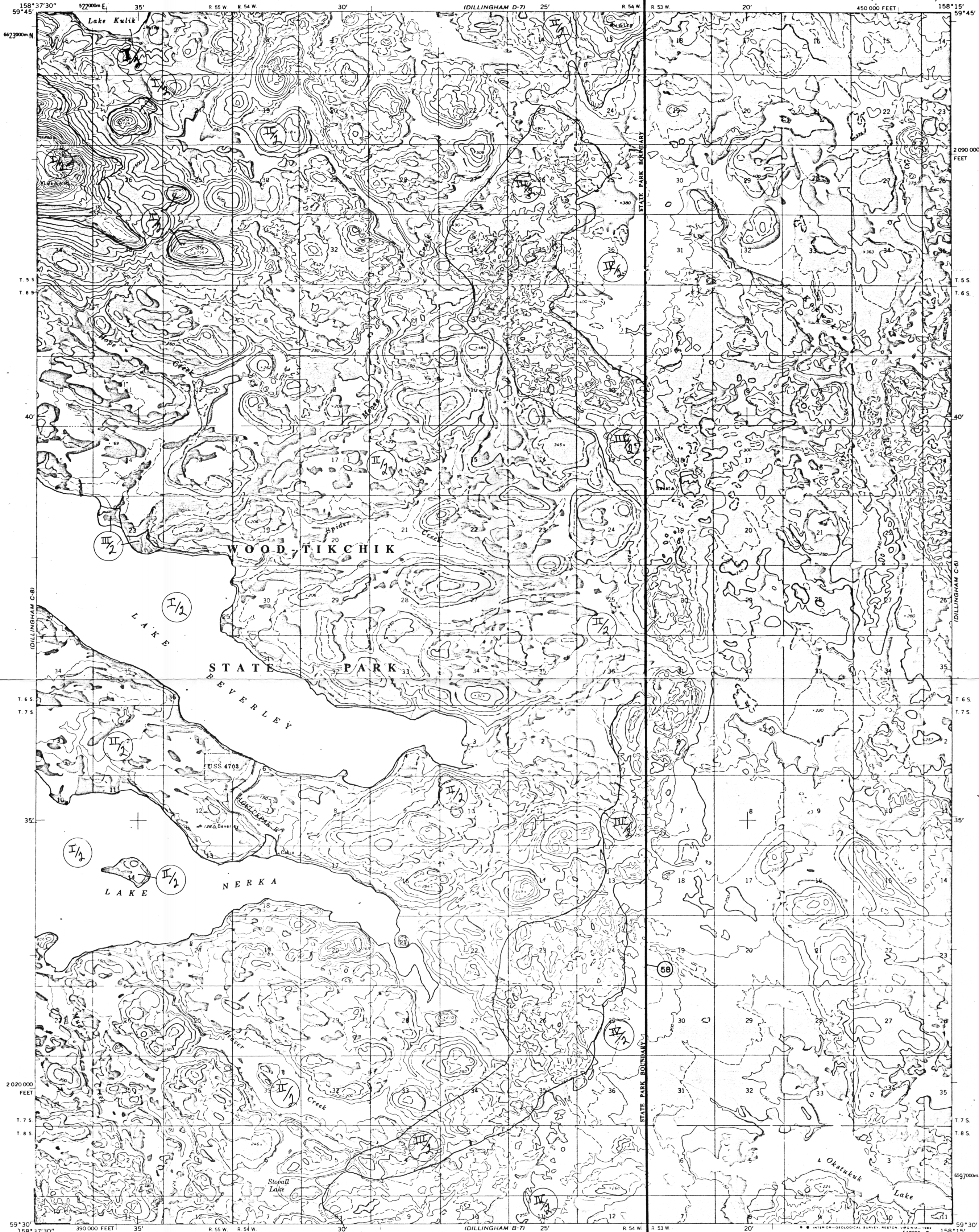


UNITED STATES
DEPARTMENT OF THE INTERIOR
GEOLOGICAL SURVEY

DILLINGHAM (C-7) QUADRANGLE
ALASKA
1:63 360 SERIES (TOPOGRAPHIC)



Map by the Army Map Service
Edited and published by the Geological Survey
Control by USC&GS and USCE

Topography by photogrammetric methods from aerial photographs
taken 1953

LEGISLATIVE DESIGNATED AREA

Universal Transverse Mercator projection. 1927 North American datum
10,000 foot

68 WOOD TIKCHIK STATE PARK AS 41.21161-167

1000-meter Universal Transverse Mercator grid ticks,
zone 4, shown in blue

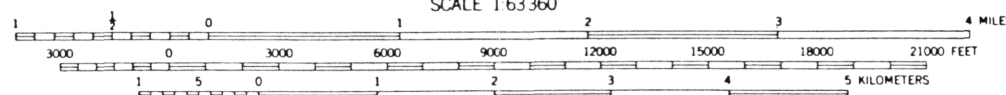
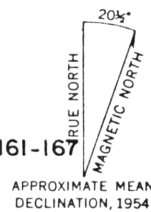
Gray land lines represent unsurveyed and unmarked locations
predetermined by the Bureau of Land Management

Folio S-19, Seward Meridian

Swamps, as portrayed, indicate only the wetter areas,
usually of low relief, as interpreted from aerial photographs

There may be private inholdings within the boundaries of
the National

OCTOBER 1987 shown on this map
To place on the predicted North American Datum 1983 move
the projection lines 82 meters north and 134 meters east



CONTOUR INTERVAL 50 FEET
DASHED LINES REPRESENT 25-FOOT CONTOURS

NATIONAL GEODETIC VERTICAL DATUM OF 1929

FOR SALE BY U. S. GEOLOGICAL SURVEY
FAIRBANKS, ALASKA 99701, DENVER, COLORADO 80225, OR RESTON, VIRGINIA 22092
A FOLDER DESCRIBING TOPOGRAPHIC MAPS AND SYMBOLS IS AVAILABLE ON REQUEST



ROAD CLASSIFICATION
No roads or trails in this area
DILLINGHAM (C7) 1981

DILLINGHAM (C-7), ALASKA
N5930—W15815/15X22.5

1954
MINOR REVISIONS 1981

Mertie (1938)
Rager (1987 Map Interpretation)