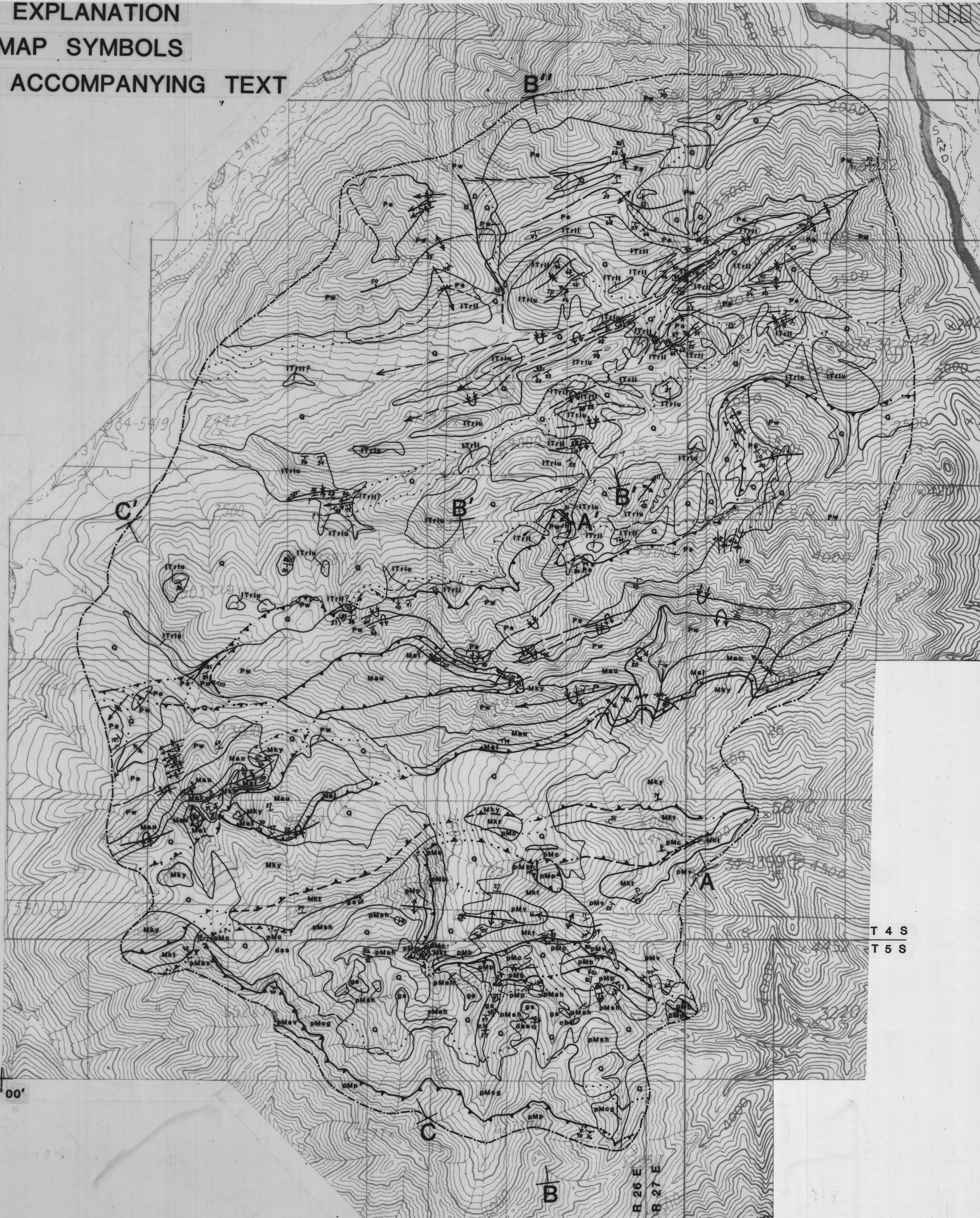


ALASKA DIVISION OF GEOLOGICAL AND GEOPHYSICAL SURVEYS
IN COOPERATION WITH THE BROOKS RANGE RESEARCH PROGRAM,
DEPARTMENT OF GEOLOGY & GEOPHYSICS, UNIVERSITY OF ALASKA - FAIRBANKS

FOR EXPLANATION
OF MAP SYMBOLS
SEE ACCOMPANYING TEXT

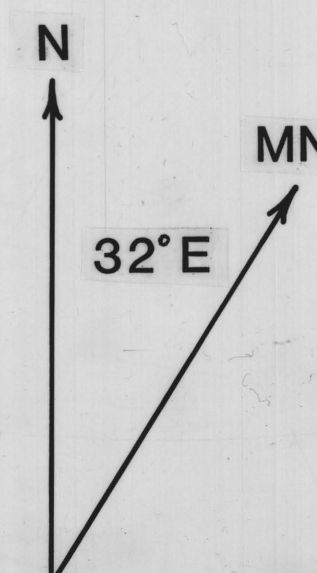


PRELIMINARY GEOLOGIC MAP OF FRANKLIN MOUNTAINS
BETWEEN FORKS OF THE CANNING RIVER, ARCTIC NATIONAL WILDLIFE REFUGE,
NORTHEASTERN BROOKS RANGE, ALASKA

BY
J. A. ZIEGLER 1988

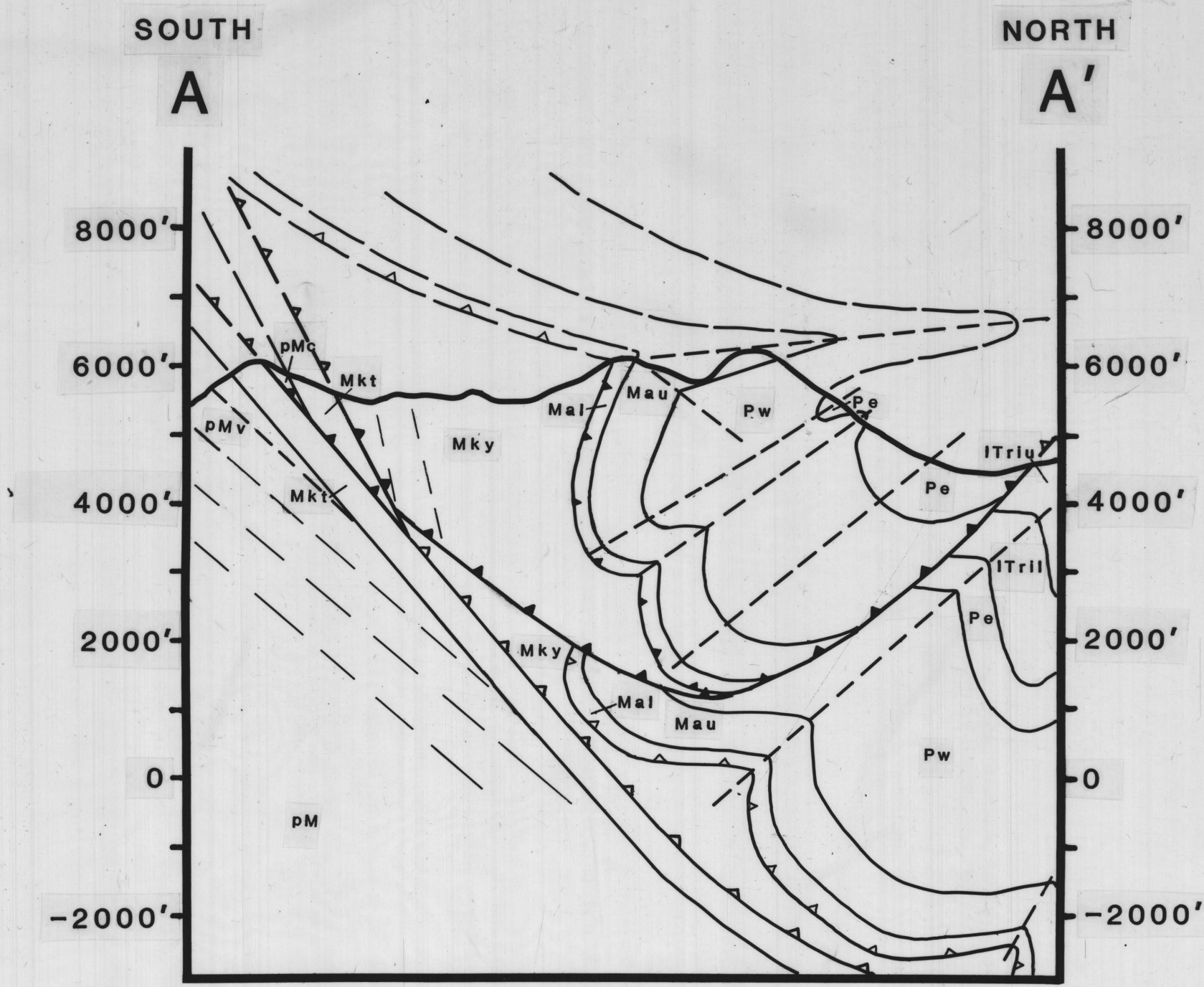
0 1 2 MILES

SCALE 1 : 25,000
CONTOUR INTERVAL 100 FEET

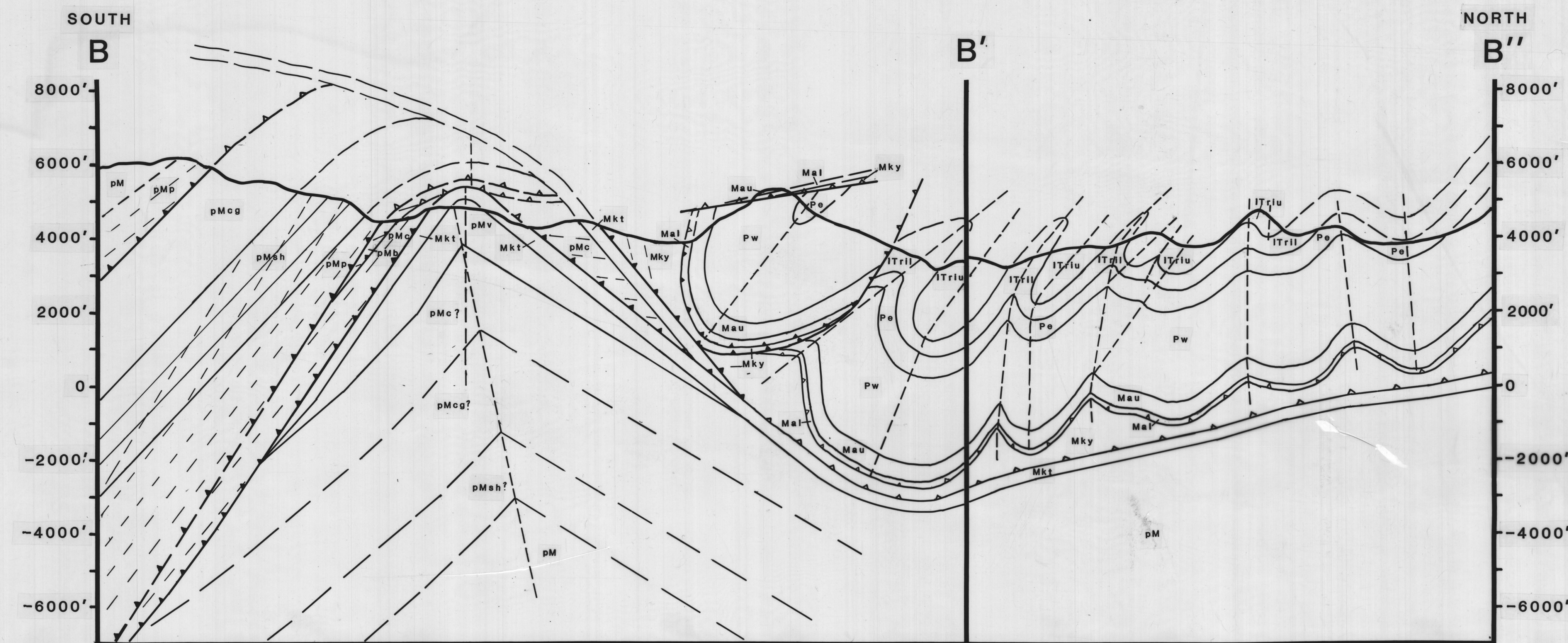


APPROXIMATE DECLINATION, 1983

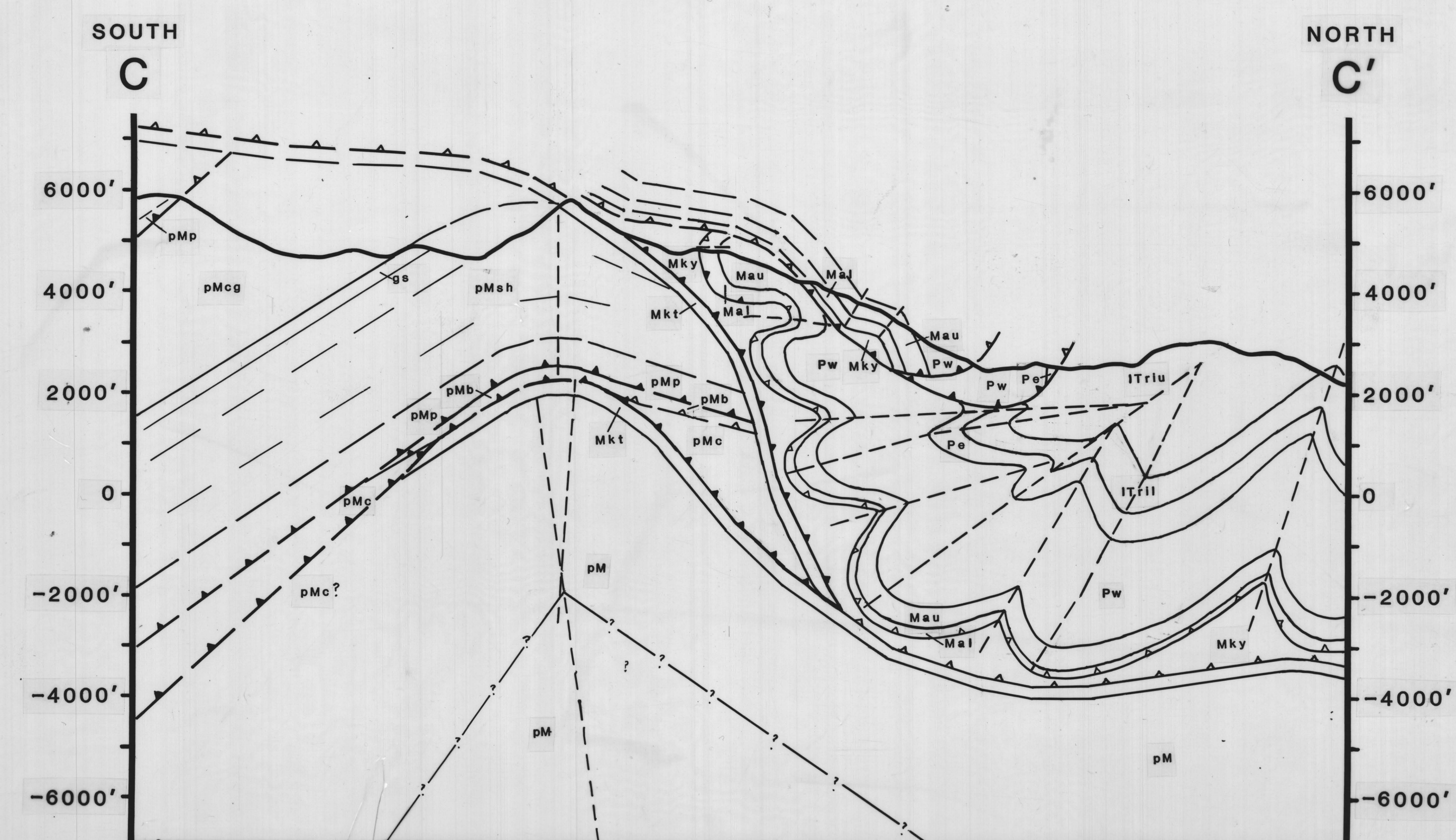
CROSS SECTION A - A'



CROSS SECTION B - B''



CROSS SECTION C - C'



SCALE 1 : 25,000

NO VERTICAL EXAGGERATION

CROSS SECTIONS ARE SCHEMATIC AND DO NOT BALANCE

THIS DOCUMENT HAS NOT RECEIVED OFFICIAL
ADGGS REVIEW AND PUBLICATION STATUS

