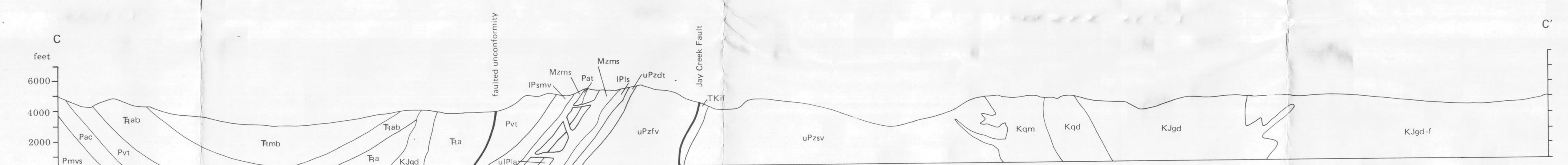
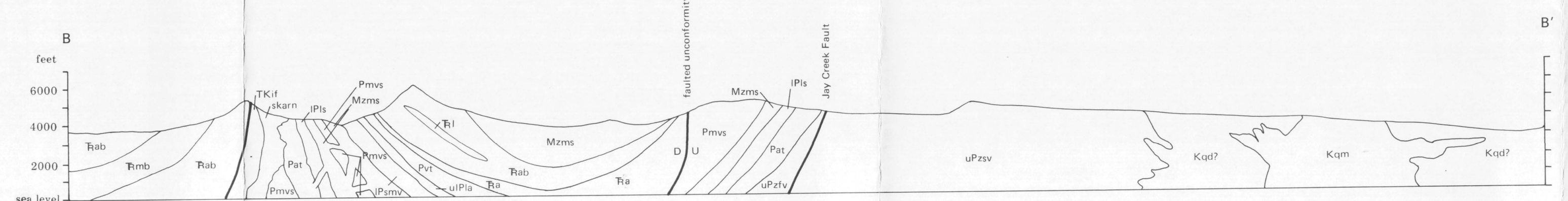
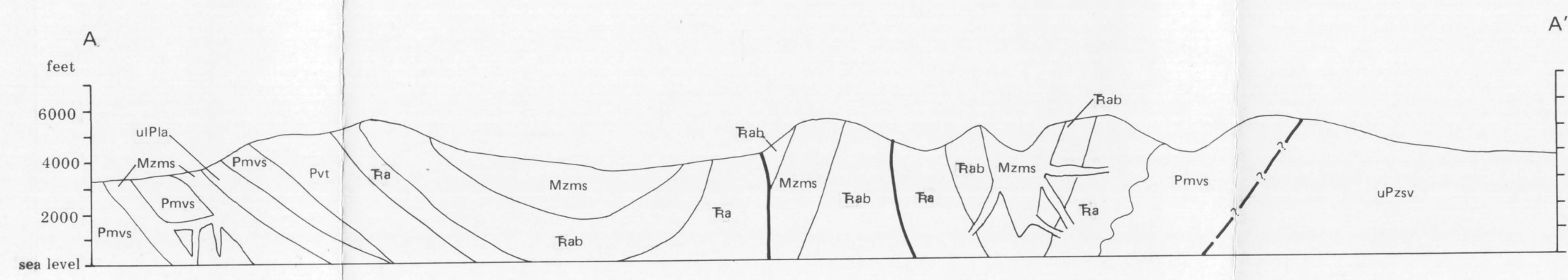
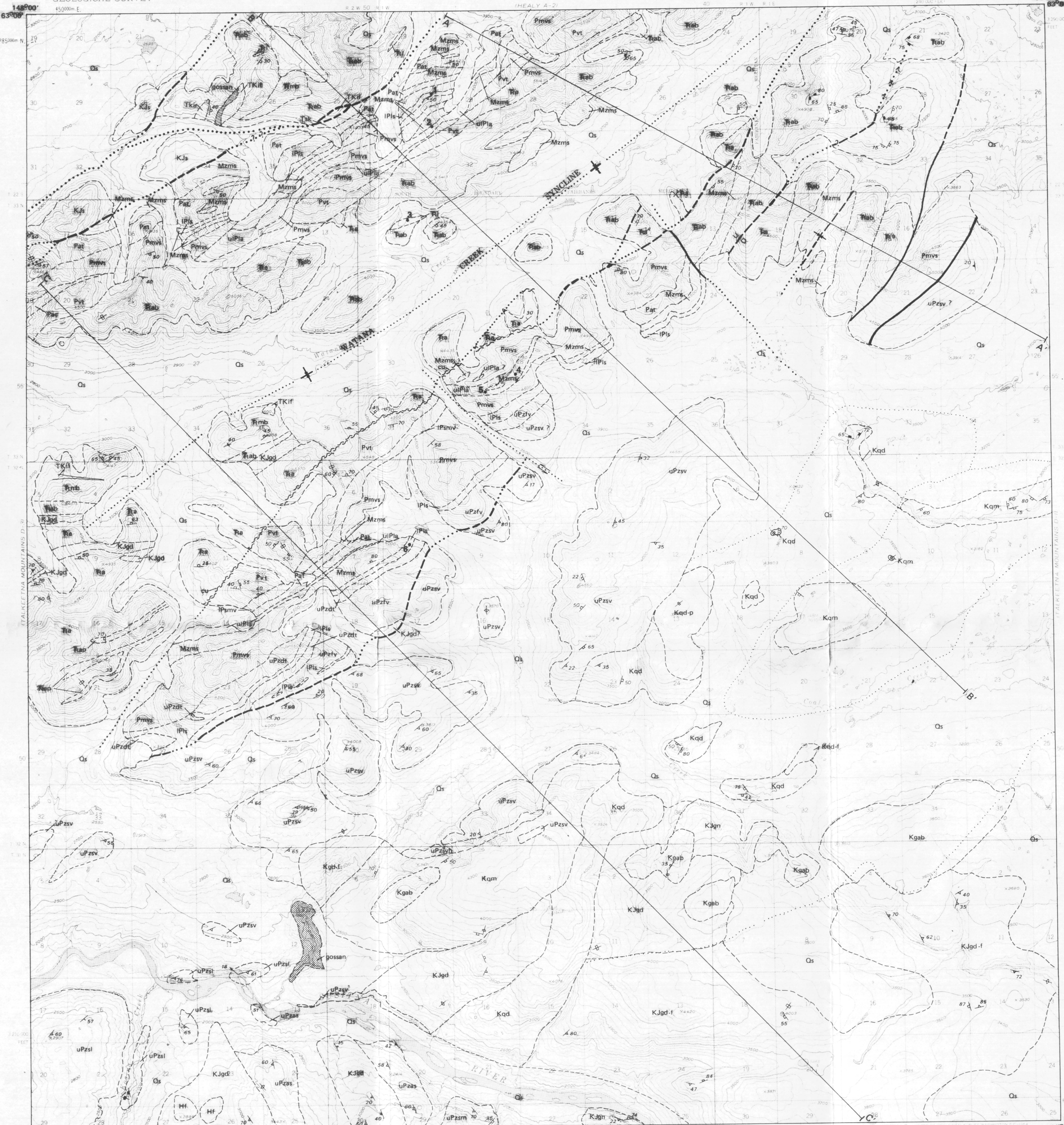


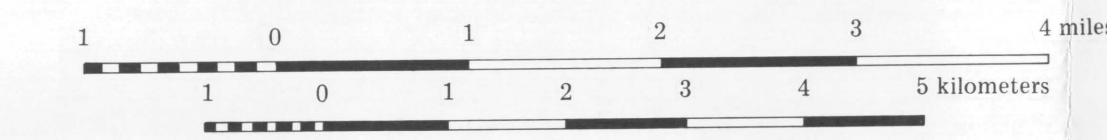
ALASKA DIVISION OF GEOLOGICAL & GEOPHYSICAL SURVEYS  
IN COOPERATION WITH U.S. BUREAU OF MINES

TALKEETNA MOUNTAINS (D-2) QUADRANGLE  
ALASKA

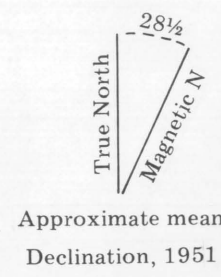
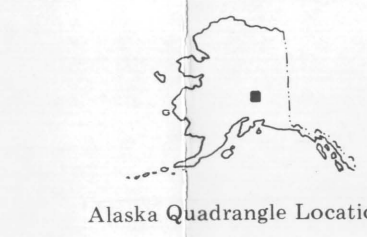


MAP SYMBOLS

- Contact, dashed where approximately located, dotted where covered
- U/D Fault, dashed where approximately located, queried where questionable, dotted where covered; U, upthrown side; D, downthrown side
- Shear Zone
- Syncline dashed where approximately located, queried where questionable, dotted where covered; U, upthrown side; D, downthrown side
- Aeromagnetic Contour
- Gossan
- Fossil Locality, see Table 1
- Strike and dip of beds
  - ∠17° Inclined
  - ∠ Vertical
- Strike and dip of joints
  - ∠28° Inclined
  - ∠60° Vertical
- Strike and dip of foliation
  - ∠20° Inclined, arrow indicates bearing and plunge of fold
  - ∠18° Vertical



CONTOUR INTERVAL 100 FEET  
DATUM MEAN SEA LEVEL



Approximate mean Declination, 1951

PRELIMINARY BEDROCK GEOLOGIC MAP OF THE TALKEETNA MOUNTAINS D-2 QUADRANGLE, ALASKA

By J.T.Kline, T.K.Bundtzen and T.E.Smith

1990

Revised, edited, and published by the Geological Survey  
Control by USGS  
Topography by photogrammetric methods from aerial photographs  
taken 1943 and corrected 1963. Map not reproducible  
Universal Transverse Mercator projection, 1927 North American datum,  
10,000 feet and based on a spheroid (WGS 60), zone 5,  
1000 meters, universal Transverse Mercator and zone  
code 6, shown in blue  
Land lines represent unimproved and unimproved locations  
controlled by the Bureau of Land Management.  
Photod. P. 3, P. 10, Fairbanks Meridian, and S. 1, Seward Meridian