



THIS REPORT HAS NOT BEEN REVIEWED FOR TECHNICAL CONTENT (EXCEPT AS STATED IN THE TEXT) OR FOR CONFORMITY TO THE EDITORIAL STANDARDS OF DGGs.

90DNS124 interbedded
kmp. tuff
sandstone
+ siltstone
+ silty shale
Texas Cr. prospect

Double Andesite Property
HARLINGTON GLACIER
intercalated andesite
90DNS128 intercalated sandstone
argillite
cherty argillite
90RR63 cherty tuffs
cut by Texas Creek plutonic dikes to 50m thick
mineralized dike 2-25m thick
Sulfenite + pyrite + sphalerite + calcopryrite

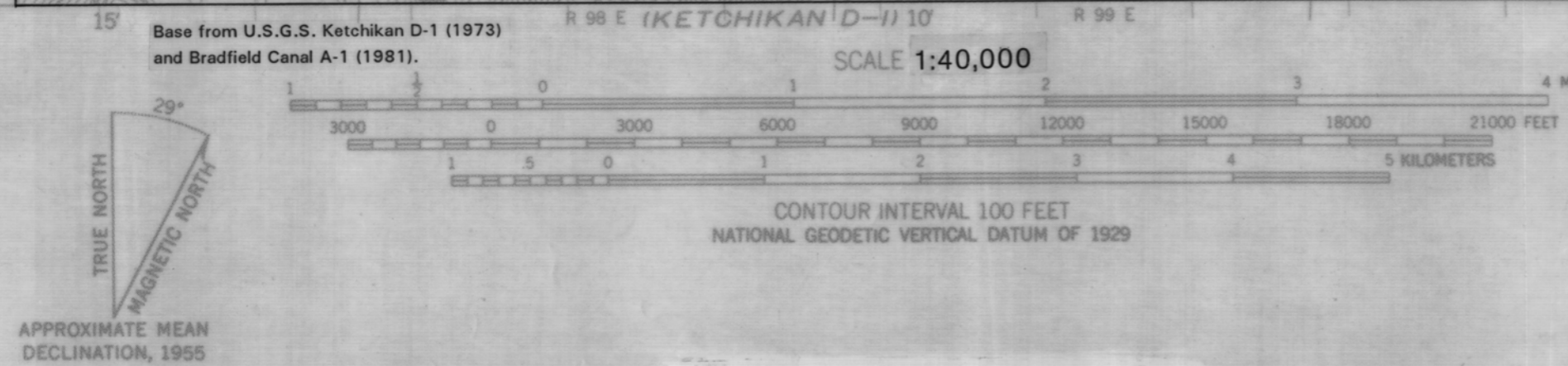
90WG209
90DNS108
90WG208
90WG207
90WG206
90DNS105
90DNS134
argillite
andesite
diolite
shaded
qtz
Wargillite
reoliths

90DNS111
Texas Cr. and locally 11620 I Cm
Minor qtz
epidote + calcite
veining
90DNS133

90RR56
90WG216
meta-schist
argillite
andesite

90RR55
Eggenstein
near-gray, 3-4 mm

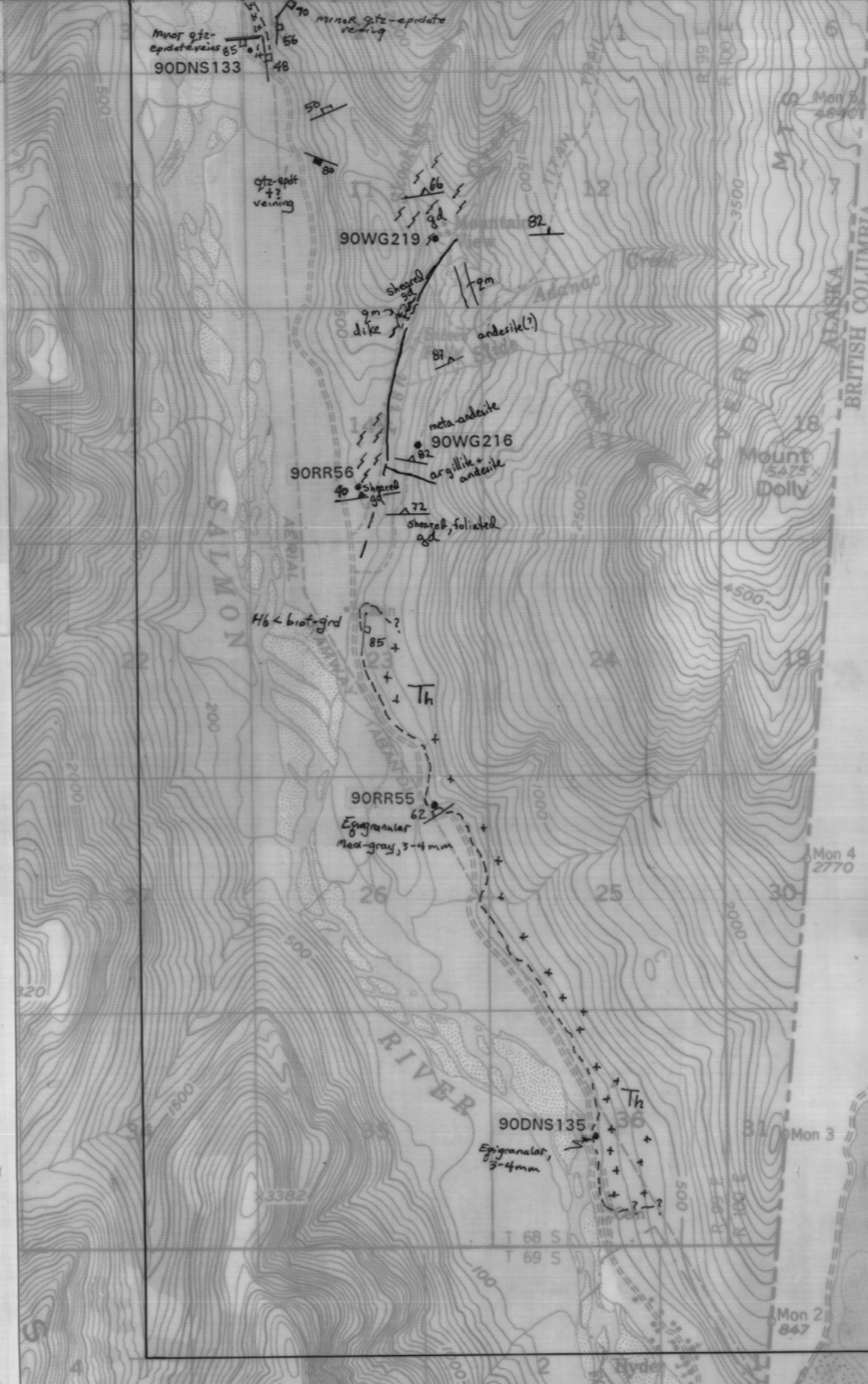
90DNS135
Eggenstein
2-4 mm



Base from U.S.G.S. Ketchikan D-1 (1973) and Bradfield Canal A-1 (1981).
SCALE 1:40,000

CONTOUR INTERVAL 100 FEET
NATIONAL GEODETIC VERTICAL DATUM OF 1929

GEOLOGIC NOTES FROM THE HYDER DISTRICT, ALASKA
BY
D.N.SOLIE, R.R.REIFENSTUHL, AND W.G.GILBERT
1991



6207000
55°00'
1540000
FEET

BRITISH COLUMBIA

STEWART 0.3 MI.
Hyder
Mon 3
Mon 4
Mon 21
Mon 2770
Mon 847