

August 1, 1938

Plate No.1

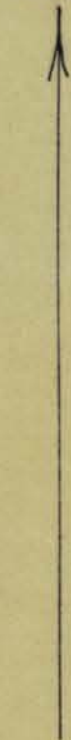
Sketch of
Surface Workings

Owners,
W. A. Stiles & N. S. Smith
Anchorage, Alaska

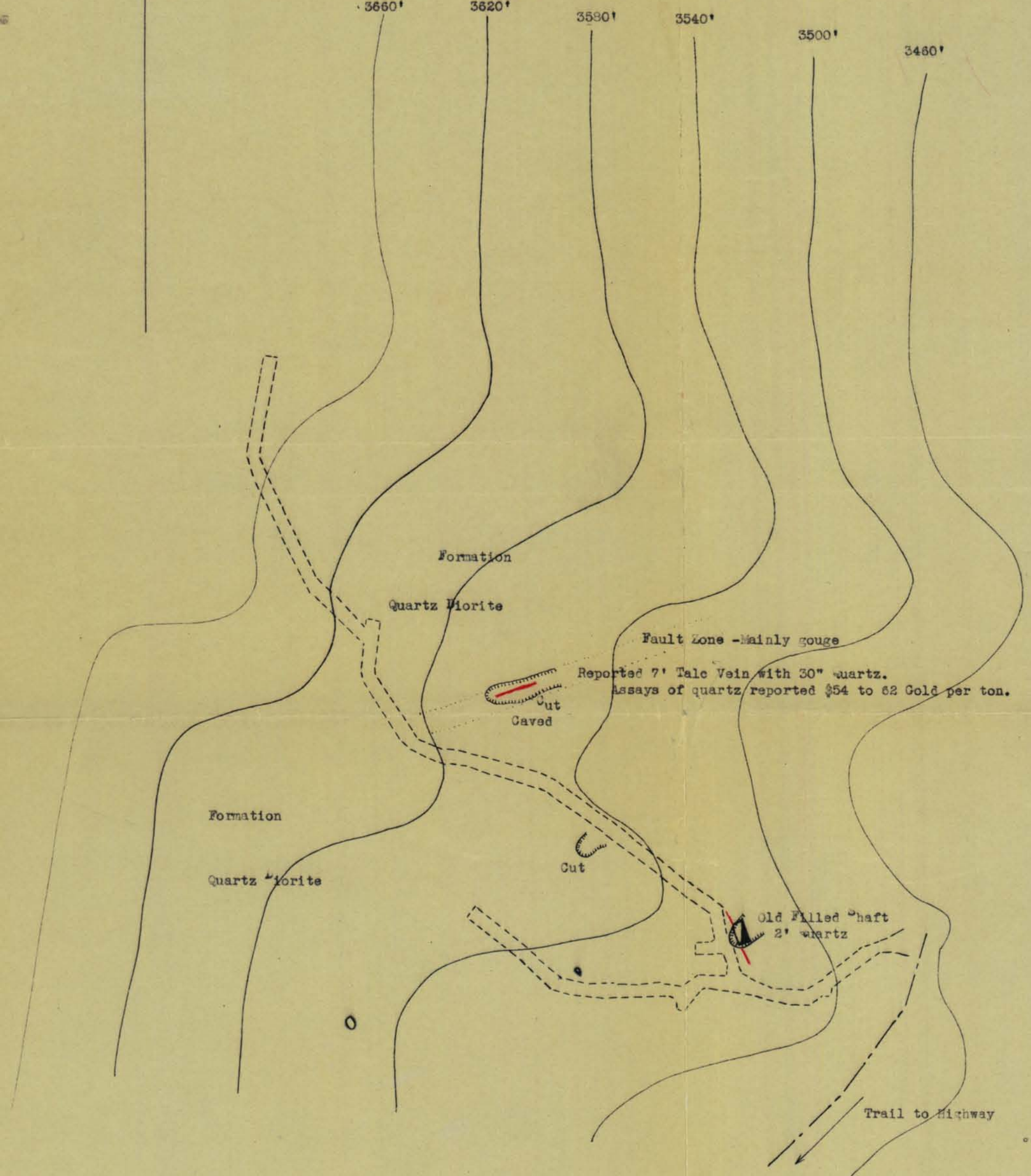
STILES PROPERTY

Reed Creek
Willow Creek District
Alaska

North



3660' 3620' 3580' 3540' 3500' 3460'



Reported 7' Talc Vein with 30" quartz.
Assays of quartz reported \$54 to 62 Gold per ton.

Aneroid & Brunton

Contour Interval 40'

Scale 1" = 40'

Sketch by,
J. C. Roehm, Associate Engineer