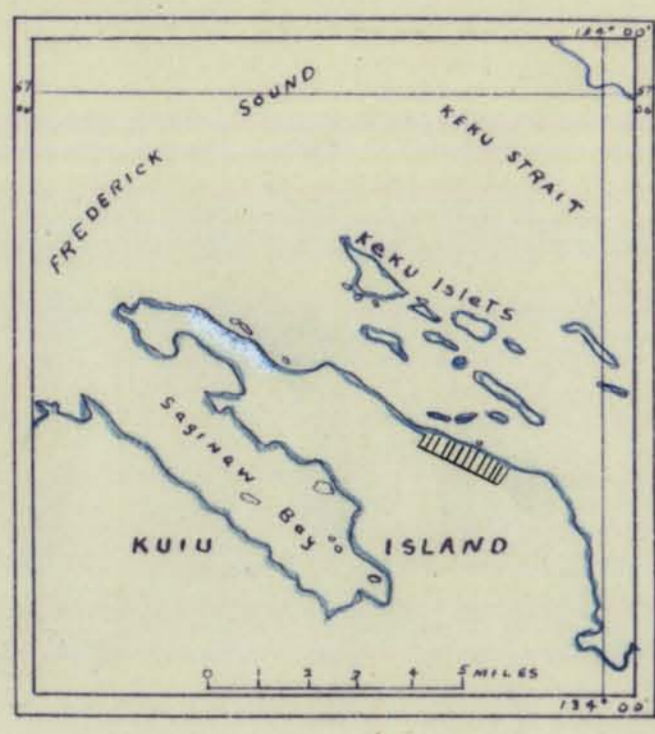
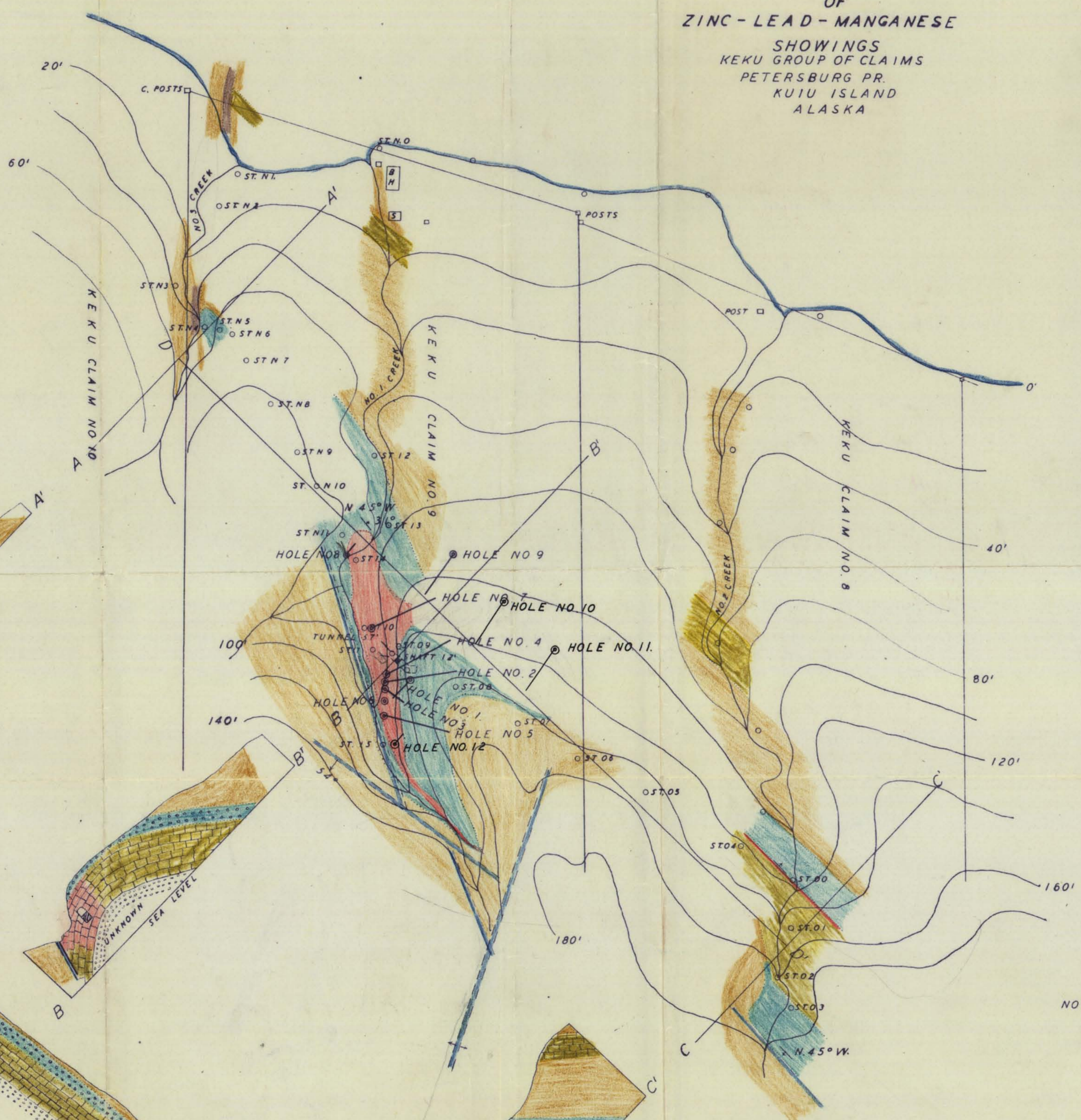


GEOLOGICAL SKETCH
OF
ZINC - LEAD - MANGANESE
SHOWINGS
KEKU GROUP OF CLAIMS
PETERSBURG PR.
KUIU ISLAND
ALASKA

NORTH



LOCATION SKETCH
OF
KEKU GROUP OF CLAIMS



- LEGEND**
- VOLCANIC LAVAS
ANDESITE ETC
 - VOLCANIC AGGLOMERATE
CALCAREOUS IN PART
CONTAINS SLIGHT MINERALIZATION
OF ZINC, LEAD, & MANGANESE
MINERALS
 - DOLOMITIC LIMESTONE STRATA
CONTAINS LOCALIZED AREAS
(SHOWN IN RED) OF PARTIAL
REPLACEMENT BY SPHALERITE
GALENA SIDERITE PYRITE
MANGANESE CARBONATES SILICATES
& OXIDES AND ALTERATION PRODUCTS
 - BASIC GREEN DIKE (DIABASE ?)
APPEARS TO DISPLACE LIMESTONE
STRATA DEVELOPMENT INSUFFICIENT
TO DETERMINE
 - LIGHT COLORED AGGLOMERATE
 - FAULT ZONES
 - DIAMOND DRILL HOLES

NOTE - CHANNEL SAMPLING OF SHOWINGS
ALONG CREEK NO. 1 RECOMMENDED.
COMPLETE SAMPLING NOT ATTEMPTED
DUE TO INSUFFICIENT SURFACE WORK
ON DATE OF EXAMINATION.

MAY 6, 1941.

GEOLOGY & SKETCH BY
J. C. ROEHM
ASSOCIATE ENGINEER
REG. E-11. TERR. OF ALASKA

