

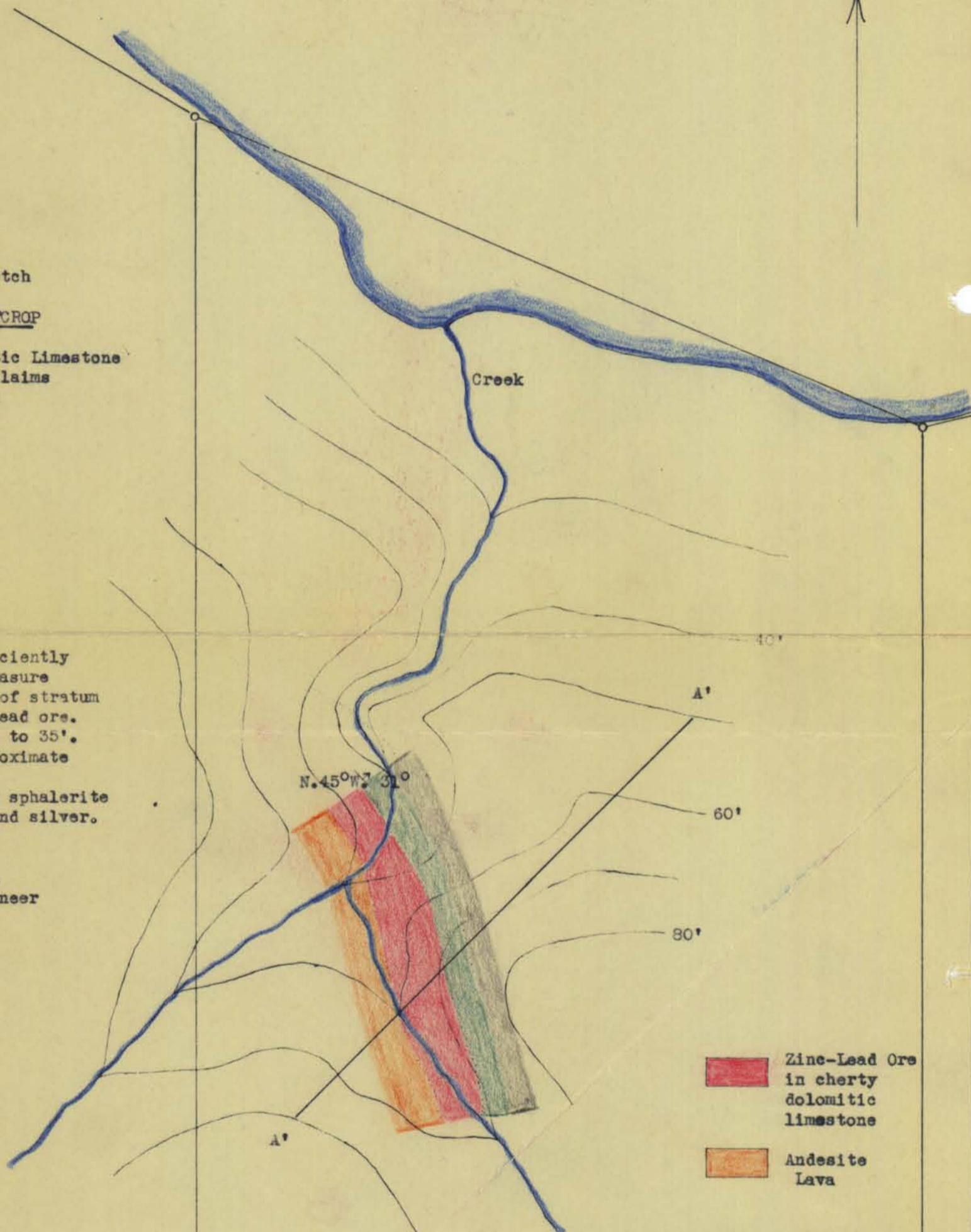
North

Geological Sketch  
of  
ZINC\*LEAD\* OUTCROP  
in  
Carboniferous Dolomitic Limestone  
Keku Group of Claims  
Kuiu Island  
Alaska

Outcrop not sufficiently  
uncovered to measure  
definite thickness of stratum  
containing Zinc-Lead ore.  
Estimated thickness 25' to 35'.  
Contacts & Dips Approximate

\* Ore mainly massive sphalerite  
with some galena and silver.

By  
J. C. Roehm  
Associate Engineer



Keku No. 9. Claim

- Zinc-Lead Ore  
in cherty  
dolomitic  
limestone
- Andesite  
Lava
- Calcareous  
Conglomerate
- Limestone

Cross-section  
showing dip along  
line A---A' of  
ore stratum.

