

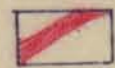
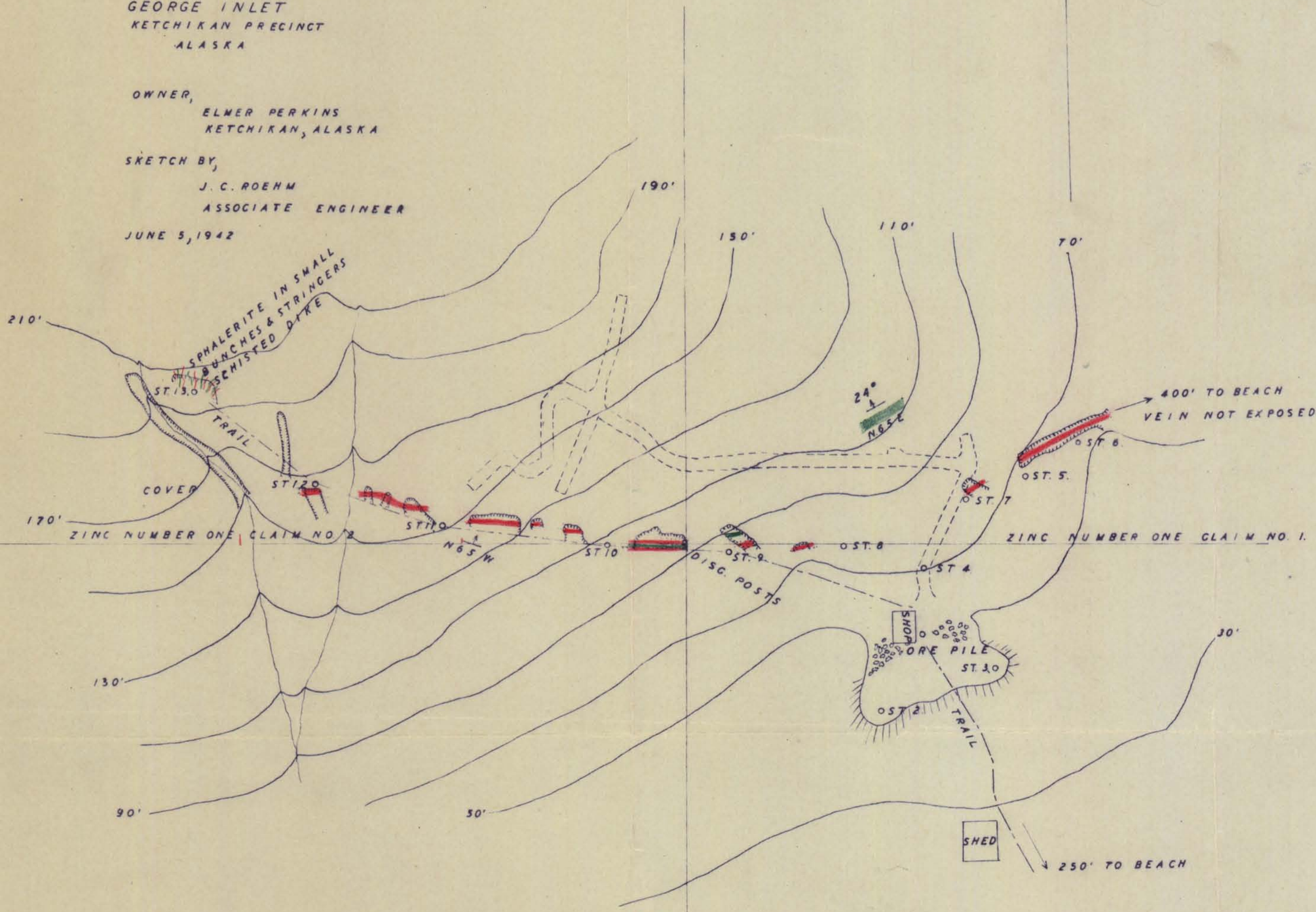
SKETCH OF  
ZINC NUMBER ONE WORKINGS  
(MAHONEY PROSPECT)  
GEORGE INLET  
KETCHIKAN PRECINCT  
ALASKA

OWNER,  
ELMER PERKINS  
KETCHIKAN, ALASKA

SKETCH BY,  
J. C. ROEHM  
ASSOCIATE ENGINEER

JUNE 5, 1942

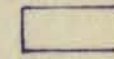
NORTH



COMPOUND VEIN



ACIDIC DIKES



BLACK SCHISTED SLATE