



DESCRIPTION OF MAP UNITS

UNCONSOLIDATED DEPOSITS

- ALLUVIAL DEPOSITS**
- Qa ALLUVIAL DEPOSITS, UNDIFFERENTIATED (HOLOCENE)
 - Qaa ACTIVE-FLOODPLAIN ALLUVIUM (HOLOCENE)
 - Qab ABANDONED-FLOODPLAIN ALLUVIUM (HOLOCENE)
 - Qaf ALLUVIAL-FAN DEPOSITS (HOLOCENE)
 - Qai INACTIVE-FLOODPLAIN ALLUVIUM (HOLOCENE)
 - Qat ALLUVIAL TERRACE DEPOSITS (HOLOCENE)
- COLLUVIAL DEPOSITS**
- Qc COLLUVIUM (QUATERNARY)
 - Qcf MIXED COLLUVIUM AND ALLUVIUM (QUATERNARY)

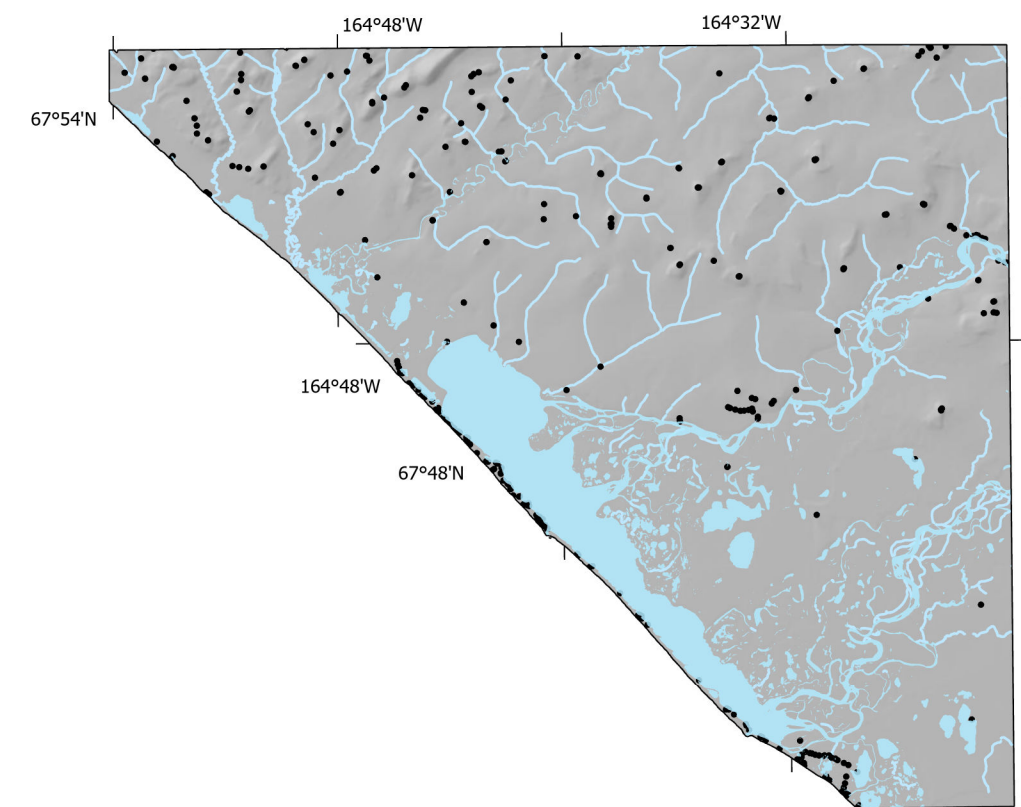
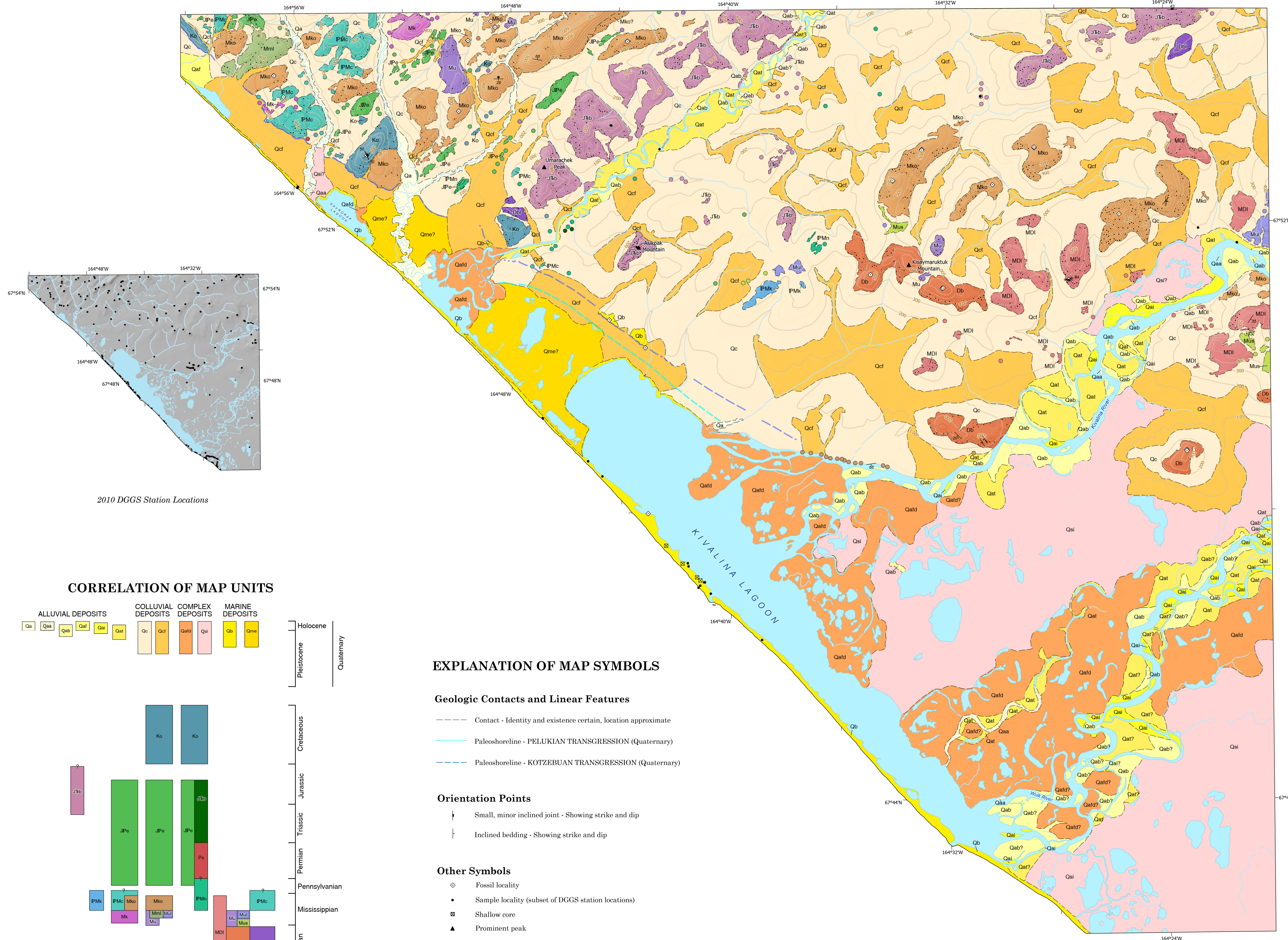
- COMPLEX DEPOSITS**
- Qafd ALLUVIAL-FAN DELTA DEPOSITS (QUATERNARY)
 - Qsi LOWLAND SILT (QUATERNARY)
- MARINE DEPOSITS**
- Qb BEACH DEPOSITS, UNDIFFERENTIATED (QUATERNARY)
 - Qme ESTUARINE DEPOSITS (QUATERNARY)

SEDIMENTARY ROCKS

- Ko OKPIKRUAK FORMATION (CRETACEOUS)
- JPe ETIVLUK GROUP (JURASSIC TO PENNSYLVANIAN)
- JSo OTUK FORMATION (JURASSIC AND TRIASSIC)
- Ps SIKSIKPUK FORMATION (PERMIAN)
- PMk KUNA FORMATION (PENNSYLVANIAN AND MISSISSIPPIAN)
- PMc BLACK CHERT (PENNSYLVANIAN? AND MISSISSIPPIAN)
- Mko KOGRUK FORMATION (MISSISSIPPIAN)
- PMn NUKA FORMATION (PENNSYLVANIAN? AND MISSISSIPPIAN)
- MDi LIMESTONE AND DOLOMITE (MISSISSIPPIAN OR DEVONIAN)
- Mk KAYAK SHALE (MISSISSIPPIAN)
- Mnl MICRITIC LIMESTONE (MISSISSIPPIAN)
- Mu Utukok Formation (Mississippian)
- Mu Buff limestone member (Mississippian)
- Mus Sandstone member (Mississippian)
- Db BAIRD GROUP, UPPER PART (DEVONIAN)
- Dcl BAIRD GROUP, UPPER PART LIMESTONE (DEVONIAN)

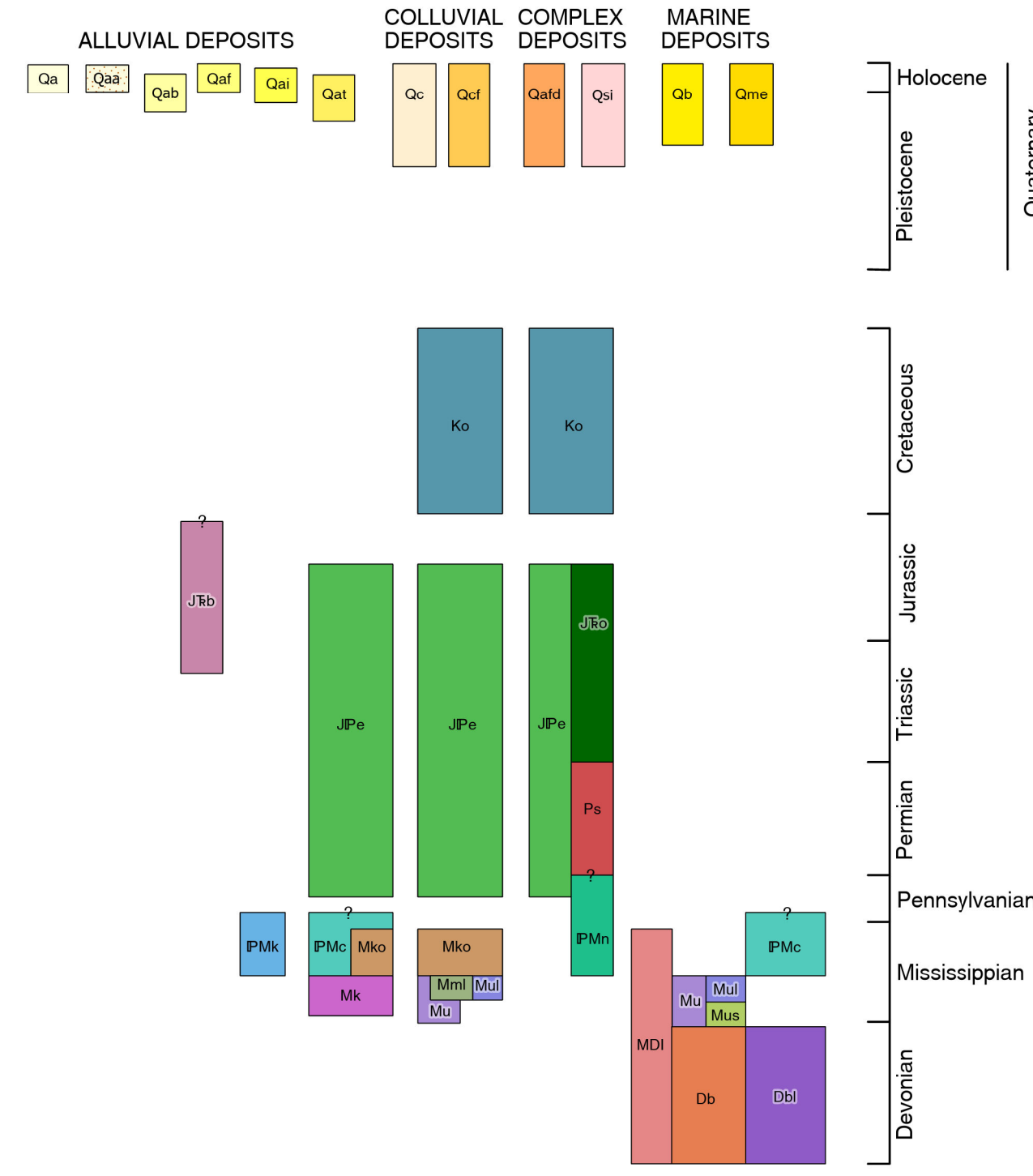
- IGNEOUS ROCKS**
- JSo BASALT (JURASSIC? AND TRIASSIC)

- HYDROLOGIC FEATURES**
- water WATER



2010 DGGS Station Locations

CORRELATION OF MAP UNITS

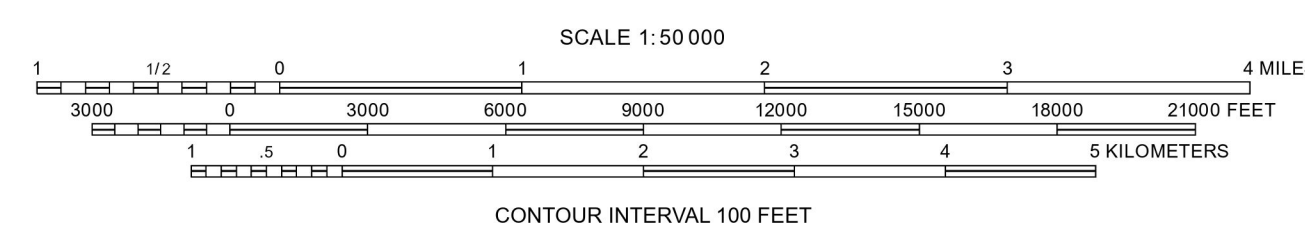


EXPLANATION OF MAP SYMBOLS

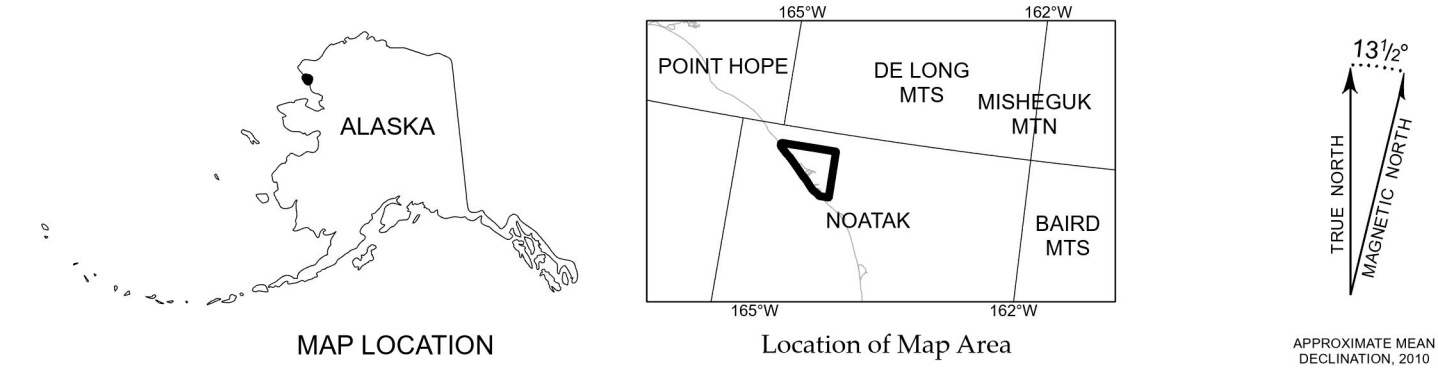
- Geologic Contacts and Linear Features**
- Contact - Identity and existence certain, location approximate
 - Paleoshoreline - PELUKIAN TRANSGRESSION (Quaternary)
 - Paleoshoreline - KOTZEBUAN TRANSGRESSION (Quaternary)
- Orientation Points**
- Small, minor inclined joint - Showing strike and dip
 - Inclined bedding - Showing strike and dip
- Other Symbols**
- Fossil locality
 - Sample locality (subset of DGGS station locations)
 - Shallow core
 - Prominent peak
 - Subcrops covered by a thin (<0.9 m) veneer of unconsolidated surficial material derived in part from frost-heaved, fractured and weathered bedrock.

SURFICIAL-GEOLGIC MAP OF THE KIVALINA AREA, NORTHWEST ALASKA

by
T.D. Hubbard¹ and G.J. Wolken¹
2024



Affiliations:
¹ Alaska Division of Geological & Geophysical Surveys, 3354 College Rd, Fairbanks, AK 99709



ACKNOWLEDGMENTS

We thank Kandace Krejci for her assistance with fieldwork. A thorough review by De Anne Stevens helped us to improve the map. This work was funded by the U.S. Geological Survey National Cooperative Geologic Mapping Program, award numbers G10AC00321, 2010, and G22AC00606, 2022, and State of Alaska Capital Improvement Project funds. The views and conclusions contained in this document are those of the authors and should not be interpreted as necessarily representing the official policies, either expressed or implied, of the U.S. Government.

The State of Alaska makes no expressed or implied warranties (including warranties for merchantability and fitness) with respect to the character, functions, or capabilities of the electronic data or products or their appropriateness for any user's purposes. In no event will the State of Alaska be liable for any incidental, indirect, special, consequential, or other damages suffered by the user or any other person or entity whether from the use of the electronic services or products or any failure thereof or otherwise. In no event will the State of Alaska's liability to the Requestor or anyone else exceed the fee paid for the electronic service or product.

Publications produced by the Division of Geological & Geophysical Surveys (DGGS) are available for download from the DGGS website (dgg.alaska.gov). Publications on paper or digital media can be examined or purchased in the Fairbanks office:

STATE OF ALASKA
DEPARTMENT OF NATURAL RESOURCES
DIVISION OF GEOLOGICAL & GEOPHYSICAL SURVEYS
3354 College Road • Fairbanks, Alaska 99709-3707
Phone 907-451-5010 • Fax 907-451-5150
email: dggpubs@alaska.gov • website: dgg.alaska.gov

