

Alaska Division of Geological & Geophysical Surveys Minerals Program: Projects, Products and Opinion Survey Updates

Dr. Erin Campbell
Director and Alaska State Geologist

Alaska Miners Association Online Meeting
March 27, 2026



Alaska Division of Geological & Geophysical Surveys (DGGS)

Statutory Mission:

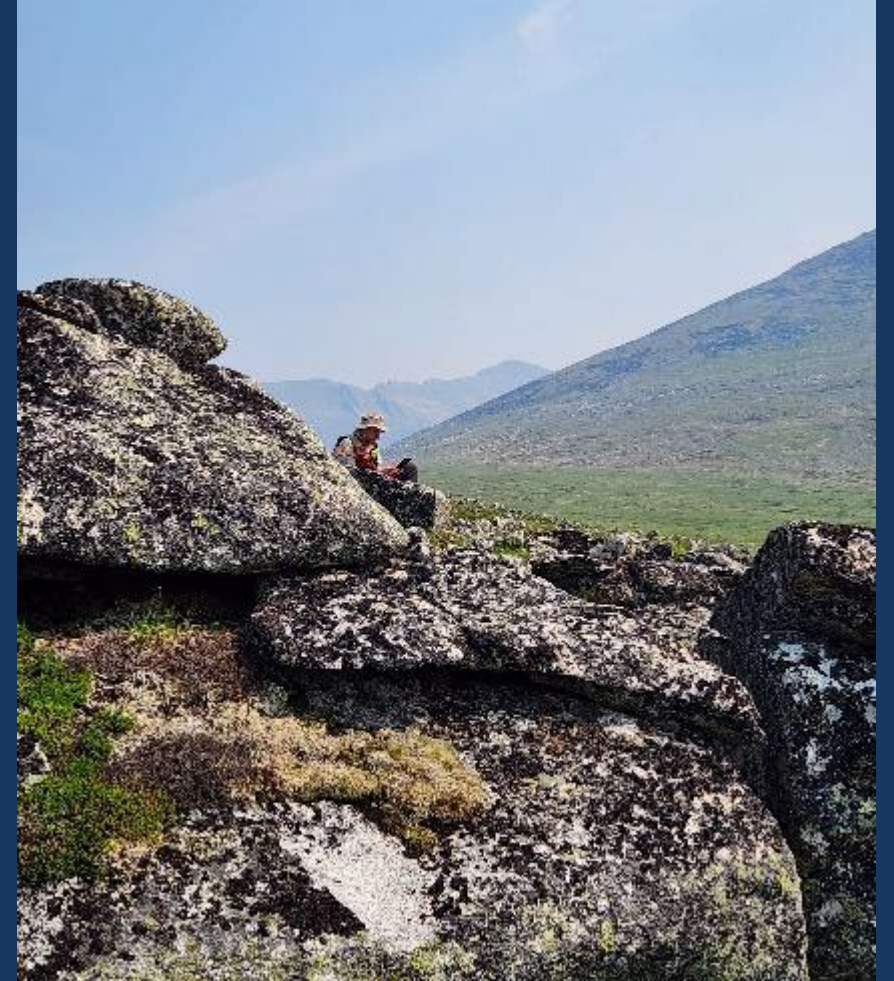
Determine the potential of Alaskan land for production of metals, minerals, fuels, and geothermal resources; the locations and supplies of groundwater and construction materials; and the potential geologic hazards to buildings, roads, bridges, and other installations and structures.

(AS 41.08.020)



DGGS Mineral Resources Staff

- Acting Section Chief
 - Travis Naibert
- Geologists
 - Wes Buchanan
 - Jamshid Moshrefzadeh
 - Rainer Newberry
 - Dave (Zoom) Szumigala
 - Connor Truskowski
 - Evan Twelker
 - Kelly Wilson
 - Chris Wyatt
- Geophysicists
 - Logan Fusso
 - Eric Petersen
- Interns
 - Michael Barrera
 - Lily Norwood



Online Mineral Resource Opinion Survey



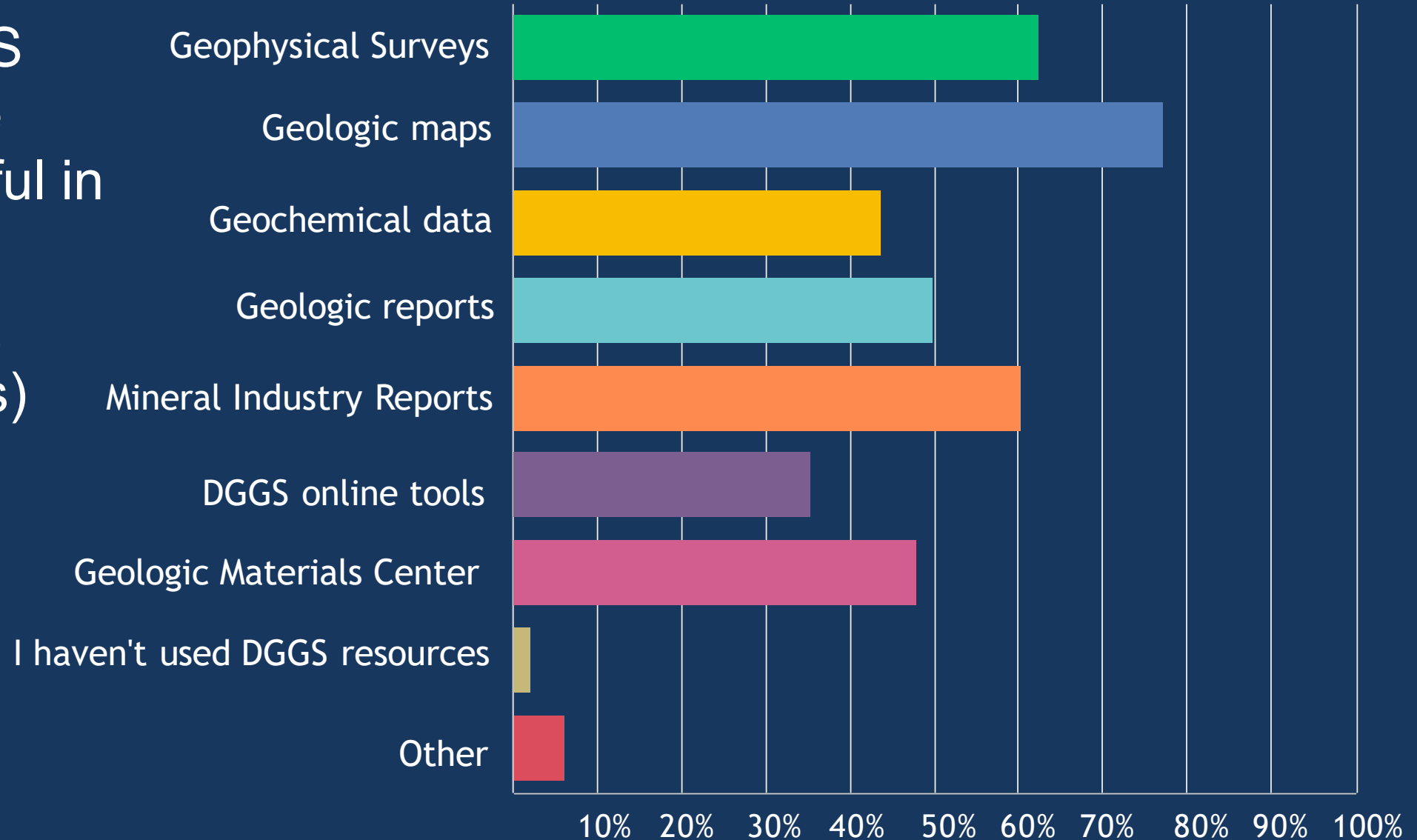
- Goal—Ensure DGGs Mineral Resources Section is working to best benefit the residents of Alaska through success of the Mineral Industry
- 48 responses so far



Fieldwork in the Yukon-Tanana Upland

Online Survey—DGGS Products

Q1-What DGGS resources have been most useful in your work?
(You can select multiple options)

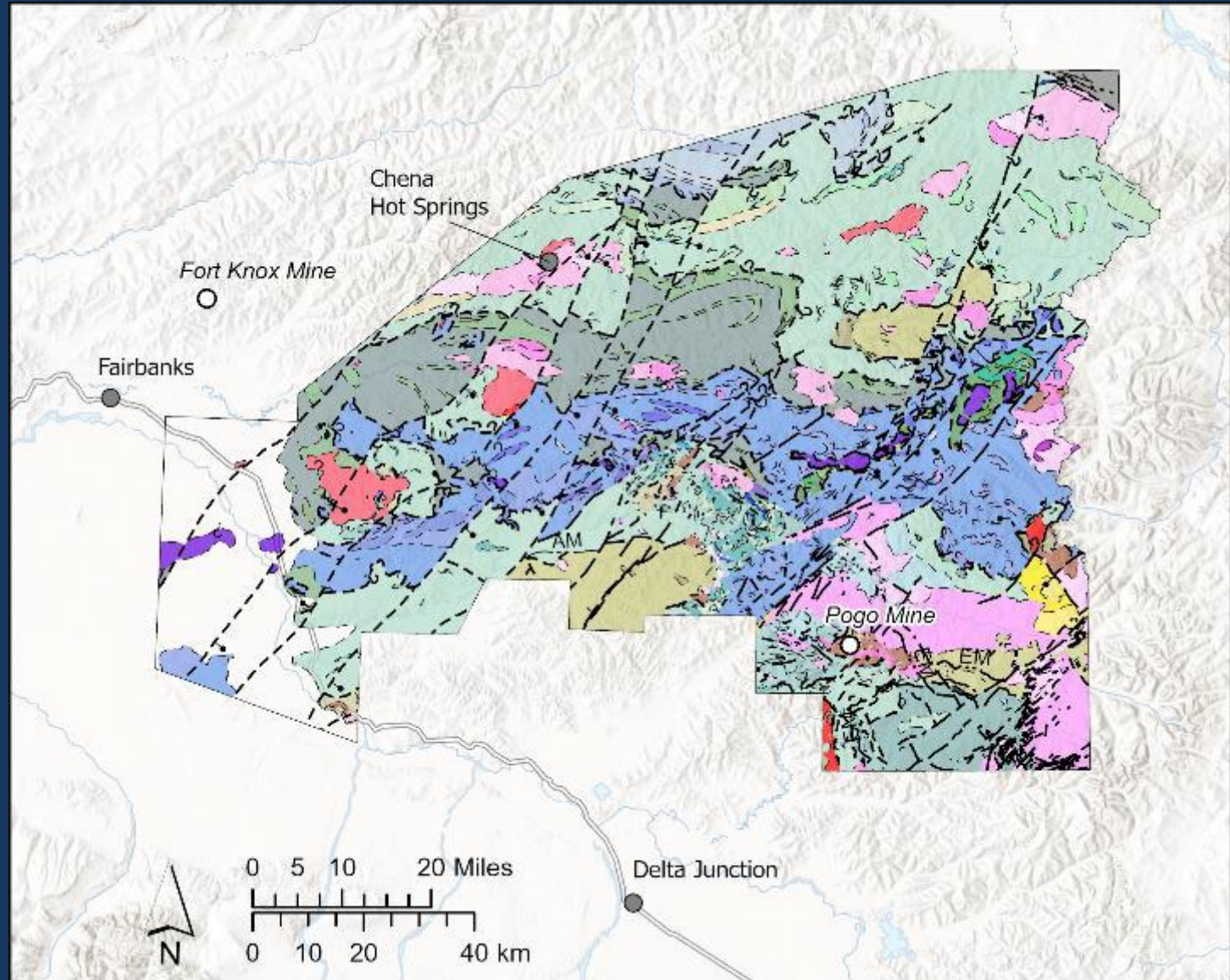


Geologic Maps #1 at 77%

Coming this summer....

Chena Geologic Mapping Project

- Upgrades geologic data in the Yukon-Tanana Upland
- ~14,400 km² (~5,560 mi²) area at 1:100,000 scale
- Includes Pogo Mine and surrounding prospects (Au, with potential to produce Bi and Te), and the Furs W-skarn prospect



Geophysical Surveys #2 at 62%

<https://dggs.alaska.gov/pubs/geophysics>



Department of Natural Resources
GEOLOGICAL & GEOPHYSICAL SURVEYS

HOME POPULAR GEOLOGY MAPS & DATA PUBLICATIONS GEOLOGIC MATERIALS

State of Alaska / Natural Resources / Geological & Geophysical Surveys / Geophysics / Pubs

Airborne Geophysical Surveys

Magnetic, electromagnetic, and radiometric geophysical data

This list of airborne geophysical surveys provides links to metadata, options for viewing, downloading, and ordering data. Learn more about [other available geophysical data](#).

[Alaska Highway Corridor \(2005\)](#)

[Aniak \(2000\)](#)

[Beaver Creek \(2012\)](#)

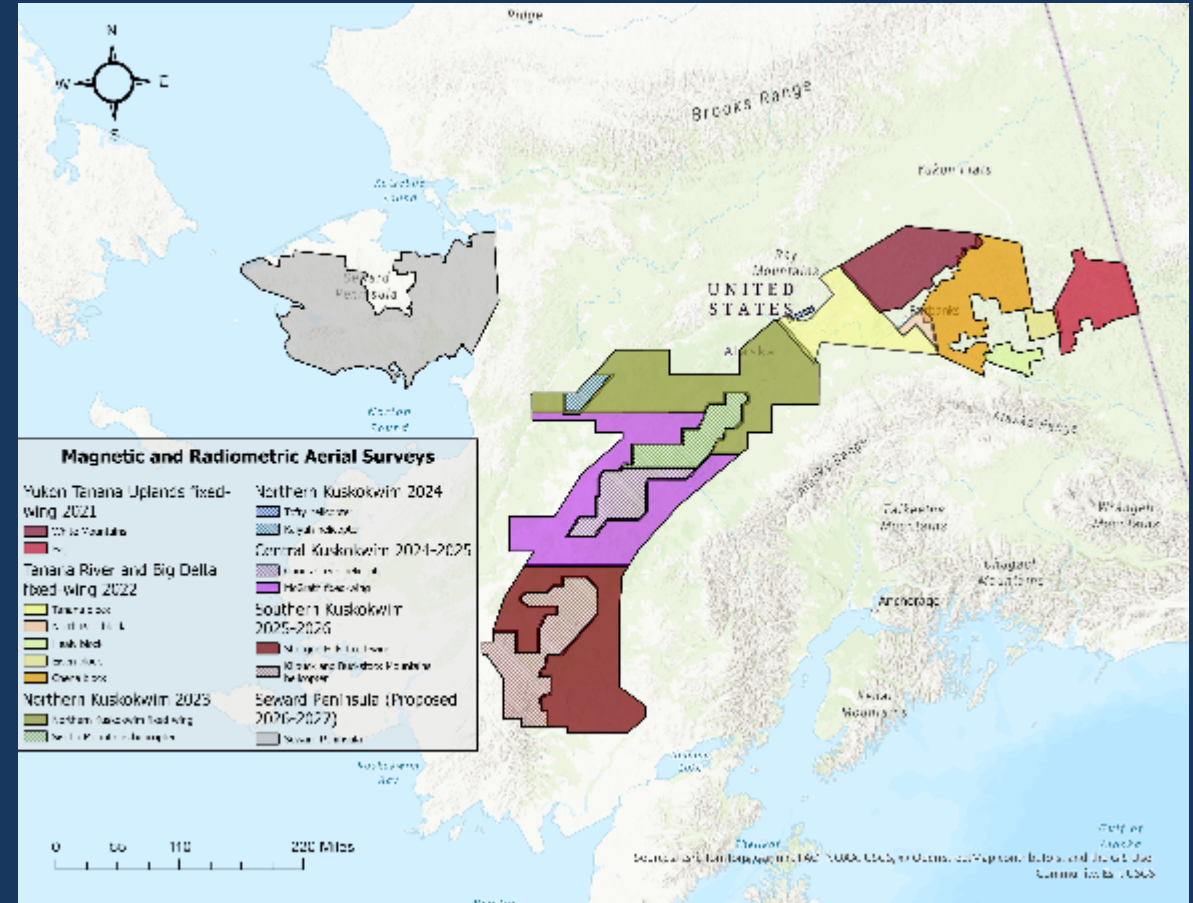
[Beaver Creek, Fox Hills, South Dishna River, Aniak, Sleetmute, and Iditarod Merged Grids \(2015\)](#)

[Bethel \(1994\)](#)

[Black Mountain \(2005\)](#)

[Black Mountain, Liscum, Goodpaster, and Salcha River - Pogo Merged Grids \(2015\)](#)

[Bonnifield Mining District \(2006\)](#)



New 2025 Data Release! Kuskokwim Mineral Belt EM

New Time-Domain EM Geophysical Surveys

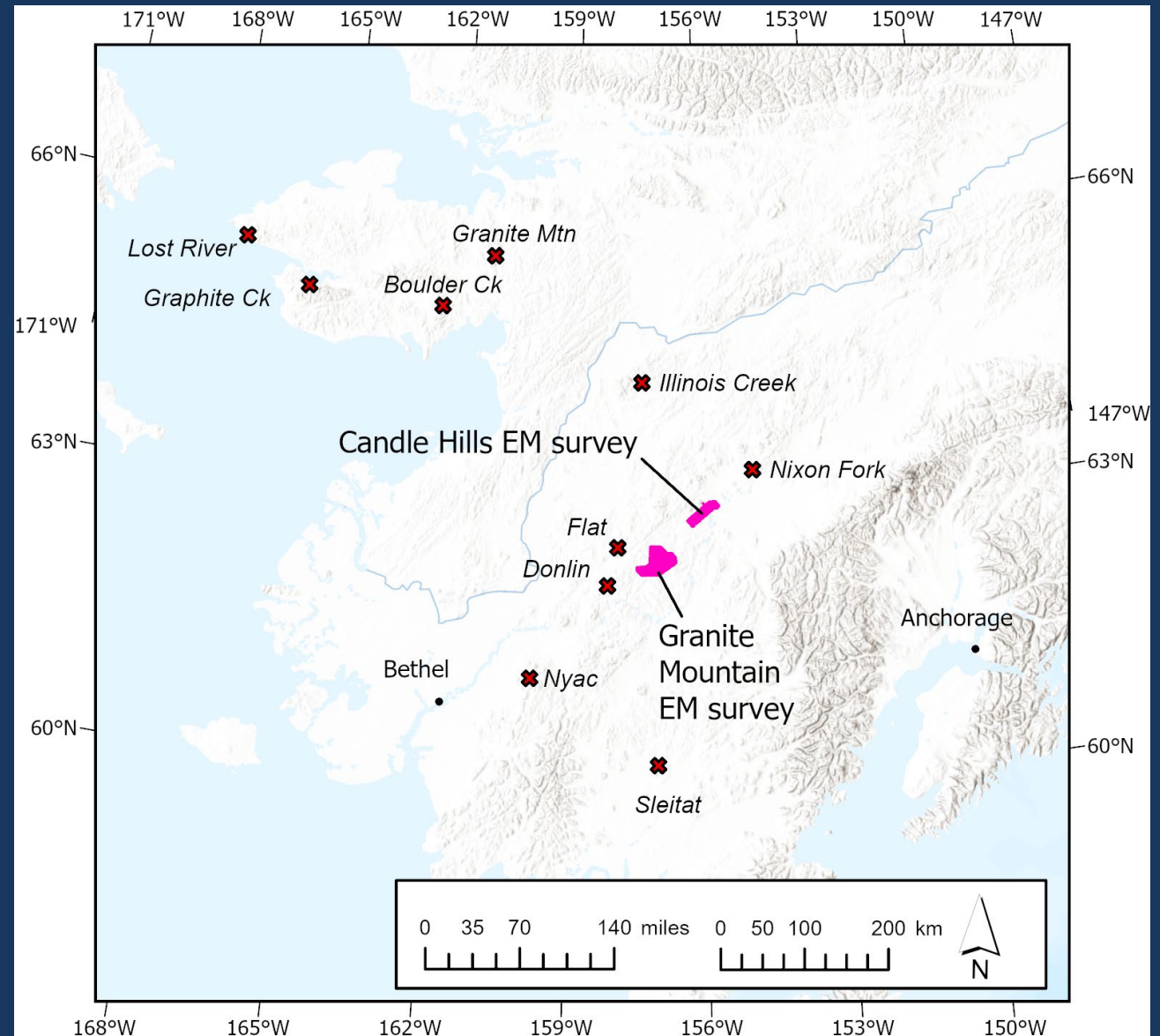
- Kuskokwim Mineral Belt
 - Granite Mountain
 - Candle Hills
 - Prospective lands not previously surveyed by DGGS EM program
- Gold, antimony mineralization
- Funded by State of Alaska capital funds and Doyon Ltd.



Candle Hills survey



Granite Mountain survey



New Time-Domain EM Geophysical Surveys

- Geophysical inversions provide subsurface information down to about 300 m depth
 - Intrusions host mineralization—high resistivity in EM survey
 - Sedimentary country rock and faults have low resistivity
- New exploration targets
- Adding value to State Lands & promoting exploration investment

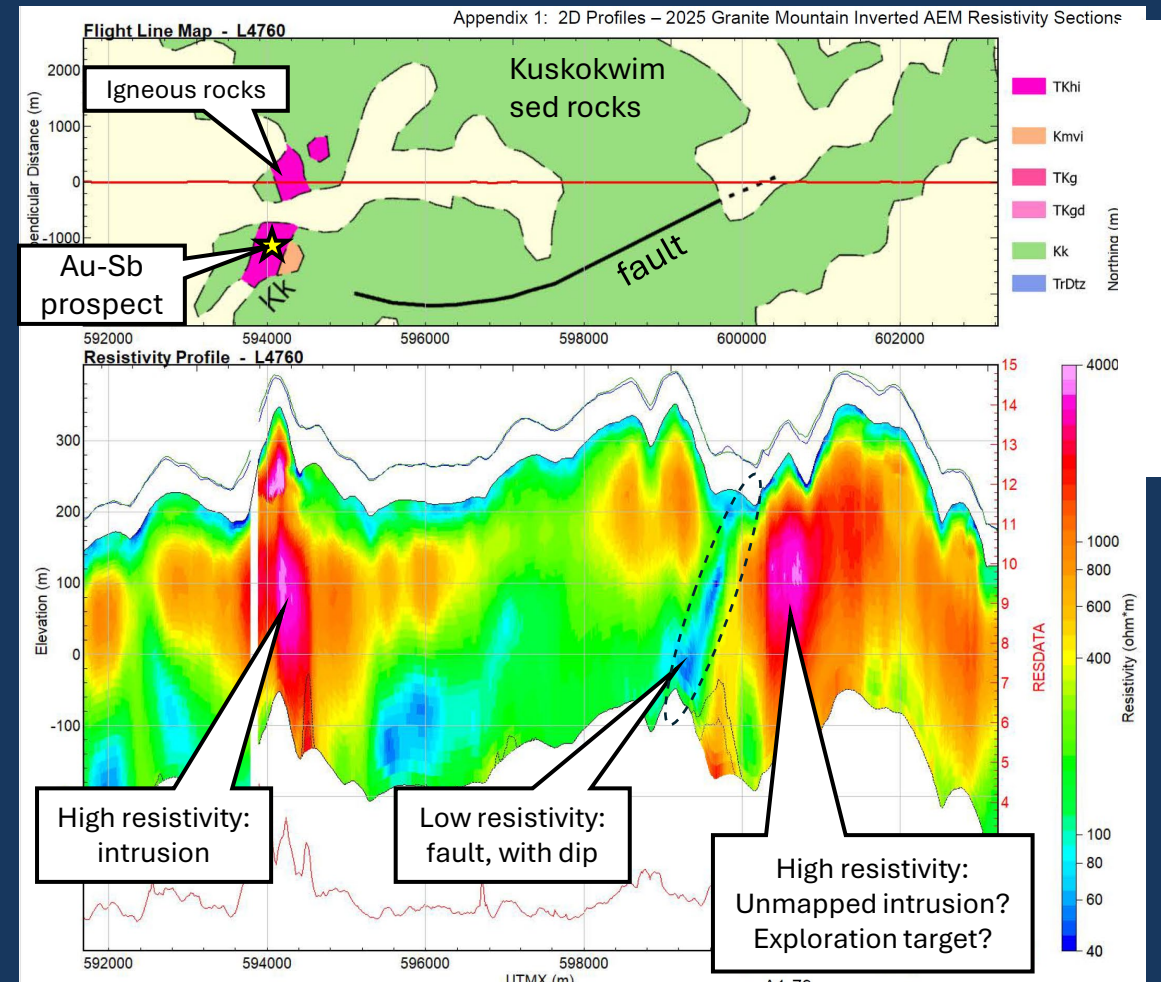


Candle Hills survey



Granite Mountain survey

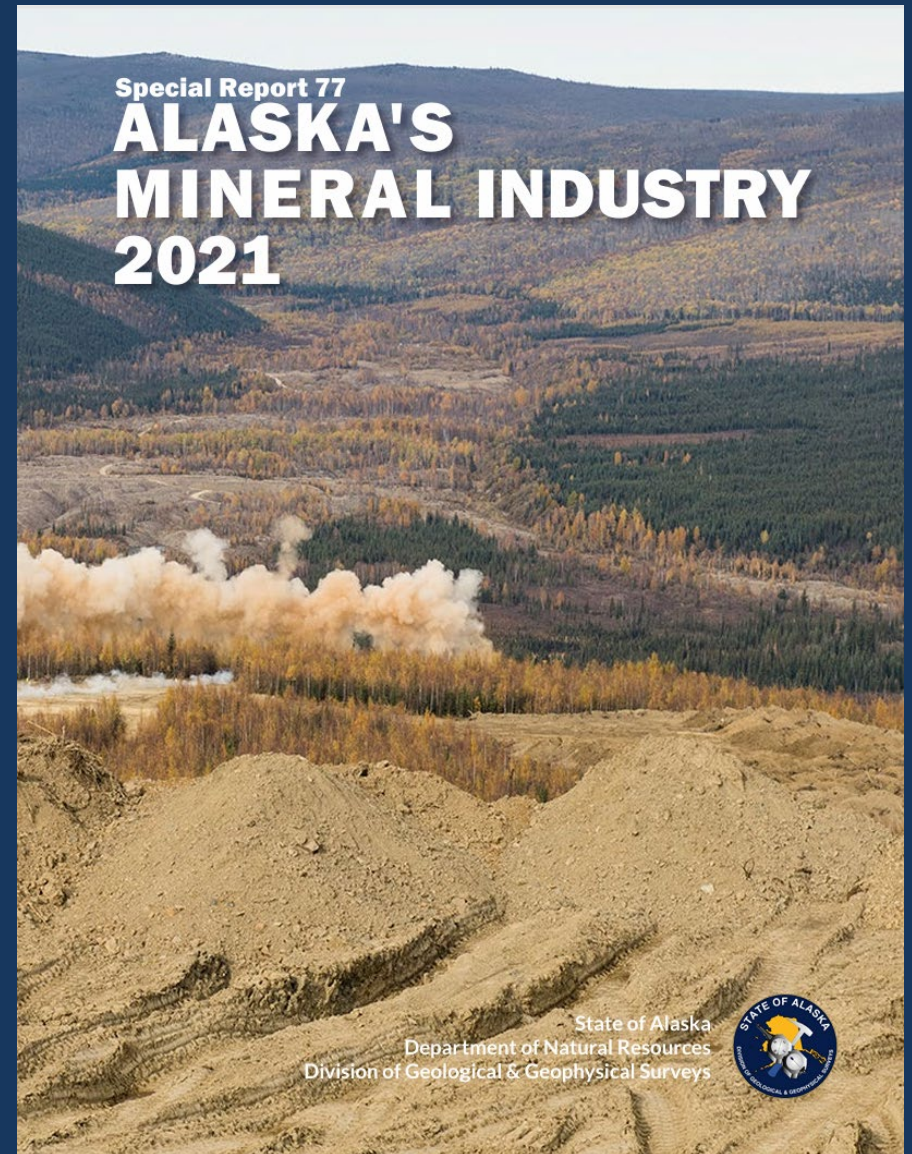
Example survey line and resistivity cross section:



Mineral Industry Reports #3 at 60%

- Employment
- Government revenue from mining
- Minerals-related government activity
- Exploration
- Development and production
- Drilling

The Division of Geological & Geophysical Surveys tracks and reports on Alaska's mineral industry, in accordance with Alaska Statute 27.05.050-060.



Geologic Reports #4 at 50%

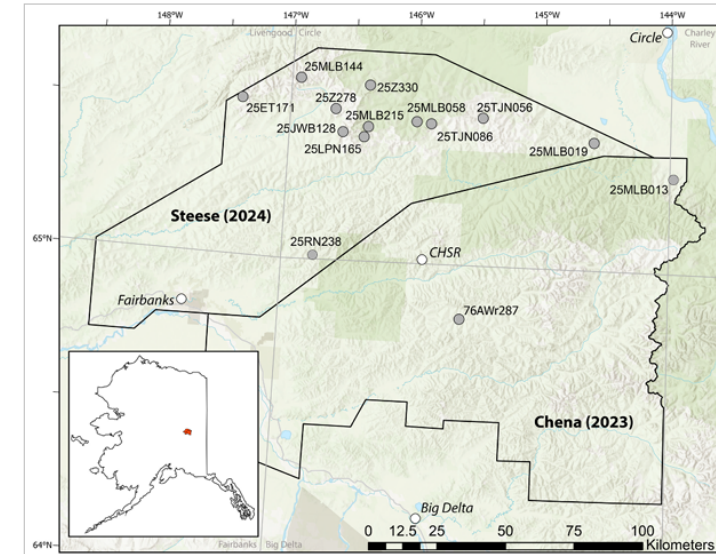
Types of Reports

- Archived Reports
- External Reports
- Internal Reports
 - Raw Data Files
 - Geochronology
 - Regional Interpretation
 - Etc

LA-ICP-MS URANIUM-LEAD ZIRCON DATA FROM IGNEOUS ROCKS COLLECTED DURING THE 2025 FIELD SEASON FROM THE STEESE, WHITE MOUNTAINS, AND CHENA PROJECT AREAS, YUKON-TANANA UPLAND, ALASKA

J. Wesley Buchanan, Michael L. Barrera, and Rainer J. Newberry

Raw Data File 2026-11



Location map of samples selected for uranium-lead geochronologic analysis. The black polygons represent Earth MRI project areas and are labeled with the project name and award year. CHSR is the location of Chena Hot Springs Resort. Light gray lines and text show the 1:250,000 quadrangle boundaries and names.

Publications in the DGGs RDF series provide elevation data, field observations, or analytical results. The data have been reviewed for clarity and consistency but have not undergone technical peer review.

2026
STATE OF ALASKA
DEPARTMENT OF NATURAL RESOURCES
DIVISION OF GEOLOGICAL & GEOPHYSICAL SURVEYS



DGGS Online Tools #5 at 47%


 Department of Natural Resources
GEOLOGICAL & GEOPHYSICAL SURVEYS

[HOME](#) [POPULAR GEOLOGY](#) [MAPS & DATA](#) [PUBLICATIONS](#) [GEOLOGIC MATERIALS CENTER](#) [LINKS](#) [ABOUT US](#)

State of Alaska / Natural Resources / Geological & Geophysical Surveys / Interactive Maps

Interactive Maps and Web Apps



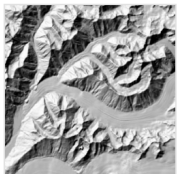
Geologic Materials Center Inventory

This interactive map allows users to view inventory details of the Alaska GMC sample repository. [See citation details.](#)



Geologic Photos of Alaska

This interactive map displays our current (and ever-changing) collection of geologically interesting photos in and around Alaska. [See citation details.](#)



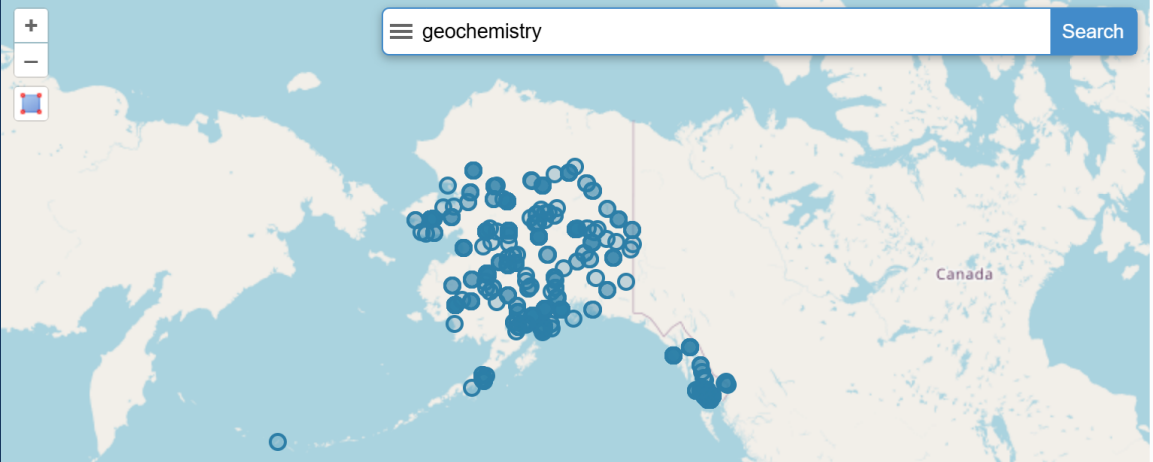
Elevation Portal

This interactive map displays known public-domain elevation datasets in Alaska. [See citation details.](#)

Quick Links

- [Geologic Materials Center Inventory](#)
- [Geologic Photos of Alaska](#)
- [Elevation Portal](#)
- [Alaska Elevation Data Status](#)
- [Geologic Map Index of Alaska](#)
- [Seismic Hazards of Alaska](#)
- [Alaska Landslide Reporter App](#)
- [Alaska Landslide Inventory](#)
- [Alaska Flood Indundation Tool \(AK-FIT\)](#)
- [Alaska DGGS Culvert Inventory](#)
- [CSO Web Map Application](#)
- [Alaska Coastal Profile Tool](#)



State of Alaska | Natural Resources | Geological & Geophysical Surveys | Alaska Geologic Data Index



Showing | Displaying 1 - 1001 of 4079

ID	Title	Catalog Number	Media Types	Data Types	Keywords
25879	Addendum to the Preliminary Report on the Nome Antimony-Gold Claims	Mt. Distin - 1980 - C.C.Hawley	Paper	Administrative	Resources and Industry > 1 Resources and Industry > 1
23321	Exploration and Evaluation of Precious Metal Potential of Bristol Bay Native Corporation Lands, Volume VIII, Plates		Paper	Administrative	Resources and Industry > 1 Resources and Industry > 1

Geochemical Data #6 at 44%

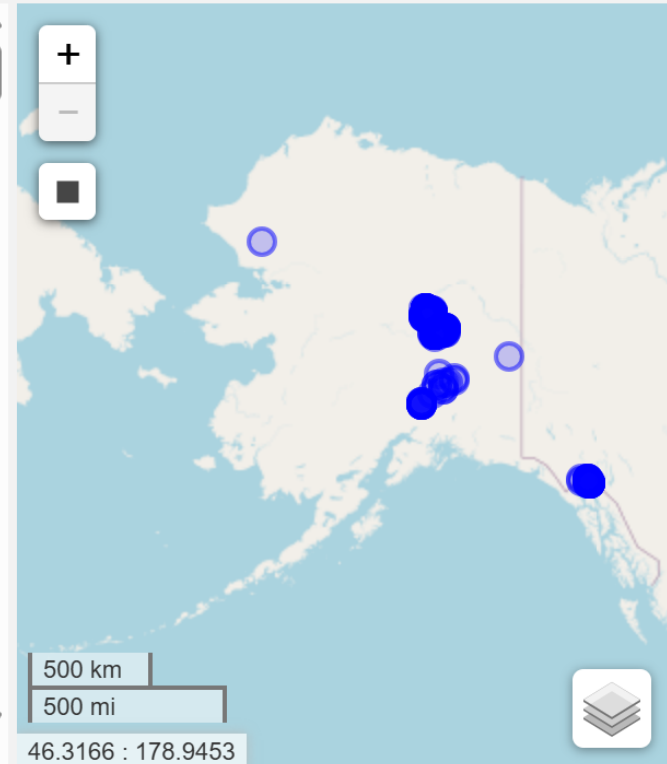


DIVISION OF GEOLOGICAL & GEOPHYSICAL SURVEYS
Help

State of Alaska | Natural Resources | Geological & Geophysical Surveys | Geochemistry

Copper
Previous
Displaying 1 - 250 of 64032

Showing Sort by

Sample No	Sample Type	Citation	Ag ppm AAS	Ag ppm FA-AFS	Ag ppm FA-C
99Pe010A	rock	RDF 2000-2			
99BAF001	rock	RDF 2000-1 v. 1.0.1			
99Pe011B	rock	RDF 2000-2			
99JS046A	rock	RDF 2000-2			
99JS046C	rock	RDF 2000-2			
99JS046D	rock	RDF 2000-2			
99Pe053	rock	RDF 2000-2			
FBX82-D1_430	rock	AOF 164			
FBX82-A2_256	rock	AOF 165	-1		
FBX82-D1_429	rock	AOF 164	0.3		
FBX82-A2_259	rock	AOF 165	0.5		
FBX82-A2_3683	rock	AOF 165	5.1		
FBX82-D1_426	rock	AOF 164	0.3		
FBX82-A2_257	rock	AOF 165	0.1		
FBX82-A2_258	rock	AOF 165	0.2		
FBX82-A1_1755	rock	AOF 164	1.1		
FBX82-A1_1756	rock	AOF 164	1.5		
FBX82-A2_347	rock	AOF 165	-1		
FBX82-A1_437	rock	AOF 164	-1		
FBX82-D3_425	rock	AOF 166	-1		



500 km
500 mi

46.3166 : 178.9453

Geologic Materials Center #7 at 35%



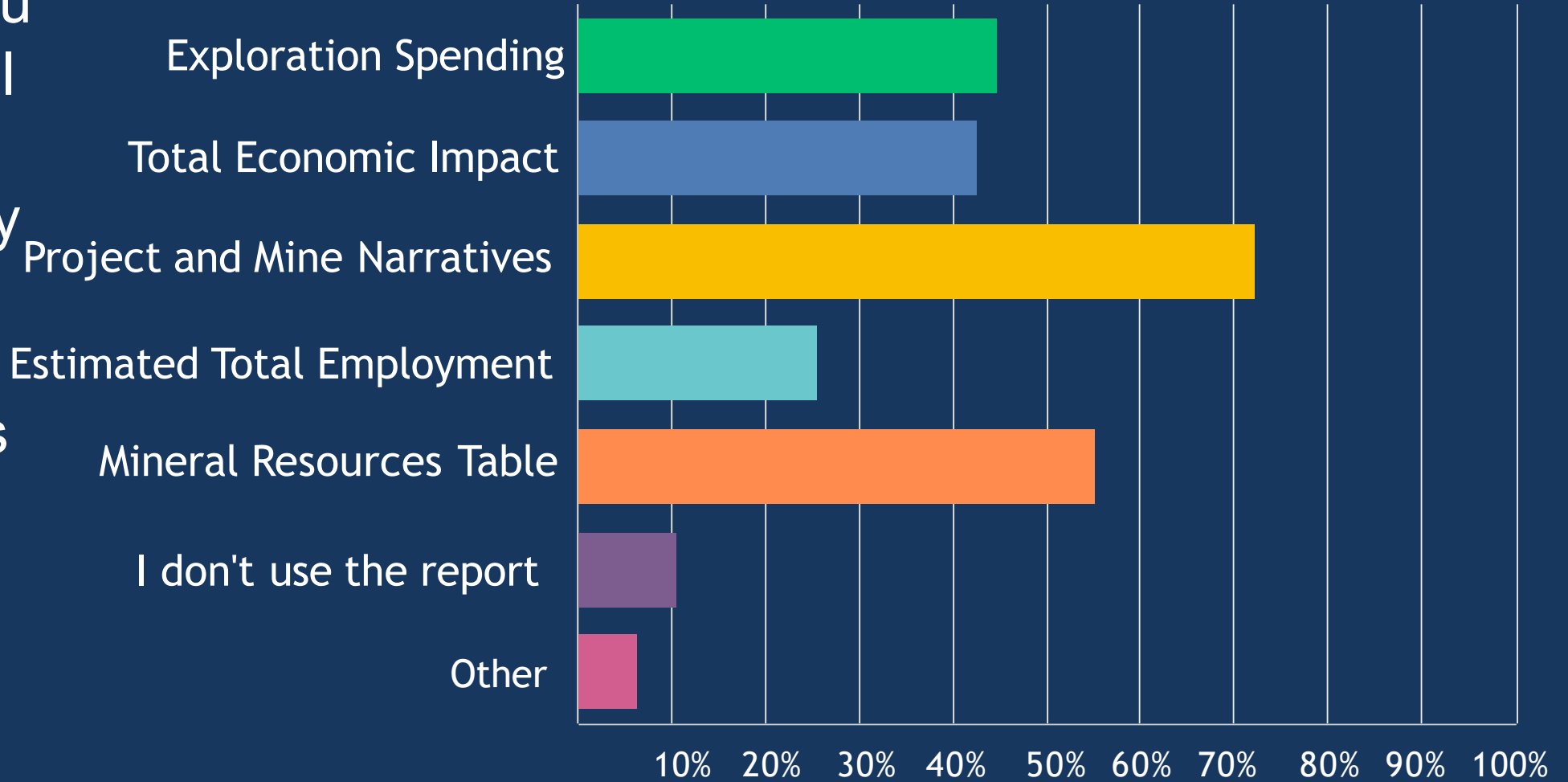
New hyperspectral scanner coming online in 2026

- “Other” #8 at 6%
Strong benefit of working with DGGS staff directly
- Don’t use DGGS data #9 at 2%



Online Survey—Mineral Industry Report

Q3-What do you find most useful about the Mineral Industry Report?(You may select multiple options)



Online Survey—Mineral Industry Report

Q4-Assess your awareness of and ability to access DGGS data products.

Q5-What types of geologic data would you like to see from DGGS in the future?

Q6-What types of geophysical data would you like to see from DGGS in the future?

Q8-What level of interpretation do you value in DGGS publications?

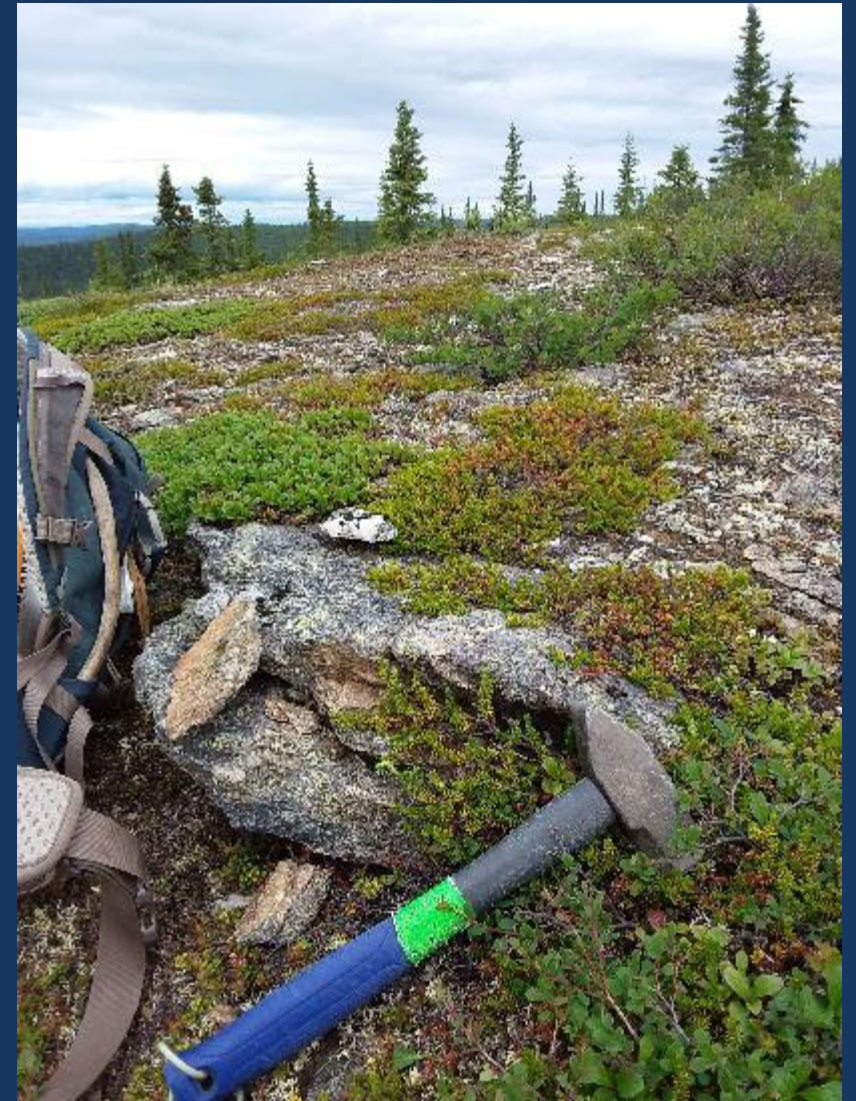
Q9-Please select 3 regions that DGGS should prioritize for geologic mapping and geophysical surveys.



Online Survey—Mineral Industry Report

Q11-What best describes your organization?

- Exploration Greenfields 20%
- Consultant 20%
- Retired 13%
- Advanced Exploration 11%
- Government 11%
- Mine Operator 9%
- ANCSA Corporation 7%
- Other 4%
- Exploration Mine Site 2%
- Academic Institution 2%
- Media 0%



Online Survey—Mineral Industry Report

Q12-How would you describe your role?

- Geologist 49%
- Management 16%
- Engineer 11%
- Business/Finance 9%
- Prospector 7%
- Geophysicist 4%
- Other 4%



AK DGGS Mineral Research Survey

