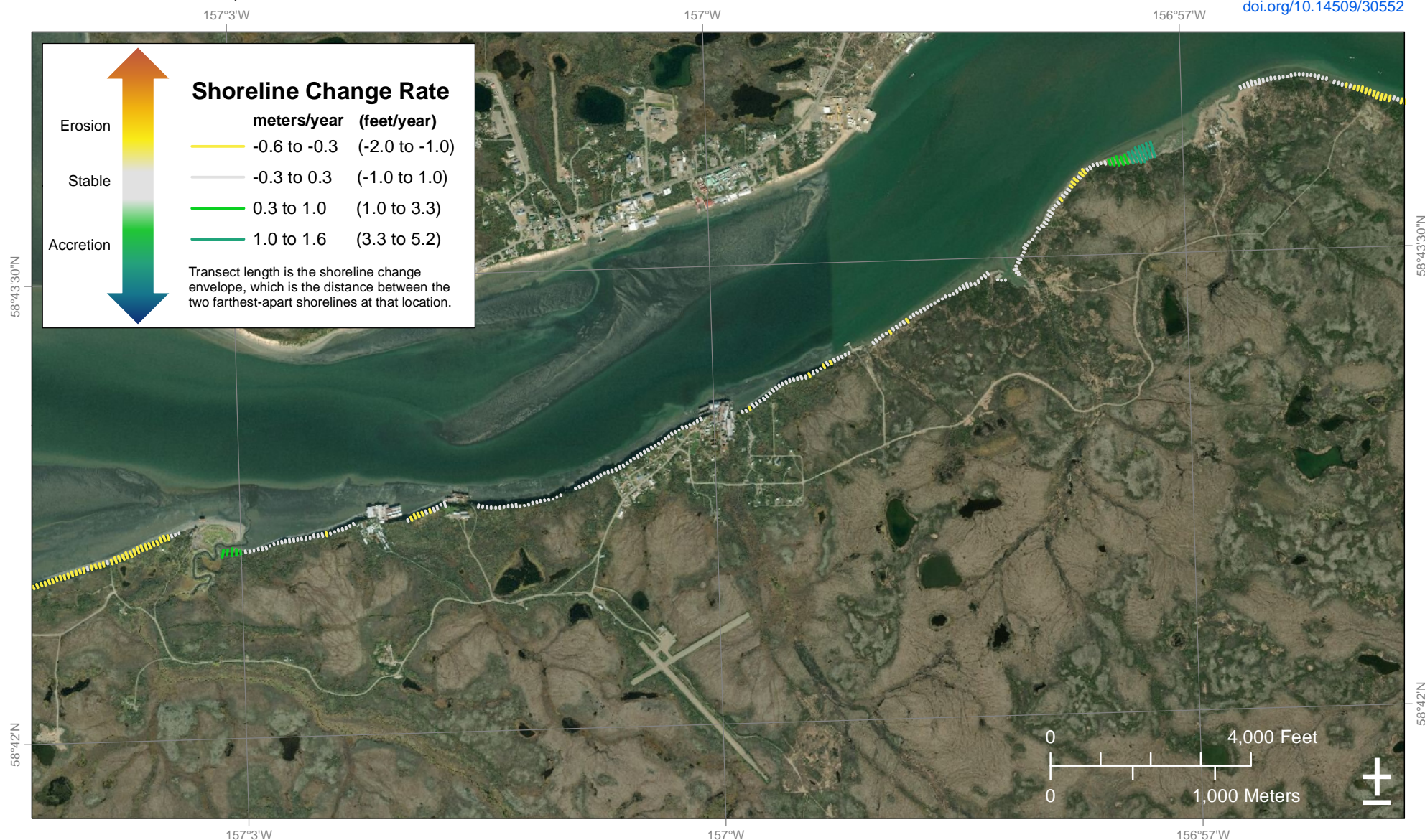


Shoreline Change (1951–2018)

South Naknek, Alaska

REPORT OF INVESTIGATIONS 2020-10
Overbeck and others, 2020
SOUTH NAKNEK
doi.org/10.14509/30552



STATE OF ALASKA DEPARTMENT OF NATURAL RESOURCES DIVISION OF GEOLOGICAL & GEOPHYSICAL SURVEYS

The State of Alaska makes no expressed or implied warranties (including warranties for merchantability and fitness) with respect to the character, functions, or capabilities of the electronic data or products or their appropriateness for any user's purposes. In no event will the State of Alaska be liable for any incidental, indirect, special, consequential, or other damages suffered by the user or any other person or entity whether from the use of the electronic services or products or any failure thereof or otherwise. In no event will the State of Alaska's liability to the Requestor or anyone else exceed the fee paid for the electronic service or product. website: dggs.alaska.gov

Shorelines represent the land-water interface. Shorelines were delineated from historical photographs collected between 1951 and 2018. Using the Digital Shoreline Analysis System (DSAS) developed by the U.S. Geological Survey, the measured distance between shorelines through time determines the linear rate of shoreline change at shore-perpendicular transects. The length of shoreline change envelope at each transect location indicates the distance between the nearest and farthest shorelines between 1951 and 2018. The shoreline change envelope is colored by the shoreline change rate (meters/year and feet/year), with hot colors representing erosion and cool colors representing accretion. Linear rates of shoreline change are simplified and do not accurately reflect shoreline erosion and accretion at all locations.

This work is part of the Coastal Infrastructure Erosion Vulnerability Assessment project funded by the Denali Commission Environmentally Threatened Communities Grant Program. Data used to conduct the analysis were paid for by the State of Alaska and the Federal Emergency Management Agency in the 2018 update to the Alaska State Hazard Mitigation Plan.