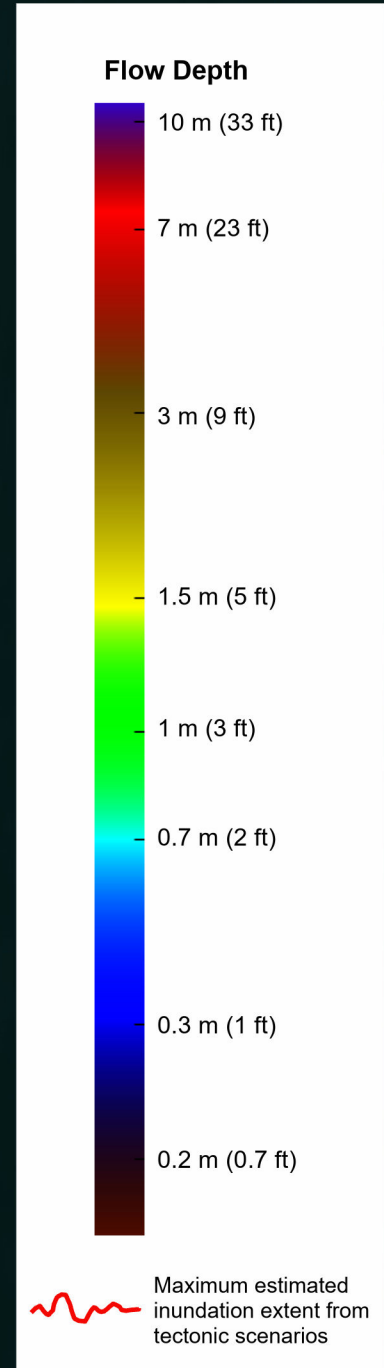
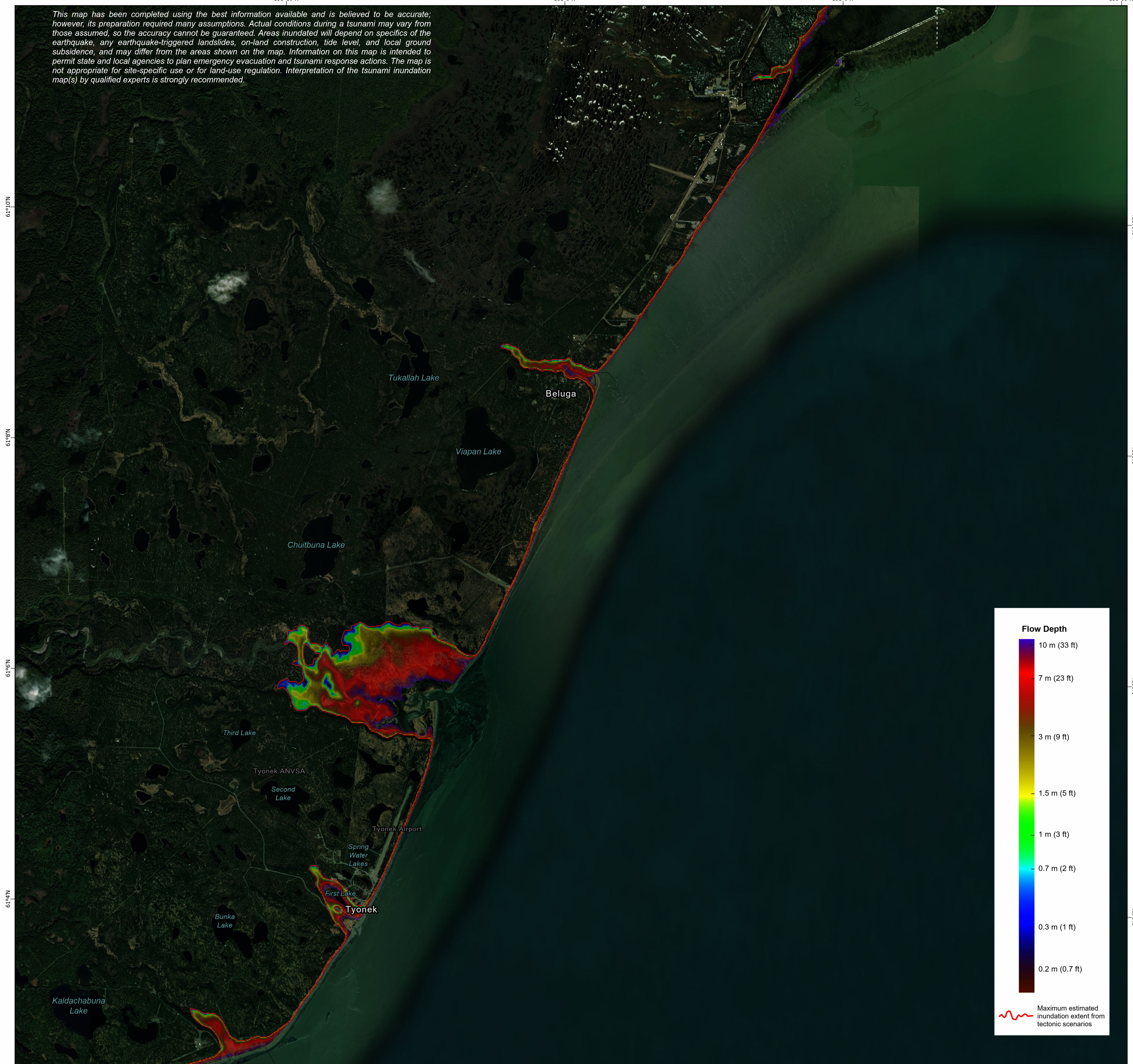




151°10'W 151°5'W 151°0'W 150°55'W

This map has been completed using the best information available and is believed to be accurate; however, its preparation required many assumptions. Actual conditions during a tsunami may vary from those assumed, so the accuracy cannot be guaranteed. Areas inundated will depend on specifics of the earthquake, any earthquake-triggered landslides, on-land construction, tide level, and local ground subsidence, and may differ from the areas shown on the map. Information on this map is intended to permit state and local agencies to plan emergency evacuation and tsunami response actions. The map is not appropriate for site-specific use or for land-use regulation. Interpretation of the tsunami inundation map(s) by qualified experts is strongly recommended.



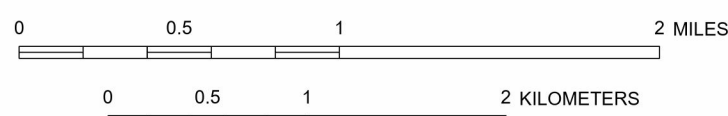
MAXIMUM ESTIMATED TSUNAMI INUNDATION FOR BELUGA AND TYONEK, ALASKA

By

E.N. Suleimani¹, J.B. Salisbury², D.J. Nicolsky¹

2024

SCALE 1:38000



Base map from:
 ESRI World Imagery (accessed February 2024)
Projection:
 Alaska State Plane Zone 4 (Feet)
Datum:
 North American Datum of 1983

Cartography by:
 A.E. Macpherson² (2023)
Cartographic review by:
 M. D. Hendricks² (2024)
Review by:
 J. E. Athey² (2024)

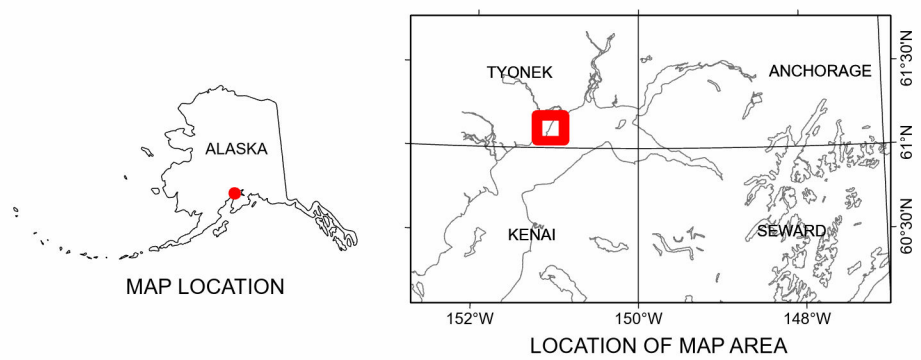
The State of Alaska makes no expressed or implied warranties (including warranties for merchantability and fitness) with respect to the character, functions, or capabilities of the electronic data or products or their appropriateness for any user's purposes. In no event will the State of Alaska be liable for any incidental, indirect, special, consequential, or other damages suffered by the user or any other person or entity whether from the use of the electronic services or products or any failure thereof or otherwise. In no event will the State of Alaska's liability to the Requestor or anyone else exceed the fee paid for the electronic service or product.

Publications produced by the Division of Geological & Geophysical Surveys (DGGs) are available for download from the DGGs website (dgg.alaska.gov). Publications on paper or digital media can be examined or purchased in the Fairbanks office:

STATE OF ALASKA
 DEPARTMENT OF NATURAL RESOURCES
 DIVISION OF GEOLOGICAL & GEOPHYSICAL SURVEYS
 3354 College Road ♦ Fairbanks, Alaska 99709-3707
 Phone 907-451-5010 ♦ Fax 907-451-5050
 email: dggspubs@alaska.gov ♦ website: dgg.alaska.gov



Alaska Earthquake Center
 Geophysical Institute
 University of Alaska Fairbanks
 PO Box 757320, Fairbanks, Alaska 99775-7320
 email: uaf-aec@alaska.edu
 website: tsunami.alaska.edu



Affiliations:

- ¹ Alaska Earthquake Center, Geophysical Institute, University of Alaska Fairbanks, PO Box 757320, Fairbanks, AK 99775-7320
- ² Alaska Division of Geological & Geophysical Surveys, 3354 College Rd, Fairbanks, Alaska 99709-3707

This report was funded by the U.S. Department of Commerce/National Oceanic and Atmospheric Administration (NOAA) through National Tsunami Hazard Mitigation Program Awards NA21NWS4670003 and NA22NWS4670012 to the Alaska Division of Homeland Security and Emergency Management in partnership with the Alaska Earthquake Center and the Alaska Division of Geological & Geophysical Surveys. This does not constitute an endorsement by NOAA.