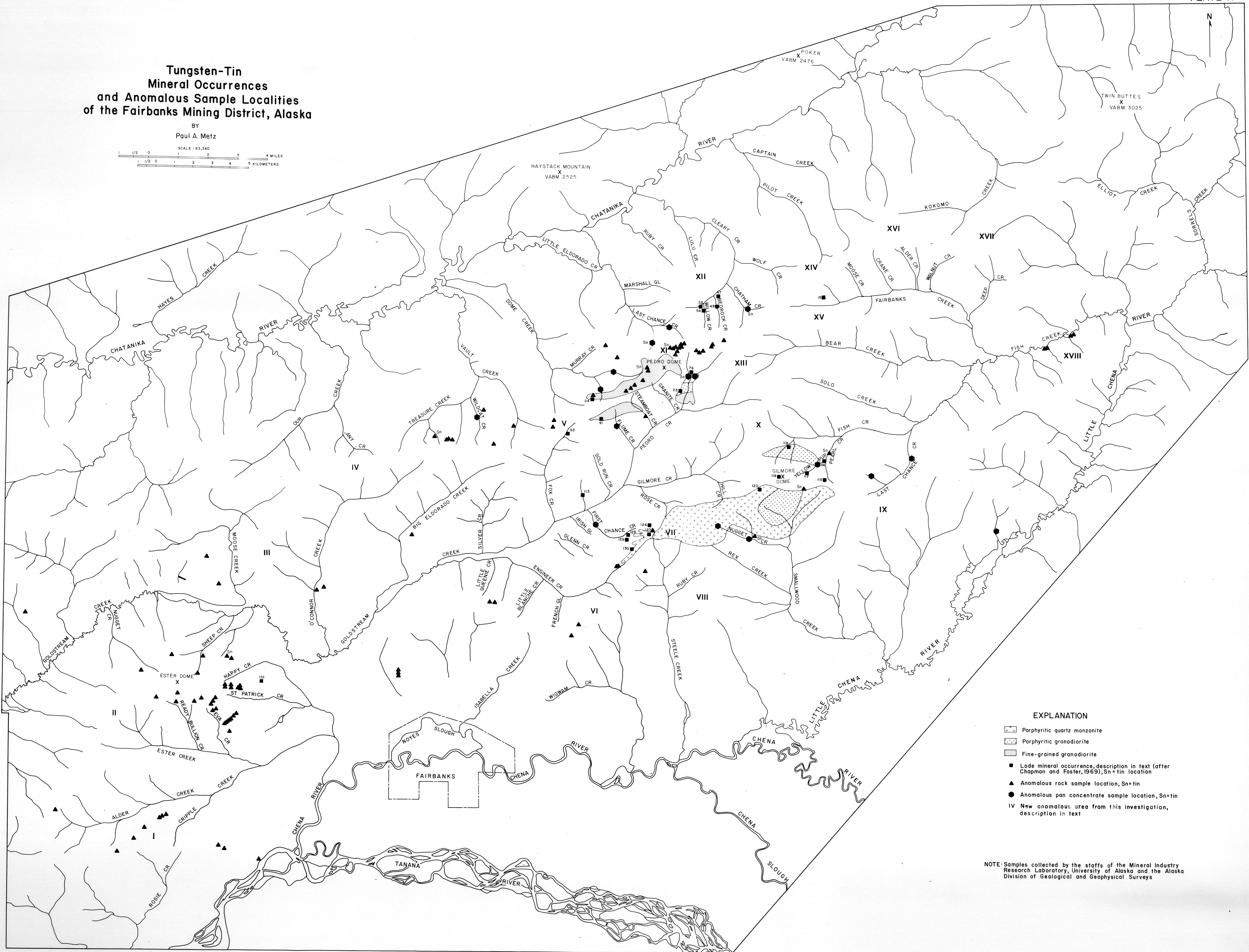
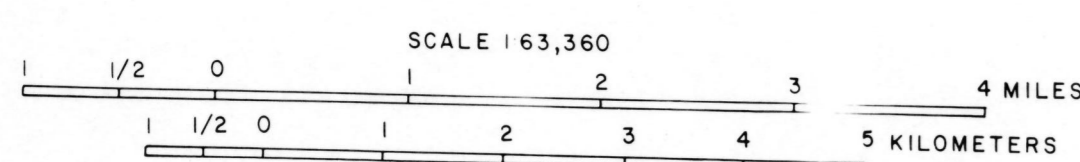


Tungsten-Tin Mineral Occurrences and Anomalous Sample Localities of the Fairbanks Mining District, Alaska

BY Paul A. Metz



- EXPLANATION**
- Porphyritic quartz monzonite
 - ▨ Porphyritic granodiorite
 - ▩ Fine-grained granodiorite
 - Lode mineral occurrence, description in text (after Chapman and Foster, 1969), Sn = tin location
 - ▲ Anomalous rock sample location, Sn = tin
 - Anomalous pan concentrate sample location, Sn = tin
 - IV New anomalous area from this investigation, description in text

NOTE: Samples collected by the staffs of the Mineral Industry Research Laboratory, University of Alaska and the Alaska Division of Geological and Geophysical Surveys