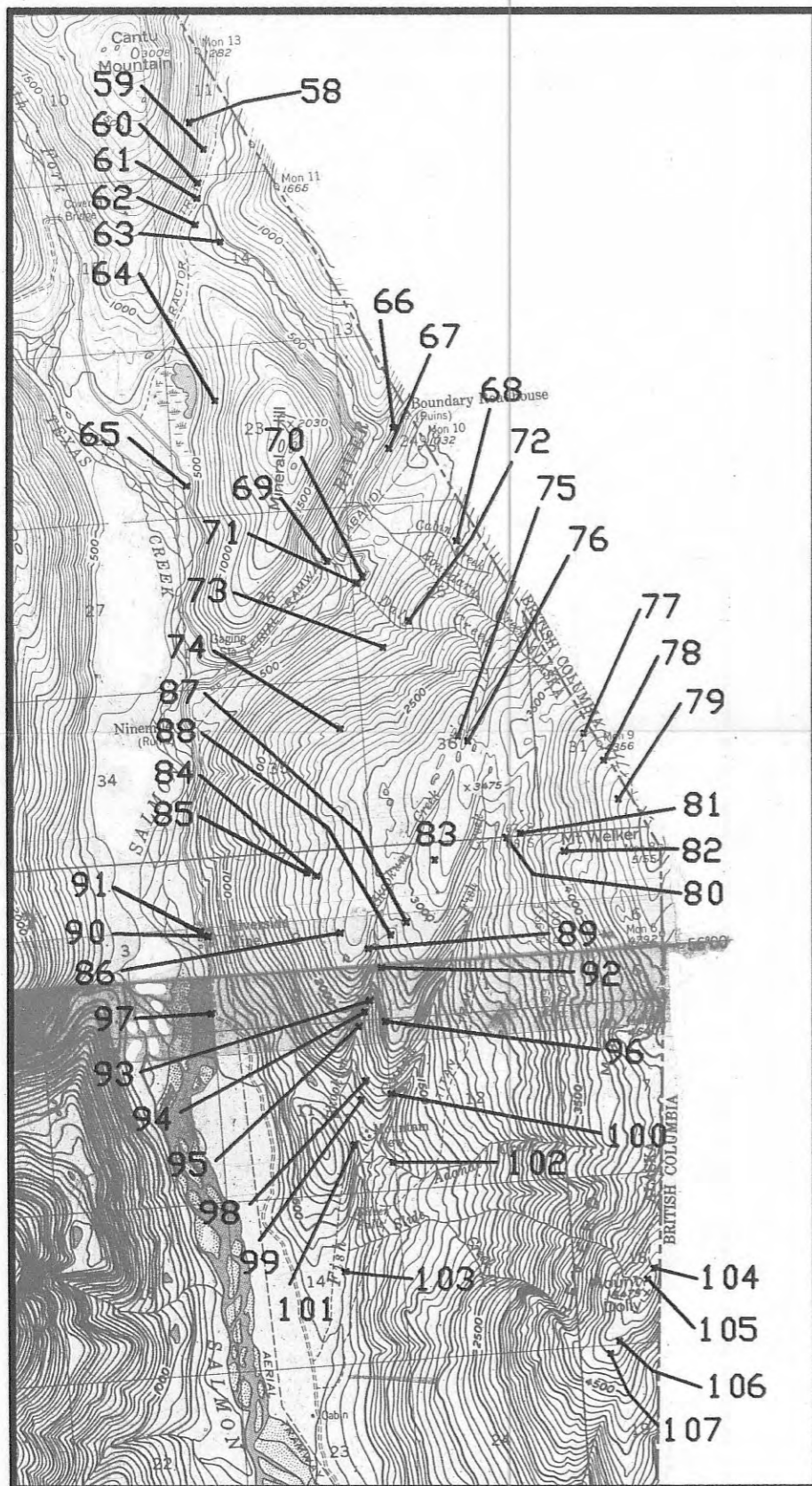


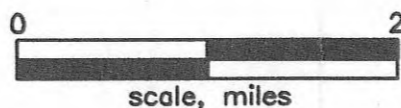
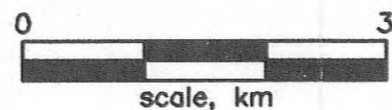
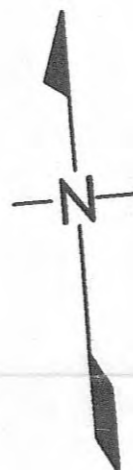
# INSET 5B: East Hyder area



85 ———→ Map number

## MINERAL LOCALITIES SAMPLED

Mineral localities	Map No.	Commodity
Cantu	58-59	Au, Ag, Pb, Zn, Cu
Frances	60-61	Au, Cu, Zn
Velikanje placer	62-63	Au
West Baseline	64	Cu
Ninety-six area	65	
Border	66-67	Zn
Stoner	68	Au, Ag, Pb, Zn, Cu
Iron Ridge	69	Cu
Daly Alaska, Lower	70-71	Au, Ag, Zn, Pb
Daly-Alaska, Upper	72	Au, Ag, Zn, Pb, Cu
Alaska Premier	73	Zn
Eureka	74	Au, Ag, Zn, Pb
Blacksmith	75	
Hyder Skookum	76	
Carto	77-79	
Titan	80-82	Au, Ag, Zn, Pb
Upper Iron	83	Au, Ag, Cu
Monarch	84-85	Au, Ag, W
Ronan Mine	86	Au, Ag, Cu, Pb, Zn
Shaft Creek Copper	87	Au, Ag, Cu, Zn
Iron	88	Au, Ag, Cu
Olympia No. 8 and No. 9	89	Zn
Riverside Mine	90	Au, Ag, Pb, Cu, Zn, W, REE
Riverside placer	91	Au
Judy-Ronnie	92	Pb, Cu, Ag
Olympia No. 5 and No. 6	93	Au, Ag, Cu, Zn
Starboard	94-95	Au, Ag, Pb, Zn
Silver Point	96	Au, Ag, Pb, Zn, Cu
Six Mile	97	Au, Ag, Pb, Zn, Cu
Onlione	98	Au, Ag, Pb, Zn
Grey Copper	99	Au, Ag, Pb, Cu, W
Ruby Silver	100	Au, Ag, Pb, Zn, REE
Mountain View	101	Au, Ag
Mountain View, Grey Copper	101	Au, Ag, Pb, Cu, W
Mountain View, Ruby Silver	101	Pb, REE
Adanac	102	Au, Ag, Zn, Pb, Cu
Silver Falls	103	Au, Ag, Zn, Pb
Mt. Dolly, Dupree Quartz	104	Zn
Mt. Dolly, Summit	105	Au, Ag, Pb, Zn
Mt. Dolly	106-107	Zn, Cu



Base map adapted from USGS 1:63,360 Ketchikan D-1 and Bradfield Canal A-1