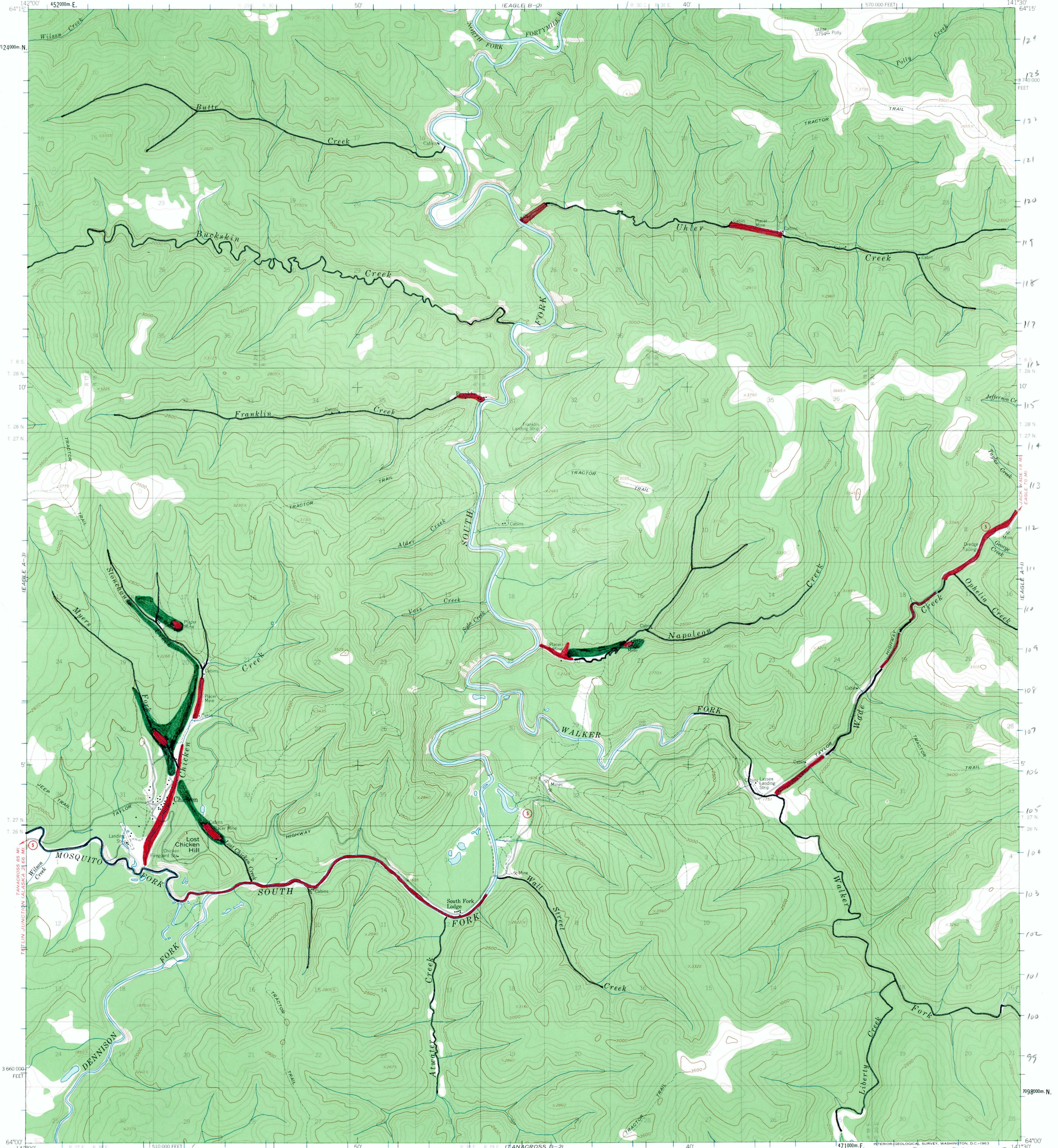


UNITED STATES
DEPARTMENT OF THE INTERIOR
GEOLOGICAL SURVEY

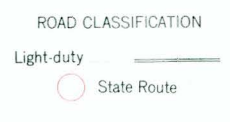
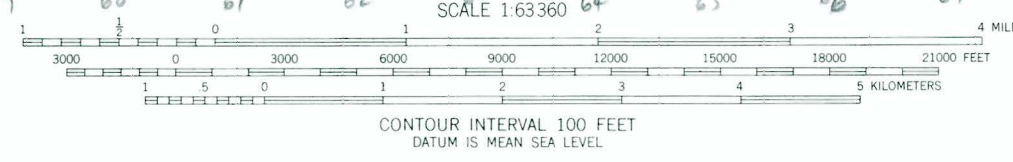
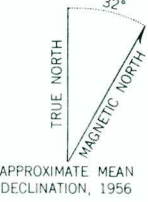
EAGLE (A-2) QUADRANGLE
ALASKA
1:63,360 SERIES (TOPOGRAPHIC)

usbm ofr 43-80



Mapped, edited, and published by the Geological Survey
Control by USGS and USC&GS

Topography by photogrammetric methods from aerial photographs
taken 1954, field annotated 1956. Map not field checked
Universal Transverse Mercator projection, 1927 North American Datum
10,000-foot grid based on Alaska coordinate system, zone 2
1000-meter Universal Transverse Mercator grid ticks,
zone 7, shown in blue
Land lines represent unsurveyed and unmarked locations
predetermined by the Bureau of Land Management
Folios CR 1, Copper River Meridian and F-8, Fairbanks Meridian



FOR SALE BY U. S. GEOLOGICAL SURVEY
FAIRBANKS, ALASKA DENVER 25, COLORADO WASHINGTON 25, D. C.
A FOLDER DESCRIBING TOPOGRAPHIC MAPS AND SYMBOLS IS AVAILABLE ON REQUEST

EAGLE (A-2), ALASKA
N6400-W14130/15X30
1956