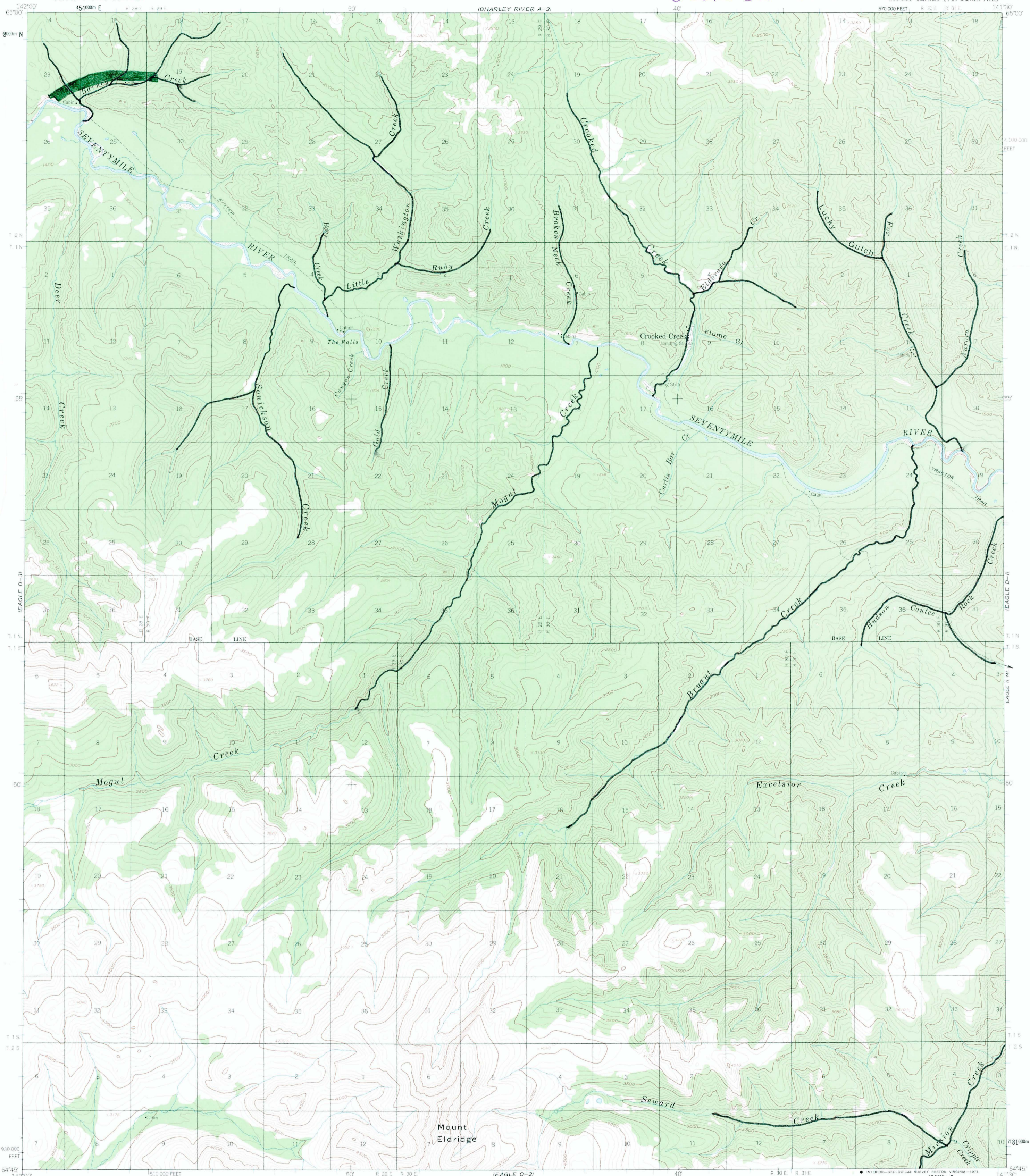


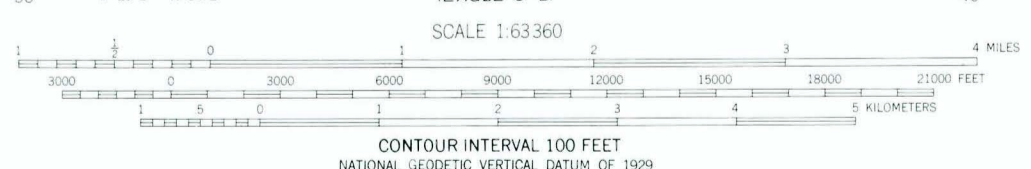
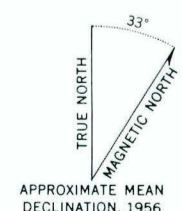
UNITED STATES
DEPARTMENT OF THE INTERIOR
GEOLOGICAL SURVEY

EAGLE (D-2) QUADRANGLE
ALASKA
1:63360 SERIES (TOPOGRAPHIC)

usbm ofr 43-80



Mapped, edited, and published by the Geological Survey
 Control by USGS, USC&GS, and International Boundary Commission
 Topography by photogrammetric methods from aerial photographs
 taken 1954 - 1955; field annotated 1956. Map not field checked
 Universal Transverse Mercator projection, 1927 North American datum
 10,000-foot grid based on Alaska coordinate system, zone 2
 1000-meter Universal Transverse Mercator grid ticks,
 zone 7, shown in blue
 Land lines represent unsurveyed and unmarked locations
 predetermined by the Bureau of Land Management
 Folio F-8, Fairbanks Meridian



ROAD CLASSIFICATION
 Trails

FOR SALE BY U. S. GEOLOGICAL SURVEY
 FAIRBANKS, ALASKA 99701, DENVER, COLORADO 80225, OR RESTON, VIRGINIA 22092
 A FOLDER DESCRIBING TOPOGRAPHIC MAPS AND SYMBOLS IS AVAILABLE ON REQUEST

EAGLE (D-2), ALASKA
 N6445-W14130/15X30