



EXPLANATION
SEDIMENTARY AND
METASEDIMENTARY ROCKS

- Qds
- Qal
- Qtg
- Qmy
- Qmo

SOUTHERN PART OF JARVIS
CREEK COAL FIELD

- Tcs
- Tcm
- Tcl

NORTHERN PART OF JARVIS
CREEK COAL FIELD

- Tcu

UNCONFORMITY

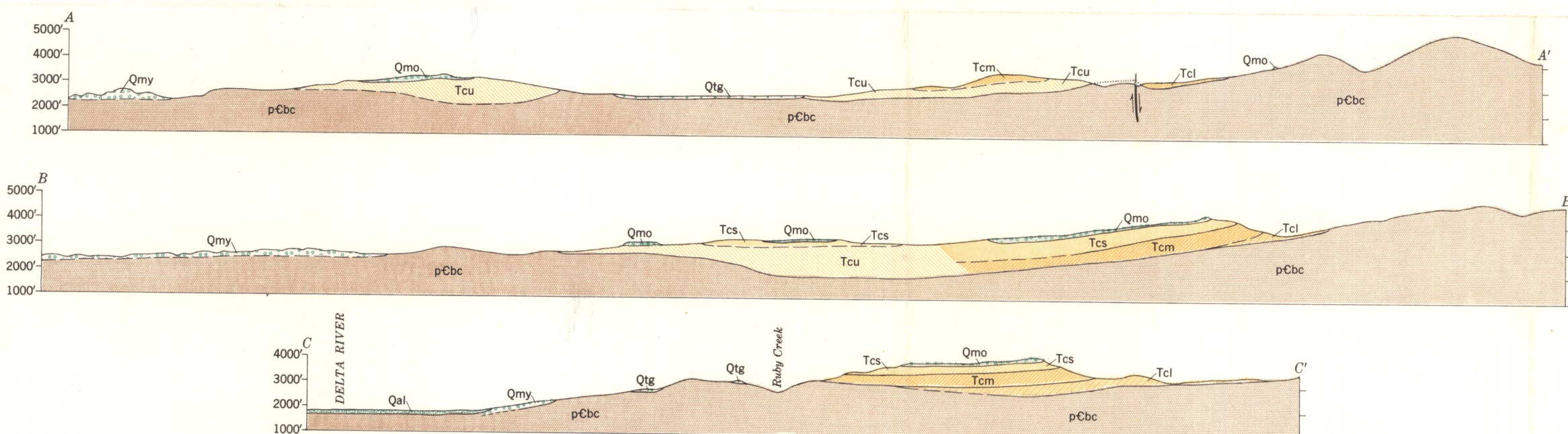
- pCbc

IGNEOUS ROCK

- ri

- Exposure of coal bed
- Coal blossom
- Clinker from burned coal bed
- Area underlain by coal-bearing formation
- Limit of area underlain by coal-bearing formation
Dashed where concealed beneath younger deposits
- Structure contours on base of coal-bearing formation
Dashed where position is uncertain
- Inferred structure contours on former position of base of coal-bearing formation, now removed by erosion

- Contact
Dashed where approximately located
- Inferred contact
- Fault
U, upthrown side; D, downthrown side
- Strike and dip of beds
- Strike and dip of foliation
- Location of measured section
Figure designations refer to sections on plate II



GEOLOGIC MAP AND STRUCTURE SECTIONS OF THE JARVIS CREEK COAL FIELD, ALASKA

1 0 3 Miles
Contour interval 50 feet
Datum is mean sea level