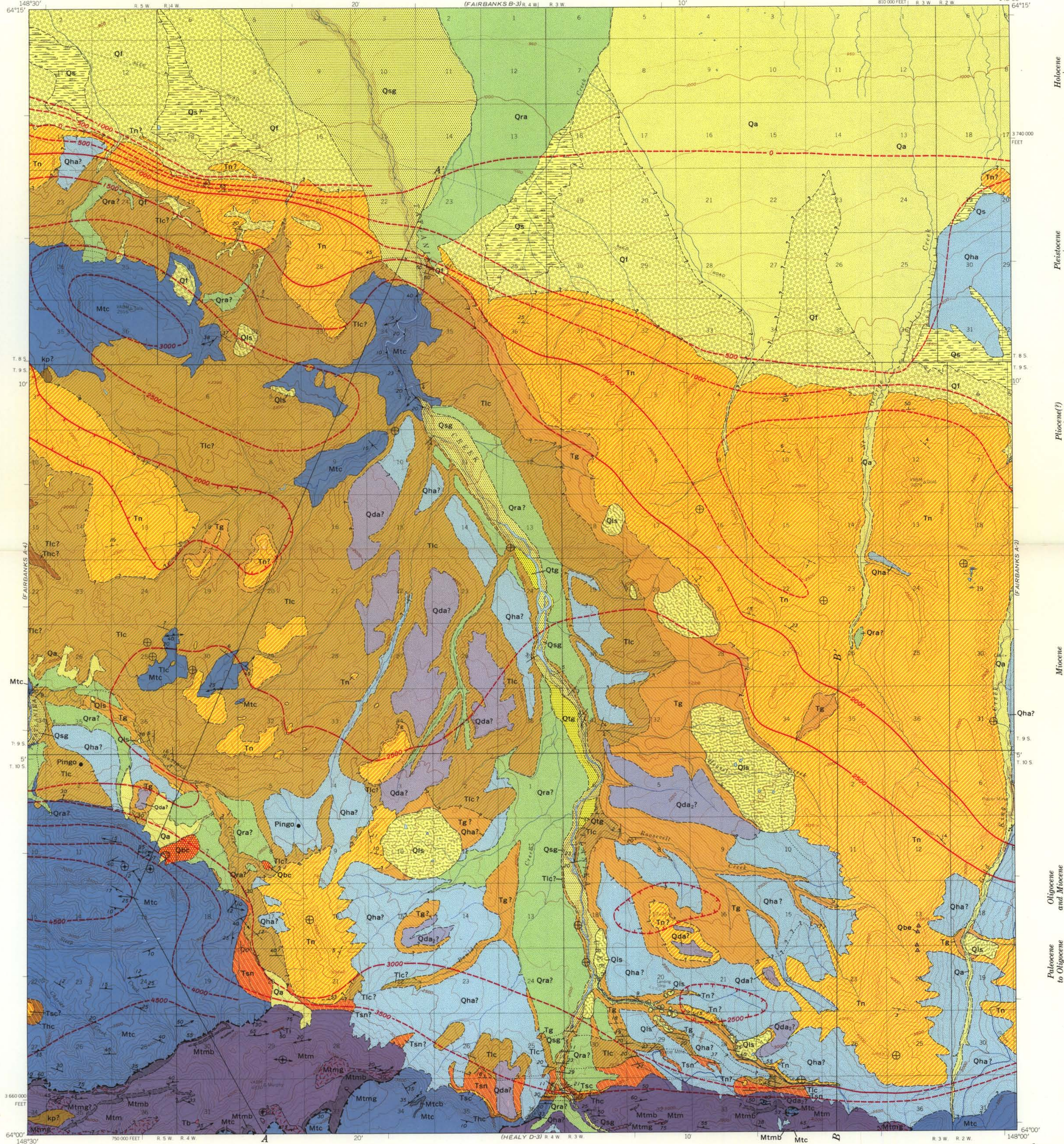
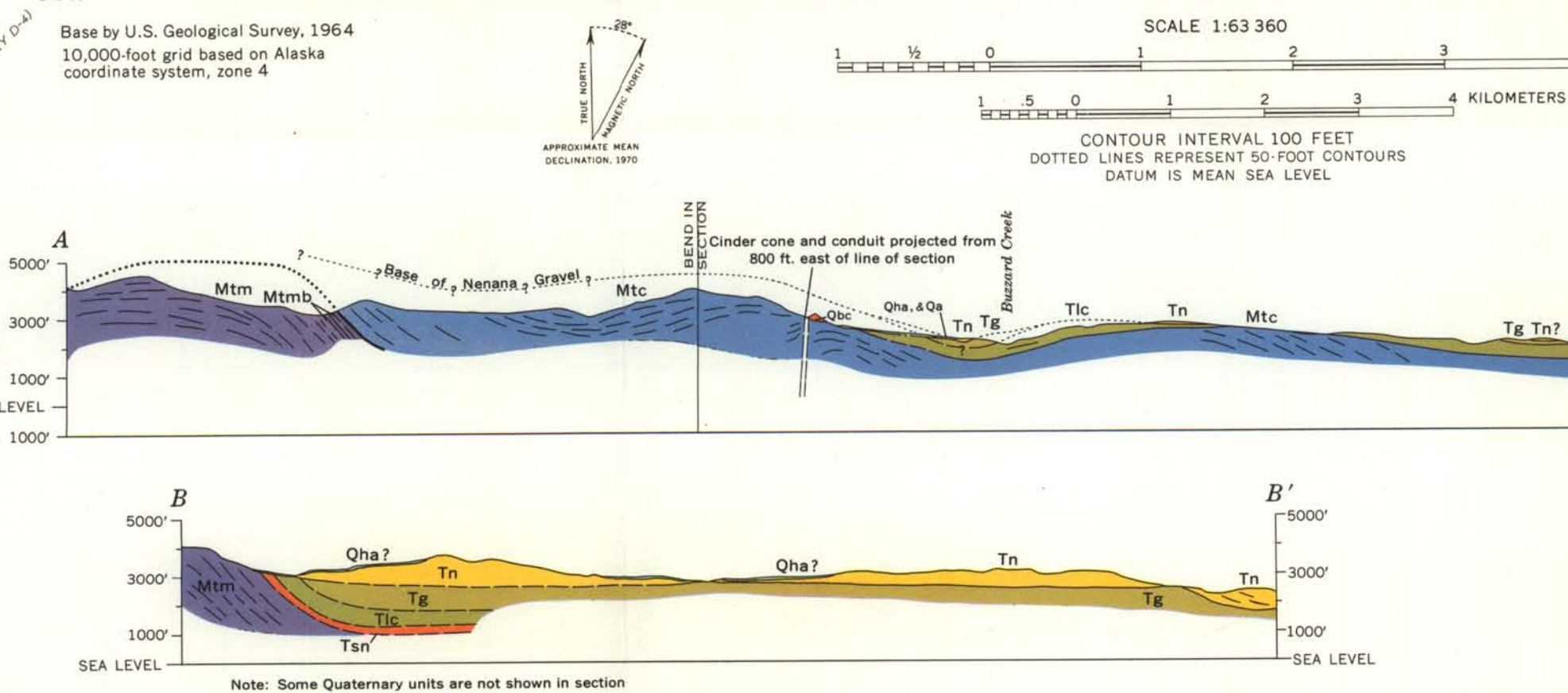
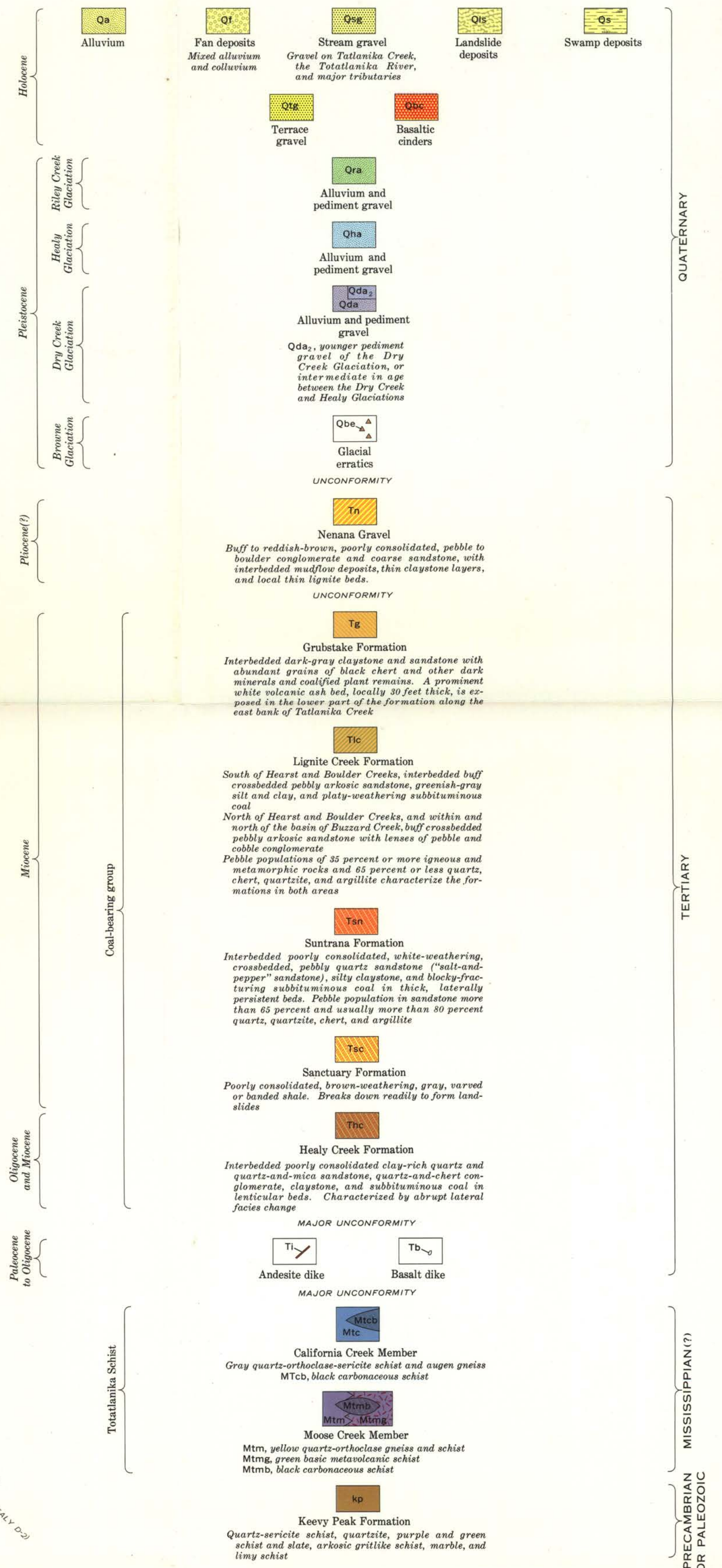


DEPARTMENT OF THE INTERIOR
UNITED STATES GEOLOGICAL SURVEY

GEOLOGIC QUADRANGLE MAP
FAIRBANKS A-3 QUADRANGLE, ALASKA
QQ-809



EXPLANATION



Base by U.S. Geological Survey, 1964
10,000-foot grid based on Alaska
coordinate system, zone 4

SCALE 1:63 360
1 0 1 2 3 4 MILES
1 0 1 2 3 4 KILOMETERS
CONTOUR INTERVAL 100 FEET
DOTTED LINES REPRESENT 50-FOOT CONTOURS
DATUM IS MEAN SEA LEVEL

Geology by Clyde Wahrhaftig, 1949, 1950, 1957, 1958,
and 1963, and R. A. Eckhart, 1950, assisted by
J. R. Johnson and Kirk Bryan, Jr., 1949; Winton Bakke,
Kirk Bryan, Jr., and Allan Cox, 1950; R. E. Zartman,
1957, and Henry Bender, 1958

QUADRANGLE LOCATION

INTERIOR—GEOLOGICAL SURVEY, WASHINGTON, D.C.—1970—G68405

SELECTED BIBLIOGRAPHY
Péwé, Troy L., Wahrhaftig, Clyde, and Weber, Florence, 1966, Geologic map of the Fairbanks
quadrangle, Alaska: U.S. Geol. Survey Misc. Geol. Inv. Map I-455, scale 1:250,000
Wahrhaftig, Clyde, 1958, Quaternary geology of the Nenana River valley and adjacent parts
of the Alaska Range: U.S. Geol. Survey Prof. Paper 293-A, p. 1-68
Wahrhaftig, Clyde, 1968, Schists of the central Alaska Range: U.S. Geol. Survey Bull. 1254-E,
p. E1-E22
Wahrhaftig, Clyde, Wolfe, Jack A., Leopold, Estella B., and Lanphere, Marvin A., 1969, The
coal-bearing group in the Nenana coal field, Alaska: U.S. Geol. Survey Bull. 1274-D, p. D1-
D30.

GEOLOGIC MAP OF THE FAIRBANKS A-3 QUADRANGLE, ALASKA

By
Clyde Wahrhaftig
1970