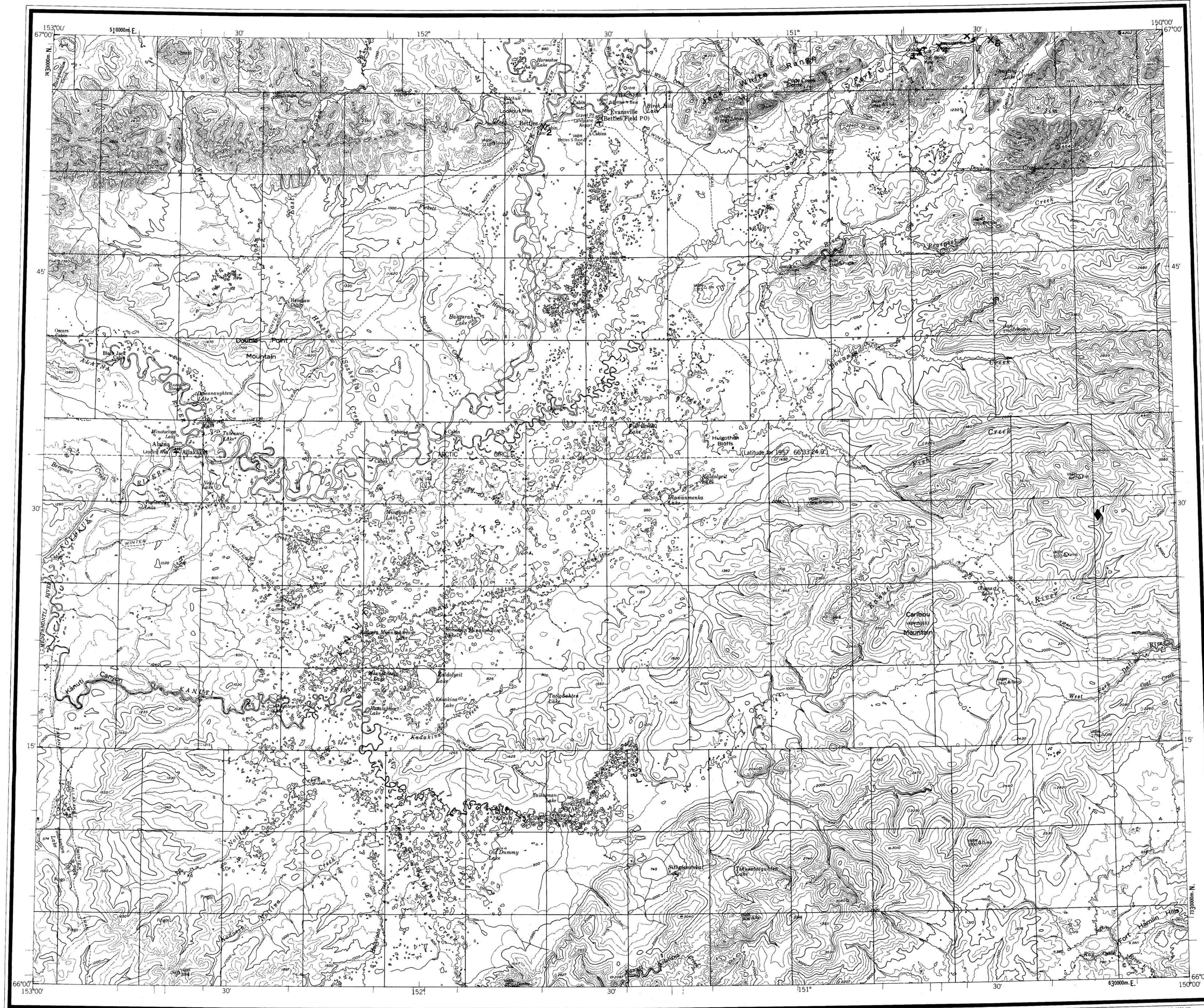


Please return to
MINERALS LIBRARY
A.D.G.G.S.



EXPLANATION

◆ LODE DEPOSIT
X₂ PLACER DEPOSIT } NUMBERS REFER TO LIST BELOW

LODE DEPOSIT

Number	Name and principal reference	Commodity ^{1/}
1	Kanuti River; Patton and Miller, 1970, p. J8-J9	Pb, Ag, Zn

PLACER DEPOSITS

Number	Name and principal reference(s)	Commodity ^{1/} , ^{2/}
2	Bettles Bars; Reed, 1938, p. 163-164	Au
3	Gold Bench; Maddren, 1913, p. 105-107; Reed, 1938, p. 153-154; White, 1952, p. 11; Wedow and others, 1953, p. 3; Nelson, West, and Matzko, 1954, p. 18-19	Bi, Cu, Fm, Au, Pb, Hg, Mz, Sn, W
4	Ironside Bench (Bar); Maddren, 1913, p. 107; Reed, 1938, p. 154-155	Au
5	Rock Creek; Reed, 1938, p. 160-161	Au
6	Davis Creek; Maddren, 1913, p. 70, 107	Au

Placer deposit not shown on map because occurrence could not be located closely enough to plot:

Prospect Creek; Maddren, 1913, p. 105-106	Au
---	----

REFERENCES

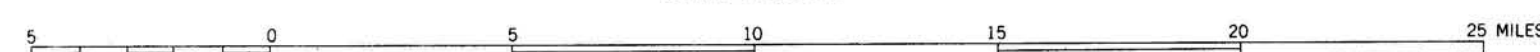
Maddren, A. G., 1913, The Koyukuk-Chandalar region, Alaska: U.S. Geol. Survey Bull. 532, 119 p.
 Nelson, A. E., West, W. S., and Matzko, J. J., 1954, Reconnaissance for radioactive deposits in eastern Alaska, 1952: U.S. Geol. Survey Circ. 348, 21 p.
 Patton, W. W., Jr., and Miller, T. P., 1970, Preliminary geologic investigations in the Kanuti River region, Alaska: U.S. Geol. Survey Bull. 1312-J, p. J1-J10.
 Reed, I. McK., 1938, Upper Koyukuk region, Alaska: Alaska Dept. Mines unpublished rept., 169 p.
 Wedow, Helmut, Jr., and others, 1953, Preliminary summary of reconnaissance for uranium and thorium in Alaska, 1952: U.S. Geol. Survey Circ. 248, 15 p.
 White, M. G., 1952, Radioactivity of selected rocks and placer concentrates from northeastern Alaska: U.S. Geol. Survey Circ. 195, 12 p.

^{1/} Symbols - Bi, bismuth; Cu, copper; Fm, fissionable material (other than monazite); Au, gold; Pb, lead; Hg, mercury; Mz, monazite; Ag, silver; Sn, tin; W, tungsten.

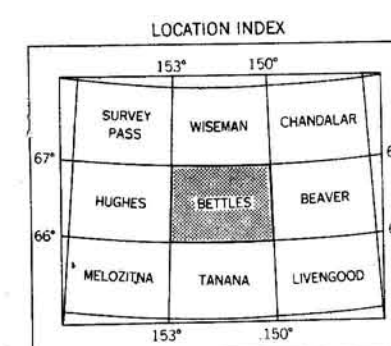
^{2/} Gold has probably been produced from the listed placers.

MAPPED, EDITED, AND PUBLISHED BY THE GEOLOGICAL SURVEY, 1956

SCALE 1:250 000



CONTOUR INTERVAL 200 FEET
DATUM IS MEAN SEA LEVEL



METALLIC MINERAL RESOURCES MAP OF THE BETTLES QUADRANGLE, ALASKA

Compiled by Edward H. Cobb, 1972