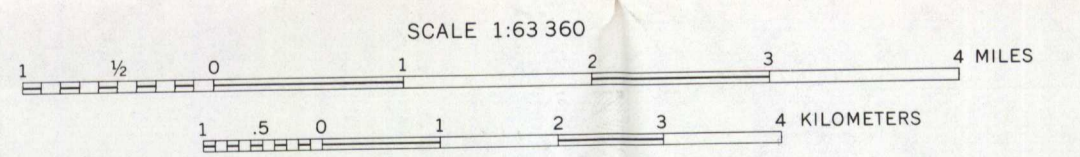
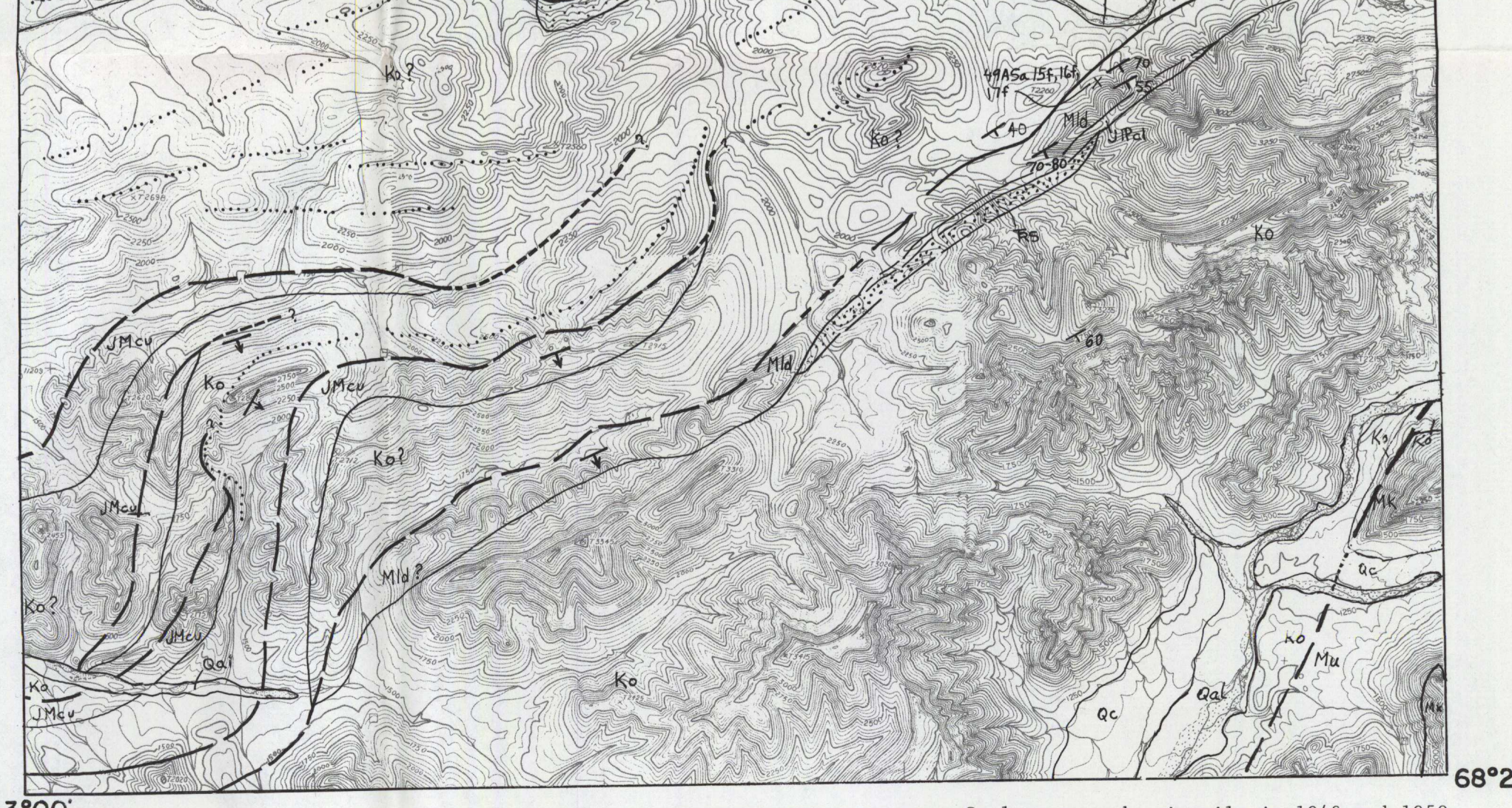
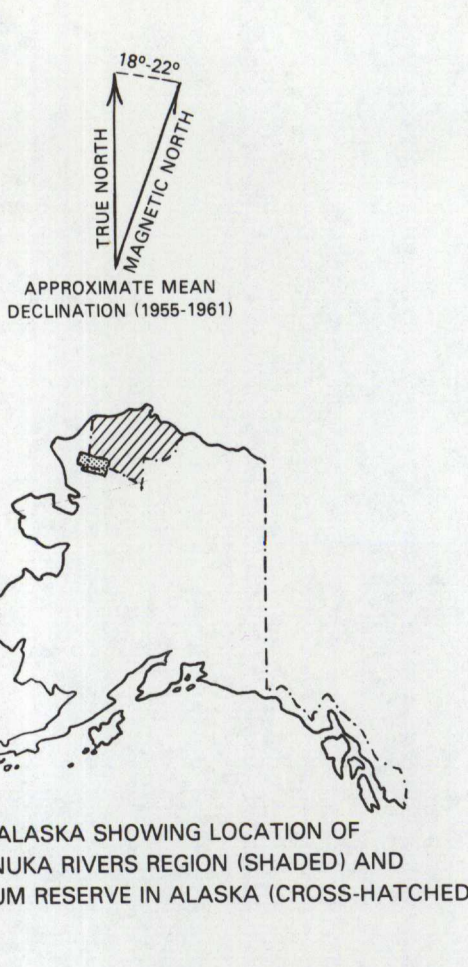


Base from U.S. Geological Survey, De Long Mountains (B-2), (B-3), (C-2), (C-3), (D-2), (D-3), 1:50,000



- LIST OF MAP UNITS
(See accompanying sheet for correlation of map units)
- Qc COLLUVIUM (HOLOCENE)
 - Qal ALLUVIUM (HOLOCENE)
 - Qtg HIGH-LEVEL GRAVEL (HOLOCENE AND PLEISTOCENE)
 - NANUSHUK GROUP
 - Kc Corvix Formation (Upper and Lower Cretaceous)
 - Kk Kukpowruk Formation (Lower Cretaceous)
 - Kt TOROK FORMATION (LOWER CRETACEOUS)
 - Kf FORTRESS MOUNTAIN FORMATION (LOWER CRETACEOUS)
 - Kfw Nucle and Conglomerate member
 - Kfa Sandstone member
 - Ku CRETACEOUS ROCKS
 - Ko OKPIKRUAK FORMATION (LOWER CRETACEOUS)
 - Koa Quartzite member
 - KJa ARCILLACEOUS UNIT (LOWER CRETACEOUS AND JURASSIC)
 - Ju Shublik Formation (Upper and Middle Triassic)
 - Jmcu CHERTY ROCKS (JURASSIC? TO MISSISSIPPIAN)
 - Jpcl Light-colored cherty unit (Jurassic? to Pennsylvanian)
 - Ls LISBURNE GROUP (MISSISSIPPIAN)
 - Mk Kogruk Formation (Upper and Lower Mississippian)
 - Mu Utukok Formation (Lower Mississippian)
 - Mid Dark-colored facies
 - Mz MESOZOIC AND PALEOZOIC ROCKS UNDIVIDED



GEOLOGIC MAP OF THE WESTERN KUKPOWRUK-NUKA RIVERS REGION, NORTHWESTERN ALASKA
By
E. G. Sable, R. M. Chapman, and I. L. Tailleux
1984