

45-25

FIGURE 1
GENERALIZED GEOLOGIC MAP
OF THE
SALT CHUCK MINE AND VICINITY
PRINCE OF WALES ISLAND
SOUTHEASTERN ALASKA

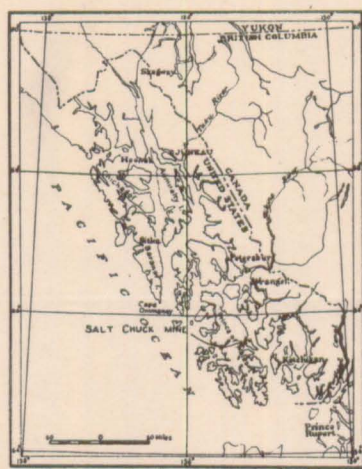
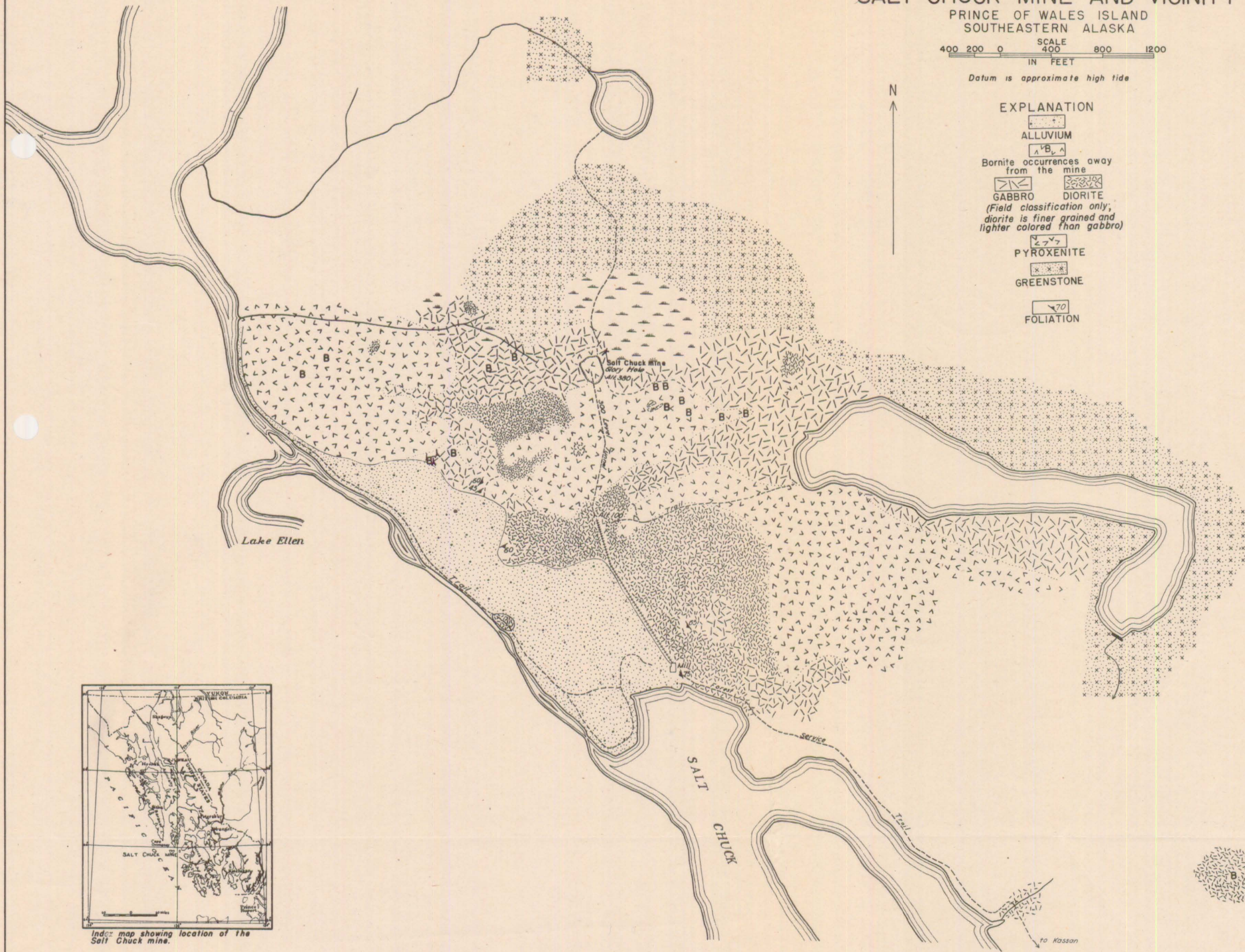
SCALE
400 200 0 400 800 1200
IN FEET

Datum is approximate high tide



EXPLANATION

- ALLUVIUM
- Bornite occurrences away from the mine
- GABBRO
- DIORITE
(Field classification only; diorite is finer grained and lighter colored than gabbro)
- PYROXENITE
- GREENSTONE
- FOLIATION



Index map showing location of the Salt Chuck mine.

Geology by H. R. Gault, Clyde Wahrhaftig, and C. T. Bressler 1942-43