

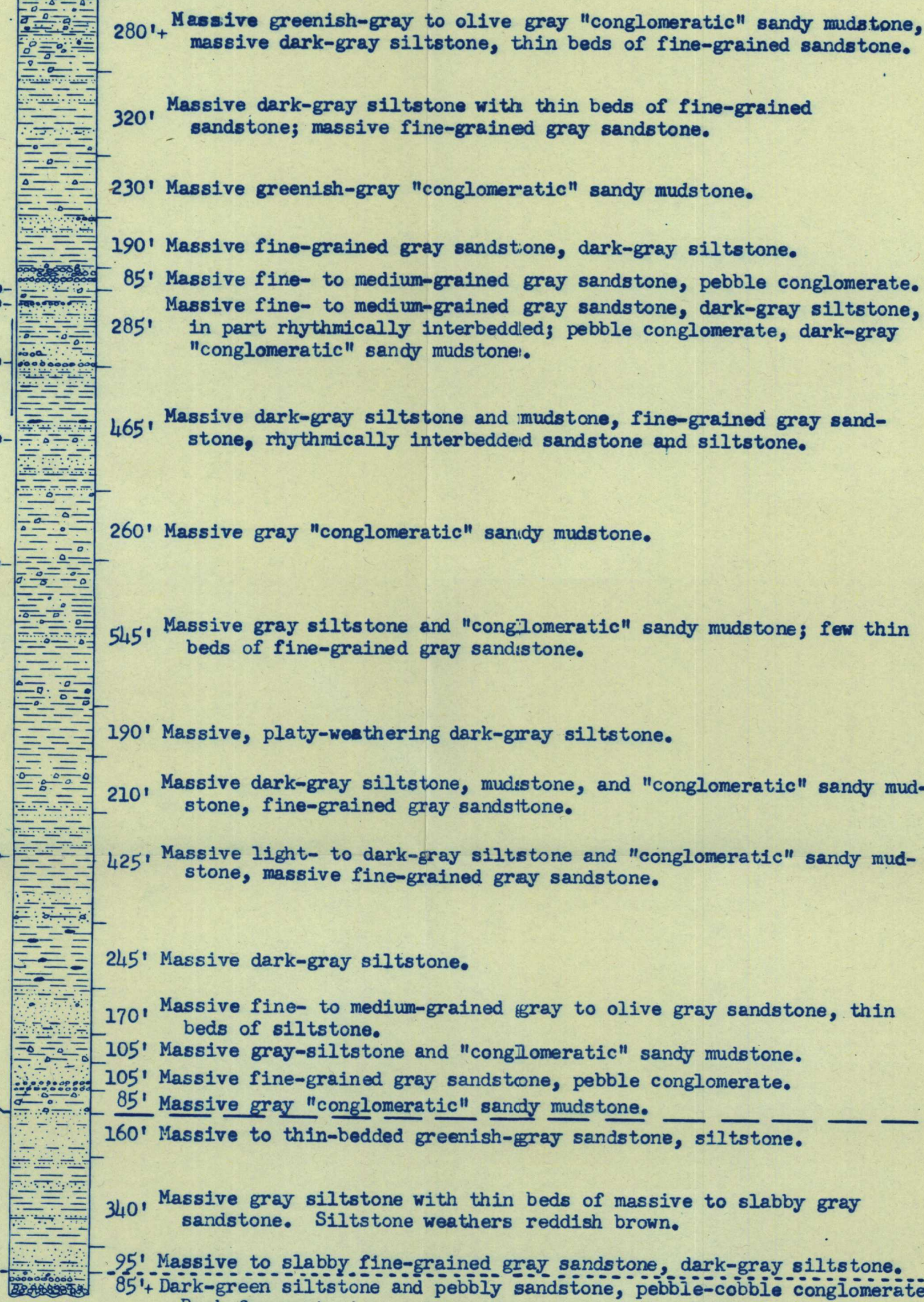
CORRELATED COLUMNAR SECTIONS OF TERTIARY ROCKS IN THE LITUYA DISTRICT, ALASKA

BY
DON J. MILLER
1953

Note: This chart is preliminary and has not been edited or reviewed for conformity with U.S. Geological Survey standards and nomenclature.

MEASURED SECTION
LOWER TOSPY CREEK

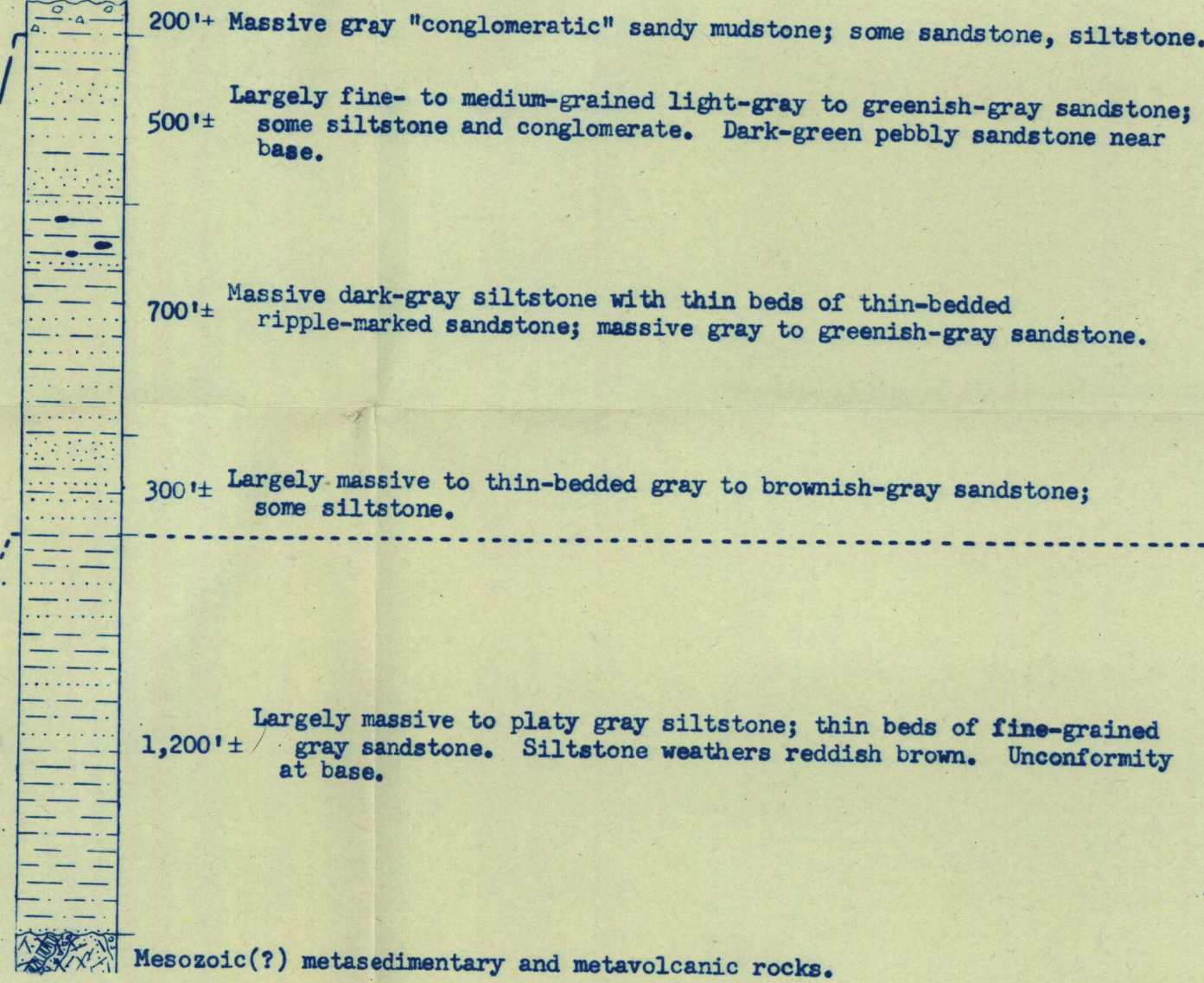
Outer margin of reef near mouth of Topsy Creek; section overlain by about 5,000' of younger beds of similar lithology, but less indurated, between Crillon River and La Perouse Glacier



Axis of anticline on Topsy Creek; section apparently underlain by volcanic rocks on Steelhead Creek to northwest.

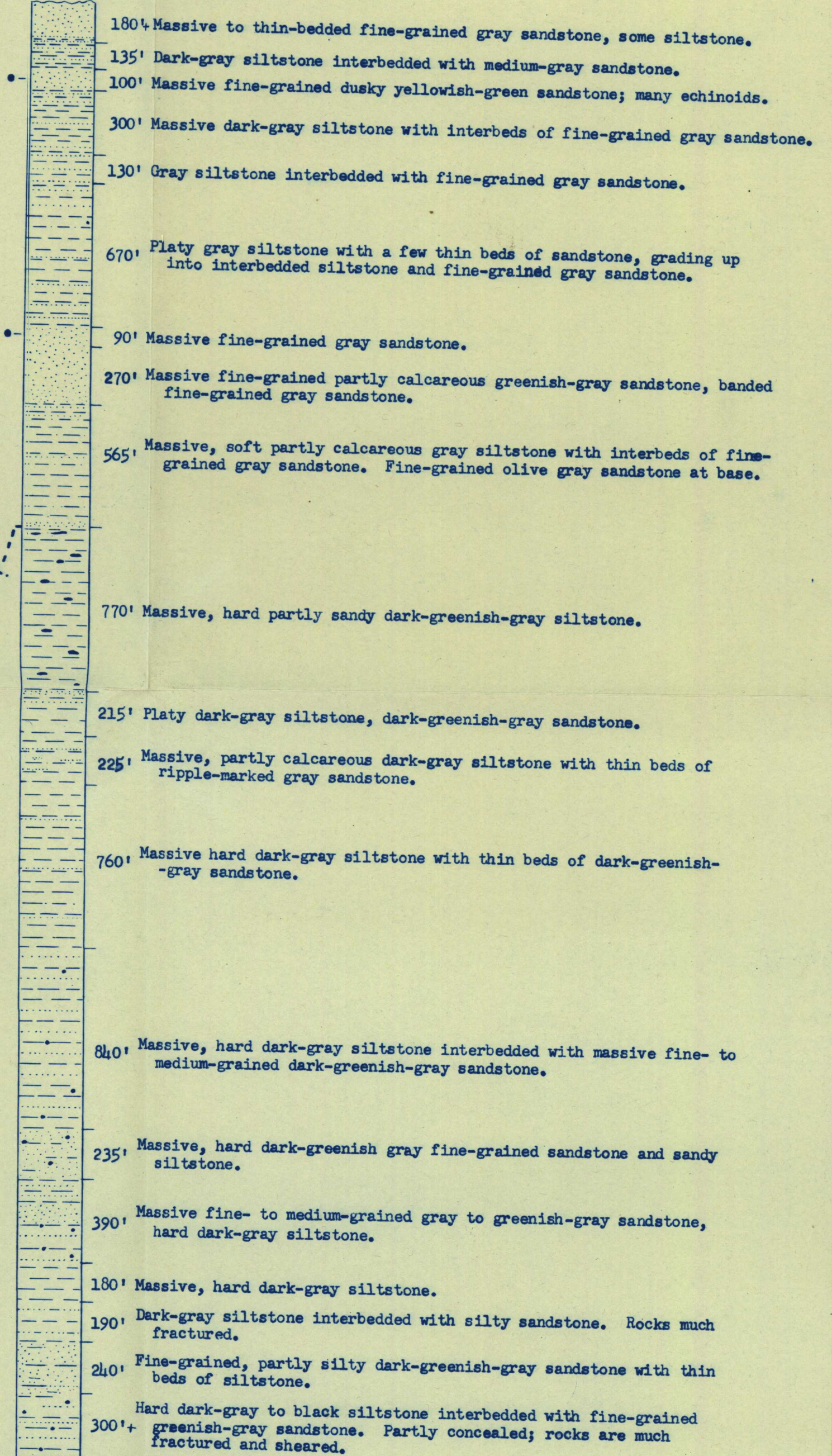
GENERALIZED SECTION
UPPER TOSPY CREEK

Topsy Creek, about 4,000' upstream from axis of syncline; higher beds partly concealed.



MEASURED SECTION
ICY POINT

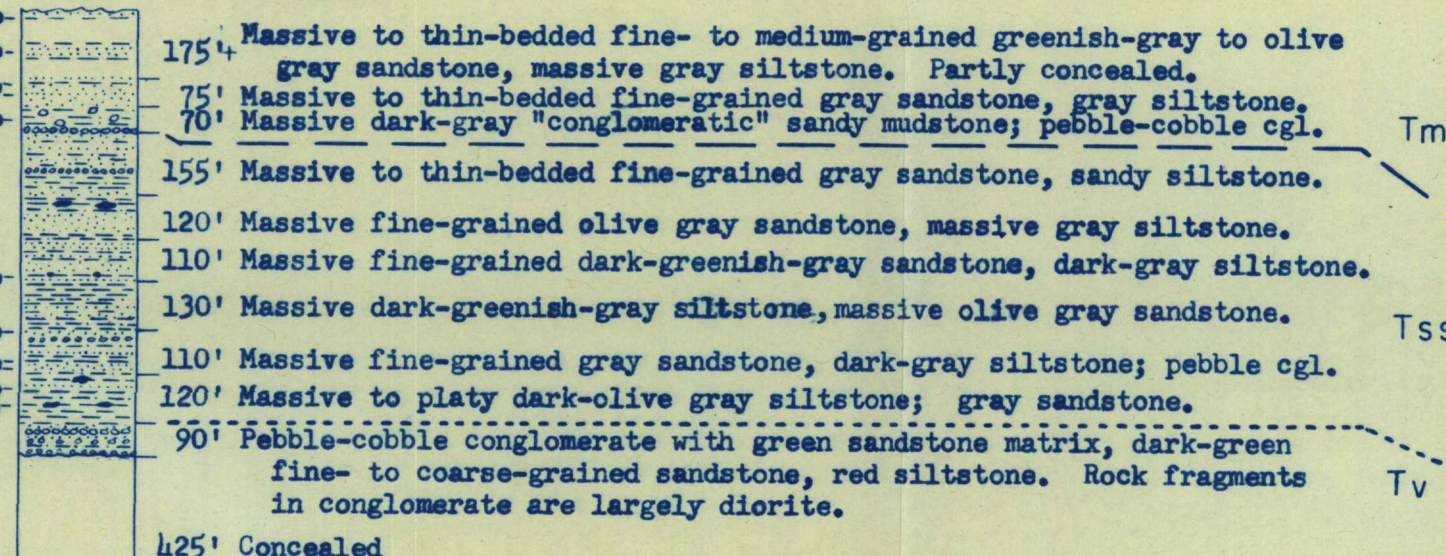
Outer margin of reef west of Icy Point; higher beds not exposed



Reef at mouth of Kaknu Creek; lower beds not exposed

MEASURED SECTION
CENOTAPH ISLAND

Southeast shore of island; higher beds not exposed.

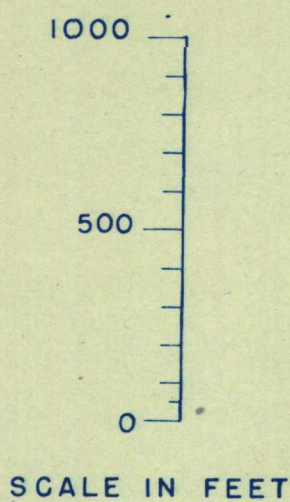


130' Partly concealed; outcrops are volcanic breccia

245' Massive volcanic breccia with green matrix.

355'± Massive volcanic breccia; thin beds of tuffaceous sandstone at top and near base.

East cape of island; lower beds not exposed



- EXPLANATION FOR COLUMNAR SECTIONS
- Volcanic breccia
 - "Conglomeratic" sandy mudstone
 - Conglomerate
 - Massive sandstone
 - Bedded sandstone
 - Sandy siltstone or mudstone
 - Siltstone
 - Calcareous concretions
 - Location of fossil collection
- See geologic map for explanation of letter symbols representing stratigraphic units.