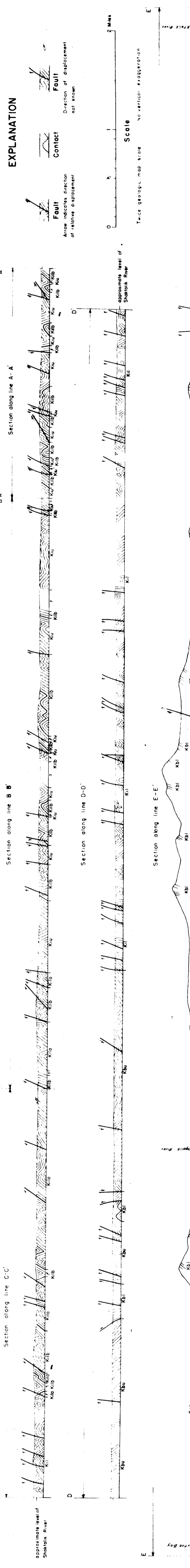


# PRELIMINARY GEOLOGIC MAP AND STRUCTURE SECTIONS OF THE SHAKTOOLIK RIVER AREA, ALASKA

by  
William W. Patton, Jr. and Robert S. Bickel  
1955

Scale  
0 1 2 3 4 5 Miles

Map is preliminary and subject to change without notice. It is for general information only. It is not to be used for engineering or construction purposes.



## EXPLANATION

**BORDER FACIES**  
Map boundary is arbitrary and subject to change without notice. It is for general information only. It is not to be used for engineering or construction purposes.

**INTERIOR FACIES**  
Map boundary is arbitrary and subject to change without notice. It is for general information only. It is not to be used for engineering or construction purposes.

**CRETACEOUS QUATERNARY**  
Map boundary is arbitrary and subject to change without notice. It is for general information only. It is not to be used for engineering or construction purposes.

**CRETACEOUS**  
Map boundary is arbitrary and subject to change without notice. It is for general information only. It is not to be used for engineering or construction purposes.

**Strike and dip of beds**  
Strike-slip fault  
Normal fault  
Fault

## INDEX MAP

Map is preliminary and subject to change without notice. It is for general information only. It is not to be used for engineering or construction purposes.

**EXPLANATION**

Map boundary is arbitrary and subject to change without notice. It is for general information only. It is not to be used for engineering or construction purposes.

**STRUCTURE SECTIONS**

Map boundary is arbitrary and subject to change without notice. It is for general information only. It is not to be used for engineering or construction purposes.

**EXPLANATION**

Map boundary is arbitrary and subject to change without notice. It is for general information only. It is not to be used for engineering or construction purposes.

**STRUCTURE SECTIONS**

Map boundary is arbitrary and subject to change without notice. It is for general information only. It is not to be used for engineering or construction purposes.