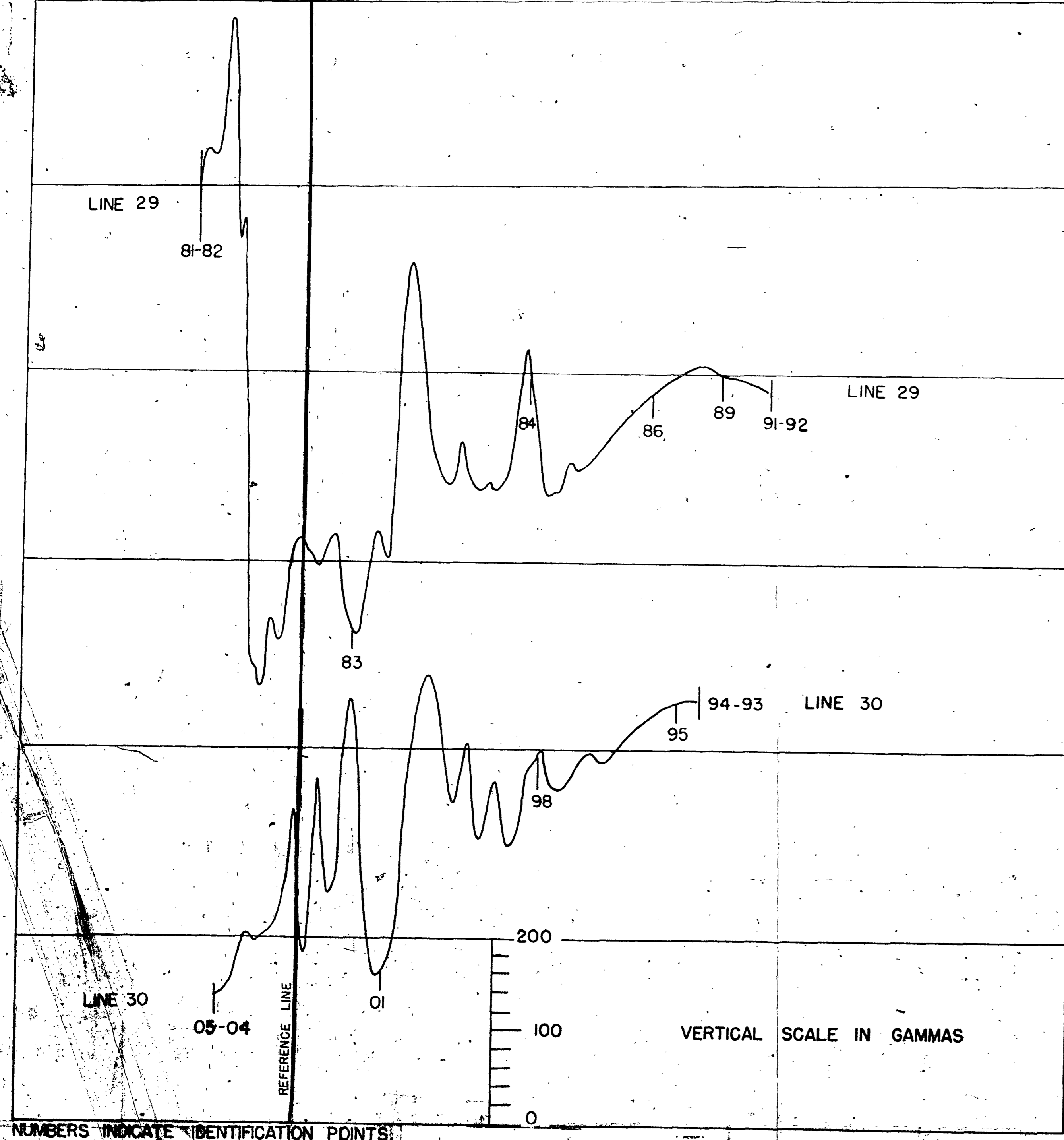
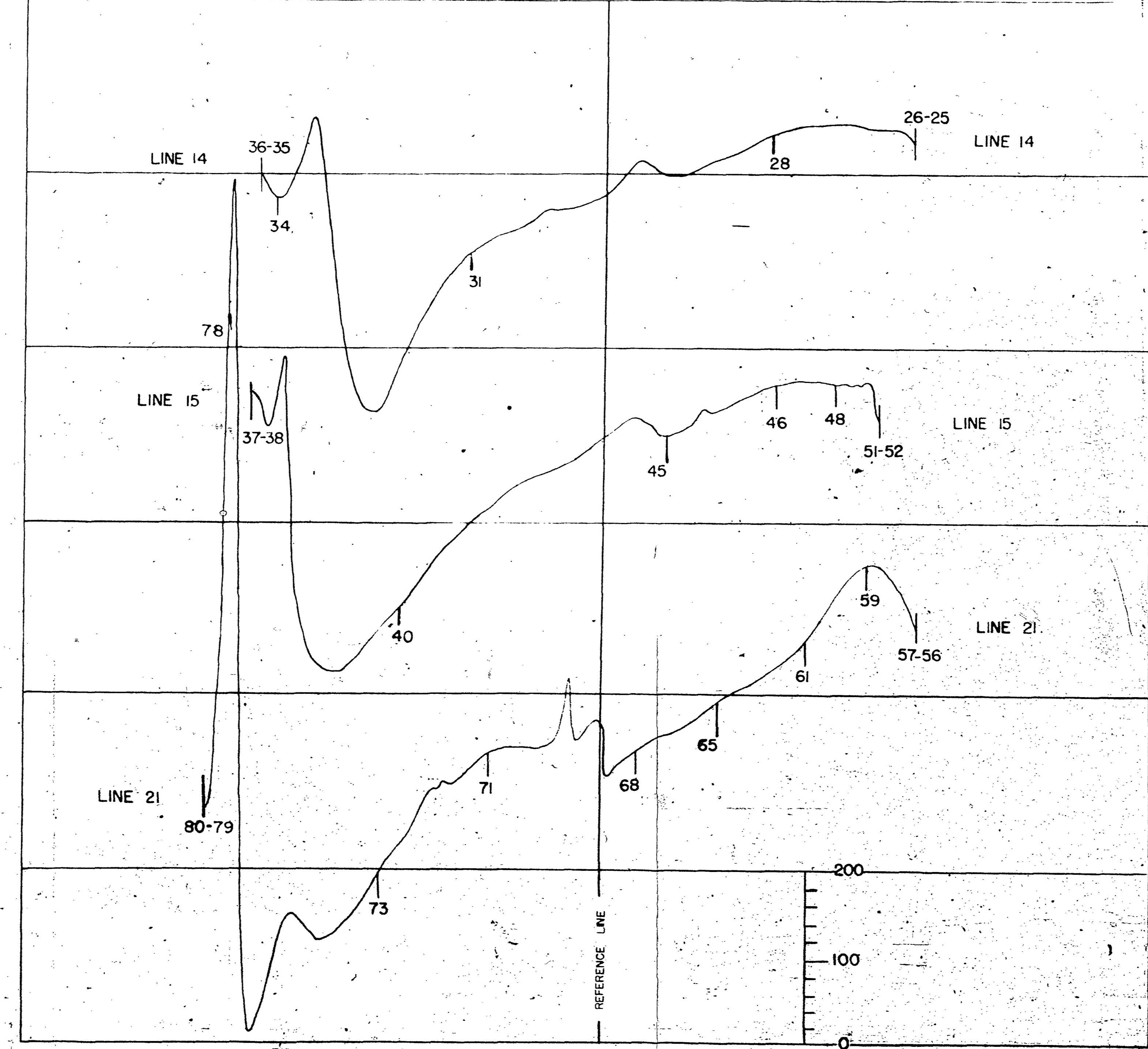


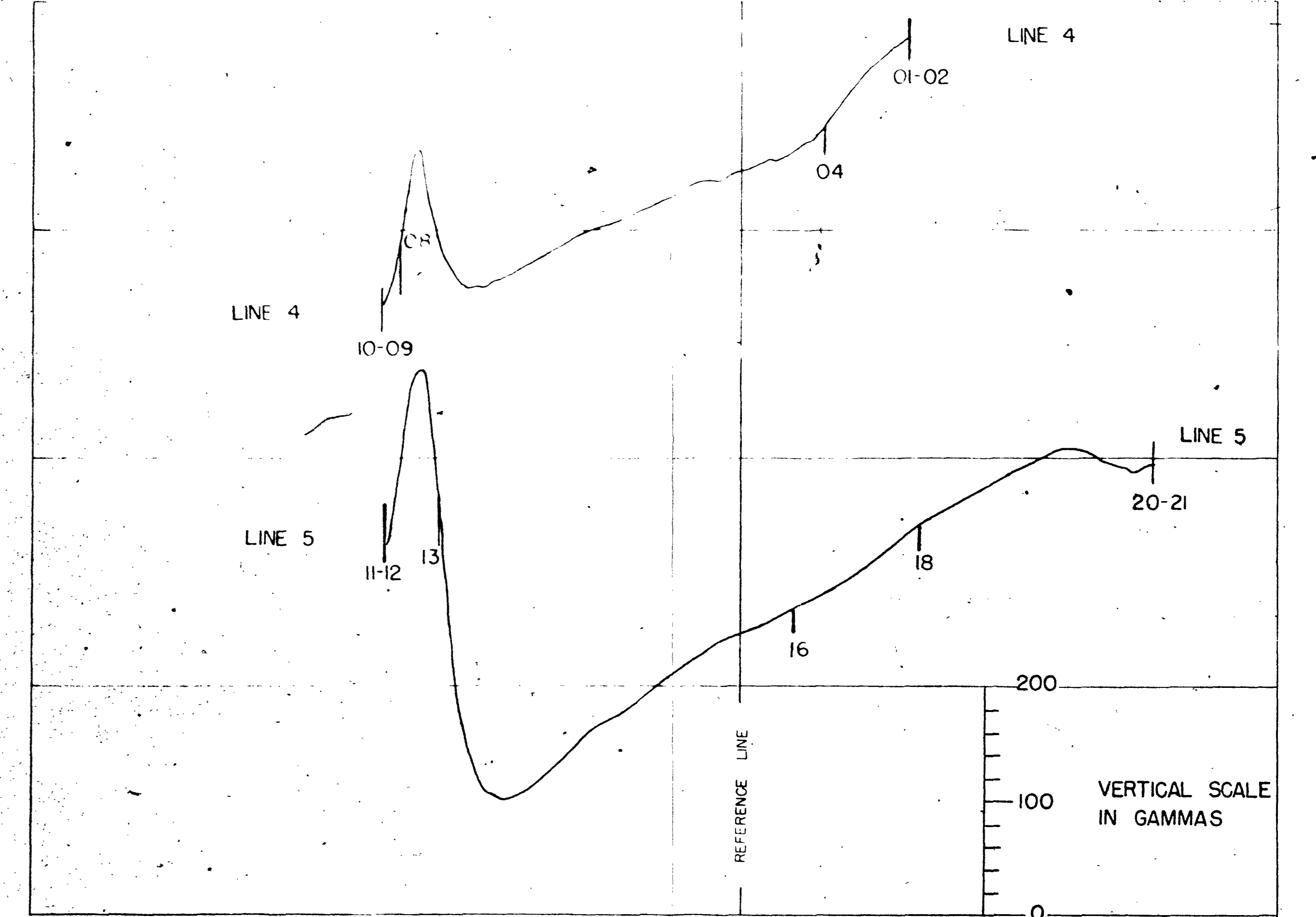
DEPARTMENT OF THE INTERIOR
UNITED STATES GEOLOGICAL SURVEY



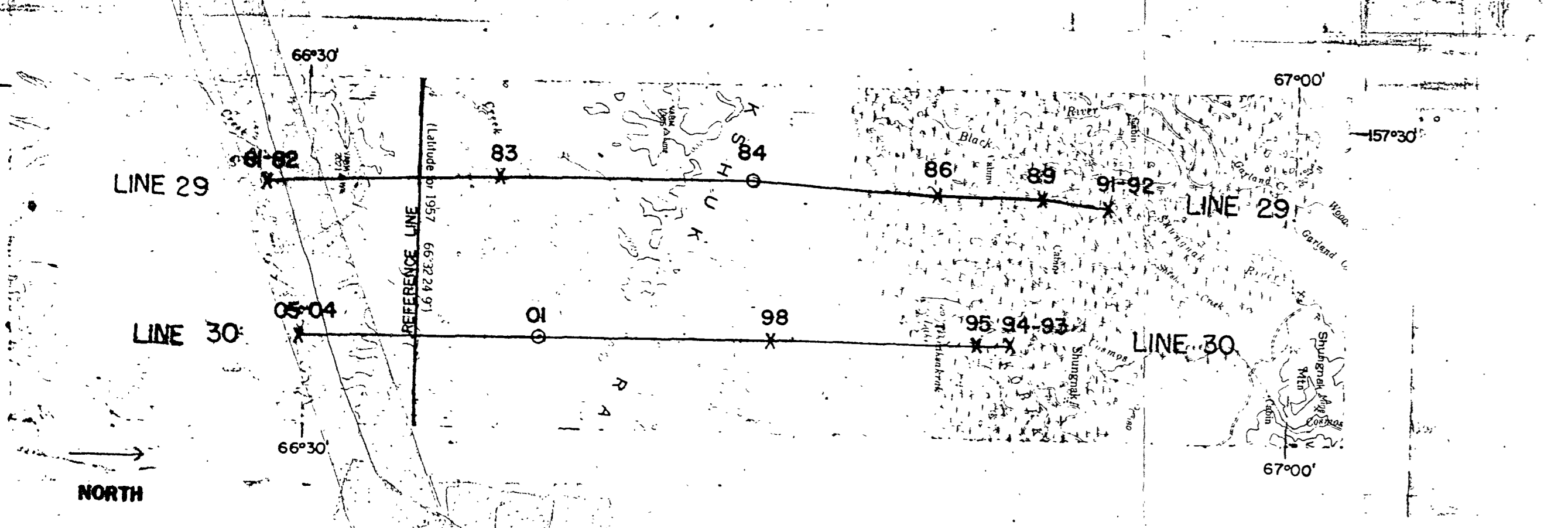
NUMBERS INDICATE IDENTIFICATION POINTS



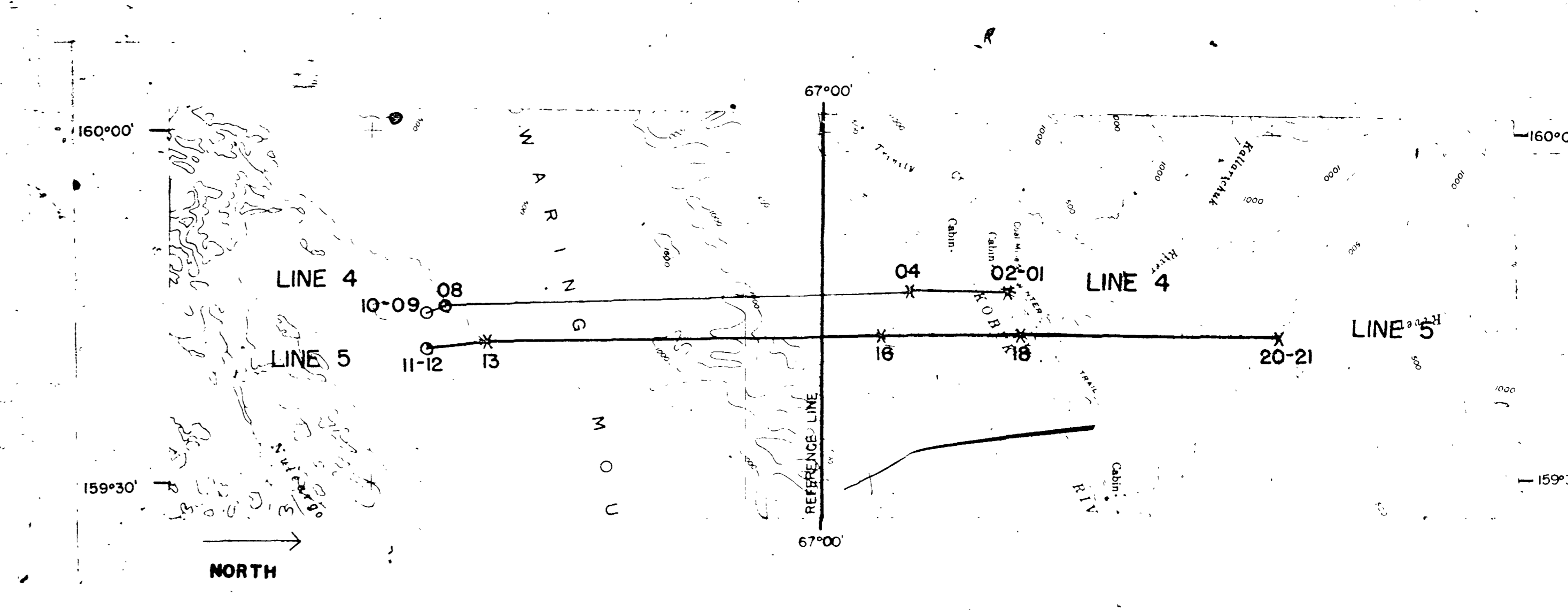
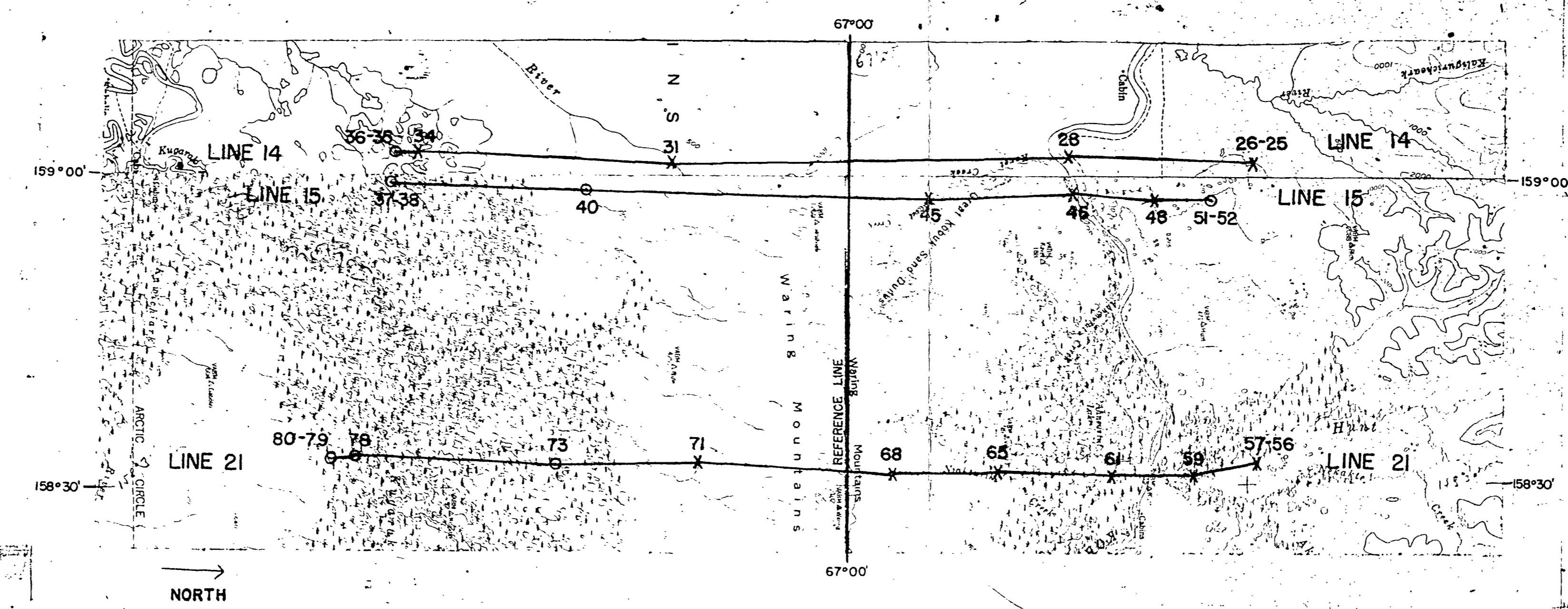
VERTICAL SCALE IN GAMMAS



PROFILES NOT ADJUSTED TO COMMON DATUM



BASE MAP BY TOPOGRAPHIC DIVISION
U.S. GEOLOGICAL SURVEY

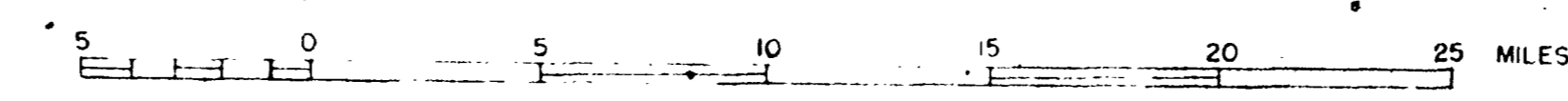


SURVEY BY GE ANDREASEN, AT A BAROMETRIC
ELEVATION OF 2500 FEET, 1958

TOTAL INTENSITY AEROMAGNETIC PROFILES OF THE KOBUK RIVER AREA, ALASKA

FLIGHTS: 4, 5, 14, 15, 21, 29, 30

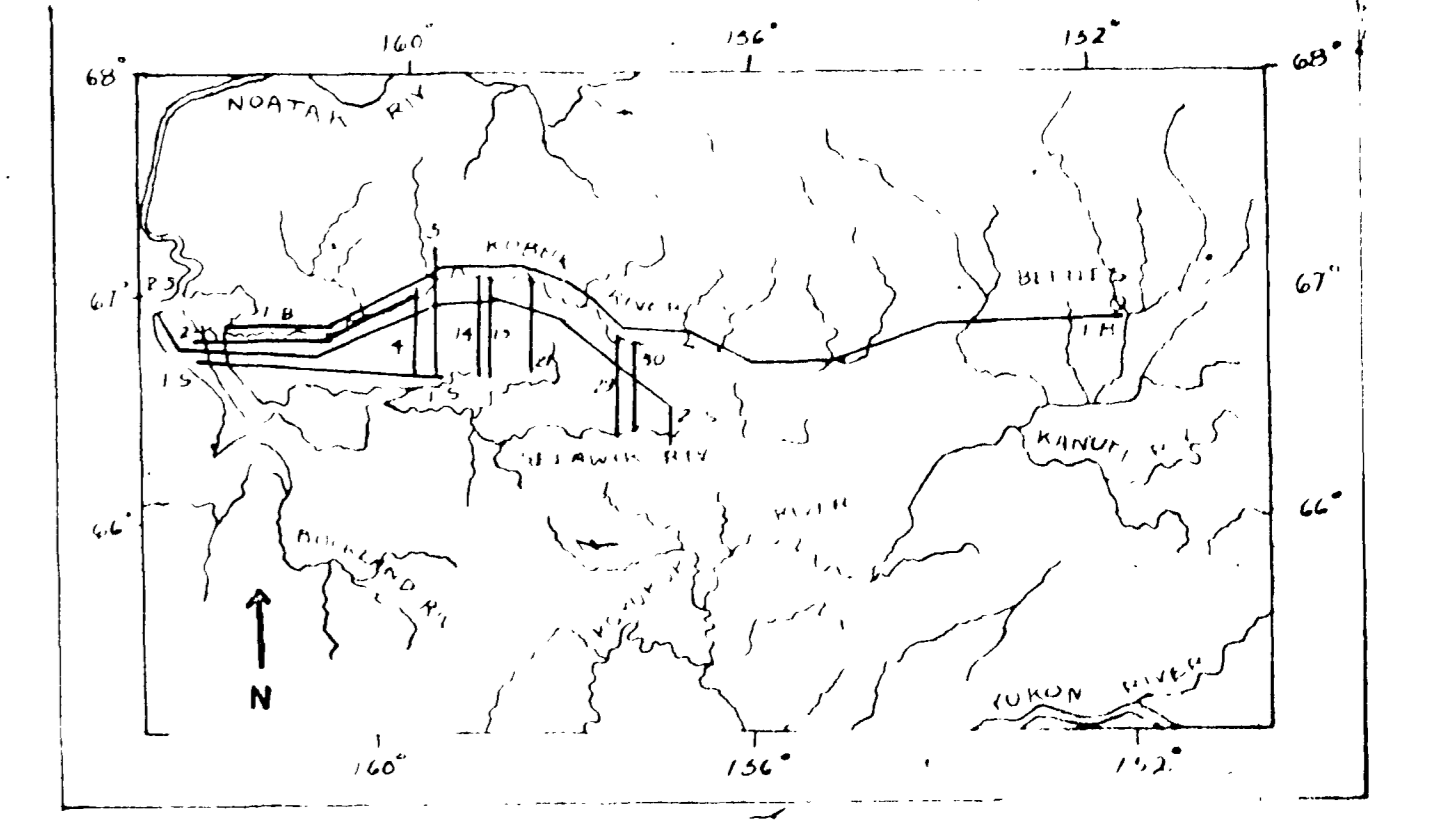
SHEET 3 OF 5
SCALE 1:250,000



1959

U. S. GEOLOGICAL SURVEY
Returned to open files
APRIL 30, 1960

This map is preliminary
and has not been edited
or revised for conformity
to Geological Survey
standards and nomenclature.



INDEX MAP SHOWING FLIGHT TRAVERSES