

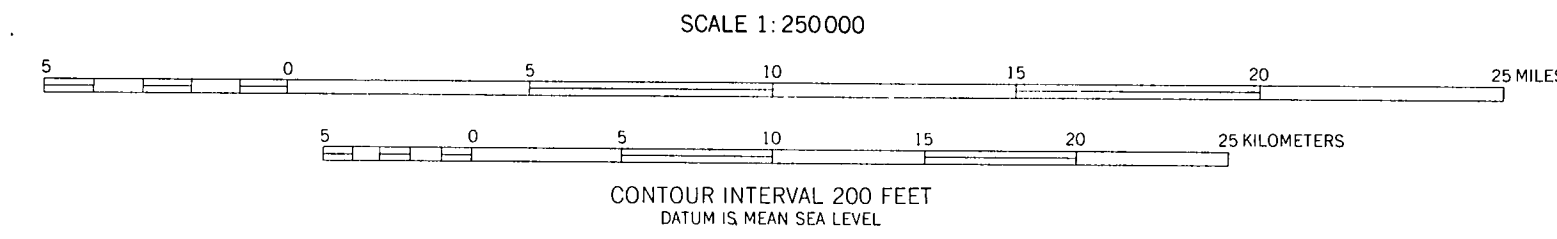


Geology by:  
 P. S. Smith, J. B. Mertie Jr., 1924  
 W. W. Patton Jr., M. D. Mangus, W. P. Brosge 1951  
 J. T. Dutro Jr., M. D. Mangus 1952  
 W. W. Patton Jr., I. L. Tailleux 1953  
 W. P. Brosge, H. N. Reiser, C. L. Whittington 1958  
 W. P. Brosge, H. N. Reiser, 1959, 1960, 1962  
 W. P. Brosge, H. N. Reiser, M. A. Lanphere 1965  
 W. P. Brosge, H. N. Reiser, 1967

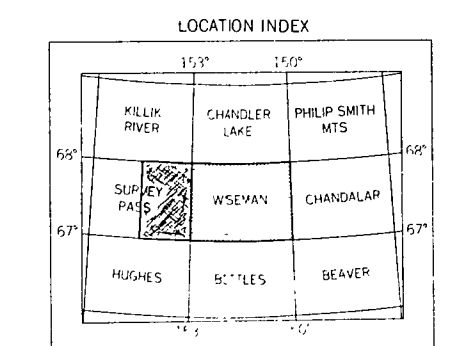
Quaternary geology and geology of area south of Arrigetch Peaks largely from interpretation of aerial photographs.

SURVEY PASS.

PRELIMINARY BEDROCK GEOLOGIC MAP,  
 WISEMAN AND EASTERN SURVEY PASS QUADRANGLES, ALASKA  
 by W. P. Brosge and H. N. Reiser 1971

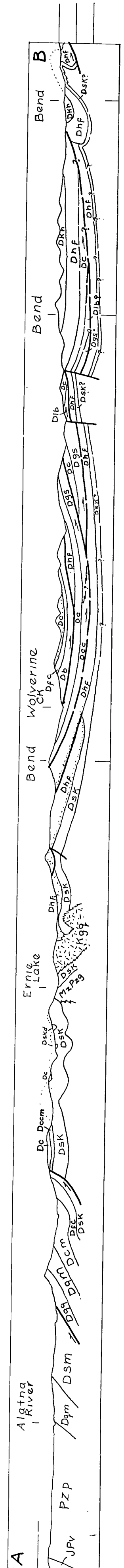


1959 MAGNETIC DECLINATION AT SOUTH EDGE OF SHEET VARIES FROM 28°30' TO 28°30' EAST



WISEMAN

This map is preliminary and has not been reviewed for conformity with U.S. Geological Survey standards and nomenclature.



2000  
3000  
4000  
5000  
feet

Property of  
 U.S. GEOLOGICAL SURVEY LIBRARY