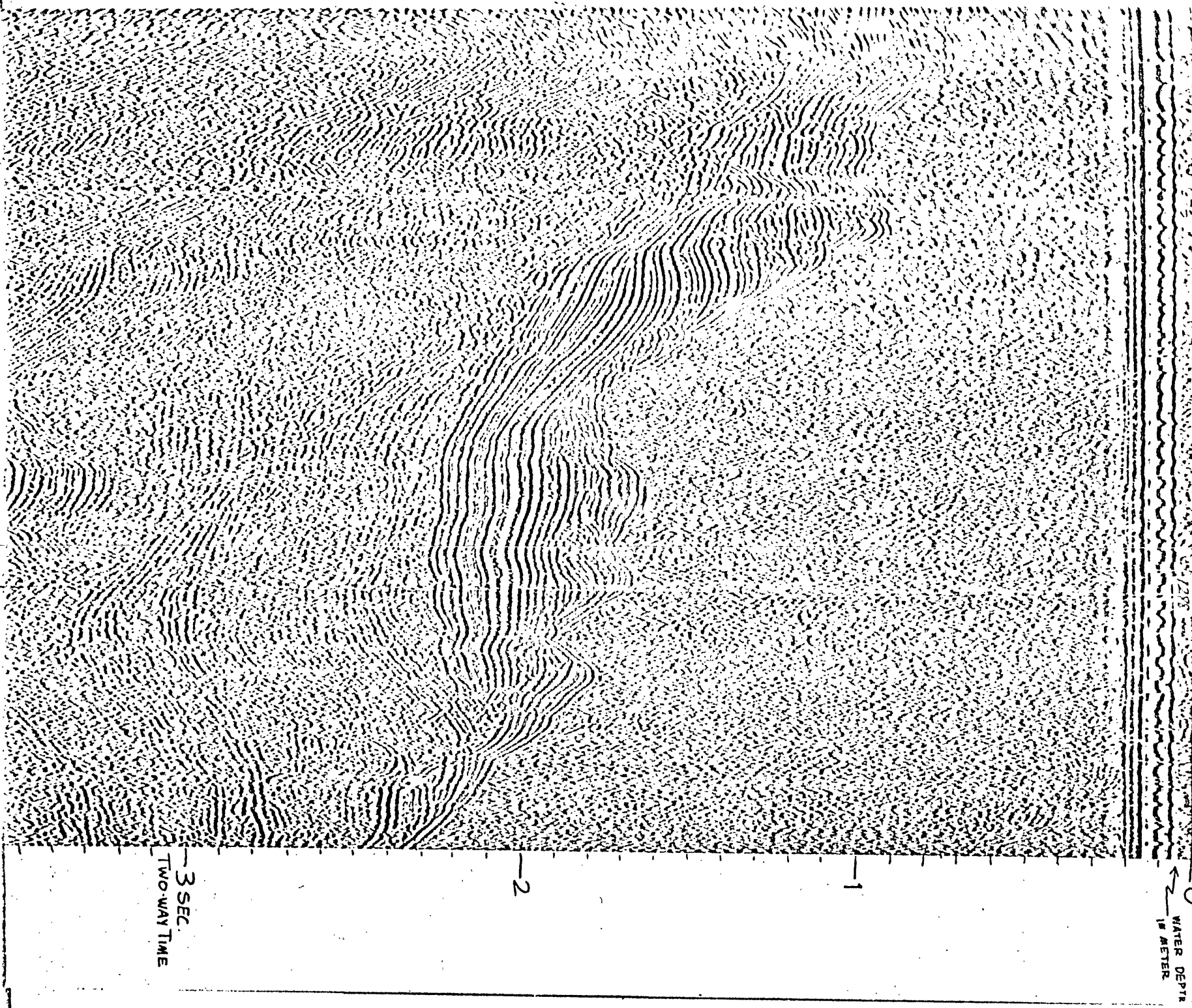


END LINE 330-331



JD 240
2000
2007, 8A
330-331
T-021

1930
160 KJ
300 CI
4/4/44
60/20

3 SEC.
TWO-WAY TIME

0
WATER DEPTH
IN METERS

LEG
330-331

DATE & TIME (ALASKA DAYLIGHT TIME)

AUG. 28 (JD. 240) 1911-2013

DIPSE (DEGREES FROM TRUE NORTH)

200°

SPEED (KNOTS)

8 1/2

SWEEP RATE (SECONDS)

4 sec.

FINE RATE (SECONDS)

4 sec.

POWER (KILOWATTS/CM² INCHES OF AIR)

160/300

FILTER SETTINGS (HIGH & LOW LIMITS IN HERTZ)

60/20

Profile released without editorial and technical review for conformity to Geological Survey standards.

