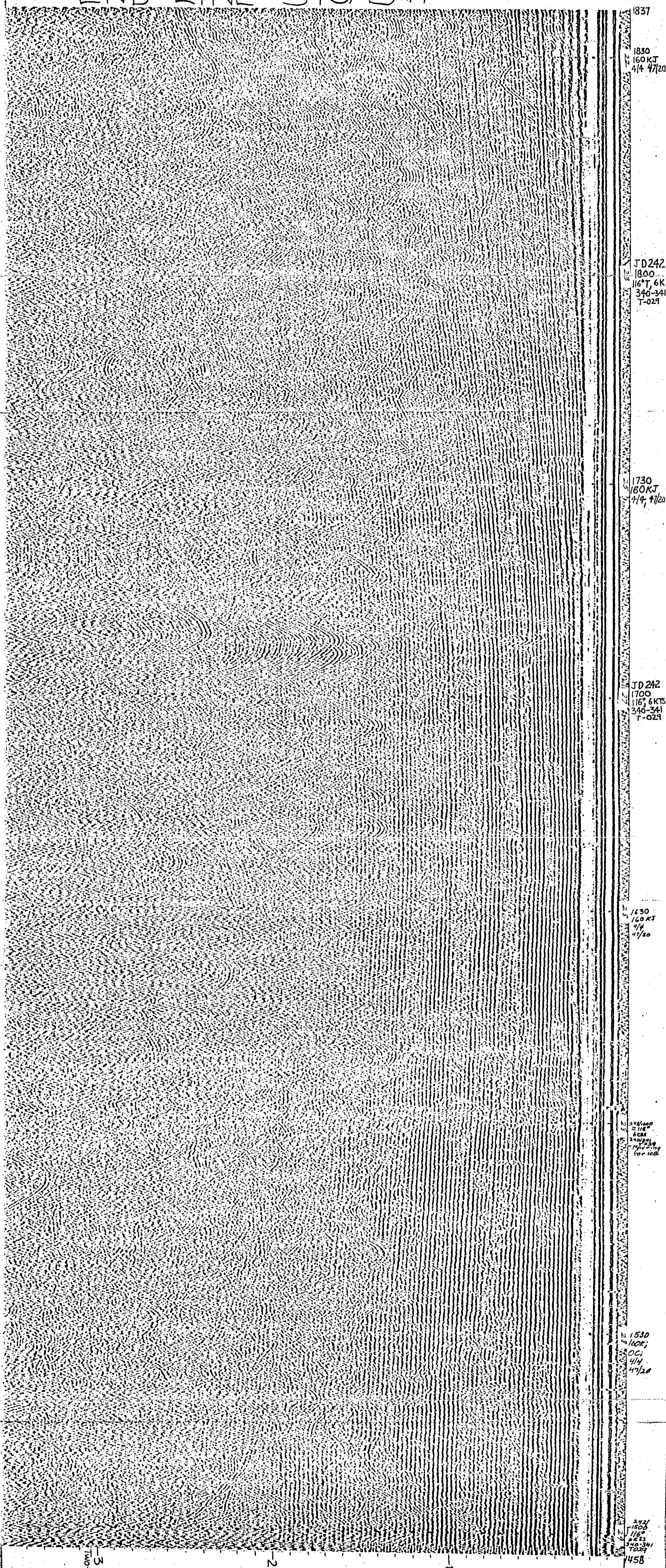


END LINE 340A-341



1837
1830
160KJ
4/4 47/20

JD242
1800
116° T, 6K
340-341
T-029

1730
180KJ
4/4 47/20

JD242
1700
116° 6KTS
340-341
T-029

1630
160KJ
4/4 47/20

1530
160KJ
4/4 47/20

1430
160KJ
4/4 47/20

1458
160KJ
4/4 47/20

3 SEC.
TWO-WAY TIME

2

1

0

1837
1830
160KJ
4/4 47/20

JD242
1800
116° T, 6K
340-341
T-029

1730
180KJ
4/4 47/20

JD242
1700
116° 6KTS
340-341
T-029

1630
160KJ
4/4 47/20

1530
160KJ
4/4 47/20

1430
160KJ
4/4 47/20

1458
160KJ
4/4 47/20

1837
1830
160KJ
4/4 47/20

JD242
1800
116° T, 6K
340-341
T-029

1730
180KJ
4/4 47/20

JD242
1700
116° 6KTS
340-341
T-029

1630
160KJ
4/4 47/20

1530
160KJ
4/4 47/20

1430
160KJ
4/4 47/20

1458
160KJ
4/4 47/20

340A-341

DATE & TIME (ALASKA STANDARD TIME)

1458-1837

116°

Some measuring for ice between 1945 & 1945

SPREAD (FOOT)

6 hr

SCALE BAR (SECONDS)

4 sec

TIME BAR (SECONDS)

4 sec

POINT (ELEVATION/CHIEF ENGINEER OF AID)

149/20

FLIGHT SETTINGS (RANGE & LOG LENGTHS IN FEET)

47/20

Profile released without editorial and technical review for conformity to Geological Survey standards.

U.S. GEOLOGICAL SURVEY
LIBRARY
JAN 23 1974
DALLAS

(200)
R 290
no. 1944