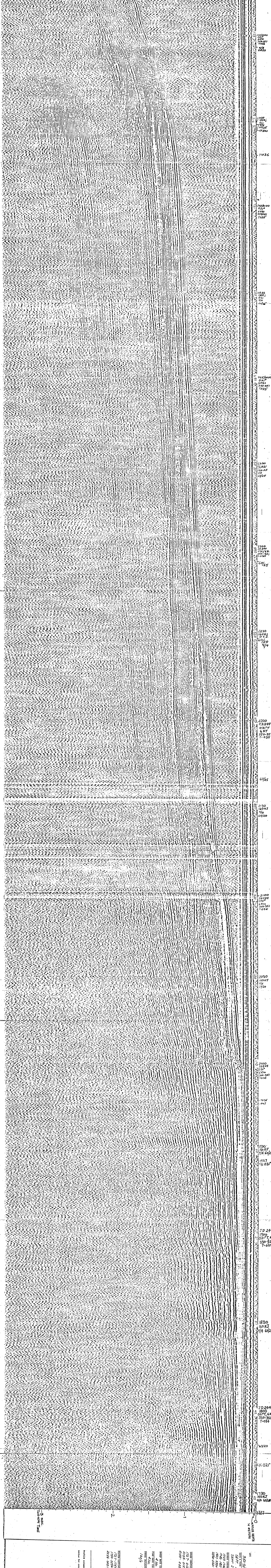


End Line 350-351



2450/000
 021P
 60KJ
 4/4
 7035

 2450/000
 021P
 60KJ
 4/4
 7035

 2330
 60KJ
 4/4
 7035

 2300
 60KJ
 4/4
 7035

 2230
 60KJ
 4/4
 7035

 2200
 60KJ
 4/4
 7035

 2130
 60KJ
 4/4
 7035

 2100
 60KJ
 4/4
 7035

 2050
 60KJ
 4/4
 7035

 2000
 60KJ
 4/4
 7035

 1950
 60KJ
 4/4
 7035

 1930
 60KJ
 4/4
 7035

 1927
 60KJ
 4/4
 7035

 JD 244
 1800
 60KJ
 4/4
 7035

 1830
 60KJ
 4/4
 7035

 JD 244
 1800
 60KJ
 4/4
 7035

 1830
 60KJ
 4/4
 7035

 1800
 60KJ
 4/4
 7035

 1730
 60KJ
 4/4
 7035

 1727
 60KJ
 4/4
 7035

3 SEC. - 30 MIN. TIME
 2
 1
 0
 H. EITNER
 350-351
 DATE TIME (LOCAL STANDARD TIME)
 SEPT 1 (10 24) 1727-2800
 SEPT 2 (10 28) 0200-0241
 OTHER (GIVE TIME SOURCE)
 1727 1725 0214
 1730 1820 0214
 1827 1820 0214
 2330-0221 0214
 SPEED (METERS)
 4.00
 TIME (SECONDS)
 47.0
 FROM (GIVE DATE AND TIME)
 10/9/68
 FIELD NUMBER (SEE TIME LISTING IN REPORT)
 1727-1725 0214
 1730-1820 0214
 2330-0221 0214
 Profiles retained without editorial and technical review for conformity to Geological Survey standards.
 U.S. GEOLOGICAL SURVEY
 DENVER
 JAN 23 1974

(200)
R 290
no. 1944